



WSLH Proficiency Testing
WISCONSIN STATE LABORATORY OF HYGIENE
UNIVERSITY OF WISCONSIN-MADISON

PRODUCT CATALOG 2026

Approved by CMS and accepted by
CAP, COLA, and The Joint Commission



A
LEGACY
OF
EXCELLENCE
AND
SERVICE

1966 - Present

Under the leadership of Dr. Stanley L. Inhorn, the Wisconsin State Lab of Hygiene creates a proficiency testing program in 1966 to serve medical laboratories.

After The Clinical Laboratory Improvement Amendments (CLIA), WSLH PT expands drastically, serving thousands of laboratories across the United States.

"Service and excellence, it's in our DNA. When you partner with us, you are choosing a PT provider who is going to give you the support you need to achieve your quality assurance goals."

Mike Argall, MT (ASCP), Director of WSLH PT

TABLE OF CONTENTS

4	Why WSLH PT?
6	Score Transmission Information
8	Product Information
9	Chemistry - Blood Gas/Oximetry
11	Chemistry - General
20	Coagulation
22	Hematology
27	Immunohematology - Blood Bank
28	Immunology
33	Microbiology
36	Microbiology - Bacteriology
45	Microbiology - Mycobacteriology
46	Microbiology - Mycology
47	Microbiology - Parasitology
48	Microbiology - Virology
52	Urinalysis/Microscopy/Misc.
56	Andrology
58	Online Training and Competency
61	Assayed Sample Sets
62	Additional Products
63	Shipping Schedule
66	Index



YOUR LAB, OUR MISSION

Reliable, affordable and easy-to-use proficiency testing with rapid access to results.

WSLH PT, backed by a national public health laboratory and a Big Ten university.

Approved by CMS and accepted by CAP, COLA, and The Joint Commission.

OUR HISTORY

In 1966, WSLH PT was developed by the Wisconsin State Lab of Hygiene (WSLH) to create proficiency testing programs that improved laboratory quality. Today, as part of this national public health laboratory, we are proud to provide you with the highest quality service to meet your needs.

Based in Madison, Wisconsin, we are affiliated with the state's flagship higher education institution, the University of Wisconsin-Madison. Our unique affiliations provide you with the technical expertise and educational resources to set you up for PT success.

OUR COMMUNITY

Each of our clinical proficiency testing programs has a dedicated Medical Technologist with at least 5 years of laboratory bench experience, extensive instrument knowledge, and exceptional customer service skills to meet your laboratory's needs. WSLH PT is approved by CMS and accepted by CAP, COLA, and The Joint Commission.



WHY WSLH PT?

Reliable, affordable, & easy-to-use proficiency testing products

I placed a small order; however, you treated me with the professionalism and the attention as if I had place a large order.

-Jason C.

Working with WSLH was an excellent experience.

-Cathy S.

Great customer service!

-Warren B.



HOW CAN WE BEST SERVE YOU?

We want to know! Contact us at (800) 462-5261 or ptservice@slh.wisc.edu

Enrollment made easy

Request a free, no-obligation quote anytime at wslhpt.org

NEW CUSTOMERS

Submit an [Order Form](#)

To order, submit a form online at wslhpt.org. Once you have submitted your form, customer service will assign your lab a WSLH PT ID number and email you an enrollment confirmation. You can expect to receive a confirmation letter and a customized shipping schedule via email within 24-48 hours of order receipt. Experienced medical technologists are available Monday-Friday, 8:00am-4:30pm (CST) to assist you at (800) 462-5261.

CURRENT CUSTOMERS

2026 Enrollment

Current customers will receive a new catalog and a re-enrollment packet via email. This packet will contain a list of programs that the lab was enrolled in the previous year. Review and edit selections where necessary and return forms for processing. You can expect to receive a confirmation letter and a customized shipping schedule via email once re-enrollment has been processed.

Changes to Active Enrollment or Account Information

To update contact or agency information, or add or drop PT enrollment at any time, please complete a [Customer Change Form](#) at wslhpt.org. Account changes require written documentation. You will receive an updated enrollment confirmation reflecting the requested changes.


SHIPPING INFORMATION

WSLH PT provides a customized shipping schedule with your enrollment confirmation. Customers with a valid email address under "Shipping Information" on the Enrollment Form will receive an email notification for each shipment. Most packages will arrive within 2 days of the scheduled ship date. Overnight shipments are designated on the shipping calendar. Your facility must make arrangements to accept delivery and have the package routed immediately to the appropriate location for proper handling and storage.

If you do not receive samples within 2 days of the scheduled ship date, please contact WSLH PT at (800) 462-5261. Please notify WSLH PT in advance of any address changes. Import permits or customs forms must be provided by international customers at least 30 calendar days prior to the first scheduled shipment.

CANCELLATION OF PRODUCTS

To cancel products, complete a [Customer Change Form](#) online at wslhpt.org. All cancellations must be submitted in writing at least 30 days prior to a scheduled shipment date. A credit will be applied to your account, if appropriate. The annual processing fee is non-refundable. Refund requests will be handled on a case-by-case basis by the accounts receivable department.



To assure participation in all shipments, enrollment and order forms must be received by December 1st. Contact us for sample availability after December 1st.

SCORE TRANSMISSION & ACCREDITATION

REPORTING THE SAME CLIA REGULATED ANALYTE IN MULTIPLE MODULES OR WITH MULTIPLE PT PROVIDERS

Under CLIA section 493.801:

(a) **Standard; Enrollment.** *The laboratory must–*

(1) Notify HHS of the approved program or programs in which it chooses to participate to meet proficiency testing requirements of this subpart.

(2) (i) Designate the program(s) to be used for each specialty, subspecialty, and analyte or test to determine compliance with this subpart if the laboratory participates in more than one proficiency testing program approved by CMS

(4) Authorize the proficiency testing program to release to HHS all data required to–

(i) Determine the laboratory's compliance with this subpart; and

(ii) Make PT results available to the public as required in section 353(f)(3)(F) of the Public Health Service Act.

(b) (7) PT is required for only the test system, assay, or examination used as the primary method for patient testing during the PT event.

WSLH PT offers reporting for the same CLIA regulated analyte in multiple modules. To assist labs with meeting the CLIA requirements above, WSLH PT provides the list of CLIA regulated analytes that are available to report in multiple modules as well as the order in which the scores are sent to CMS and applicable agencies in the chart below.

For example, looking at the chart below, if you are reporting Glucose with module 1310 and 1050, the Glucose score from 1310 will be sent to agencies. If you are reporting BUN with module 1050 and 1345, the BUN score from module 1050 will be sent to agencies.

Note: It is important to notify your proficiency testing (PT) provider if you are reporting the same CLIA regulated analyte with multiple PT providers so they know how to properly handle your agency score transmission. WSLH PT follows the table below to send scores to your applicable agencies. Please notify WSLH PT if your lab does not want scores sent and/or prefer scores for an analyte to be sent from a different module to your accreditation agency.

	CLIA Regulated Analytes that are Available to Report in Multiple Modules	Module Order for Score Transmission *Immunology section lists Score Transmission by Analyte Order
Chemistry	<ul style="list-style-type: none"> • Chloride • CO₂, total • Creatinine • Glucose • Potassium • Sodium • Urea Nitrogen (BUN) 	<ol style="list-style-type: none"> 1. Modules 1310, 1314, 1318, 1322 – Chemistry/Endocrinology/Therapeutic Drugs (CET) 2. Module 1050 – Blood Gases/ Electrolytes / Metabolites (BG) 3. Module 1345 – i-STAT Chemistries PLUS (BGB)
	<ul style="list-style-type: none"> • Creatine Kinase (CK), total 	<ol style="list-style-type: none"> 1. Modules 1310, 1314, 1318, 1322 – Chemistry/Endocrinology/Therapeutic Drugs (CET) 2. Module 1260 – Cardiac Markers (IE)
	<ul style="list-style-type: none"> • Total Bilirubin 	<ol style="list-style-type: none"> 1. Modules 1310, 1314, 1318, 1322 – Chemistry/Endocrinology/Therapeutic Drugs (CET) 2. Modules 1430 – Elevated Bilirubin (NB)
	<ul style="list-style-type: none"> • hCG, serum 	<ol style="list-style-type: none"> 1. Modules 1310, 1314, 1318, 1322 – Chemistry/Endocrinology/Therapeutic Drugs (CET) 2. Module 1480, 1495 – hCG serum, Qualitative (HCG)
Hematology & Coagulation	<ul style="list-style-type: none"> • Hemoglobin • Hematocrit 	<ol style="list-style-type: none"> 1. Hematology (AF, AS, AT): Modules 2270, 2285, 2290, 2190, 2200 2. Module 1570 – Blood Gas Hemoglobin/Hematocrit Add on (BGH) 3. Module 1330 – CO-Oximetry (CO) 4. Module 1345 – i-STAT Chemistries PLUS (BGB)
	<ul style="list-style-type: none"> • Protime/INR 	<ol style="list-style-type: none"> 1. Module 2060 – Coagulation Basic (CA) 2. Module 2370 – Protime/INR – i-STAT/CoaguSense (PRC) 3. Module 2350 – Protime/INR – CoaguChek XS/Plus/Pro (PXS)
Immunology*	<ul style="list-style-type: none"> • Anti-HIV • Anti-HIV/p24 Antigen (not differentiated) 	<ol style="list-style-type: none"> 1. Anti-HIV/p24 (not differentiated) 2. Anti-HIV
	<ul style="list-style-type: none"> • Anti-Hbc, IgM • Anti-Hbc, total 	<ol style="list-style-type: none"> 1. Anti-Hbc, IgM 2. Anti-Hbc, total



A NOTE FOR CAP ACCREDITED CUSTOMERS

We are accepted by the CAP Laboratory Accreditation Program (LAP) to fulfill PT requirements for most analytes and procedures. Analytes and procedures not accepted are indicated in this catalog with an asterisk (*) after the analyte name.

Analytes noted as educational in the catalog will not fulfill CAP PT requirements. Enrollment in a CAP approved PT program is required for these analytes.

You can determine if enrollment in PT is required by reviewing the information on your CAP Laboratory Activity Menu report. You should carefully review this information before placing your order with us.

PT PRODUCTS

PRIMARY PRODUCTS include one set of samples and reporting for one set of results per shipment unless otherwise specified. Analytes and procedures listed under the Regulated column are regulated under CLIA. Add-on products may only be ordered in conjunction with specific primary products.

QUALITY EVALUATION (QE) PRODUCTS include one set of samples and reporting for one set of results per shipment unless otherwise specified. These products can only be ordered in conjunction with a corresponding primary product and may be ordered in multiples. Result sets reported for any QE products may be ordered for QA purposes, to test a secondary method, or for additional sample volume. Contact WSLH PT for QE products not listed.

ADDITIONAL PRODUCTS include Assayed Sample Sets, Calibration Verification/Linearity Products, Off-Schedule Proficiency Testing, and Online Training and Competency.

NEW FOR 2026

PAGE	PRODUCT NAME
15	Chemistry - Waived Lipids and Glucose (WCL)
24	Hematology - PixCell (PIX)
36	Bacteriology - Limited (MBC)
36	Bacteriology - Comprehensive (MBC)
37	Bacteriology - Blood Culture (MBC)
49	SARS-CoV2/Flu Antigen Combo - Waived (CFW)
54	Urine hCG (UH)

Blood Gases / Electrolytes / Metabolites (BG)

Single set of five, 3mL aqueous samples compatible with most blood gas instruments including ABL, Cobas, EPOC, GEM, i-STAT, OPTI, RAPIDLab, RAPIDPoint and OTHER systems.

	CLIA REGULATED		UNREGULATED	
ANALYTES	<ul style="list-style-type: none"> Carbon dioxide, total Chloride Creatinine Glucose pCO₂ 	<ul style="list-style-type: none"> pH pO₂ Potassium Sodium Urea nitrogen (BUN) 	<ul style="list-style-type: none"> Ionized calcium Ionized magnesium * Lactate 	
2026 Ship Dates	March 2	June 22	October 26	Three shipments per year Five samples per shipment

Item PT01050
QE Product Item PT01060

CLIA REGULATED ANALYTES SCORE TRANSMISSION

If reporting any of the following analytes in multiple modules, score transmission order can be found on page 6.
Chloride • CO₂ • Creatinine • Glucose • Potassium • Sodium • Urea Nitrogen (BUN)

* Analyte(s) not yet accepted by the CAP Laboratory Accreditation Program

Blood Gas Hemoglobin / Hematocrit (BGH), add-on to BG

Single set of five, 2.5mL aqueous samples. This product can be ordered in conjunction with BG (above).

- i-STAT users are encouraged to order BGB (below) instead of BG with BGH to save money and cartridges.
- IL GEM and ABL90 FLEX are not compatible; these users should order CO-Oximetry (page 10).

	CLIA REGULATED		UNREGULATED	
ANALYTES	<ul style="list-style-type: none"> Hematocrit 	<ul style="list-style-type: none"> Hemoglobin 		
2026 Ship Dates	March 2	June 22	October 26	Three shipments per year Five samples per shipment

Add-on to BG Item PT01570
QE Product Item PT01580

CLIA REGULATED ANALYTES SCORE TRANSMISSION

If reporting any of the following analytes in multiple modules, score transmission order can be found on page 6.
Hematocrit • Hemoglobin

i-STAT Chemistries PLUS (BGB)

2.5mL BLUE aqueous samples intended for use on i-STAT systems. Includes Hemoglobin and Hematocrit. Single set of five samples.

	CLIA REGULATED		UNREGULATED	
ANALYTES	<ul style="list-style-type: none"> Carbon dioxide, total Chloride Creatinine Glucose Hematocrit Hemoglobin 	<ul style="list-style-type: none"> pCO₂ pH pO₂ Potassium Sodium Urea nitrogen (BUN) 	<ul style="list-style-type: none"> Ionized calcium Lactate 	
2026 Ship Dates	March 2	June 22	October 26	Three shipments per year Five samples per shipment

Item PT01345
QE Product Item PT01347

CLIA REGULATED ANALYTES SCORE TRANSMISSION

If reporting any of the following analytes in multiple modules, score transmission order can be found on page 6.
Chloride • CO₂ • Creatinine • Glucose • Hematocrit • Hemoglobin • Potassium • Sodium • Urea Nitrogen (BUN)

CHEMISTRY

▲ Blood Gas / Oximetry

CO-Oximetry (CO)

2mL samples of stabilized hemoglobin solution.

	CLIA REGULATED		UNREGULATED	
ANALYTES	• Hematocrit	• Hemoglobin, total	• Carboxyhemoglobin • Methemoglobin	• Oxyhemoglobin
2026 Ship Dates	March 2	June 22	October 26	Three shipments per year Five samples per shipment

Item PT01330
QE Product Item PT01340

CLIA REGULATED ANALYTES SCORE TRANSMISSION
If reporting any of the following analytes in multiple modules, score transmission order can be found on page 6.
Hematocrit • Hemoglobin

i-STAT Chemistries - Waived Methods (BGW)

2.5mL aqueous samples intended for waived i-STAT cartridges. Laboratories using non-waived methods should refer to BGB or BG products on page 9.

	CLIA REGULATED		UNREGULATED
ANALYTES			• Creatinine
2026 Ship Dates	March 2	June 22	Two shipments per year Three samples per shipment

Item PT01400
QE Product Item PT01425



Alcohol/Ketones, serum (AM)

Item PT01000
QE Product Item PT01010

2mL liquid samples. Beta-hydroxybutyrate is compatible with instrumentation using Stanbio reagent as well as with POC meters such as Abbott Xceed Pro and Stanbio STAT-site M.

	CLIA REGULATED		UNREGULATED	
ANALYTES	• Alcohol (ethanol)		• Acetone (qualitative) • Acetone (semi-quantitative) • Beta-hydroxybutyrate	
2026 Ship Dates	February 16	May 18	September 28	Three shipments per year Five samples per shipment

Ammonia (NH)

Item PT01020
QE Product Item PT01045

2mL liquid samples.

	CLIA REGULATED		UNREGULATED	
ANALYTES			• Ammonia	
2026 Ship Dates	February 16	September 28	Two shipments per year Three samples per shipment	

Bilirubin - Elevated (NB)

Item PT01430
QE Product Item PT01440

1mL liquid samples containing elevated levels of bilirubin similar to those found in neonates and liver disease.

	CLIA REGULATED		UNREGULATED	
ANALYTES	• Bilirubin, total		• Bilirubin, direct	
2026 Ship Dates	February 16	May 18	September 28	Three shipments per year Five samples per shipment

CLIA REGULATED ANALYTES SCORE TRANSMISSION

If reporting any of the following analytes in multiple modules, score transmission order can be found on page 6.
Bilirubin, total

CHEMISTRY

▲ General

Blood Lead - 5 Samples (PB)

1mL whole blood samples.

	CLIA REGULATED		UNREGULATED	
ANALYTES	• Blood lead			
2026 Ship Dates	February 16	May 18	September 28	Three shipments per year Five samples per shipment

Item PT01080
QE Product Item PT01085

Blood Lead - 3 Samples (BL)

1mL whole blood samples.

	CLIA REGULATED		UNREGULATED	
ANALYTES			• Blood lead	
2026 Ship Dates	February 16	September 28	Two shipments per year Three samples per shipment	

Item PT01070
QE Product Item PT01077

Body Fluid Chemistry (PC)

3mL liquid samples intended to simulate pleural, peritoneal, and miscellaneous body fluids.

	CLIA REGULATED		UNREGULATED	
ANALYTES			<ul style="list-style-type: none"> • Albumin • Amylase • Cholesterol • Creatinine • Glucose 	<ul style="list-style-type: none"> • LDH • pH (quantitative) • Protein • Triglycerides
2026 Ship Dates	February 16	September 28	Two shipments per year Three samples per shipment	

For spinal fluid, see SF product on page 17.
For urine, see CU on page 18.

Body Fluid pH - Visual (PH)

0.5mL liquid samples intended for pH measurement by color comparison methods including amniotic and miscellaneous body fluid pH measurement. Samples are compatible with non-nitrazine and nitrazine test strips, swabs, and paper.

	CLIA REGULATED		UNREGULATED	
ANALYTES			<ul style="list-style-type: none"> • pH (color comparison) • pH interpretation (ruptured, not ruptured) 	
2026 Ship Dates	February 16	September 28	Two shipments per year Three samples per shipment	

Item PT01150
QE Product Item PT01175

For urine pH, see UR product on page 54.
For Amniotic Fluid Detection by protein methods, see AE product on page 52

Cardiac Markers - 5 Samples (IE) Cardiac Markers - 3 Samples (TM)

1.5mL liquid samples. Compatible with automated methods such as Triage, Architect, Beckman Coulter, Roche, Siemens, Vitros, and i-STAT. For i-STAT hsTnI, see product TNIH below. D-dimer in this module is for laboratories using the Triage. Other instrumentation, see DD product on page 20.

	CLIA REGULATED		UNREGULATED	
ANALYTES - IE	<ul style="list-style-type: none"> • BNP • CK-MB • CK, total 	<ul style="list-style-type: none"> • hs-CRP • proBNP • Troponin I 	<ul style="list-style-type: none"> • D-dimer (Triage only) • Myoglobin 	<ul style="list-style-type: none"> • Troponin I, high sensitivity * • Troponin T, high sensitivity
ANALYTES - TM			<ul style="list-style-type: none"> • BNP (waived only) • D-dimer (Triage only) • Myoglobin 	<ul style="list-style-type: none"> • Troponin I, high sensitivity • Troponin T, high sensitivity
2026 Ship Dates IE	February 16	May 18	September 28	Three shipments per year Five samples per shipment
2026 Ship Dates TM	February 16	September 28		Two shipments per year Three samples per shipment

IE Item PT01260
QE Product IE Item PT01270
TM Item PT01230
QE Product TM Item PT01255

CLIA REGULATED ANALYTES SCORE TRANSMISSION

If reporting any of the following analytes in multiple modules, score transmission order can be found on page 6. Creatine Kinase (CK), total

CAP accredited labs must test five samples for non-waived methods except for D-dimer and Myoglobin.

* Analyte(s) not yet accepted by the CAP Laboratory Accreditation Program

For CRP methods screening for non-specific inflammatory disease, see XP product on page 28.

Cardiac Markers - i-STAT hsTnI (TNIH)

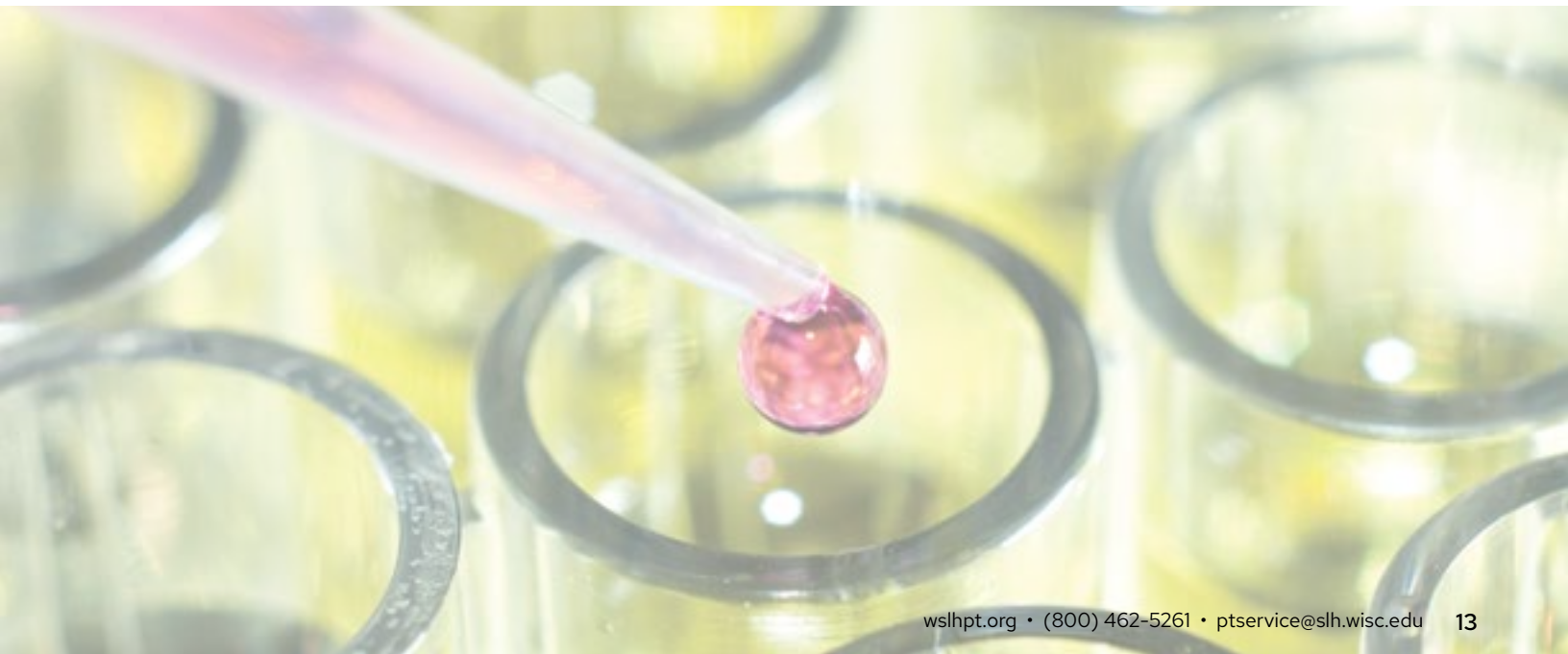
1mL liquid samples. Samples intended for i-STAT analyzers reporting hsTnI.

	CLIA REGULATED	UNREGULATED
ANALYTES		<ul style="list-style-type: none"> • Troponin I, high sensitivity *
2026 Ship Dates	September 28	Three shipments per year Five samples per shipment

Item PT01261
QE Product Item PT01262

NEW!

* Analyte(s) not yet accepted by the CAP Laboratory Accreditation Program



CHEMISTRY

▲ General

Chemistry/Endocrinology/Therapeutic Drugs (CET)

5mL liquid samples.

	CLIA REGULATED	UNREGULATED	
ANALYTES	<ul style="list-style-type: none"> • Acetaminophen • ALT • Albumin • ALKP • Amylase • AST • Bilirubin, total • Calcium, total • Chloride • Cholesterol, HDL • Cholesterol, LDL (measured) • Cholesterol, total • CO₂ • Creatine Kinase (CK) • Creatinine • Digoxin • GGT • Glucose 	<ul style="list-style-type: none"> • hCG, quantitative (serum) • Iron, total • LDH • Lithium • Magnesium • Phosphorus • Potassium • Protein, total • Salicylate • Sodium • TSH • T4, free (FT4) • TIBC, measured • Triglycerides • Urea nitrogen (BUN) • Uric acid • Valproic acid • Vancomycin 	<ul style="list-style-type: none"> • Bilirubin, direct • Cholesterol, LDL (calculated) • Lactate • Lipase • Osmolality • T3, free (FT3) • TIBC, calculated • UIBC *

CET Educational Analytes

The following analytes are offered as educational challenges only. CLIA regulated laboratories must enroll with another PT provider in order to meet CLIA regulations for these analytes.

	EDUCATIONAL			
ANALYTES	<ul style="list-style-type: none"> • <i>Alpha-fetoprotein</i> • <i>Carbamazepine</i> • <i>Cortisol</i> 	<ul style="list-style-type: none"> • <i>Gentamicin</i> • <i>Phenobarbital</i> • <i>Phenytoin</i> 	<ul style="list-style-type: none"> • <i>T3, total</i> • <i>T4, total</i> • <i>T-Uptake</i> 	<ul style="list-style-type: none"> • <i>Theophylline</i> • <i>Tobramycin</i>

2026 Ship Dates February 16 May 18 September 28 Three shipments per year
Five samples per shipment

hCG, serum - Qualitative (HCG)

1mL liquid samples.

	CLIA REGULATED	UNREGULATED
ANALYTES	<ul style="list-style-type: none"> • hCG, qualitative (serum) 	

2026 Ship Dates February 16 May 18 September 28 Three shipments per year
Five samples per shipment

Order by number of analytes reported

1-11 - Item PT01310
12-21 - Item PT01314
22-30 - Item PT01318
31+ - Item PT01322
QE Product Item PT01326

CLIA REGULATED ANALYTES SCORE TRANSMISSION

If reporting any of the following analytes in multiple modules, score transmission order can be found on page 6.

Bilirubin, total • Chloride • CO₂ • Creatine Kinase (CK) • Creatinine • Glucose • hCG, serum • Potassium • Sodium • Urea Nitrogen (BUN)

i-STAT users may enroll in CET for hCG quantitative. For i-STAT chemistry analytes, see BG, BGB, or BGW products on page 9, 10.

* Analyte(s) not yet accepted by the CAP Laboratory Accreditation Program

Item PT01480
Add-on to any CET Product Item PT01495
QE Product Item PT01490

CLIA REGULATED ANALYTES SCORE TRANSMISSION

If reporting any of the following analytes in multiple modules, score transmission order can be found on page 6.

hCG, serum

Chemistry - Waived Methods (WC)

5mL liquid samples intended for Abaxis Piccolo analyzer (waived cartridges).

- Abaxis Piccolo non-waived cartridges order CET product on the previous page.
- Cholestech LDX, CardioChek, and Roche Accutrend Plus analyzers order WCL product below.

Item PT01282
QE Product Item PT01284

For i-STAT chemistry waived cartridges,
see BGW product on page 10.

ANALYTES	CLIA REGULATED		UNREGULATED	
			<ul style="list-style-type: none"> • ALT • Albumin • ALKP • Amylase • AST • Bilirubin, total • Calcium, total • CO₂ • Chloride • Cholesterol, HDL • Cholesterol, LDL (calculated) • Cholesterol, total 	<ul style="list-style-type: none"> • Creatine Kinase (CK) • Creatinine • GGT • Glucose • Phosphorus • Potassium • Protein, total • Sodium • Triglycerides • Urea nitrogen (BUN) • Uric acid
2026 Ship Dates	February 16	September 28	Two shipments per year Three samples per shipment	

Chemistry - Waived Lipids and Glucose (WCL)

1mL liquid samples intended for Cholestech LDX and CardioChek waived analyzers.

Item PT01288
QE Product Item PT01289

For CardioChek eGLU (glucose electrochemical test strips), see WBG product below.

ANALYTES	CLIA REGULATED		UNREGULATED	
			<ul style="list-style-type: none"> • Cholesterol, HDL • Cholesterol, LDL (calculated) 	<ul style="list-style-type: none"> • Cholesterol, total • Glucose • Triglycerides
2026 Ship Dates	April 6	October 12	Two shipments per year Three samples per shipment	

NEW!

Glucose Whole Blood (WBG)

Whole blood samples intended for waived glucose meters. Samples are compatible with blood glucose meters and instruments, including HemoCue glucose systems, used for ancillary/point of care testing.

Item PT01880
QE Product Item PT01895
Additional Samples Item PT01884

QE product allows reporting for up to 20 result sets.
Additional Samples product is samples only, no result reporting.
WBG product also available in POC Package, see page 55.

ANALYTES	CLIA REGULATED		UNREGULATED	
			<ul style="list-style-type: none"> • Whole Blood Glucose (meters) • Whole Blood Glucose (instruments) 	
2026 Ship Dates	April 6	October 12	Two shipments per year Three samples per shipment	

CHEMISTRY

▲ General

Hemoglobin A1c (GHR)

1mL whole blood samples. These samples are NOT compatible with the Afinion analyzer, see GHRA product below.

	CLIA REGULATED		UNREGULATED	
ANALYTES	• Hemoglobin A1c			
2026 Ship Dates	February 16	May 18	September 28	Three shipments per year Five samples per shipment

Item PT01524
QE Product Item PT01529

Hemoglobin A1c - Waived Methods (GH)

1mL whole blood samples. These samples are NOT compatible with the Afinion analyzer, see GHA product below.

	CLIA REGULATED		UNREGULATED	
ANALYTES			• Hemoglobin A1c	
2026 Ship Dates	April 6	October 12	Two shipments per year Three samples per shipment	

Item PT01532
QE Product Item PT01533

Hemoglobin A1c - Afinion (GHRA)

0.5mL whole blood samples intended for use with the Afinion using the Afinion Dx moderately complex cartridge.

	CLIA REGULATED		UNREGULATED	
ANALYTES	• Hemoglobin A1c			
2026 Ship Dates	February 16	May 18	September 28	Three shipments per year Five samples per shipment

Item PT01525
QE Product Item PT01527

Hemoglobin A1c - Afinion - Waived Methods (GHA)

0.5mL whole blood samples intended for use with the Afinion analyzer. Afinion analyzers using the Afinion Dx moderately complex cartridge must enroll in the 5 sample GHRA program above.

	CLIA REGULATED		UNREGULATED	
ANALYTES			• Hemoglobin A1c	
2026 Ship Dates	April 6	October 12	Two shipments per year Three samples per shipment	

Item PT01534
QE Product Item PT01535

Immunoassay Chemistry (CS)

5mL liquid samples.

Item PT01683
QE Product Item PT01684

	CLIA REGULATED	UNREGULATED		
ANALYTES	<ul style="list-style-type: none"> • Estradiol • Ferritin • Folate • FSH • LH • Progesterone 	<ul style="list-style-type: none"> • Prolactin • PSA, total • Testosterone, total • Vitamin B12 		
		<ul style="list-style-type: none"> • DHEA Sulfate * • Homocysteine * • Prealbumin * • Transferrin 		
Educational Analyte				
CLIA regulated laboratories must enroll with another PT provider in order to meet CLIA regulations for CEA.				
	EDUCATIONAL			
ANALYTES	• CEA			
2026 Ship Dates	February 16	May 18	September 28	Three shipments per year Five samples per shipment

* Analyte(s) not yet accepted by the CAP Laboratory Accreditation Program

Immunoassay Chemistry B (CSB)

Lyophilized serum samples. A 2.0mL class A volumetric pipette and reagent-grade water are recommended for reconstitution.

Item PT01712
QE Product Item PT01713

	CLIA REGULATED	UNREGULATED		
ANALYTES	• PTH, intact	<ul style="list-style-type: none"> • 25-OH Vitamin D, total • C-peptide * • Insulin * 		
2026 Ship Dates	February 16	May 18	September 28	Three shipments per year Five samples per shipment

* Analyte(s) not yet accepted by the CAP Laboratory Accreditation Program

Procalcitonin (PCT)

Lyophilized serum samples. A 2.0mL class A volumetric pipette and reagent-grade water are recommended for reconstitution.

Item PT01900
QE Product Item PT01905

	CLIA REGULATED	UNREGULATED	
ANALYTES		• Procalcitonin	
2026 Ship Dates	February 16	September 28	Two shipments per year Three samples per shipment

Spinal Fluid Chemistry (SF)

2mL liquid samples.

Item PT01720
Add-on to PC Product Item PT01722
QE Product Item PT01745

	CLIA REGULATED	UNREGULATED	
ANALYTES		<ul style="list-style-type: none"> • Glucose • Lactic acid * • Protein 	
2026 Ship Dates	February 16	September 28	Two shipments per year Three samples per shipment

* Analyte(s) not yet accepted by the CAP Laboratory Accreditation Program

CHEMISTRY

▲ General

Tumor Markers (MT)

2mL liquid samples.

EDUCATIONAL				
ANALYTES	• Beta-2 Microglobulin	• CA 15-3 • CA 19-9	• CA 27.29 • CA 125	• PSA, free
2026 Ship Dates	February 16	May 18	September 28	Three shipments per year Five samples per shipment

Item PT01752
QE Product Item PT01753

+EDUCATIONAL: Scores not sent to CMS or other accrediting agency. Labs must enroll with another PT provider to meet CLIA regulations for CLIA regulated analytes.

CEA and PSA, total are available under the Immunoassay Chemistry (CS) product on page 17.

Urine Chemistry (CU)

10mL liquid samples. These samples are NOT compatible with the Afinion analyzer, see ACR product below.

CLIA REGULATED		UNREGULATED	
ANALYTES		• A/C ratio, quantitative • A/C ratio, semi-quantitative • Amylase • Calcium • Chloride • Creatinine, quantitative • Creatinine, semi-quantitative * • Glucose • Magnesium	• Microalbumin, quantitative • Microalbumin, semi-quantitative * • Osmolality • Phosphorus • Potassium • Protein • Sodium • Urea nitrogen • Uric acid
2026 Ship Dates	February 16	September 28	Two shipments per year Three samples per shipment

Order by number of analytes reported

1-3 - Item PT01780
QE Product 1-3 - Item PT01785
4-10 - Item PT01786
QE Product 4-10 - Item PT01791
11+ - Item PT01792
QE Product 11+ - Item PT01797

* Analyte(s) not yet accepted by the CAP Laboratory Accreditation Program

Urine Chemistry - Afinion (ACR)

3mL liquid samples intended for use with the Afinion analyzer.

CLIA REGULATED		UNREGULATED	
ANALYTES		• A/C ratio • Creatinine *	• Microalbumin
2026 Ship Dates	February 16	September 28	Two shipments per year Three samples per shipment

Item PT01960

* Analyte(s) not yet accepted by the CAP Laboratory Accreditation Program

Urine Drug Adulteration Test (UDA)

Item PT01950
QE Product Item PT01955

10mL liquid samples for use with urine adulterant detection methods.

ANALYTES	CLIA REGULATED		UNREGULATED	
				<ul style="list-style-type: none"> • Creatinine • Nitrites • Oxidants
2026 Ship Dates	February 16	May 18	September 28	Three shipments per year Two samples per shipment

Urine Drug Screen (UD)

Item PT01810
QE Product Item PT01835

10mL liquid samples intended for the qualitative detection of drugs using urine immunoassay screening procedures.

ANALYTES	CLIA REGULATED		UNREGULATED	
				<ul style="list-style-type: none"> • 6-Acetylmorphine (6-AM) • Amphetamines • Barbiturates • Benzodiazepines • Buprenorphine • Cannabinoids (THC) • Cocaine metabolites • Cotinine • EDDP • Ethanol (Alcohol) • Fentanyl
2026 Ship Dates	February 16	May 18	September 28	Three shipments per year Two samples per shipment

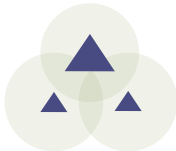
* Laboratories accredited by CAP contact WSLH PT about acceptance for these analytes.

Urine Drug Screen - Ethyl Glucuronide (ETG)

Item PT01980

5mL liquid samples intended for the qualitative detection of EtG in urine.

ANALYTES	CLIA REGULATED		UNREGULATED	
				• Ethyl Glucuronide (EtG)
2026 Ship Dates	February 16	May 18	September 28	Three shipments per year Two samples per shipment



COAGULATION

Activated Clotting Time (CT)

Lyophilized samples with paired diluents, calcium chloride solutions (activator), and method-differentiated handling instructions. Compatible with Hemochron, HemoTec, i-STAT, Medtronic HMS and OTHER methods.

Item PT02030
QE Product Item PT02052

ANALYTES	CLIA REGULATED		UNREGULATED
			• Activated clotting time (ACT)
2026 Ship Dates	February 2	August 31	Two shipments per year Three samples per shipment

Coagulation - Basic (CA)

Lyophilized plasma samples. Use of a 1.0mL class A volumetric pipette and reagent-grade water are recommended for reconstitution. NOT compatible with whole blood systems (i-STAT, ITC, CoaguChek, or Coag-Sense). INR Calculation "dry exercise" is available for CAP-accredited labs.

Item PT02060
QE Product Item PT02070

CLIA REGULATED ANALYTES SCORE TRANSMISSION
If reporting any of the following analytes in multiple modules, score transmission order can be found on page 6.
Prottime/INR

ANALYTES	CLIA REGULATED		UNREGULATED
		• Activated partial thromboplastin time (APTT)	• Prottime (PT) • INR
2025 Ship Dates	February 2	June 1	August 31 Three shipments per year Five samples per shipment

D-dimer (DD)

1.0mL liquid samples. Compatible with most D-dimer kits including Sysmex CA and CS, Triage, Stago, and OTHER methods.

Item PT02080
QE Product Item PT02105

Customers using Triage for cardiac markers see IE or TM product on page 13.

ANALYTES	CLIA REGULATED		UNREGULATED
			• D-dimer, quantitative
2026 Ship Dates	February 2	August 31	Two shipments per year Three samples per shipment

COAGULATION

Protime / INR - Whole Blood, CoaguChek XS (PXS)

Lyophilized samples intended for non-waived Roche CoaguChek XS systems. Also available to waived system users wanting more challenges per year. Waived system users reporting only INR may consider CXSW product.

ANALYTES	CLIA REGULATED		UNREGULATED	
	• Protime (PT)	• INR		
2026 Ship Dates	February 2	June 1	August 31	Three shipments per year Five samples per shipment

Item PT02350
QE Product Item PT02360

CLIA REGULATED ANALYTES SCORE TRANSMISSION
If reporting any of the following analytes in multiple modules, score transmission order can be found on page 6.
Protime/INR

INR - CoaguChek - Waived Methods (CXSW)

Lyophilized samples for CoaguChek XS or CoaguChek XS Plus (waived use) ONLY.

ANALYTES	CLIA REGULATED		UNREGULATED	
			• INR	
2026 Ship Dates	February 2	August 31		Two shipments per year Three samples per shipment

Item PT02320
QE Product Item PT02345

Protime / INR - Whole Blood, i-STAT and Coag-Sense (PRC)

Lyophilized samples intended for i-STAT systems; i-STAT users may report both Protime and INR for proficiency testing purposes. Also compatible with Coag-Sense systems where non-waived users may report both Protime and INR. Coag-Sense waived system users reporting only INR may consider CW product.

ANALYTES	CLIA REGULATED		UNREGULATED	
	• Protime (PT)	• INR		
2026 Ship Dates	February 2	June 1	August 31	Three shipments per year Five samples per shipment

Item PT02370
QE Product Item PT02380

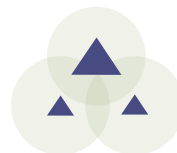
CLIA REGULATED ANALYTES SCORE TRANSMISSION
If reporting any of the following analytes in multiple modules, score transmission order can be found on page 6.
Protime/INR

INR - Coag-Sense - Waived Methods (CW)

Lyophilized samples intended for Coag-Sense (waived use).

ANALYTES	CLIA REGULATED		UNREGULATED	
			• INR	
2026 Ship Dates	February 2	August 31		Two shipments per year Three samples per shipment

Item PT02310
QE Product Item PT02315



HEMATOLOGY

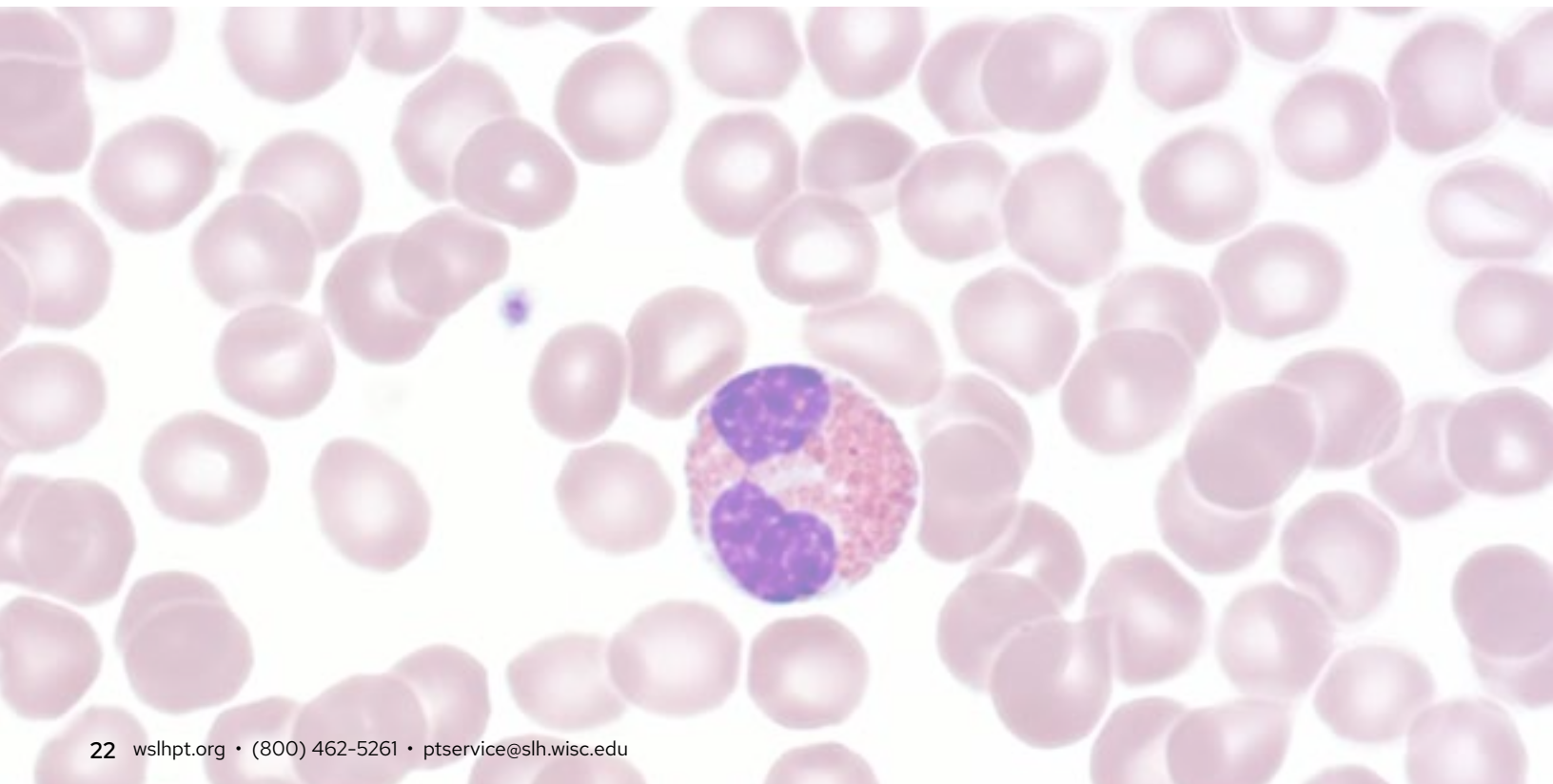
Hematology samples are instrument specific.

Please use the table below to choose the correct sample/instrument combination.

INSTRUMENTS

HEMATOLOGY

	CBC OR CBC WITH AUTO DIFF						RETICULOCYTES	
	AF3	AF4	AF5	AS	AT	PIX	RTB	RTS
Abbott CELL-DYN 1800, Emerald (Not compatible with Emerald 22)					X			
ABX Micros 60 and ES 60					X			
Beckman Coulter AcT diff/diff2					X			
Beckman Coulter DxH 500, DxH 520, DxH 560	X							
Beckman Coulter DxH 600, DxH 690T, DxH 800, DxH 900		X					X	
Drew Scientific D3					X			
Medonic M series, Medonic CA-620					X			
PixCell Hemoscreen						X		
Siemens ADVIA 120							X	
Sysmex XS1000i			X					
Sysmex series: XN, XN-L			X					X
Sysmex KX-21/21N, poch 100i, XP-300, XQ-320				X				



HEMATOLOGY

Hematology - Comprehensive (AF)

Whole blood samples for automated instruments with a 5-6 part differential.

ANALYTES	CLIA REGULATED		UNREGULATED
		<ul style="list-style-type: none"> Erythrocyte count (RBC) Hematocrit Hemoglobin 	<ul style="list-style-type: none"> Leukocyte count (WBC) Platelet count WBC differential, automated
2026 Ship Dates	February 2	June 1	August 31
	Three shipments per year Five samples per shipment		

AF3 Item PT02270
 QE Product AF3 Item PT02280
 AF4 Item PT02285
 QE Product AF4 Item PT02286
 AF5 Item PT02290
 QE Product AF5 Item PT02300

CLIA REGULATED ANALYTES SCORE TRANSMISSION
 If reporting any of the following analytes in multiple modules, score transmission order can be found on page 6.
 Hematocrit • Hemoglobin

AF Item numbers are instrument specific.
 See instrument table on page 22.

Hematology - Limited Sysmex (AS)

Whole blood samples for Sysmex instruments with a 2-3 part differential.

ANALYTES	CLIA REGULATED		UNREGULATED
		<ul style="list-style-type: none"> Erythrocyte count (RBC) Hematocrit Hemoglobin 	<ul style="list-style-type: none"> Leukocyte count (WBC) Platelet count WBC differential, automated
2026 Ship Dates	February 2	June 1	August 31
	Three shipments per year Five samples per shipment		

Item PT02200
 QE Product Item PT02210

CLIA REGULATED ANALYTES SCORE TRANSMISSION
 If reporting any of the following analytes in multiple modules, score transmission order can be found on page 6.
 Hematocrit • Hemoglobin

AS is instrument specific.
 See instrument table on page 22.

Hematology - Limited (AT)

Whole blood samples for automated instruments with a 2-3 part differential or no differential.

ANALYTES	CLIA REGULATED		UNREGULATED
		<ul style="list-style-type: none"> Erythrocyte count (RBC) Hematocrit Hemoglobin 	<ul style="list-style-type: none"> Leukocyte count (WBC) Platelet count WBC differential, automated
2026 Ship Dates	February 2	June 1	August 31
	Three shipments per year Five samples per shipment		

Item PT02190
 QE Product Item PT02195

CLIA REGULATED ANALYTES SCORE TRANSMISSION
 If reporting any of the following analytes in multiple modules, score transmission order can be found on page 6.
 Hematocrit • Hemoglobin

AT is instrument specific.
 See instrument table on page 22.

HEMATOLOGY

Hematology - PixCell (PIX)

Whole blood samples for the PixCell Hemoscreen instrument with a 5 part differential.

Item PT02298
QE Product Item PT02299

ANALYTES	CLIA REGULATED		UNREGULATED	
		<ul style="list-style-type: none"> Erythrocyte count (RBC) Hematocrit Hemoglobin 	<ul style="list-style-type: none"> Leukocyte count (WBC) Platelet count WBC differential, automated 	<ul style="list-style-type: none"> MCH MCHC MCV MPV RDW
2026 Ship Dates	February 2	June 1	August 31	Three shipments per year Five samples per shipment

PIX is instrument specific.
See instrument table on page 22.

Hematology - Cell Identification (XI)

Seven images (paper and online versions).

Item PT02220

For laboratories reporting both an automated differential and cell identification, both scores will be transmitted to accreditation agencies.

ANALYTES	CLIA REGULATED		UNREGULATED	
		<ul style="list-style-type: none"> Cell identification 		<ul style="list-style-type: none"> Cell identification, educational
2026 Ship Dates	February 2	June 1	August 31	Three shipments per year Five regulated and two educational challenges per shipment

Reticulocytes - Beckman Coulter (RTB)

Whole blood samples for Beckman Coulter instruments.

Item PT02442
QE Product Item PT02444

RTB is instrument specific.
See instrument table on page 22.

ANALYTES	CLIA REGULATED		UNREGULATED	
				<ul style="list-style-type: none"> IRF Reticulocyte count, absolute Reticulocyte count, percent
2026 Ship Dates	February 2	August 31		Two shipments per year Three samples per shipment

Reticulocytes - Sysmex (RTS)

Whole blood samples for Sysmex instruments.

Item PT02432
QE Product Item PT02434

RTS is instrument specific.
See instrument table on page 22.

ANALYTES	CLIA REGULATED		UNREGULATED	
				<ul style="list-style-type: none"> IRF Reticulocyte count, absolute Reticulocyte count, percent Re-He
2026 Ship Dates	February 2	August 31		Two shipments per year Three samples per shipment

HEMATOLOGY

Erythrocyte Sedimentation Rate (ESR) Instruments

Sed Rate samples are instrument specific. Please use the table below to choose the correct sample/instrument combination.

INSTRUMENTS	SR	SRI	SRA
		X	
			X
	X		

Sedimentation Rate (SR)

Whole blood samples intended for manual and automated erythrocyte sedimentation rate methods.

ANALYTES	CLIA REGULATED	UNREGULATED
2026 Ship Dates	April 6 October 12	Two shipments per year Three samples per shipment

Item PT02450
QE Product Item PT02465

See instrument table above.

Sedimentation Rate - Alcor and Alifax (SRI)

Whole blood samples intended for the Alcor iSED, miniiSED, and Alifax.

ANALYTES	CLIA REGULATED	UNREGULATED
2026 Ship Dates	April 6 October 12	Two shipments per year Three samples per shipment

Item PT02520
QE Product Item PT02525

See instrument table above.

Sedimentation Rate - Sedimat 15, ESR STAT-6/PLUS (SRA)

Whole blood samples intended for Polymedco Sedimat 15, ESR STAT-6, and ESR STAT PLUS instruments.

ANALYTES	CLIA REGULATED	UNREGULATED
2026 Ship Dates	April 6 October 12	Two shipments per year Three samples per shipment

Item PT02470
QE Product Item PT02485

See instrument table above.

HEMATOLOGY

Hematocrit - Waived Methods (HW)

Liquid whole blood samples intended for use with waived hematocrit methods.

	CLIA REGULATED	UNREGULATED
ANALYTES		• Hematocrit
2026 Ship Dates	April 6 October 12	Two shipments per year Three samples per shipment

Item PT02150
QE Product Item PT02175

Hemoglobin - Waived Methods (HWG)

1mL liquid samples intended for use with waived hemoglobin systems.

- Compatible with HemoCue Hb 201, HemoPoint H2, and most other waived hemoglobin systems.
- HemoCue Hb 301 and HemoCue Hb 801 order HWH product below.

	CLIA REGULATED	UNREGULATED
ANALYTES		• Hemoglobin
2026 Ship Dates	April 6 October 12	Two shipments per year Three samples per shipment

Item PT01450
QE Product Item PT01475
HWG product also available as add-on to POC Package, see page 55.

Hemoglobin - HemoCue Hb 301 and Hb 801 - Waived (HWH)

1mL liquid samples intended for use with HemoCue Hb 301 and HemoCue Hb 801.

	CLIA REGULATED	UNREGULATED
ANALYTES		• Hemoglobin
2026 Ship Dates	April 6 October 12	Two shipments per year Three samples per shipment

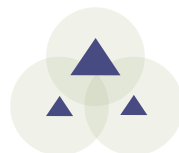
Item PT01455
QE Product Item PT01465
HWH product also available as add-on to POC Package, see page 55.

Sickle Cell Screen (SK)

Stabilized RBC samples compatible with solubility and electrophoresis sickle cell methods.

	CLIA REGULATED	UNREGULATED
ANALYTES		• Sickle cell screen
2026 Ship Dates	April 6 October 12	Two shipments per year Three samples per shipment

Item PT02490
QE Product Item PT02515



IMMUNOHEMATOLOGY

▲ Blood Bank

Blood Bank - Comprehensive (AB)

Five bar-coded 4mL whole blood samples and one 2mL whole blood donor sample for compatibility testing. Intended for use with manual and automated methods.

ANALYTES	CLIA REGULATED		UNREGULATED	
		<ul style="list-style-type: none"> • ABO group • Rh (D) typing • Unexpected antibody detection 	<ul style="list-style-type: none"> • Compatibility testing • Antibody identification 	
2026 Ship Dates	February 23	June 15	October 5	Three shipments per year Five samples per shipment

Item PT04120
QE Product Item PT04130

Samples are NOT compatible with Olympus PK7200/7300 instruments.

Blood Bank - Limited (AB)

Five bar-coded 4mL whole blood samples. Intended for use with manual and automated methods.

ANALYTES	CLIA REGULATED		UNREGULATED	
		<ul style="list-style-type: none"> • ABO group 	<ul style="list-style-type: none"> • Rh (D) typing 	
2026 Ship Dates	February 23	June 15	October 5	Three shipments per year Five samples per shipment

Item PT04140
QE Product Item PT04150

Samples are NOT compatible with Olympus PK7200/7300 instruments.

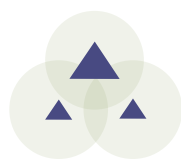
Direct Antiglobulin Test (DAT)

Three bar-coded 2mL whole blood samples for Direct Antiglobulin Testing. Intended for use with manual and automated methods.

ANALYTES	CLIA REGULATED		UNREGULATED	
				<ul style="list-style-type: none"> • DAT (Poly, IgG and Complement)
2026 Ship Dates	February 23	October 5		Two shipments per year Three samples per shipment

Item PT04145
QE Product Item PT04146

Samples are NOT compatible with Olympus PK7200/7300 instruments.



IMMUNOLOGY

CRP Immunoserology (XP)

1mL liquid samples intended for methods screening for non-specific inflammatory disease.

CLIA REGULATED		UNREGULATED	
ANALYTES		<ul style="list-style-type: none"> • C-reactive protein, qualitative * • C-reactive protein, quantitative 	
2026 Ship Dates	January 20	August 24	Two shipments per year Three samples per shipment

Item PT04160
QE Product Item PT04185

High-sensitivity CRP is now CLIA regulated. Laboratories reporting high-sensitivity CRP methods, see IE product on page 13.

* Analyte(s) not yet accepted by the CAP Laboratory Accreditation Program

Helicobacter pylori Serology (HL)

0.5mL liquid samples.

CLIA REGULATED		UNREGULATED	
ANALYTES		<ul style="list-style-type: none"> • Helicobacter pylori, total antibody 	
2026 Ship Dates	January 20	August 24	Two shipments per year Three samples per shipment

Item PT04010

For stool Helicobacter pylori, see HPSA product on page 41.
For Urease, see RUR product on page 41.

Hepatitis (YB)

1.5mL liquid samples. Compatible with traditional hepatitis methods and OraQuick HCV Rapid Antibody Test.

CLIA REGULATED		UNREGULATED	
ANALYTES	<ul style="list-style-type: none"> • Anti-HBc, IgM • Anti-HBc, total antibody 	<ul style="list-style-type: none"> • Anti-HBs • Anti-HCV • HBsAg 	<ul style="list-style-type: none"> • Anti-HAV, IgM
2026 Ship Dates	January 20	May 11	August 24
			Three shipments per year Five samples per shipment

Item PT04190
Add-on to HV Item PT04195
QE Product Item PT04191

CLIA REGULATED ANALYTES SCORE TRANSMISSION
If reporting any of the following analytes in multiple modules, score transmission order can be found on page 6.
Anti-Hbc, IgM • Anti-Hbc, total

Hepatitis C - Waived Methods (YBC)

1mL liquid serum samples. Compatible with waived methods including OraQuick HCV Rapid Antibody Test.

CLIA REGULATED		UNREGULATED	
ANALYTES		<ul style="list-style-type: none"> • Anti-HCV 	
2026 Ship Dates	January 20	August 24	Two shipments per year Three samples per shipment

Item PT04192
QE Product Item PT04193

HIV (HV)

1mL liquid samples. Compatible with rapid and traditional testing methods used to test for Anti-HIV-1, Anti-HIV-1/2, or HIV-1 p24 Antigen.

	CLIA REGULATED		UNREGULATED	
ANALYTES	<ul style="list-style-type: none"> • Anti-HIV • Anti-HIV/p24 Antigen (not differentiated) 		<ul style="list-style-type: none"> • p24 Antigen 	
2026 Ship Dates	January 20	May 11	August 24	Three shipments per year Five samples per shipment

Item PT04020
QE Product Item PT04030

CLIA REGULATED ANALYTES SCORE TRANSMISSION

If reporting any of the following analytes in multiple modules, score transmission order can be found on page 6.
Anti-HIV • Anti-HIV/p24 Antigen (not differentiated)

HIV - Waived Methods (HVW)

1mL liquid samples. Compatible with waived rapid kits used to test for Anti-HIV-1, Anti-HIV-1/2, or HIV-1 p24 Antigen.

	CLIA REGULATED		UNREGULATED	
ANALYTES			<ul style="list-style-type: none"> • Anti-HIV • p24 Antigen 	
2026 Ship Dates	January 20	August 24		Two shipments per year Three samples per shipment

Item PT04040
QE Product Item PT04062

Infectious Disease Serology (MMV)

0.5mL lyophilized serum samples.

	CLIA REGULATED		UNREGULATED	
ANALYTES			<ul style="list-style-type: none"> • Measles IgG, qualitative* • Measles IgM, qualitative • Mumps IgG, qualitative • Mumps IgM, qualitative • Varicella Zoster IgG, qualitative * • Varicella Zoster IgM, qualitative 	
2026 Ship Dates	January 20	August 24		Two shipments per year Three samples per shipment

Item PT04320

* Analyte(s) not yet accepted by the CAP Laboratory Accreditation Program

IMMUNOLOGY

Lyme Disease Serology (LY)

Item PT04200

0.5mL liquid samples.

CLIA REGULATED		UNREGULATED	
ANALYTES			• Lyme Disease Antibody (IgG, IgM, or total)
2026 Ship Dates	January 20	August 24	Two shipments per year Three samples per shipment

Mono Immunoserology (ZM)

Item PT04210

0.65mL liquid samples.

CLIA REGULATED		UNREGULATED	
ANALYTES	• Infectious mononucleosis		
2026 Ship Dates	January 20	May 11	August 24
			Three shipments per year Five samples per shipment

Mono Immunoserology - Waived Methods (MW)

Item PT04220

QE Product Item PT04245

0.65mL liquid samples.

CLIA REGULATED		UNREGULATED	
ANALYTES			• Infectious mononucleosis
2026 Ship Dates	January 20	August 24	Two shipments per year Three samples per shipment

MW product also available as add-on to POC Package, see page 55.

Mycoplasma Antibody (MP)

Item PT04300

0.5mL liquid samples. Compatible with kits that detect antibody to Mycoplasma pneumoniae.

CLIA REGULATED		UNREGULATED	
ANALYTES			• Mycoplasma antibody
2026 Ship Dates	January 20	August 24	Two shipments per year Three samples per shipment

Rheumatoid Factor Immunoserology (ZR)

Item PT04250
Add-on to ZM Product Item PT04255

1mL liquid samples.

ANALYTES	CLIA REGULATED		UNREGULATED	
		• Rheumatoid factor, qualitative		• Rheumatoid factor, quantitative • Rheumatoid factor, titer (educational)
2026 Ship Dates	January 20	May 11	August 24	Three shipments per year Five samples per shipment

Rubella Immunoserology (XU)

Item PT04260

1mL liquid samples.

ANALYTES	CLIA REGULATED		UNREGULATED	
		• Rubella, qualitative (IgG)		• Rubella, quantitative (IgG) *
2026 Ship Dates	January 20	May 11	August 24	Three shipments per year Five samples per shipment

* Analyte(s) not yet accepted by the CAP Laboratory Accreditation Program

Rubella IgM Immunoserology (XM)

Item PT04330

0.5mL lyophilized serum samples. For Quality Assurance only; does not meet CMS Rubella requirements.

ANALYTES	CLIA REGULATED		UNREGULATED	
				• Rubella, qualitative (IgM)
2026 Ship Dates	January 20	August 24		Two shipments per year Three samples per shipment

IMMUNOLOGY

Syphilis Serology (SS)

Item PT04270
QE Product Item PT04280

1mL liquid samples intended for the quantitative and qualitative evaluation of antibody to *Treponema pallidum*. Intended for methods that evaluate serum specimens (RPR, VDRL, FTA, MHA-TP, TP-PA, EIA/ CIA, multiplex flow immunoassay, and rapid kits).

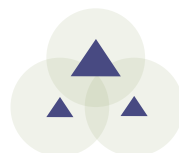
	CLIA REGULATED		UNREGULATED	
ANALYTES	<ul style="list-style-type: none"> • Syphilis Nontreponemal, qualitative • Syphilis Nontreponemal, quantitative • Syphilis Treponemal, qualitative 			
2026 Ship Dates	January 20	May 11	August 24	Three shipments per year Five samples per shipment

Syphilis Serology -Waived Methods (SSW)

Item PT04272
QE Product Item PT04273

1mL liquid serum samples intended for use with Syphilis Health Check (waived).

	CLIA REGULATED		UNREGULATED	
ANALYTES			<ul style="list-style-type: none"> • Syphilis Treponemal, qualitative 	
2026 Ship Dates	January 20	August 24	Two shipments per year Three samples per shipment	



MICROBIOLOGY

Microbiology CLIA requirements:

CLIA regulations require five regulated proficiency testing challenges, three times per year for each Microbiology sub-specialty:

- **Bacteriology:** Gram stain reaction and morphology, Direct bacterial antigen detection, Bacterial toxin detection, Detection of the presence/absence of bacteria without identification, Bacterial identification, Antimicrobial susceptibility require 2 samples per event.
- **Mycobacteriology:** Acid-fast stain, Detection of presence/absence of mycobacteria without identification, Mycobacteria identification. Mycobacteriology requires five challenges, two times per year.
- **Mycology:** Direct fungal antigen detection, Detection of presence/absence of fungi and aerobic actinomycetes without identification, Identification of fungi and aerobic actinomycetes.
- **Parasitology:** Direct parasite antigen detection, Detection of the presence/absence of parasites without identification, Parasite identification.
- **Virology:** Viral antigen detection, Detection and identification of viruses.

All non-waived tests in a sub-specialty can be combined to meet the five regulated challenges per event requirements.

Microbiology challenges tested by a waived method cannot be included with non-waived methods to meet the five challenges per event requirement.



MICROBIOLOGY

Multiplex Products:

We offer a variety of Multiplex products. Product descriptions and ordering information can be found on the pages listed to the right. Charts below and on the next page lists the organisms available in each product.

+ Meningitis Multiplex (MEP) is an Educational product.

Scores no longer sent to CMS. Labs must enroll in other regulated Bacteriology products to fulfill CLIA requirements.

Blood Pathogen Multiplex (BPM)	Page 38
GI Multiplex (EP)	Page 39
Meningitis Multiplex (MEP)	Page 41
Respiratory Multiplex (RP)	Page 48

Bacterial Identification	CLIA REGULATED			+
	BPM	EP	RP	
Acinetobacter species	X			
Aerococcus urinae				
Bacteroides fragilis	X			
Bordetella pertussis			X	
C. difficile, toxigenic		X		
Campylobacter species		X		
Chlamydia pneumoniae			X	
Citrobacter species	X			
Enterobacter species	X			
Enterococcus species	X			
Escherichia coli	X			
Escherichia coli (EAEC, EPEC, ETEC, EIEC, STEC, O157)		X		
Escherichia coli K1				X
Haemophilus influenzae	X			X
Klebsiella species	X			
Listeria species	X			X
Mycoplasma species			X	
Neisseria meningitidis	X			X
Plesiomonas shigelloides		X		
Proteus species	X			
Pseudomonas aeruginosa	X			
Salmonella species	X	X		
Serratia marcescens	X			
Staphylococcus species	X			
Stenotrophomonas maltophilia	X			
Streptococcus species	X			X
Vibrio species		X		
Yersinia enterocolitica		X		

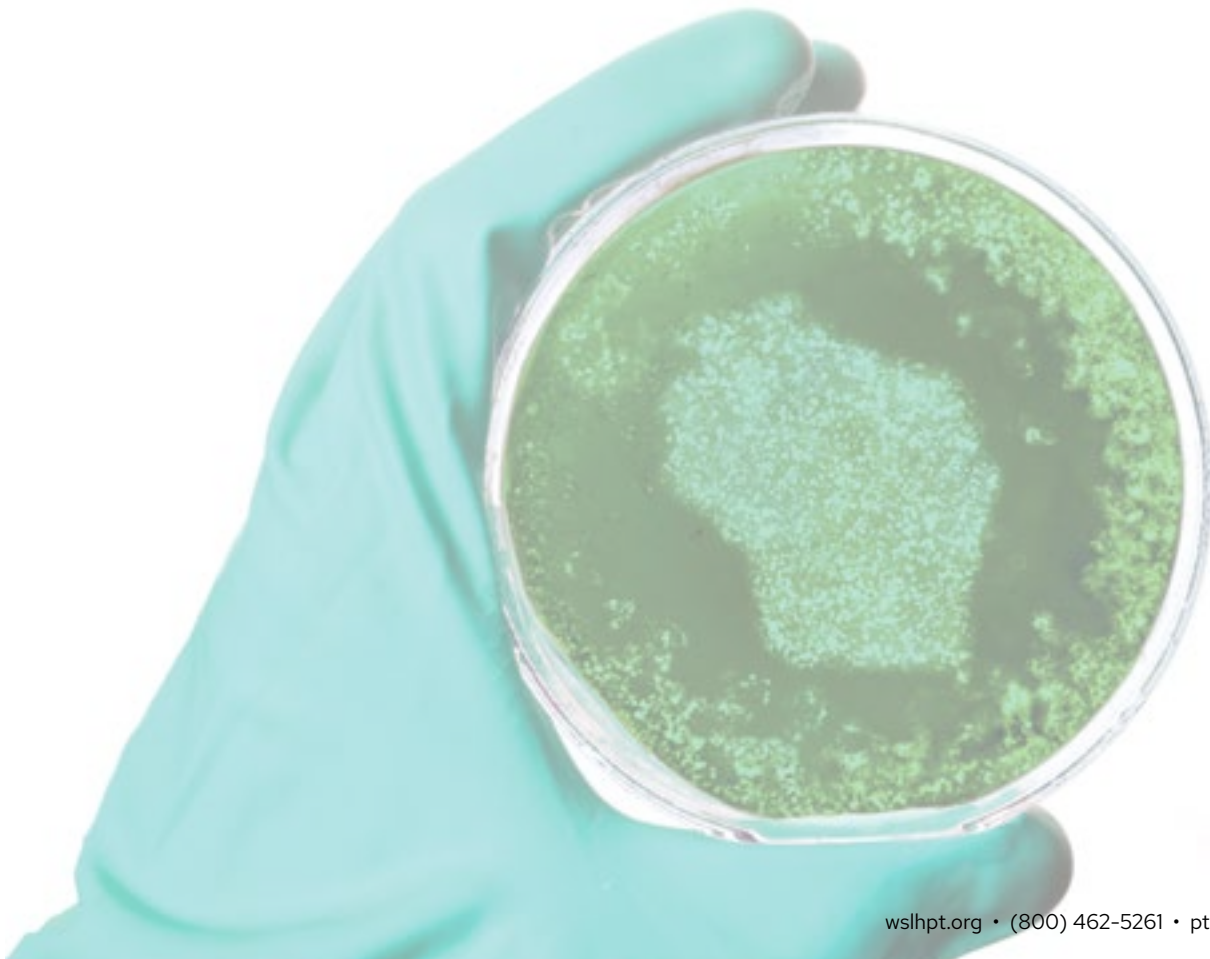
Fungal Identification	CLIA REGULATED			+
	BPM	EP	RP	
Candida species	X			
Cryptococcus neoformans/gattii	X			X

Parasite Identification	CLIA REGULATED			+
	BPM	EP	RP	
Cryptosporidium		X		
Cyclospora cayetanensis		X		
Entamoeba histolytica		X		
Giardia lamblia		X		

MICROBIOLOGY

Viral Identification	CLIA REGULATED			+
	BPM	EP	RP	
Adenovirus			X	
Adenovirus F 40/41		X		
Astrovirus		X		
Coronavirus			X	
Cytomegalovirus (CMV)				X
Enterovirus				X
Herpes simplex virus 1 (HSV-1)				X
Herpes simplex virus 2 (HSV-2)				X
Human herpesvirus 6 (HHV-6)				X
Human metapneumovirus			X	
Human parechovirus				X
Influenza (A/B)			X	
Norovirus GI/GII		X		
Parainfluenza			X	
Respiratory syncytial virus (RSV)			X	
Rhinovirus/Enterovirus			X	
Rotavirus A		X		
Sapovirus		X		
SARS-CoV-2			X	
Varicella zoster virus (VZV)				X

Resistance Gene	UNREGULATED				+
	BPM	EP	RP	MEP	
CTX-M	X				
IMP	X				
KPC	X				
mcr-1	X				
mecA/C and MREJ (MRSA)	X				
NDM	X				
OXA	X				
van A/B	X				
VIM	X				



MICROBIOLOGY

▲ Bacteriology

Bacteriology - Limited (MBC)

Bacteriology - Comprehensive (MBC)

Procedures, sources, and number of challenges per year listed below. All samples compatible with culture or molecular methods unless noted. Gram stain performed on sample growth.

	CLIA REGULATED	UNREGULATED
PROCEDURES (NUMBER/YEAR)	<ul style="list-style-type: none"> • Anaerobic bacteria culture (1) • Antimicrobial susceptibility (6) -Source-urine • C. difficile antigen, toxin and/or molecular (3) • Enteric pathogen identification (1) • Gram stain reaction/morphology (6) • Group A Strep antigen detection (3) • Group B Strep culture/molecular (3) -Source-vaginal • Methicillin-resistant Staph aureus (3) • Miscellaneous culture (1) -Source-alternating (CSF, eye, synovial, respiratory, wound) • N. gonorrhoeae culture (3) -Sources-throat, urethral, vaginal • Strep identification culture/molecular (3) • Urine culture (6) -Detection and/or identification • Vancomycin-resistant Enterococcus (3) <p><u>Included in Module 5038 only</u></p> <ul style="list-style-type: none"> • Blood culture (6) -Detection and/or identification • Gram stain reaction/morphology (6) 	<ul style="list-style-type: none"> • Colony count (urine culture) *
2026 Ship Dates	February 9 June 8	September 21
		Three shipments per year Eight samples per shipment-5036 Ten samples per shipment-5038

Limited Item PT05036 Comprehensive Item PT05038

Module 5036 includes samples listed, excluding blood culture samples.

Module 5038 includes all samples listed.

Group A Strep antigen samples are not compatible with molecular methods.

See ST product on page 43 or WS product on page 40.

ENHANCED

* Analyte(s) not yet accepted by the CAP Laboratory Accreditation Program

MICRO-BACTERIOLOGY

Bacteriology - Blood Culture (MBC)

2 Sample Blood Culture Item PT05039

Samples for blood culture (detection and/or identification) and Gram stain from sample growth.

Item PT05039 only meets CLIA requirements if ordered with another regulated Bacteriology product.

NEW!

PROCEDURES (NUMBER/YEAR)	CLIA REGULATED		UNREGULATED	
		• Blood culture (6) -Detection and/or identification		
	• Gram stain reaction/morphology (6)			
2026 Ship Dates	February 9	June 8	September 21	Three shipments per year Two samples per shipment

Bacterial Vaginosis Detection - Waived Methods (BV)

Item PT05005

Samples for the detection of bacterial vaginosis intended for use with the OSOM BVBLUE Test kit.

PROCEDURES	CLIA REGULATED		UNREGULATED	
				• Bacterial vaginosis detection
2026 Ship Dates	February 9	September 21		Two shipments per year Three samples per shipment

Bioterrorism Preparedness Exercise (BPE)

Item PT06010

This is an educational exercise intended to document QA/competency for biological emergency response situations. It provides surrogate organisms with characteristics that mimic potentially lethal pathogens. Scores are not transmitted to accreditation agencies.

Contact WSLH PT for more information.

State coordinators can arrange to enroll and fund their response network (sentinel) laboratories. They will receive copies of all reports for use in assessment and documentation of capacity, readiness, and training needs.

2026 Ship Dates	March 9	October 5	Two shipments per year Two samples per shipment
------------------------	---------	-----------	--

MICROBIOLOGY

▲ Bacteriology

Blood Pathogen Multiplex (BPM)

Item PT05480

Blood pathogen multiplex panel for molecular platforms. For identification of bacterial (aerobic and anaerobic) pathogens, fungal pathogens and resistance genes present in simulated positive blood culture.

Targets available for reporting are listed on pages 34 and 35. Not all platforms will detect all targets listed.

	CLIA REGULATED		UNREGULATED	
PROCEDURES	<ul style="list-style-type: none"> Bacterial identification Fungal identification 		<ul style="list-style-type: none"> Resistance genes (Appropriate for bacterial target selected) 	
2026 Ship Dates	February 9	June 8	September 21	Three shipments per year Five samples per shipment

Bordetella by Molecular Methods (BOR)

Item PT05054

Intended for identification of *B. pertussis*, *B. parapertussis*, and/or *B. holmesii* by molecular methods.

	CLIA REGULATED		UNREGULATED	
PROCEDURES	<ul style="list-style-type: none"> Bordetella species identification 			
2026 Ship Dates	February 9	June 8	September 21	Three shipments per year Five samples per shipment

Carbapenem Resistance Detection (CR)

Item PT05330
QE Product Item PT05335

Samples for detection of Carbapenem-resistant organisms (CRO). Intended for molecular methods, including the Cepheid GeneXpert Carba-R.

	CLIA REGULATED		UNREGULATED	
PROCEDURES			<ul style="list-style-type: none"> IMP detection KPC detection NDM-1 detection 	<ul style="list-style-type: none"> OXA-48 detection VIM detection
2026 Ship Dates	March 23	October 19		Two shipments per year Five samples per shipment

C. difficile (CD)

Item PT05060
QE Product Item PT05065

Compatible with rapid antigen or toxin detection methods as well as molecular methods.

	CLIA REGULATED		UNREGULATED	
PROCEDURES	<ul style="list-style-type: none"> C. difficile antigen detection C. difficile molecular C. difficile toxin detection 			
2026 Ship Dates	February 9	June 8	September 21	Three shipments per year Five samples per shipment

CT/GC/TV Detection (AC)

Item PT05070

Samples containing human DNA. Intended for molecular methods.

	CLIA REGULATED		UNREGULATED	
PROCEDURES	<ul style="list-style-type: none"> • Chlamydia trachomatis identification • Neisseria gonorrhoeae identification • Trichomonas identification 			
2026 Ship Dates	February 9	June 8	September 21	Three shipments per year Five samples per shipment

Enteric Pathogens (NP)

Item PT05080

Each organism is presented at least once per year. Compatible with culture, molecular methods and rapid Campylobacter identification methods.

NOT compatible with Shiga Toxin testing methods, see SHG product on page 42.

	CLIA REGULATED		UNREGULATED	
PROCEDURES	<ul style="list-style-type: none"> • Aeromonas • Campylobacter • E. coli O157:H7 • Plesiomonas 	<ul style="list-style-type: none"> • Salmonella • Shigella • Vibrio • Yersinia 		
2026 Ship Dates	February 9	June 8	September 21	Three shipments per year Five samples per shipment

GI Multiplex (EP)

Samples intended for gastrointestinal multiplex assays.

Item PT05380

3 Sample Add-on Item PT05381

Targets available for reporting are listed on pages 34 and 35. Not all platforms will detect all targets listed.

	CLIA REGULATED		UNREGULATED	
PROCEDURES	<ul style="list-style-type: none"> • Bacterial identification • Parasite identification • Viral identification 			
2026 Ship Dates	February 9	June 8	September 21	Three shipments per year Five samples per shipment

MICROBIOLOGY

▲ Bacteriology

Gram Stain (GS)

Unfixed slides for Gram staining.

Item PT05090
QE Product Item PT05100

	CLIA REGULATED		UNREGULATED	
PROCEDURES	• Gram stain reaction/morphology			
2026 Ship Dates	February 9	June 8	September 21	Three shipments per year Five samples per shipment

Group A Strep Antigen (Rapid Strep) (SA)

Samples for Group A Streptococci antigen detection (rapid strep).

Item PT05110
QE Product Item PT05120

Group A Strep antigen samples are not compatible with molecular methods. See ST product on page 43 or WS product below.

	CLIA REGULATED		UNREGULATED	
PROCEDURES	• Group A Strep antigen detection			
2026 Ship Dates	February 9	June 8	September 21	Three shipments per year Five samples per shipment

Group A Strep - Waived Methods (WS)

Intended for waived antigen or waived molecular methods only.

Item PT05130
QE Product Item PT05155

WS product also available in POC Package, see page 55.

	CLIA REGULATED		UNREGULATED	
PROCEDURES	• Group A Strep detection			
2026 Ship Dates	April 6	October 12		Two shipments per year Three samples per shipment

Group B Strep (SB)

Samples for identification of Group B Streptococci by culture or molecular methods.

Item PT05180
QE Product Item PT05185

	CLIA REGULATED		UNREGULATED	
PROCEDURES	• Group B Strep Identification			
2026 Ship Dates	February 9	June 8	September 21	Three shipments per year Five samples per shipment

Helicobacter pylori Antigen, Stool (HPSA)

0.5mL liquid samples intended for the qualitative evaluation of Helicobacter pylori antigen in stool specimens.

	CLIA REGULATED		UNREGULATED	
PROCEDURES	• Helicobacter pylori antigen detection			
2026 Ship Dates	February 9	June 8	September 21	Three shipments per year Two samples per shipment

2 sample Add-on Item PT05401
QE Product Item PT05403

For non-waived methods, Item PT05401 only meets CLIA requirements if ordered with another regulated Bacteriology product.

For serum Helicobacter pylori, see HL product on page 28.

Helicobacter pylori - Rapid Urease (RUR)

Simulated gastric biopsy samples on paper disks. Intended for use with CLOtest, PyloriTek, or similar methods.

	CLIA REGULATED		UNREGULATED	
ANALYTES	• Urease *			
2026 Ship Dates	February 9	September 21		Two shipments per year Three samples per shipment

Item PT05500

For serum Helicobacter pylori, see HL product on page 28.

* Analyte(s) not yet accepted by the CAP Laboratory Accreditation Program

Legionella Antigen (LGA)

Samples for Legionella Antigen detection methods in urine.

	CLIA REGULATED		UNREGULATED	
ANALYTES	• Legionella antigen			
2026 Ship Dates	February 9	June 8	September 21	Three shipments per year Two samples per shipment

2 Sample Add-on Item PT05440
QE Product Item PT05441

Item PT05440 only meets CLIA requirements if ordered with another regulated Bacteriology product.

Meningitis Multiplex (MEP)

Samples intended for meningitis multiplex assays.

	EDUCATIONAL			
ANALYTES	• Bacterial identification+			
	• Fungal identification+			
	• Viral identification+			
2026 Ship Dates	February 9	June 8	September 21	Three shipments per year Two samples per shipment

2 Sample Add-on Item PT05451

Targets available for reporting are listed on pages 34 and 35. Not all platforms will detect all targets listed.

+EDUCATIONAL: Scores no longer sent to CMS. Labs must enroll in other regulated Bacteriology products to fulfill CLIA requirements.

MICROBIOLOGY

▲ Bacteriology

MRSA (MR)

Compatible with culture and molecular methods.

Item PT05200
QE Product Item PT05210

	CLIA REGULATED		UNREGULATED	
PROCEDURES	• Staphylococcus aureus • Methicillin-resistant S. aureus			
2026 Ship Dates	February 9	June 8	September 21	Three shipments per year Five samples per shipment

Mycoplasma genitalium Molecular (MG)

Samples for molecular identification of Mycoplasma genitalium.

2 Sample Add-on Item PT05461

Item PT05461 only meets CLIA requirements if ordered with another regulated Bacteriology product.

	CLIA REGULATED		UNREGULATED	
PROCEDURES	• M. genitalium identification			
2026 Ship Dates	February 9	June 8	September 21	Three shipments per year Two samples per shipment

S. pneumoniae Antigen (BA)

Samples for rapid antigen detection. Compatible with BinaxNOW Streptococcus pneumoniae antigen card and other antigen detection methods (Urine/CSF).

Item PT05000

	CLIA REGULATED		UNREGULATED	
PROCEDURES	• Streptococcus pneumoniae antigen detection			
2026 Ship Dates	February 9	June 8	September 21	Three shipments per year Five samples per shipment

Shiga Toxin (SHG)

Samples for Shiga toxin 1 and/or 2 and undifferentiated detection methods. Compatible with rapid antigen detection and molecular methods.

2 Sample Add-on Item PT05241
QE Product Item PT05242

Item PT05241 only meets CLIA requirements if ordered with another regulated Bacteriology product.

	CLIA REGULATED		UNREGULATED	
PROCEDURES	• Shiga toxin 1 detection • Shiga toxin 2 detection • Shiga toxin undifferentiated			
2026 Ship Dates	February 9	June 8	September 21	Three shipments per year Two samples per shipment

Strep Identification (ST)

Item PT05170

Samples for identification of Group A or Group C/G Strep, Compatible with culture and molecular methods.

ENHANCED

	CLIA REGULATED		UNREGULATED	
PROCEDURES	• Strep identification			
2026 Ship Dates	February 9	June 8	September 21	Three shipments per year Five samples per shipment

Throat/Urine Bacteriology (TU)

Item PT05250

Samples for urine culture, Group A and/or C/G Strep culture/molecular, and Group A Streptococci antigen detection (rapid strep).

Group A Strep antigen samples are not compatible with molecular methods. See ST product above or WS product on page 40.

	CLIA REGULATED		UNREGULATED	
PROCEDURES (NUMBER/ SHIPMENT)	<ul style="list-style-type: none"> • Antimicrobial susceptibility (2) • Gram stain reaction/morphology (1) • Group A Strep antigen detection (2) • Strep identification (2) • Urine culture (3) -Detection and/or identification 		<ul style="list-style-type: none"> • Colony count (urine culture) * 	
2026 Ship Dates	February 9	June 8	September 21	Three shipments per year Seven samples per shipment

* Analyte(s) not yet accepted by the CAP Laboratory Accreditation Program

Throat/Urine Bacteriology - Limited (TU)

Item PT05260

Samples for urine culture and Group A and/or C/G Strep culture/molecular.

	CLIA REGULATED		UNREGULATED	
PROCEDURES (NUMBER/ SHIPMENT)	<ul style="list-style-type: none"> • Antimicrobial susceptibility (2) • Gram stain reaction/morphology (1) • Strep identification (2) • Urine culture (3) -Detection and/or identification 		<ul style="list-style-type: none"> • Colony count (urine culture) * 	
2026 Ship Dates	February 9	June 8	September 21	Three shipments per year Five samples per shipment

* Analyte(s) not yet accepted by the CAP Laboratory Accreditation Program

MICROBIOLOGY

▲ Bacteriology

Urine Culture (UC)

Item PT05270

Samples for urine culture.

	CLIA REGULATED		UNREGULATED	
PROCEDURES (NUMBER/ SHIPMENT)	<ul style="list-style-type: none"> • Antimicrobial susceptibility (2) • Gram stain reaction/morphology (1) • Urine culture (5) -Detection and/or identification 		<ul style="list-style-type: none"> • Colony count (urine culture) * 	
2026 Ship Dates	February 9	June 8	September 21	Three shipments per year Five samples per shipment

* Analyte(s) not yet accepted by the CAP Laboratory Accreditation Program

Vaginal Pathogens (VP)

Item PT05280

QE Product Item PT05290

Intended for use with the BD Affirm VP111.

	CLIA REGULATED		UNREGULATED	
PROCEDURES	<ul style="list-style-type: none"> • Candida identification • Gardnerella identification • Trichomonas identification 			
2026 Ship Dates	February 9	June 8	September 21	Three shipments per year Five samples per shipment

VP Molecular (VPM)

Item PT05470

Samples for identification of vaginal pathogens via molecular methods. Compatible with most molecular platforms including BD MAX and Cepheid GeneXpert Xpress Vaginal Panels.

	CLIA REGULATED		UNREGULATED	
PROCEDURES	<ul style="list-style-type: none"> • Candida identification • Trichomonas identification 		<ul style="list-style-type: none"> • Bacterial vaginosis detection 	
2026 Ship Dates	February 9	June 8	September 21	Three shipments per year Five samples per shipment

Acid-Fast Stain (MA)

Intended for reporting the presence or absence of acid-fast bacilli.

Item PT06000
Add-on to MB (below) Item PT06005

	CLIA REGULATED	UNREGULATED
PROCEDURES	• Acid-fast stain	
2026 Ship Dates	March 9 September 14	Two shipments per year Five samples per shipment

Mycobacteriology Culture (MB)

Intended for Mycobacterium species culture.

Item PT06060

	CLIA REGULATED	UNREGULATED
PROCEDURES	• Mycobacteria culture	
2026 Ship Dates	January 26 August 3	Two shipments per year Five samples per shipment

M. tuberculosis by Molecular Methods (TB)

Intended for Mycobacterium tuberculosis detection by molecular methods. Includes detection of Rifampin resistance.

Item PT06050
QE Product Item PT06055

	CLIA REGULATED	UNREGULATED
PROCEDURES	• M. tuberculosis detection	• Rifampin resistance screen
2026 Ship Dates	March 9 September 14	Two shipments per year Five samples per shipment



MICROBIOLOGY

▲ Mycology

KOH Slides (KOH)

Item PT06230

Slides for KOH/calcofluor white preparations. Samples for detection of yeast and fungal elements on skin.

	CLIA REGULATED	UNREGULATED	
PROCEDURES		• KOH Preparation	
2026 Ship Dates	February 9	September 21	Two shipments per year Three samples per shipment

Mycology - Comprehensive (MY)

Item PT06070

Samples for comprehensive fungal identification including yeast, dermatophytes, and aerobic actinomycete identification.

	CLIA REGULATED	UNREGULATED		
PROCEDURES	• Aerobic Actinomycetes identification • Mold, yeast, and yeast-like organism identification			
2026 Ship Dates	January 5	May 4	August 17	Three shipments per year Five samples per shipment

Mycology - Dermatophyte (DM)

Item PT06090

Designed for laboratories or dermatology offices reporting the presence or absence of dermatophytes. Compatible with Dermatophyte Test Medium [DTM] or non-specialized and non-differential mycology media.

	CLIA REGULATED	UNREGULATED		
PROCEDURES	• Dermatophyte screen (Qualitative)			
2026 Ship Dates	January 5	May 4	August 17	Three shipments per year Five samples per shipment

Mycology - Yeast (YE)

Item PT06100

Samples for yeast identification. Not intended for wet mount preparations.

	CLIA REGULATED	UNREGULATED		
PROCEDURES	• Yeast and yeast-like organism identification			
2026 Ship Dates	January 5	May 4	August 17	Three shipments per year Five samples per shipment

Blood Parasites (PAB)

Item PT06020

Samples include slides with giemsa-stained thick and thin blood smears and/or photomicrographs.

	CLIA REGULATED		UNREGULATED	
PROCEDURES	• Blood parasite identification			
2026 Ship Dates	February 9	June 8	September 21	Three shipments per year Five samples per shipment

Giardia/Cryptosporidium Antigen Detection (GI)

Item PT06030

Intended for laboratories performing Giardia/Cryptosporidium screening on stool samples.

	CLIA REGULATED		UNREGULATED	
PROCEDURES	• Giardia/Cryptosporidium antigen detection			
2026 Ship Dates	February 9	June 8	September 21	Three shipments per year Five samples per shipment

Parasitology - Comprehensive (PA)

Item PT06110

Sample types include: formalin-preserved stool suspension for wet mount and/or modified acid-fast stain, stool suspension for Giardia/ Cryptosporidium antigen detection, zinc-PVA stool smears, blood parasite smears/photomicrographs.

	CLIA REGULATED		UNREGULATED	
PROCEDURES	<ul style="list-style-type: none"> • Blood parasite identification • Giardia/Cryptosporidium antigen detection • Stool parasite identification 			
2026 Ship Dates	February 9	June 8	September 21	Three shipments per year Six samples per shipment

Trichomonas - Waived Methods (TV)

Item PT05310
QE Product Item PT05315

Samples for detection of Trichomonas intended for use with OSOM Trichomonas Rapid Test.

	CLIA REGULATED		UNREGULATED	
PROCEDURES	• Trichomonas detection			
2026 Ship Dates	February 9	September 21		Two shipments per year Three samples per shipment

MICROBIOLOGY

▲ Virology

HSV Molecular (HSV)

Item PT06220

1mL liquid samples intended for molecular detection of Herpes simplex virus (HSV) 1 & 2.

	CLIA REGULATED		UNREGULATED	
ANALYTES	• HSV 1	• HSV 2		
2026 Ship Dates	February 9	June 8	September 21	Three shipments per year Five samples per shipment

Rabies (RA)

Dual impressions on Teflon-coated slides.

DFA Method Item PT06130
QE Product DFA Method Item PT06137
dRIT Method Item PT06140
QE Product dRIT Method Item PT06147

	CLIA REGULATED		UNREGULATED	
ANALYTES			• Rabies Antigen	
2026 Ship Dates	April 13	October 5		Two shipments per year Five samples per shipment

Respiratory Multiplex (RP)

Lyophilized samples intended for molecular respiratory multiplex assays.

Item PT06240
3 sample Add-on Item PT06241
QE Product Item PTO6244

	CLIA REGULATED		UNREGULATED	
ANALYTES	• Bacterial identification • Viral identification			
2026 Ship Dates	February 9	June 8	September 21	Three shipments per year Five samples per shipment

For methods that detect SARS/Influenza or SARS/Influenza/RSV, see CM product on page 49 and CMW product on page 50.

Targets available for reporting are listed on pages 34 and 35. Not all platforms will detect all targets listed.

SARS-CoV-2 Antigen (CV)

Swabs intended for antigen tests targeting the SARS-CoV-2 nucleoprotein.

Item PT06288
QE Product Item PT06289

	CLIA REGULATED		UNREGULATED	
ANALYTES	• SARS-CoV-2			
2026 Ship Dates	February 9	June 8	September 21	Three shipments per year Five samples per shipment

SARS-CoV-2 Antigen - Waived Methods (CVW)

Swabs intended for waived antigen tests targeting the SARS-CoV-2 nucleoprotein.

Item PT06290
QE Product Item PT06295

	CLIA REGULATED		UNREGULATED	
ANALYTES			• SARS-CoV-2	
2026 Ship Dates	February 9	September 21		Two shipments per year Three samples per shipment

SARS-CoV-2/Flu Antigen Combo - Waived (CFW)

Swab samples intended for waived antigen Combo assays targeting SARS-CoV-2 and Influenza A/B simultaneously.

Item PT06292
QE Product Item PT06293

NEW!

	CLIA REGULATED		UNREGULATED	
ANALYTES			• Influenza A • Influenza B	• SARS-CoV-2
2026 Ship Dates	February 9	September 21		Two shipments per year Three samples per shipment

SARS-CoV-2 Molecular Liquid (CLM)

1mL liquid samples for molecular detection of SARS-CoV-2 (whole genome). Intended for analyzer assays such as BD, Hologic, and Roche.

Item PT06300
QE Product Item PT06305

	CLIA REGULATED		UNREGULATED	
ANALYTES	• SARS-CoV-2			
2026 Ship Dates	February 9	June 8	September 21	Three shipments per year Five samples per shipment

SARS/Viral Molecular (CM)

Swabs with elution liquid intended for molecular detection of SARS-CoV-2 (whole genome), Influenza, and RSV. Can be used for multi-analyte SARS/Viral methods or single SARS methods.

Item PT06270
QE Product Item PT06275

Contact WSLH PT for ordering instruction if additional swabs are needed for processing of separate test cartridges.

Hologic Aptima users order CLM product above.

	CLIA REGULATED		UNREGULATED	
ANALYTES	• Influenza A • Influenza B	• RSV • SARS-CoV-2		
2026 Ship Dates	February 9	June 8	September 21	Three shipments per year Five samples per shipment

MICROBIOLOGY

▲ Virology

Abbott ID NOW (waived) users: please use the following table to order your Viral PT

	PT06170	PT06280	
SARS CoV-2 Only		X	
SARS CoV-2 + Influenza (separate assays)	X	X	must order both
SARS CoV-2 + Influenza using Sequential workflow		X	
RSV	X		
Influenza + RSV	X		
SARS CoV-2, Influenza, and RSV	X	X	must order both

SARS/Viral Molecular - Waived Methods (CMW)

Swabs with elution liquid intended for molecular detection of waived SARS-CoV-2 (whole genome), Influenza, and RSV methods. Can be used for waived multi-analyte SARS/Viral or single SARS methods.

	CLIA REGULATED		UNREGULATED	
ANALYTES			<ul style="list-style-type: none"> Influenza A Influenza B 	<ul style="list-style-type: none"> RSV SARS-CoV-2
2026 Ship Dates	February 9	September 21	Two shipments per year Three samples per shipment	

Item PT06280
QE Product Item PT06285

Contact WSLH PT for ordering instruction if additional swabs are needed for processing of separate test cartridges.

Hologic Aptima users order CLM product on page 49.

Abbott ID NOW users see table above.

Viral - Waived Methods (VCW)

1mL liquid samples for waived rapid antigen test kits or molecular methods.

	CLIA REGULATED		UNREGULATED	
ANALYTES			<ul style="list-style-type: none"> Adenovirus * Influenza A 	<ul style="list-style-type: none"> Influenza B RSV
2026 Ship Dates	February 9	September 21	Two shipments per year Three samples per shipment	

Item PT06170
QE Product Item PT06195

Abbott ID NOW users see table above.

* Analyte(s) not yet accepted by the CAP Laboratory Accreditation Program

MICRO-VIROLOGY

Viral - Limited (VA)

Item PT06150
QE Product Item PT06160

1mL liquid samples for rapid antigen test kits or molecular methods.

	CLIA REGULATED		UNREGULATED	
ANALYTES	• Adenovirus • Influenza A	• Influenza B • RSV		
2026 Ship Dates	February 9	June 8	September 21	Three shipments per year Five samples per shipment

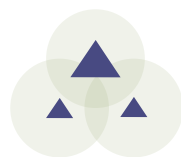
Viral with Rotavirus (VA)

Item PT06200
QE Product Item PT06210

1mL liquid samples for rapid antigen test kits or molecular methods.

	CLIA REGULATED		UNREGULATED	
ANALYTES	• Adenovirus • Influenza A • Influenza B	• RSV • Rotavirus		
2026 Ship Dates	February 9	June 8	September 21	Three shipments per year Five samples per shipment

Customers not testing Rotavirus,
choose Limited product above.



URINALYSIS/MICROSCOPY/MISC

Amniotic Fluid Detection (AE)

Item PT03000

1mL liquid samples for detecting the presence/absence of fluid from ruptured fetal membranes. Intended for use with the Actim PROM, AmniSure ROM, Clinical Innovations ROM Plus, and PartoSure.

For Amniotic pH and pH ruptured interpretation, see PH product on page 12.

	CLIA REGULATED	UNREGULATED
ANALYTES		<ul style="list-style-type: none"> Rupture of fetal membranes
2026 Ship Dates	May 26 October 19	Two shipments per year Two samples per shipment

Body Fluid Cell Count (BFA & BFM)

Automated cell count (BFA) Item PT03030
Manual cell count (BFM) Item PT03040
QE Product BFA Item PT03037

Clear, protein-based, liquid samples intended for labs performing body fluid cell counts by automated or manual methods. These samples are NOT compatible with the IRIS IQ200.

	CLIA REGULATED	UNREGULATED
ANALYTES		<ul style="list-style-type: none"> RBC Total nucleated count/WBC
2026 Ship Dates	April 6 October 12	Two shipments per year Three samples per shipment

Body Fluid Microscopy (BF)

Item PT03050

Three images (paper and online versions) that include crystal(s) and/or cell identification(s) found in miscellaneous fluids (e.g., synovial, spinal, pleural). A synovial fluid crystal identification will be provided in one of the three images per event.

	CLIA REGULATED	UNREGULATED
ANALYTES		<ul style="list-style-type: none"> Cell identification Crystal identification
2026 Ship Dates	April 6 October 12	Two shipments per year Three samples per shipment

Fecal Lactoferrin (LF)

Item PT03060

0.5mL liquid samples compatible with the LACTOFERRIN CHEK, LACTOFERRIN EZ VUE, and LEUKO EZ VUE methods.

	CLIA REGULATED	UNREGULATED
ANALYTES		<ul style="list-style-type: none"> Lactoferrin
2026 Ship Dates	April 6 October 12	Two shipments per year Three samples per shipment

URINALYSIS/MICROSCOPY/MISC

Fecal Occult Blood (OC)

Simulated fecal samples compatible with FOB (slide), iFOB, and automated systems.

Item PT03071
QE Product Item PT03074

OC product also available in POC
Package, see page 55.

	CLIA REGULATED	UNREGULATED
ANALYTES		<ul style="list-style-type: none"> • Occult blood, fecal
2026 Ship Dates	April 6	October 12
		Two shipments per year Two samples per shipment

Fetal Fibronectin (FFN)

1mL liquid simulated cervicovaginal samples.

Item PT03100

	CLIA REGULATED	UNREGULATED
ANALYTES		<ul style="list-style-type: none"> • Fetal fibronectin
2026 Ship Dates	May 26	October 19
		Two shipments per year Three samples per shipment

Gastric Occult Blood (GO)

Liquid samples intended for Beckman Coulter Gastrocuccult slides and HemaPrompt FG slides.

Item PT03110
QE Product Item PT03135

	CLIA REGULATED	UNREGULATED
ANALYTES		<ul style="list-style-type: none"> • Occult blood, gastric
2026 Ship Dates	April 6	October 12
		Two shipments per year Three samples per shipment

Provider Performed Microscopy (PM)

Two images (paper and online versions) for each of the procedures listed below.

Item PT03170
QE Product Item PT03195

PM product also available in POC
Package, see page 55.

If only performing Urine Sediment
Identification, see SU product on
page 54.

Online PPM Competency is also
available on page 60.

	CLIA REGULATED	UNREGULATED
ANALYTES		<ul style="list-style-type: none"> • Fecal smear for leukocytes • Fern test • KOH preparation, skin • KOH preparation, vaginal • Nasal smear for eosinophils • Pinworm preparation • Urine sediment • Vaginal wet preparation
2026 Ship Dates	April 6	October 12
		Two shipments per year Two challenges per procedure

URINALYSIS/MICROSCOPY/MISC

Urinalysis and Urine hCG (UR)

10 mL liquid samples for urinalysis and urine pregnancy.

ANALYTES	CLIA REGULATED	UNREGULATED

2026 Ship Dates	April 6	October 12	Two shipments per year Three samples per shipment
------------------------	---------	------------	--

Item PT03260
QE Product Item PT03285

If only performing Urine hCG, see UH product below.

For serum hCG see CET and HCG products on page 14.

UR product also available in POC Package, see page 55.

Urine hCG (UH)

1 mL liquid samples for urine pregnancy.

ANALYTES	CLIA REGULATED	UNREGULATED

2026 Ship Dates	April 6	October 12	Two shipments per year Three samples per shipment
------------------------	---------	------------	--

Item PT03291
QE Product Item PT03292

If performing Urinalysis and Urine hCG, see UR product above.

For serum hCG see CET and HCG products on page 14.

NEW!

Urine Sediment Identification (SU)

Two images (paper and online versions) for the identification of urine sediment components.

ANALYTES	CLIA REGULATED	UNREGULATED

2026 Ship Dates	April 6	October 12	Two shipments per year Two challenges per shipment
------------------------	---------	------------	---

Item PT03320
QE Product Item PT03345

URINE/MICROSCOPY/MISC

URINALYSIS/MICROSCOPY/MISC

Create Your Own Point of Care Package

You can create your own point of care package by choosing combinations of a variety of items.

Point of Care Package

The Point of Care Package includes a choice of 2 to 4 items for one package price.

To create your package:

- Order Item PT03400 and choose up to 4 items from the POC Product list below.
- Fifth item may be added on for additional charge. (Order PT03401 with PT03400)

Item PT03400

If ordering only one item see individual product listings.

For complete product descriptions refer to pages listed below.

- OC - page 53
- WBG - page 15
- WS - page 40
- PM - page 53
- UR - page 54

POC PRODUCTS FOR ITEM PT03400	POC ITEM #
• Fecal Occult Blood (OC) - 2 samples	PT03073
• Glucose Whole Blood (WBG) - 2 samples	PT01883
• Group A Strep - Waived Methods (WS) - 3 samples	PT05135
• Provider Performed Microscopy (PM) - 2 photos of each procedure	PT03175
• Urinalysis and Urine hCG (UR) - 3 samples	PT03265

Add-on Products to Point of Care Package

For more choices, the items listed below can be added on to the Point of Care Package.

ADD ON PRODUCTS TO PT03400	ADD-ON ITEM #
• Hemoglobin - Waived Methods (HWG) - 3 samples	PT01451
• Hemoglobin - HemoCue Hb 301 and Hb 801 - Waived (HWH) - 3 samples	PT01456
• Mono Immunoserology - Waived Methods (MW) - 3 samples	PT04222

For complete product descriptions refer to pages listed below.

- HWG - page 26
- HWH - page 26
- MW - page 30

Quality Evaluation (QE) Products

Need Quality Evaluation (QE) products? These products can be ordered in conjunction with any of the above corresponding Primary products and may be ordered in multiples.

QUALITY EVALUATION (QE) PRODUCTS	QE ITEM #
• Fecal Occult Blood (OC) - 2 samples	PT03074
• Glucose Whole Blood (WBG) - 3 samples	PT01895
• Group A Strep - Waived Methods (WS) - 3 samples	PT05155
• Hemoglobin - Waived Methods (HWG) - 3 samples	PT01475
• Hemoglobin - HemoCue Hb 301 and Hb 801 - Waived (HWH) - 3 samples	PT01465
• Provider Performed Microscopy (PM) - 2 photos of each procedure	PT03195
• Urinalysis and Urine hCG (UR) - 3 samples	PT03285

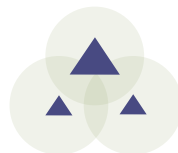
For complete product descriptions refer to pages listed below.

- OC - page 53
- WBG - page 15
- WS - page 40
- HWG - page 26
- HWH - page 26
- PM - page 53
- UR - page 54

2026 Ship Dates April 6

October 12

Two shipments per year
Two/Three challenges per shipment



ANDROLOGY

Post-Vasectomy Semen Analysis (PV)

Item PT03140

1mL stabilized liquid sperm samples for post-vasectomy presence/absence screening and sperm count. Samples designed for manual methods.

	CLIA REGULATED		UNREGULATED
ANALYTES			• Sperm count, qualitative
2026 Ship Dates	May 26	October 19	Two shipments per year Two samples per shipment

Post-Vasectomy with Motility (PVM)

Item PT03145

Web-base videos of two post-vasectomy semen samples for the presence/absence of sperm and presence/absence of motility.

	CLIA REGULATED		UNREGULATED
ANALYTES			• Sperm count, qualitative * • Sperm motility, qualitative
2026 Ship Dates	May 26	October 19	Two shipments per year Two samples per shipment

* Analyte(s) not yet accepted by the CAP Laboratory Accreditation Program

Sperm Count (SP)

Item PT03200

1mL stabilized liquid sperm samples. Samples designed for manual methods.

	CLIA REGULATED		UNREGULATED
ANALYTES			• Sperm count, quantitative
2026 Ship Dates	May 26	October 19	Two shipments per year Two samples per shipment

Sperm Morphology (SM & SMS)

Unstained slide (SM) Item PT03210
Pre-stained slide (SMS) Item PT03220

Slide and image for percent normal and morphology assessment. Pre-stained slide is stained with modified Papanicolaou.

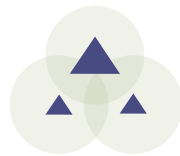
	CLIA REGULATED		UNREGULATED
ANALYTES			• Sperm morphology
2026 Ship Dates	May 26	October 19	Two shipments per year One slide & image per shipment

Sperm Motility (MOT)

Item PT03230

Web-based videos of two semen samples with multiple microscopic fields showing live and immobilized sperm.

	CLIA REGULATED		UNREGULATED
ANALYTES			• Sperm motility • Sperm progressive motility
2026 Ship Dates	May 26	October 19	Two shipments per year Two videos per shipment



ONLINE TRAINING & COMPETENCY

WSLH PT brings you online training & competency in partnership with Medical Training Solutions (MTS) at the University of Washington



Clinical Laboratory

Track training and competency of staff involved in all phases of laboratory testing: specimen collection, transport, processing and analysis.



Point of Care

Administer and track competency tests for staff using microscopes, waived test kits, and instruments at the point of care.



Specimen Collection

Track and document training and competency assessment for specimen collection staff.

Provide your staff customizable online training & competency courses. Used by 1500 laboratories, these programs feature:

- Streamlined tracking and documentation
- High quality multimedia content developed with the University of Washington
- Over 80 hours of Continuing Education (CE) credit
- Create your own tests
- Upload and track your existing documents
- New questions in each Competency topic are published biannually
- Automated login - staff receive automated email with a link to login directly to their assignments menu
- Automated email notifications - one click sends reminders to staff
- Simple test interfaces - Easy-to-use multiple choice format
- Track progress in real-time and generate printable reports

[View a demo video](#) or [submit an order form](#) online at wslhpt.org.

ORDER OPTIONS

All order options include access for up to 30 individuals. Please consult the price list for additional fees for more than 30 users.

Order Options for Training Courses and Competency Tests

Items may be ordered separately or combined for savings. View complete order options for Training Courses and Competency Tests on the 2026 Price List.

Order Options for Microscopy Procedures (PPMP)

PPMP Training Courses and PPMP Competency Assessment may be ordered separately or combined for savings. View order options on the 2026 Price List.

Order Options for Waived Test Kits and POC Instruments (WPOC)

WPOC Competency Assessment may be ordered separately or as an add-on to any Training Course and/or Competency Test order. View order options on the 2026 Price List.



ONLINE TRAINING & COMPETENCY

TRAINING COURSES AND COMPETENCY TESTS

Initial enrollment includes 1-30 users. Additional fee applies for over 30 users; see price list.

Facility Fee (more than 30 users) **PT80910**

Training Courses and Competency Tests combined

All of both Training and Competency **PT80900**
Individual Training and Competency combined See below

Training Courses

All Training Courses **PT80000**
Individual Training Courses See below

Training courses are accredited for 1-3 hours of continuing education (CE) credit and can be used for initial training, cross training, remediation, and as a reference.

Blood Bank		Crithidia	PT80530	Fire Safety	PT80300
Introduction to Transfusion	PT80010	Laboratory Methods	PT80050	Formaldehyde Safety	PT80330
Transfusion Safety:		Mouse Stomach Kidney	PT80440	HazCom Standard - GHS Update	PT80270
Ordering & Administering	PT80230	Microbiology		UV Safety	PT80320
Specimen Collection	PT80240	Gram Stain	PT80030	Specimen Collection	
Testing and Issuance	PT80250	Mycology	PT80070	Advanced Phlebotomy	PT80350
Body Fluids		Parasitology	PT80220	Basic Phlebotomy	PT80100
Amniotic Fluid	PT80210	Micoscopy		Blood Culture	PT80390
Cerebrospinal Fluid	PT80020	Microscopy	PT80080	Infection Control	PT80280
Seminal Fluid	PT80180	Molecular Diagnostics		Patient Complications	PT80510
Serous Fluid	PT80190	Introduction to Molecular Diagnostics	PT80420	Patient Identification	PT80360
Synovial Fluid	PT80200	Orientation		Pediatric Phlebotomy	PT80340
Chemistry		HIPAA 101	PT80560	Skin Puncture	PT80370
Acute Kidney Injury	PT80570	Introduction to Analytic QA	PT80150	Venipuncture	PT80380
Cardiac Markers	PT80160	Introduction to the Clinical Laboratory	PT80060	Specimen Transport & Processing	
Protein Electrophoresis	PT80110	Patient Safety		Courier Transport	PT80410
Urinalysis	PT80140	Orientation to Patient Safety	PT80090	Specimen Processing	PT80130
Coagulation		Safety		Specimen Transport	PT80400
Coagulation	PT80170	Biosafety	PT80120	Utilization Management	
Hematology		Chemical Safety	PT80260	Case Studies in Laboratory	PT80540
Peripheral Blood	PT80040	Chemical Waste	PT80460	Stewardship	
Immunology		Dry Ice and Liquid Nitrogen Safety	PT80500	Managing Reference Labs	PT80550
ANCA	PT80450	Electrical Safety	PT80290		
Anti-nuclear Antibody	PT80430	Ergonomic Safety	PT80310		

Competency Tests

All Competency Tests **PT81000**
Individual Competency Tests See below

Five or ten-question multiple choice competency assessment tests are published biannually on January 1st and July 1st in each category.

Pre-Analytic		Transfusion Safety:		Hepatitis & HIV Ab	PT81070
Chain of Custody	PT81190	Ordering & Administering	PT81210	Microbiology	PT81090
Customer Service	PT81170	Specimen Collection	PT81220	Mouse Stomach Kidney	PT81260
Patient Safety	PT81100	Analytic		Protein Electrophoresis	PT81120
Pediatric Phlebotomy	PT81180	ANCA	PT81270	Semen Analysis	PT81230
Phlebotomy	PT81110	Anti-nuclear Antibody	PT81080	Toxicology	PT81150
Safety	PT81130	Chemistry	PT81030	Transfusion Safety: Testing and Issuance	PT81240
Specimen Processing	PT81140	Coagulation	PT81040	Transfusion Service: Basic	PT81010
Specimen Transport	PT81200	CSF/Serous	PT81020	Transfusion Service: Intermediate	PT81250
		Gram Stain	PT81050	Urinalysis	PT81160
		Hematology	PT81060		

ONLINE TRAINING & COMPETENCY

POINT OF CARE

Microscopy Procedures (PPMP)

- Training Courses & Competency Assessment

PPMP Training Courses	PT80520
PPMP Competency Assessment	PT81900
PPMP Training and PPMP Competency together	PT81920
PPMP Competency Add-on to Training and/or Competency	PT81903

Includes:	PPMP Training	PPMP Competency
	<ul style="list-style-type: none"> • Basic Microscopy • Fern Test • Pinworm • Qualitative Semen 	<ul style="list-style-type: none"> • Skin KOH • Urine Sediment • Vaginal Wet Prep • Fecal WBC • Fern Test • Nasal Eosinophils • Pinworm • Qualitative Semen • Skin KOH • Urine Sediment • Vaginal KOH • Vaginal Wet Prep

Waived Test Kits & POC Instruments (WPOC)

- Competency Assessment

WPOC Competency Assessment	PT81910
WPOC Competency Add-on to Training and/or Competency	PT81913

Includes:	1	2	3	4	5	6
	<ul style="list-style-type: none"> • Aceava Mono Cassette • Aceava Strep A • Accu-Chek Inform II • Alere hCG Cassette • Amniotest • AmniSure • Assure COVID-19 IgG/IgM • AVOXimeter 1000E • BiliChek • BinaxNow COVID-19 Ag Card • BinaxNow Influenza A&B Card 2 	<ul style="list-style-type: none"> • BinaxNOW RSV • Cepheid Xpress SARS-Co-V-2 • Chemstrip 10 SG • Cholestech LDX • Clinitek Status - Clinitest hCG • Clinitek Status - Multistix 10SG • CLOTtest • CoaguChek XS Plus PT/INR • ColoScreen • Consult Influenza A&B Cassette • DCA Vantage • Determine HIV Ag Ab Combo • ESR 	<ul style="list-style-type: none"> • Gastrocullt • HemaPrompt FG • Hemocult / Hemocult II • Hemocult Sensa • Hemochron Signature Elite • HemoCue 201 Glucose • HemoCue Hb 201 DM • HemoCue Hb 201+ • i-STAT - ACT • i-STAT - Operations • i-STAT CG4+ • i-STAT CG8+ • ID Now COVID-19 	<ul style="list-style-type: none"> • ID Now Influenza A&B • ID Now RSV • LeadCare II • McKesson hCG Urine • Multistix 10 SG • Nitrazine Paper • Nova StatStrip Glucose Meter • OraQuick Advance Rapid HIV-1/2 Antibody Test • Osom Card Pregnancy Test • OSOM hCG Combo • Osom Strep A 	<ul style="list-style-type: none"> • Osom Ultra Strep A • pHydrion Papers • Precision XceedPro • Proper Seracult • QuickVue Dipstick Strep A • QuickVue hCG Combo • QuickVue Influenza A+B • QuickVue Strep A • Refractometer, Urine Specific Gravity • ROM Plus • Sofia Influenza A+B 	<ul style="list-style-type: none"> • SP hCG Combo • SP Strep A Dipstick • Status Mono • Sure-Vue Fecal Occult Blood • Sure-Vue hCG Stat • Triage Cardiac Panel • Triage Meter TOX Drug Screen • Uristix • Urisys 1100

MTS LECTURE LIBRARY SUBSCRIPTION

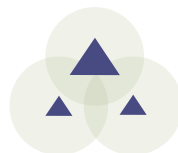
Subscription provides access to a monthly, live 1 hour webinar primarily focused on Laboratory Management topics.

Item PT81800

Subscribers may share the access with all employees in their organization. After participating in each webinar, users have the option to complete a test to earn 1.0 CE credits.

This subscription also provides the user access to the library of more than 60 archived lectures. Each lecture is archived and available on their MTS account approximately one month after the presentation date.

Upon completion of the archived lecture the user will be able to complete a 10 question test and then earn 1.0 CE credits.



ASSAYED SAMPLE SETS

Assayed Sample Set products provide high-quality samples which can be used for test validation, method correlation, calibration verification/linearity, employee training and/or competency, troubleshooting a PT failure, or other QA activities.

To order Assayed Sample Sets, [submit an order form](#) online at wslhpt.org.

Blood Lead (VSPB)

Item PT07030

Five samples per shipment

Blood lead assayed sample sets include samples which cover the analytical range of most instruments with the target value and acceptable range for each sample. Orders include five samples in the following ranges: 2-5 ug/dL, 10-15 ug/dL, 20-25 ug/dL, 35-40 ug/dL, and 45-50 ug/dL. Sample ranges are subject to change due to sample availability.

Blood Lead (VSBL)

Item PT07020

Three samples per shipment

Blood lead assayed sample sets include samples which cover the analytical range of most instruments with the target value and acceptable range for each sample. Orders include three samples in the following ranges: 2-5 ug/dL, 20-25 ug/dL, and 45-50 ug/dL. Sample ranges are subject to change due to sample availability.

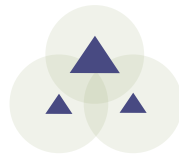
HIV (VSHV)

Item PT07010

Five liquid samples per shipment

Compatible with rapid and traditional testing methods along with automated combo assays used to detect HIV 1/2 antibody and p24 Antigen. Order includes 5 samples of either reactive or non-reactive targets.

For sample types other than HIV and Blood Lead, please call for pricing and availability OR [submit an order form](#) online at wslhpt.org.



ADDITIONAL PRODUCTS

Calibration Verification/Linearity Products

Provided in partnership with AUDIT MicroControls. Calibration Verification/Linearity products can assist laboratories in meeting CLIA calibration verification requirements.

Purchase includes access to AUDITOR™, a QC data reduction software tool to view group peer data, evaluate, and create reports. Shipping available in the US.

[View available products](#) and [submit an order form](#) online at wslhpt.org or contact customer service at (800) 462-5261.

Off-Schedule Proficiency Testing

WSLH PT can provide an off-schedule event in the case of PT failure (remedial) or for pre-licensure. Prior to ordering off-schedule events, contact your accrediting agency to confirm necessity of formal off-schedule PT and determine timeliness of need (immediate versus this quarter, 2-day versus priority overnight delivery), as these affect pricing.

Please call for pricing and availability: (800) 462-5261 or complete a [quote request](#) form online at wslhpt.org.

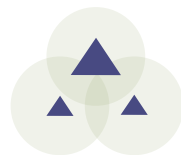
Supplies may be limited in quantity and shelf-life.

Binders

WSLH PT offers 3-ring binders to organize your proficiency testing records, which must be retained for two years, unless longer retention is required. Binders contain dividers, preprinted labels, and blank labels.

PT07000

Please indicate the number of binders desired on your order form.



SHIPPING SCHEDULE

Blood Gas				
Event	1	2	3	
Ships	03/02/26	06/22/26	10/26/26	* Ships events 1 and 2 only
Due	03/20/26	07/10/26	11/13/26	
QE Due	03/27/26	07/17/26	11/20/26	
Product Name	Item #	QE Item #		
Blood Gases / Electrolytes / Metabolites (BG)	PT01050	PT01060		
Blood Gas Hemoglobin / Hematocrit add-on (BGH)	PT01570	PT01580		
CO-Oximetry (CO)	PT01330	PT01340		
i-STAT Chemistries Plus (BGB)	PT01345	PT01347		
i-STAT Chemistries - Waived Methods (BGW) *	PT01400	PT01425		

Coag				
Event	1	2	3	
Ships	02/02/26	06/01/26	08/31/26	
Due	02/20/26	06/19/26	09/18/26	
QE Due	02/27/26	06/26/26	09/25/26	
Product Name	Item #	QE Item #		
Coagulation Basic (CA)	PT02060	PT02070		
Protime / INR - CoaguChek XS (PXS)	PT02350	PT02360		
Protime / INR - i-STAT and Coag-Sense (PRC)	PT02370	PT02380		

Coag QA				
Event	1	2	3	
Ships	02/02/26		08/31/26	
Due	02/20/26		09/18/26	
QE Due	02/27/26		09/25/26	
Product Name	Item #	QE Item #		
Activated Clotting Time (CT)	PT02030	PT02052		
D-dimer (DD)	PT02080	PT02105		
INR - CoaguChek Waived (CXSW)	PT02320	PT02345		
INR - Coag-Sense Waived (CW)	PT02310	PT02315		

HemeReg				
Event	1	2	3	
Ships	02/02/26	06/01/26	08/31/26	* Ships events 1 and 3 only
Due	02/20/26	06/19/26	09/18/26	
QE Due	02/27/26	06/26/26	09/25/26	
Product Name	Item #	QE Item #		
Hematology - Cell Identification (XI)	PT02220			
Hematology - Comprehensive (AF3)	PT02270	PT02280		
Hematology - Comprehensive (AF4)	PT02285	PT02286		
Hematology - Comprehensive (AF5)	PT02290	PT02300		
Hematology - Limited Sysmex (AS)	PT02200	PT02210		
Hematology - Limited (AT)	PT02190	PT02195		
Hematology - PixCell (PIX)	PT02298	PT02299		
Reticulocytes - Beckman Coulter (RTB) *	PT02442	PT02444		
Reticulocytes - Sysmex (RTS) *	PT02432	PT02434		

Coag, Coag QA, and HemeReg are a combined shipment
 Delivery for these products will be via overnight courier.

Chem/Endo/Tx				
Event	1	2	3	
Ships	02/16/26	05/18/26	09/28/26	* Ships events 1 and 3 only
Due	03/06/26	06/05/26	10/16/26	
QE Due	03/13/26	06/12/26	10/23/26	
Product Name	Item #	QE Item #		
Alcohol/Ketones, serum (AM)	PT01000	PT01010		
Bilirubin - Elevated (NB)	PT01430	PT01440		
Blood Lead-3 Samples (BL) *	PT01070	PT01077		
Blood Lead-5 Samples (PB)	PT01080	PT01085		
Cardiac Markers - 3 sample (TM) *	PT01230	PT01255		
Cardiac Markers - 5 sample (IE)	PT01260	PT01270		
Chemistry/Endocrinology/Therapeutic Drugs 1-11 (CET)	PT01310	PT01326		
Chemistry/Endocrinology/Therapeutic Drugs 12-21 (CET)	PT01314	PT01326		
Chemistry/Endocrinology/Therapeutic Drugs 22-30 (CET)	PT01318	PT01326		
Chemistry/Endocrinology/Therapeutic Drugs 31+ (CET)	PT01322	PT01326		
Chemistry - Waived Methods (WC) *	PT01282	PT01284		
hCG, serum - qualitative (HCG)	PT01480	PT01490		
hCG, serum - qualitative (HCG) - Add on to CET	PT01495			
Hemoglobin A1c (GHR)	PT01524	PT01529		
Hemoglobin A1c - Afinion (GHRA)	PT01525	PT01527		
Immunoassay Chemistry (CS)	PT01683	PT01684		
Immunoassay Chemistry B (CSB)	PT01712	PT01713		
Tumor Markers (MT)	PT01752	PT01753		
Urine Drug Adulteration Test (UDA)	PT01950	PT01955		
Urine Drug Screen (UD)	PT01810	PT01835		
Urine Drug Screen - Ethyl Glucuronide (ETG)	PT01980			

Special Chemistry				
Event	1	2	3	
Ships	02/16/26		09/28/26	
Due	03/06/26		10/16/26	
QE Due	03/13/26		10/23/26	
Product Name	Item #	QE Item #		
Ammonia (NH)	PT01020	PT01045		
Body Fluid Chemistry (PC)	PT01120	PT01145		
Body Fluid pH - Visual (PH)	PT01150	PT01175		
Procalcitonin (PCT)	PT01900	PT01905		
Spinal Fluid Chemistry (SF)	PT01720	PT01745		
Spinal Fluid Chemistry (SF) - Add on to PC	PT01722			
Urine Chemistry 1-3 (CU)	PT01780	PT01785		
Urine Chemistry 4-10 (CU)	PT01786	PT01791		
Urine Chemistry 11+ (CU)	PT01792	PT01797		
Urine Chemistry Afinion (ACR)	PT01960			

Chem/Endo/Tx and Special Chemistry are a combined shipment

SHIPPING SCHEDULE

Blood Bank				
Event	1	2	3	
Ships	02/23/26	06/15/26	10/05/26	* Ships events 1 and 3 only
Due	03/13/26	07/03/26	10/23/26	
QE Due	03/20/26	07/10/26	10/30/26	
Product Name			Item #	QE Item #
Blood Bank Comprehensive (AB)			PT04120	PT04130
Blood Bank Limited (AB)			PT04140	PT04150
Blood Bank Direct Antiglobulin Test (DAT) *			PT04145	PT04146

Delivery for Blood Bank will be via overnight courier.

Immunology				
Event	1	2	3	
Ships	01/20/26	05/11/26	08/24/26	* Ships events 1 and 3 only
Due	02/06/26	05/29/26	09/11/26	
QE Due	02/13/26	06/05/26	09/18/26	
Product Name			Item #	QE Item #
CRP Immunoserology (XP) *			PT04160	PT04185
Helicobacter pylori Serology (HL) *			PT04010	
Hepatitis (YB)			PT04190	
Hepatitis (YB) - Add on to HV or HVC			PT04195	
Hepatitis C - Waived Methods (YBC) *			PT04192	PT04193
HIV (HV)			PT04020	PT04030
HIV - Waived Methods (HWW) *			PT04040	PT04062
Infectious Disease Serology (MMV) *			PT04320	
Lyme Disease Serology (LY) *			PT04200	
Mono Immunoserology (ZM)			PT04210	
Mono Immunoserology Waived (MW) *			PT04220	PT04245
Mycoplasma Antibody (MP) *			PT04300	
Rheumatoid Factor (ZR)			PT04250	
Rubella IgM Immunoserology (XM) *			PT04330	
Rubella Immunoserology (XU)			PT04260	
Syphilis Serology (SS)			PT04270	PT04280
Syphilis Serology - Waived Methods (SSW) *			PT04272	PT04273

Semen				
Event	1	2		
Ships	05/26/26	10/19/26		
Due	06/12/26	11/06/26		
Product Name			Item #	
Amniotic Fluid Detection (AE)			PT03000	
Fetal Fibronectin (FFN)			PT03100	
Post-Vasectomy Semen Analysis (PV)			PT03140	
Post-Vasectomy with Motility (PVM)			PT03145	
Sperm Count (SP)			PT03200	
Sperm Morphology pre-stained slide (SMS)			PT03220	
Sperm Morphology unstained slide (SM)			PT03210	
Sperm Motility (MOT)			PT03230	

MiscQA_POC				
Event	1	2		
Ships	04/06/26	10/12/26		WBG QE (1895) due 2 weeks after due date
Due	04/24/26	10/30/26		
QE Due	05/01/26	11/06/26		
WBG QE	05/08/26	11/13/26		
Due				
Product Name			Item #	QE Item #
Body Fluid Cell Count - Automated (BFA)			PT03030	PT03037
Body Fluid Cell Count - Manual (BFM)			PT03040	
Body Fluid Microscopy (BF)			PT03050	
Chemistry - Waived Lipids and Glucose (WCL)			PT01288	PT01289
Fecal Lactoferrin (LF)			PT03060	
Fecal Occult Blood (OC)			PT03071	PT03074
Fecal Occult Blood (OC) - POC			PT03073	PT03074
Gastric Occult Blood (GO)			PT03110	PT03135
Glucose, Whole Blood (WBG)			PT01880	PT01895
Glucose, Whole Blood (WBG) - POC			PT01883	PT01895
Group A Strep - Waived Methods (WS)			PT05130	PT05155
Group A Strep - Waived Methods (WS) - POC			PT05135	PT05155
Hematocrit - Waived Methods (HW)			PT02150	PT02175
Hemoglobin - HemoCue Hb 301 and Hb 801 - Waived (HWH)			PT01455	PT01465
Hemoglobin - HemoCue Hb 301 and Hb 801 - Waived (HWH) - POC Add-on			PT01456	PT01465
Hemoglobin - Waived Methods (HWG)			PT01450	PT01475
Hemoglobin - Waived Methods (HWG) - POC Add-on			PT01451	PT01475
Hemoglobin A1c - Waived Methods (GH)			PT01532	PT01533
Hemoglobin A1c - Afinion - Waived Methods (GHA)			PT01534	PT01535
Mono Immunoserology - Waived Methods (MW) - POC Add-on			PT04222	
Provider Performed Microscopy (PM)			PT03170	PT03195
Provider Performed Microscopy (PM) - POC			PT03175	PT03195
Sedimentation Rate (SR)			PT02450	PT02465
Sedimentation Rate - Alcor and Alifax (SRI)			PT02520	PT02525
Sedimentation Rate - Sedimat 15, ESR STAT-6/PLUS (SRA)			PT02470	PT02485
Sickle Cell Screen (SK)			PT02490	PT02515
Urinalysis and Urine hCG (UR)			PT03260	PT03285
Urinalysis and Urine hCG (UR) - POC			PT03265	PT03285
Urine hCG (UH)			PT03291	PT03292
Urine Sediment Identification (SU)			PT03320	PT03345

SHIPPING SCHEDULE

Bacti_Viral				
Event	1	2	3	
Ships #	01/05/26	05/04/26	08/17/26	# Mycology Culture modules ship 5 weeks ahead of other modules.
Ships	02/09/26	06/08/26	09/21/26	
Due	02/27/26	06/26/26	10/09/26	* Ships events 1 and 3 only
QE Due	03/06/26	07/03/26	10/16/26	
Product Name	Item #	QE Item #		
Mycology Comprehensive (MY) #	PT06070			
Mycology Dermatophyte (DM) #	PT06090			
Mycology Yeast (YE) #	PT06100			
Bacterial Vaginosis Detection - Waived Methods (BV) *	PT05005			
Bacteriology - Limited (MBC)	PT05036			
Bacteriology - Comprehensive (MBC)	PT05038			
Bacteriology - Blood Culture (MBC)	PT05039			
Blood Parasites (PAB)	PT06020			
Blood Pathogen Multiplex (BPM)	PT05480			
Bordetella by Molecular Methods (BOR)	PT05055			
C. difficile (CD)	PT05060	PT05065		
CT/GC/TV Detection (AC)	PT05070			
Enteric Pathogens (NP)	PT05080			
GI Multiplex (EP)	PT05380			
GI Multiplex Add-on (EP)	PT05381			
Giardia/Cryptosporidium Antigen (GI)	PT06030			
Gram Stain (GS)	PT05090	PT05100		
Group A Strep Antigen (SA)	PT05110	PT05120		
Group B Strep (SB)	PT05180	PT05185		
Helicobacter pylori Antigen, Stool (HPSA)	PT05401	PT05403		
Helicobacter pylori Rapid Urease (RUR) *	PT05500			
HSV Molecular (HSV)	PT06220			
KOH Slides (KOH) *	PT06230			
Legionella Antigen (LGA)	PT05440	PT05441		
Meningitis Multiplex (MEP)	PT05450			
MRSA (MR)	PT05200	PT05210		
Mycoplasma genitalium Molecular (MG)	PT05461			
Parasitology Comprehensive (PA)	PT06110			
Respiratory Multiplex (RP)	PT06240	PT06244		
Respiratory Multiplex Add-on (RP)	PT06241			
S. pneumoniae Antigen (BA)	PT05000			
SARS-CoV-2 Antigen (CV)	PT06288	PT06289		
SARS-CoV-2 Antigen- Waived Methods (CVW) *	PT06290	PT06295		
SARS-CoV-2/Flu Antigen Combo- Waived (CFW) *	PT06292	PT06293		
SARS-CoV-2 Molecular Liquid (CLM)	PT06300	PT06305		
SARS/Viral Molecular (CM)	PT06270	PT06275		
SARS/Viral Molecular-Waived Methods (CMW) *	PT06280	PT06285		
Shiga Toxin (SHG)	PT05241	PT05242		
Strep Identification (ST)	PT05170			
Throat/Urine Bacteriology (TU)	PT05250			
Throat/Urine Bacteriology Limited (TU)	PT05260			
Trichomonas - Waived Methods (TV) *	PT05310	PT05315		
Urine Culture (UC)	PT05270			
Vaginal Pathogens (VP)	PT05280	PT05290		
Viral - Limited (VA)	PT06150	PT06160		
Viral - Waived Methods (VCW) *	PT06170	PT06195		
Viral with Rotavirus (VA)	PT06200	PT06210		
VP Molecular (VPM)	PT05470			

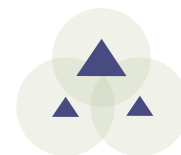
Bioterrorism Prep				
Event	1	2		
Ships	03/09/26	10/05/26		
Due	03/27/26	10/23/26		
Product Name	Item #			
Bioterrorism Preparedness Exercise (BPE)	PT06010			

CRE				
Event	1	2		
Ships	03/23/26	10/19/26		
Due	04/10/26	11/06/26		
QE Due	04/17/26	11/13/26		
Product Name	Item #	QE Item #		
Carbapenem Resistance Detection (CR)	PT05330	PT05335		
Carbapenem Resistance Detection (CR)	PT05300			

Frozen Micro				
Event	1	2		
Ships	04/13/26	10/05/26		
Due	05/01/26	10/23/26		
QE Due	05/08/26	10/30/26		
Product Name	Item #	QE Item #		
Rabies by DFA (RA)	PT06130	PT06137		
Rabies by dRIT (RA)	PT06140	PT06147		

Delivery for Frozen Micro will be via overnight courier.

Mycobacteriology				
Event	1	2	3	
Ships #	01/26/26	08/03/26		# Mycobacteriology Culture module ships 6 weeks ahead of other modules.
Ships	03/09/26	09/14/26		
Due	03/27/26	10/02/26		
QE Due	04/03/26	10/09/26		
Product Name	Item #	QE Item #		
Mycobacteriology Culture (MB) #	PT06060			
Acid-Fast Stain (MA)	PT06000			
Acid-Fast Stain (MA) - Add on to MB	PT06005			
M. tuberculosis Molecular (TB)	PT06050	PT06055		



INDEX

A

ABO group	27
A/C ratio	18
Acetaminophen	14
Acetone.	11
6-AM (6-Acetylmorphine)	19
Acid-fast stain	45
Acinetobacter	34
Activated clotting time (ACT)	20
Activated partial thromboplastin time (APTT)	20
Adenovirus	35, 50, 51
Aerobic Actinomycetes identification	46
Aeromonas	39
Alanine Aminotransferase (ALT)	14, 15
Albumin	14, 15
Albumin, body fluid	12
Alcohol (ethanol)	11
Alcohol (ethanol), urine.	19
Alkaline phosphatase (ALKP)	14, 15
Alpha-fetoprotein	14
Ammonia	11
Amniotic fluid detection	12, 52
Amphetamines.	19
Amylase.	14, 15
Amylase, body fluid	12
Amylase, urine	18
Anaerobic bacteria culture	36
Andrology	56, 57
Antibody identification, blood bank	27
Anti-HIV	29, 61
Antimicrobial susceptibility	36, 43, 44
Aspartate Aminotransferase (AST)	14, 15
Astrovirus.	35

B

Bacterial identification	34, 38, 39, 41, 48
Bacterial vaginosis detection	37, 44
Bacteroides	34
Bacteriology	33-44
Barbiturates	19
Benzodiazepines	19
Beta-2 Microglobulin	18
Beta-hydroxybutyrate.	11
Bilirubin, direct	11, 14
Bilirubin, total	11, 14, 15
Bilirubin, urine	54
Bioterrorism Preparedness Exercise	37
Blood Bank	27
Blood culture	36, 37
Blood Pathogen Multiplex	38
Blood Gases	9, 10
Blood Lead	12, 61
Blood parasite identification	47
BNP.	13
Bordetella	34, 38
Borrelia burgdorferi (Lyme disease).	30
Buprenorphine.	19

C

C. difficile.	34, 36, 38
C-peptide	16
C-reactive protein (CRP).	13, 28
CA 125	18
CA 15-3.	18
CA 19-9.	18
CA 27.29	18
Calcium, ionized	9
Calcium, total	14, 15
Calcium, urine	18
Campylobacter	34, 39
Candida.	34, 44
Cannabinoids (THC)	19
Carbamazepine	14
Carbapenem resistance	38
Carbon dioxide (CO ₂).	9, 14, 15
Carboxyhemoglobin.	10
Carcinogenic embryonic antigen (CEA)	17
Cardiac Markers	13
Cell identification, body fluid.	52
Cell identification, hematology	24
Chemistry - Body Fluid	12
Chemistry - Immunoassay	17
Chemistry - Spinal Fluid	17
Chemistry - Urine	18
Chemistry - Waived Methods	10, 15
Chlamydia	34, 39
Chloride	9, 14, 15
Chloride, urine	18
Cholesterol, body fluid	12
Cholesterol, HDL	14, 15
Cholesterol, LDL	14, 15
Cholesterol, total	14, 15
Citrobacter.	34
CK-MB	13
Coagulation	20, 21
Cocaine metabolites	19
Colony Count (urine culture)	36, 43, 44
Compatibility testing	27
Coronavirus	35
Cortisol	14
Cotinine.	19
Creatine Kinase (CK)	13, 14, 15
Creatinine	9, 10, 14, 15
Creatinine, body fluid	12
Creatinine, urine	18, 19
Cryptococcus	34
Cryptosporidium.	34, 47
Crystal identification, body fluid.	52
Cyclospora	34
Cytomegalovirus (CMV)	35

D

DAT	27
D-dimer	13, 20
Dermatophyte	46
DHEA Sulfate	17
Digoxin	14

E

EDDP	19
Endocrinology	14
Entamoeba	34
Enteric pathogen identification	36
Enterobacter	34
Enterococcus	34
Enterovirus (EV)	35
Eosinophils, nasal smear	53
Erythrocyte count (RBC), blood.	23, 24
Erythrocyte count (RBC), body fluid	52
Erythrocyte sedimentation rate	25
Escherichia (E. coli)	34, 39
Estradiol	17
Ethanol (alcohol)	11
Ethanol (alcohol), urine.	19
Ethyl Glucuronide (EtG)	19

F

Fecal occult blood	53, 55
Fecal smear for leukocytes	53
Fentanyl	19
Fern test	53
Ferritin	17
Fetal fibronectin	53
Folate	17
Follicle stimulating hormone (FSH)	17
Free thyroxine (FT4)	14
Free triiodothyronine (FT3)	14
Fungal Identification	34, 38, 41

G

Gamma glutamyltransferase (GGT)	14, 15
Gardnerella detection.	44
Gastric occult blood.	53
Gentamicin.	14
GI multiplex	39
Giardia	34, 47
Glucose.	9, 14, 15
Glucose, body fluid	12
Glucose, spinal fluid.	17
Glucose, urine	18, 54
Glucose, whole blood.	15, 55
Glycohemoglobin (Hemoglobin A1c)	16
Gram stain reaction/morphology	36, 37, 40, 43, 44
Group A Strep	36, 40, 43, 55
Group B Strep	36, 40

H

Haemophilus	34
hCG, serum	14
hCG, urine	54
Helicobacter pylori (total antibody)	28
Helicobacter pylori Antigen, Stool.	41
Hematocrit	9, 10, 23, 24, 26
Hematology	22-26
Hemoglobin	9, 10, 23, 24, 26, 55
Hemoglobin A1c (Glycohemoglobin)	16
Hemoglobin/Blood, urine	54
Hepatitis - Anti-HAV, IgM.	28
Hepatitis - Anti-HBc (total antibody)	28
Hepatitis - Anti-HBc, IgM	28

Hepatitis - Anti-HBs	28
Hepatitis - Anti-HCV	28
Hepatitis - HBsAg	28
Herpes simplex virus (HSV)	35, 48
HIV (Anti-HIV)	29, 61
HIV-p24 Antigen	29, 61
Homocysteine	17
hs-CRP	13
Human herpesvirus 6 (HHV-6)	35
Human metapneumovirus	35
Human parechovirus (HPEV).	35
Human Rhinovirus/Enterovirus.	35

I

IG	23
IGFBP, amniotic fluid	52
Immunohematology.	27
Immunology	28-32
Infectious mononucleosis	30, 55
Influenza	35, 49, 50, 51
INR	30, 21
Insulin	17
Ionized calcium	9
Ionized magnesium	9
IPF	23
IRF.	24
Iron binding capacity (TIBC)	14
Iron, total	14

K

Ketones.	11
Ketones, urine	54
Klebsiella	34
KOH (skin & vaginal)	53
KOH Preparation	46

L

Lactate (Lactic acid)	9, 14
Lactate (Lactic acid), spinal fluid	16
Lactate dehydrogenase (LDH)	14
Lactate dehydrogenase (LDH), body fluid.	12
Lactic acid	17
Lactoferrin	52
Lead, blood	12, 61
Legionella	41
Leukocyte count (WBC), blood	23, 24
Leukocyte count (WBC), body fluid.	52
Leukocyte esterase	54
Leukocytes, fecal smear	53
Lipase.	14
Listeria	34
Lithium	14
Luteinizing hormone (LH)	17
Lyme disease (Borrelia burgdorferi).	30

INDEX

M

Magnesium	14
Magnesium, ionized	9
Magnesium, urine	18
MCH	23, 24
MCHC	23, 24
MCV	23, 24
MDMA (Ecstasy)	19
Measles IgG, IgM	29
Meningitis Multiplex	41
Methadone	19
Methamphetamines	19
Methaqualone	19
Methemoglobin	10
Methicillin-resistant Staph aureus (MRSA)	36, 42
Microalbumin	18
Mold, yeast, and yeast-like organism identification	46
Mononucleosis infectious	30, 55
MPV	23, 24
Multiplex Panels	38, 39, 41, 48
Mumps IgG, IgM	29
Mycobacteriology, tuberculosis	45
Mycology	34, 46
Mycoplasma	34, 42
Mycoplasma antibody	30
Myoglobin	13

N

Nasal smear for eosinophils	53
Neisseria gonorrhoeae	36, 39
Neisseria meningitidis	34
Nitrites	19, 54
Norovirus	35
Nucleated red blood cells (NRBC)	23

O

Occult blood, fecal	53, 55
Occult blood, gastric	53
Opiates	19
Osmolality	14
Osmolality, urine	18
Oxidants	19
Oxycodone	19
Oxyhemoglobin	10

P

p24 Antigen	29, 61
PAMG-1 protein, amniotic fluid	52
Parainfluenza	35
Parasite identification	34, 39
Parasitology	34, 47
pCO ₂	9
pH, amniotic fluid	12
pH, blood	9
pH, body fluid	12
pH, urine	19, 54
Phencyclidine (PCP)	19
Phenobarbital	14
Phenytoin (Dilantin)	14
Phosphorus	14, 15

Phosphorus, urine	18
Pinworm preparation	53
Platelet count	23, 24
Plesiomonas	34, 39
pO ₂	9
Post-vasectomy	56
Potassium	9, 14, 15
Potassium, urine	18
PP12/AFP, amniotic fluid	52
Prealbumin	17
proBNP	13
Procalcitonin	17
Progesterone	17
Prolactin	17
Propoxyphene	19
Prostate-specific antigen (PSA), free	18
Prostate-specific antigen (PSA), total	17
Protein, body fluid	12
Protein, spinal fluid	17
Protein, total	14, 15
Protein, urine	18, 54
Proteus	34
Protine (PT)	20, 21
Provider Performed Microscopy	53, 55
Pseudomonas	34
PTH, intact	17

R

Rabies Antigen	48
Rapid Urease	41
RBC (Erythrocyte count), blood	23, 24
RBC (Erythrocyte count), body fluid	52
RDW	23, 24
Re-He	24
Resistance genes	35, 38
Respiratory Multiplex	48
Respiratory syncytial virus (RSV)	35, 50, 51
Reticulocyte count	24
Rh (D) typing	27
Rheumatoid factor	31
Rhinovirus/Enterovirus	35
Rifampin resistance screen (M. tuberculosis)	45
Rotavirus	35, 51
Rubella IgG	31
Rubella IgM	31
Rupture of fetal membranes	12, 52

S

Salicylate	14
Salmonella	34, 39
Sapovirus	35
SARS-CoV-2	35, 48, 49, 50
Serratia	34
Shiga toxin	42
Shigella	39
Sickle cell screen	26
Sodium	9, 14, 15
Sodium, urine	18
Specific gravity	19, 54
Sperm count	56
Sperm morphology	57
Sperm motility	56, 57
Sperm progressive motility	57

INDEX

Staphylococcus	34, 42
Stenotrophomonas	34
Stool parasite identification	47
Strep A	36, 40, 43, 55
Strep B	36, 40
Strep identification/culture.	36, 43
Streptococcus	34, 42
Syphilis	32

T

T3 Uptake / T-Uptake	14
Testosterone, total	17
Theophylline	14
Therapeutic Drugs	14
Thyroid-stimulating hormone (TSH)	14
Thyroxine (T4)	14
TIBC (Iron binding capacity)	14
Tobramycin	14
Tramadol	19
Transferrin	17
Trichomonas detection	39, 44, 47
Tricyclic antidepressants	19
Triglycerides	14, 15
Triglycerides, body fluid	12
Triiodothyronine (T3)	14
Troponin I	13
Troponin T	13
Tumor Markers	14

U

UIBC	14
Unexpected antibody detection.	27
Urea nitrogen, blood (BUN)	9, 14, 15
Urea nitrogen, urine	18
Urease	41
Uric acid	14, 15
Uric acid, urine	18
Urinalysis	54, 55
Urine adulteration test	19
Urine culture	36, 43, 44
Urine drug screen	19
Urine hCG	55, 55
Urine sediment	53, 54
Urobilinogen	54

V

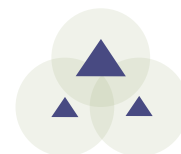
Vaginal wet preparation.	53
Valproic acid	14
Vancomycin	14
Vancomycin-resistant Enterococcus (VRE)	36
Varicella zoster IgG, IgM	29
Varicella zoster virus (VZV).	35
Vibrio	34, 39
Viral identification	35, 39, 41, 48
Virology	35, 48, 49, 50, 51
Vitamin B12.	17
25-OH Vitamin D, total	17

W

WBC (Leukocyte count), blood	23, 24
WBC (Leukocyte count), body fluid.	52
WBC differential - automated	23, 24
Whole Blood Glucose.	15, 55

Y

Yeast and yeast-like organism identification	46
Yersinia	34, 39



YOUR LAB OUR MISSION

WSLH Proficiency Testing



With WSLH PT, you receive reliable, affordable, and easy-to-use laboratory proficiency testing products with rapid access to results.

You may request a free no-obligation quote at any time. We also offer additional services throughout the year, including:

- Calibration verification products
- Assayed Samples
- Off-schedule and pre-licensure events
- Online training and competency courses

We are your PT provider, backed by a national public health lab and a Big Ten university. Our unique affiliations provide you with the technical expertise and educational resources to set you up for PT success.

In 1966, the Wisconsin State Lab of Hygiene created proficiency testing programs to improve laboratory quality. From these efforts, WSLH PT was established. Today, we serve clinical laboratories like yours throughout the United States, and globally.

WSLH PT is approved by CMS, and accepted by CAP, COLA, and The Joint Commission. To learn more, please visit our site at wslhpt.org.

2026 SHIPPING SCHEDULE

JANUARY

Su	M	Tu	W	Th	F	Sa
				1	2	3
4	5	6	7	8	9	10
11	12	13	14	15	16	17
18	19	20	21	22	23	24
25	26	27	28	29	30	31

5: Bacti_Viral1 (Mycology culture modules)
 20: Immunology1
 26: Mycobacteriology1 (culture module)

FEBRUARY

Su	M	Tu	W	Th	F	Sa
1	2	3	4	5	6	7
8	9	10	11	12	13	17
15	16	17	19	19	20	21
22	23	24	25	26	27	28

2-3: Coag1, Coag QA1, Heme Reg1
 9-10: Bacti_Viral1
 16-17: Chem/Endo/Tx1, Special Chemistry1
 23: Blood Bank1

MARCH

Su	M	Tu	W	Th	F	Sa
1	2	3	4	5	6	7
8	9	10	11	12	13	14
15	16	17	18	19	20	21
22	23	24	25	26	27	28
29	30	31				

2: Blood Gas1
 9: Bioterrorism Prep1, Mycobacteriology1
 23: CRE1

APRIL

Su	M	Tu	W	Th	F	Sa
			1	2	3	4
5	6	7	8	9	10	11
12	13	14	15	16	17	18
19	20	21	22	23	24	25
26	27	28	29	30		

6-7: MiscQA_POC1
 13: Frozen Micro1

MAY

Su	M	Tu	W	Th	F	Sa
					1	2
3	4	5	6	7	8	9
10	11	12	13	14	15	16
17	18	19	20	21	22	23
24	25	26	27	28	29	30
31						

4: Bacti_Viral2 (Mycology culture modules)
 11: Immunology2
 18-19: Chem/Endo/Tx2
 26: Semen1

JUNE

Su	M	Tu	W	Th	F	Sa
	1	2	3	4	5	6
7	8	9	10	11	12	13
14	15	16	17	18	19	20
21	22	23	24	25	26	27
28	29	30				

1-2: Coag2, Heme Reg2
 8-9: Bacti_Viral2
 15: Blood Bank2
 22: Blood Gas2

JULY

Su	M	Tu	W	Th	F	Sa
			1	2	3	4
5	6	7	8	9	10	11
12	13	14	15	16	17	18
19	20	21	22	23	24	25
26	27	28	29	30	31	

No shipments

AUGUST

Su	M	Tu	W	Th	F	Sa
						1
2	3	4	5	6	7	8
9	10	11	12	13	14	15
16	17	18	19	20	21	22
23	24	25	26	27	28	29
30	31					

3: Mycobacteriology2 (culture module)
 17: Bacti_Viral3 (Mycology culture modules)
 24: Immunology3
 8/31-9/1: Coag3, Coag QA2, Heme Reg3

SEPTEMBER

Su	M	Tu	W	Th	F	Sa
		1	2	3	4	5
6	7	8	9	10	11	12
13	14	15	16	17	18	19
20	21	22	23	24	25	26
27	28	29	30			

8/31-9/1: Coag3, Coag QA2, Heme Reg3
 14: Mycobacteriology2
 21-22: Bacti_Viral3
 28-29: Chem/Endo/Tx3, Special Chemistry2

OCTOBER

Su	M	Tu	W	Th	F	Sa
				1	2	3
4	5	6	7	8	9	10
11	12	13	14	15	16	17
18	19	20	21	22	23	24
25	26	27	28	29	30	31

5: Blood Bank3, Bioterrorism Prep2, Frozen Micro2
 12-13: MiscQA_POC2
 19: Semen2, CRE2
 26: Blood Gas3

NOVEMBER

Su	M	Tu	W	Th	F	Sa
1	2	3	4	5	6	7
8	9	10	11	12	13	14
15	16	17	18	19	20	21
22	23	24	25	26	27	28
29	30					

No shipments

DECEMBER

Su	M	Tu	W	Th	F	Sa
		1	2	3	4	5
6	7	8	9	10	11	12
13	14	15	16	17	18	19
20	21	22	23	24	25	26
27	28	29	30	31		

No shipments
 Happy New Year!