



**WSLH Proficiency Testing**  
WISCONSIN STATE LABORATORY OF HYGIENE  
UNIVERSITY OF WISCONSIN-MADISON

# PRODUCT CATALOG 2026

Approved by CMS and accepted by  
CAP, COLA, and The Joint Commission





# A LEGACY OF EXCELLENCE AND SERVICE

1966 - Present

Under the leadership of Dr. Stanley L. Inhorn, the Wisconsin State Lab of Hygiene creates a proficiency testing program in 1966 to serve medical laboratories.

After The Clinical Laboratory Improvement Amendments (CLIA), WSLH PT expands drastically, serving thousands of laboratories across the United States.

"Service and excellence, it's in our DNA. When you partner with us, you are choosing a PT provider who is going to give you the support you need to achieve your quality assurance goals."

Mike Argall, MT (ASCP), Director of WSLH PT

# TABLE OF CONTENTS

4	Why WSLH PT?
6	Score Transmission Information
8	Product Information
9	Chemistry - Blood Gas/Oximetry
11	Chemistry - General
20	Coagulation
22	Hematology
27	Immunohematology - Blood Bank
28	Immunology
33	Microbiology
36	Microbiology - Bacteriology
45	Microbiology - Mycobacteriology
46	Microbiology - Mycology
47	Microbiology - Parasitology
48	Microbiology - Virology
52	Urinalysis/Microscopy/Misc.
56	Andrology
58	Online Training and Competency
61	Assayed Sample Sets
62	Additional Products
63	Shipping Schedule
66	Index



## YOUR LAB, OUR MISSION

Reliable, affordable and easy-to-use proficiency testing with rapid access to results.

WSLH PT, backed by a national public health laboratory and a Big Ten university.

Approved by CMS and accepted by CAP, COLA, and The Joint Commission.

## OUR HISTORY

In 1966, WSLH PT was developed by the Wisconsin State Lab of Hygiene (WSLH) to create proficiency testing programs that improved laboratory quality. Today, as part of this national public health laboratory, we are proud to provide you with the highest quality service to meet your needs.

Based in Madison, Wisconsin, we are affiliated with the state's flagship higher education institution, the University of Wisconsin-Madison. Our unique affiliations provide you with the technical expertise and educational resources to set you up for PT success.

## OUR COMMUNITY

Each of our clinical proficiency testing programs has a dedicated Medical Technologist with at least 5 years of laboratory bench experience, extensive instrument knowledge, and exceptional customer service skills to meet your laboratory's needs. WSLH PT is approved by CMS and accepted by CAP, COLA, and The Joint Commission.



# WHY WSLH PT?

Reliable, affordable, & easy-to-use proficiency testing products

I placed a small order; however, you treated me with the professionalism and the attention as if I had place a large order.

-Jason C.

Working with WSLH was an excellent experience.

-Cathy S.

Great customer service!

-Warren B.



## HOW CAN WE BEST SERVE YOU?

We want to know! Contact us at (800) 462-5261 or [ptservice@slh.wisc.edu](mailto:ptservice@slh.wisc.edu)



# Enrollment made easy

Request a free, no-obligation quote anytime at [wslhpt.org](https://wslhpt.org)

## NEW CUSTOMERS

Submit an [Order Form](#)

To order, submit a form online at [wslhpt.org](https://wslhpt.org). Once you have submitted your form, customer service will assign your lab a WSLH PT ID number and email you an enrollment confirmation. You can expect to receive a confirmation letter and a customized shipping schedule via email within 24-48 hours of order receipt. Experienced medical technologists are available Monday-Friday, 8:00am-4:30pm (CST) to assist you at (800) 462-5261.

## CURRENT CUSTOMERS

### 2026 Enrollment

Current customers will receive a new catalog and a re-enrollment packet via email. This packet will contain a list of programs that the lab was enrolled in the previous year. Review and edit selections where necessary and return forms for processing. You can expect to receive a confirmation letter and a customized shipping schedule via email once re-enrollment has been processed.

### Changes to Active Enrollment or Account Information

To update contact or agency information, or add or drop PT enrollment at any time, please complete a [Customer Change Form](#) at [wslhpt.org](https://wslhpt.org). Account changes require written documentation. You will receive an updated enrollment confirmation reflecting the requested changes.

## SHIPPING INFORMATION

WSLH PT provides a customized shipping schedule with your enrollment confirmation. Customers with a valid email address under "Shipping Information" on the Enrollment Form will receive an email notification for each shipment. Most packages will arrive within 2 days of the scheduled ship date. Overnight shipments are designated on the shipping calendar. Your facility must make arrangements to accept delivery and have the package routed immediately to the appropriate location for proper handling and storage.

If you do not receive samples within 2 days of the scheduled ship date, please contact WSLH PT at (800) 462-5261. Please notify WSLH PT in advance of any address changes. Import permits or customs forms must be provided by international customers at least 30 calendar days prior to the first scheduled shipment.

## CANCELLATION OF PRODUCTS

To cancel products, complete a [Customer Change Form](#) online at [wslhpt.org](https://wslhpt.org). All cancellations must be submitted in writing at least 30 days prior to a scheduled shipment date. A credit will be applied to your account, if appropriate. The annual processing fee is non-refundable. Refund requests will be handled on a case-by-case basis by the accounts receivable department.

To assure participation in all shipments, enrollment and order forms must be received by December 1st. Contact us for sample availability after December 1st.

# SCORE TRANSMISSION & ACCREDITATION

## REPORTING THE SAME CLIA REGULATED ANALYTE IN MULTIPLE MODULES OR WITH MULTIPLE PT PROVIDERS

Under CLIA section 493.801:

(a) **Standard; Enrollment.** *The laboratory must—*

(1) *Notify HHS of the approved program or programs in which it chooses to participate to meet proficiency testing requirements of this subpart.*

(2) (i) *Designate the program(s) to be used for each specialty, subspecialty, and analyte or test to determine compliance with this subpart if the laboratory participates in more than one proficiency testing program approved by CMS*

(4) *Authorize the proficiency testing program to release to HHS all data required to—*

(i) *Determine the laboratory's compliance with this subpart; and*

(ii) *Make PT results available to the public as required in section 353(f)(3)(F) of the Public Health Service Act.*

(b) (7) *PT is required for only the test system, assay, or examination used as the primary method for patient testing during the PT event.*

WSLH PT offers reporting for the same CLIA regulated analyte in multiple modules. To assist labs with meeting the CLIA requirements above, WSLH PT provides the list of CLIA regulated analytes that are available to report in multiple modules as well as the order in which the scores are sent to CMS and applicable agencies in the chart below.

For example, looking at the chart below, if you are reporting Glucose with module 1310 and 1050, the Glucose score from 1310 will be sent to agencies. If you are reporting BUN with module 1050 and 1345, the BUN score from module 1050 will be sent to agencies.

Note: It is important to notify your proficiency testing (PT) provider if you are reporting the same CLIA regulated analyte with multiple PT providers so they know how to properly handle your agency score transmission. WSLH PT follows the table below to send scores to your applicable agencies. Please notify WSLH PT if your lab does not want scores sent and/or prefer scores for an analyte to be sent from a different module to your accreditation agency.

	CLIA Regulated Analytes that are Available to Report in Multiple Modules	Module Order for Score Transmission *Immunology section lists Score Transmission by Analyte Order
<b>Chemistry</b>	<ul style="list-style-type: none"> <li>Chloride</li> <li>CO<sub>2</sub>, total</li> <li>Creatinine</li> <li>Glucose</li> <li>Potassium</li> <li>Sodium</li> <li>Urea Nitrogen (BUN)</li> </ul>	<ol style="list-style-type: none"> <li>Modules 1310, 1314, 1318, 1322 – Chemistry/Endocrinology/Therapeutic Drugs (CET)</li> <li>Module 1050 – Blood Gases/ Electrolytes / Metabolites (BG)</li> <li>Module 1345 – i-STAT Chemistries PLUS (BGB)</li> </ol>
	<ul style="list-style-type: none"> <li>Creatine Kinase (CK), total</li> </ul>	<ol style="list-style-type: none"> <li>Modules 1310, 1314, 1318, 1322 – Chemistry/Endocrinology/Therapeutic Drugs (CET)</li> <li>Module 1260 – Cardiac Markers (IE)</li> </ol>
	<ul style="list-style-type: none"> <li>Total Bilirubin</li> </ul>	<ol style="list-style-type: none"> <li>Modules 1310, 1314, 1318, 1322 – Chemistry/Endocrinology/Therapeutic Drugs (CET)</li> <li>Modules 1430 – Elevated Bilirubin (NB)</li> </ol>
	<ul style="list-style-type: none"> <li>hCG, serum</li> </ul>	<ol style="list-style-type: none"> <li>Modules 1310, 1314, 1318, 1322 – Chemistry/Endocrinology/Therapeutic Drugs (CET)</li> <li>Module 1480, 1495 – hCG serum, Qualitative (HCG)</li> </ol>
<b>Hematology &amp; Coagulation</b>	<ul style="list-style-type: none"> <li>Hemoglobin</li> <li>Hematocrit</li> </ul>	<ol style="list-style-type: none"> <li>Hematology (AF, AS, AT): Modules 2270, 2285, 2290, 2190, 2200</li> <li>Module 1570 – Blood Gas Hemoglobin/Hematocrit Add on (BGH)</li> <li>Module 1330 – CO-Oximetry (CO)</li> <li>Module 1345 – i-STAT Chemistries PLUS (BGB)</li> </ol>
	<ul style="list-style-type: none"> <li>Protime/INR</li> </ul>	<ol style="list-style-type: none"> <li>Module 2060 – Coagulation Basic (CA)</li> <li>Module 2370 – Protime/INR – i-STAT/CoaguSense (PRC)</li> <li>Module 2350 – Protime/INR – CoaguChek XS/Plus/Pro (PXS)</li> </ol>
<b>Immunology*</b>	<ul style="list-style-type: none"> <li>Anti-HIV</li> <li>Anti-HIV/p24 Antigen (not differentiated)</li> </ul>	<ol style="list-style-type: none"> <li>Anti-HIV/p24 (not differentiated)</li> <li>Anti-HIV</li> </ol>
	<ul style="list-style-type: none"> <li>Anti-Hbc, IgM</li> <li>Anti-Hbc, total</li> </ul>	<ol style="list-style-type: none"> <li>Anti-Hbc, IgM</li> <li>Anti-Hbc, total</li> </ol>





## A NOTE FOR CAP ACCREDITED CUSTOMERS

We are accepted by the CAP Laboratory Accreditation Program (LAP) to fulfill PT requirements for most analytes and procedures. Analytes and procedures not accepted are indicated in this catalog with an asterisk (\*) after the analyte name.

Analytes noted as educational in the catalog will not fulfill CAP PT requirements. Enrollment in a CAP approved PT program is required for these analytes.

You can determine if enrollment in PT is required by reviewing the information on your CAP Laboratory Activity Menu report. You should carefully review this information before placing your order with us.

# PT PRODUCTS

**PRIMARY PRODUCTS** include one set of samples and reporting for one set of results per shipment unless otherwise specified. Analytes and procedures listed under the Regulated column are regulated under CLIA. Add-on products may only be ordered in conjunction with specific primary products.

**QUALITY EVALUATION (QE) PRODUCTS** include one set of samples and reporting for one set of results per shipment unless otherwise specified. These products can only be ordered in conjunction with a corresponding primary product and may be ordered in multiples. Result sets reported for any QE products may be ordered for QA purposes, to test a secondary method, or for additional sample volume. Contact WSLH PT for QE products not listed.

**ADDITIONAL PRODUCTS** include Assayed Sample Sets, Calibration Verification/Linearity Products, Off-Schedule Proficiency Testing, and Online Training and Competency.

## NEW FOR 2026

PAGE	PRODUCT NAME
------	--------------

15	Chemistry - Waived Lipids and Glucose (WCL)
24	Hematology - PixCell (PIX)
36	Bacteriology - Limited (MBC)
36	Bacteriology - Comprehensive (MBC)
37	Bacteriology - Blood Culture (MBC)
49	SARS-CoV2/Flu Antigen Combo - Waived (CFW)
54	Urine hCG (UH)



### Blood Gases / Electrolytes / Metabolites (BG)

Single set of five, 3mL aqueous samples compatible with most blood gas instruments including ABL, Cobas, EPOC, GEM, i-STAT, OPTI, RAPIDLab, RAPIDPoint and OTHER systems.

	CLIA REGULATED		UNREGULATED	
ANALYTES	<ul style="list-style-type: none"> <li>Carbon dioxide, total</li> <li>Chloride</li> <li>Creatinine</li> <li>Glucose</li> <li>pCO<sub>2</sub></li> </ul>	<ul style="list-style-type: none"> <li>pH</li> <li>pO<sub>2</sub></li> <li>Potassium</li> <li>Sodium</li> <li>Urea nitrogen (BUN)</li> </ul>	<ul style="list-style-type: none"> <li>Ionized calcium</li> <li>Ionized magnesium *</li> <li>Lactate</li> </ul>	
2026 Ship Dates	March 2	June 22	October 26	Three shipments per year Five samples per shipment

Item PT01050

QE Product Item PT01060

#### CLIA REGULATED ANALYTES SCORE TRANSMISSION

If reporting any of the following analytes in multiple modules, score transmission order can be found on page 6.

Chloride • CO<sub>2</sub> • Creatinine • Glucose • Potassium • Sodium • Urea Nitrogen (BUN)

\* Analyte(s) not yet accepted by the CAP Laboratory Accreditation Program

### Blood Gas Hemoglobin / Hematocrit (BGH), add-on to BG

Single set of five, 2.5mL aqueous samples. This product can be ordered in conjunction with BG (above).

- i-STAT users are encouraged to order BGB (below) instead of BG with BGH to save money and cartridges.
- IL GEM and ABL90 FLEX are not compatible; these users should order CO-Oximetry (page 10).

	CLIA REGULATED		UNREGULATED	
ANALYTES	<ul style="list-style-type: none"> <li>Hematocrit</li> </ul>	<ul style="list-style-type: none"> <li>Hemoglobin</li> </ul>		
2026 Ship Dates	March 2	June 22	October 26	Three shipments per year Five samples per shipment

Add-on to BG Item PT01570

QE Product Item PT01580

#### CLIA REGULATED ANALYTES SCORE TRANSMISSION

If reporting any of the following analytes in multiple modules, score transmission order can be found on page 6.

Hematocrit • Hemoglobin

### i-STAT Chemistries PLUS (BGB)

2.5mL BLUE aqueous samples intended for use on i-STAT systems. Includes Hemoglobin and Hematocrit. Single set of five samples.

	CLIA REGULATED		UNREGULATED	
ANALYTES	<ul style="list-style-type: none"> <li>Carbon dioxide, total</li> <li>Chloride</li> <li>Creatinine</li> <li>Glucose</li> <li>Hematocrit</li> <li>Hemoglobin</li> </ul>	<ul style="list-style-type: none"> <li>pCO<sub>2</sub></li> <li>pH</li> <li>pO<sub>2</sub></li> <li>Potassium</li> <li>Sodium</li> <li>Urea nitrogen (BUN)</li> </ul>	<ul style="list-style-type: none"> <li>Ionized calcium</li> <li>Lactate</li> </ul>	
2026 Ship Dates	March 2	June 22	October 26	Three shipments per year Five samples per shipment

Item PT01345

QE Product Item PT01347

#### CLIA REGULATED ANALYTES SCORE TRANSMISSION

If reporting any of the following analytes in multiple modules, score transmission order can be found on page 6.

Chloride, • CO<sub>2</sub> • Creatinine • Glucose • Hematocrit • Hemoglobin • Potassium • Sodium • Urea Nitrogen (BUN)

# CHEMISTRY

## ▲ Blood Gas / Oximetry

### CO-Oximetry (CO)

2mL samples of stabilized hemoglobin solution.

	CLIA REGULATED		UNREGULATED	
ANALYTES	• Hematocrit	• Hemoglobin, total	• Carboxyhemoglobin • Methemoglobin	• Oxyhemoglobin
2026 Ship Dates	March 2	June 22	October 26	Three shipments per year Five samples per shipment

Item PT01330  
QE Product Item PT01340

**CLIA REGULATED ANALYTES SCORE TRANSMISSION**  
If reporting any of the following analytes in multiple modules, score transmission order can be found on page 6.  
Hematocrit • Hemoglobin

### i-STAT Chemistries - Waived Methods (BGW)

2.5mL aqueous samples intended for waived i-STAT cartridges. Laboratories using non-waived methods should refer to BGB or BG products on page 9.

	CLIA REGULATED		UNREGULATED
ANALYTES			• Creatinine
2026 Ship Dates	March 2	June 22	Two shipments per year Three samples per shipment

Item PT01400  
QE Product Item PT01425





## Alcohol/Ketones, serum (AM)

Item PT01000  
QE Product Item PT01010

2mL liquid samples. Beta-hydroxybutyrate is compatible with instrumentation using Stanbio reagent as well as with POC meters such as Abbott Xceed Pro and Stanbio STAT-site M.

	CLIA REGULATED		UNREGULATED	
ANALYTES	• Alcohol (ethanol)		• Acetone (qualitative) • Acetone (semi-quantitative) • Beta-hydroxybutyrate	
2026 Ship Dates	February 16	May 18	September 28	Three shipments per year Five samples per shipment

## Ammonia (NH)

Item PT01020  
QE Product Item PT01045

2mL liquid samples.

	CLIA REGULATED		UNREGULATED	
ANALYTES			• Ammonia	
2026 Ship Dates	February 16	September 28		Two shipments per year Three samples per shipment

## Bilirubin - Elevated (NB)

Item PT01430  
QE Product Item PT01440

1mL liquid samples containing elevated levels of bilirubin similar to those found in neonates and liver disease.

	CLIA REGULATED		UNREGULATED	
ANALYTES	• Bilirubin, total		• Bilirubin, direct	
2026 Ship Dates	February 16	May 18	September 28	Three shipments per year Five samples per shipment

### CLIA REGULATED ANALYTES SCORE TRANSMISSION

If reporting any of the following analytes in multiple modules, score transmission order can be found on page 6.  
Bilirubin, total

# CHEMISTRY

## ▲ General

### Blood Lead - 5 Samples (PB)

1mL whole blood samples.

Item PT01080  
QE Product Item PT01085

ANALYTES	CLIA REGULATED		UNREGULATED	
	• Blood lead			
<b>2026 Ship Dates</b>	February 16	May 18	September 28	Three shipments per year Five samples per shipment

### Blood Lead - 3 Samples (BL)

1mL whole blood samples.

Item PT01070  
QE Product Item PT01077

ANALYTES	CLIA REGULATED		UNREGULATED	
			• Blood lead	
<b>2026 Ship Dates</b>	February 16	September 28	Two shipments per year Three samples per shipment	

### Body Fluid Chemistry (PC)

3mL liquid samples intended to simulate pleural, peritoneal, and miscellaneous body fluids.

Item PT01120  
QE Product Item PT01145

For spinal fluid, see SF product on page 17.  
For urine, see CU on page 18.

ANALYTES	CLIA REGULATED		UNREGULATED	
			<ul style="list-style-type: none"> <li>• Albumin</li> <li>• Amylase</li> <li>• Cholesterol</li> <li>• Creatinine</li> <li>• Glucose</li> </ul>	<ul style="list-style-type: none"> <li>• LDH</li> <li>• pH (quantitative)</li> <li>• Protein</li> <li>• Triglycerides</li> </ul>
<b>2026 Ship Dates</b>	February 16	September 28	Two shipments per year Three samples per shipment	

### Body Fluid pH - Visual (PH)

0.5mL liquid samples intended for pH measurement by color comparison methods including amniotic and miscellaneous body fluid pH measurement. Samples are compatible with non-nitrazine and nitrazine test strips, swabs, and paper.

Item PT01150  
QE Product Item PT01175

For urine pH, see UR product on page 54.  
For Amniotic Fluid Detection by protein methods, see AE product on page 52

ANALYTES	CLIA REGULATED		UNREGULATED	
			<ul style="list-style-type: none"> <li>• pH (color comparison)</li> <li>• pH interpretation (ruptured, not ruptured)</li> </ul>	
<b>2026 Ship Dates</b>	February 16	September 28	Two shipments per year Three samples per shipment	



## Cardiac Markers - 5 Samples (IE)

1.5mL liquid samples. Compatible with automated methods such as Abbott i-STAT, Triage, Architect, Beckman Coulter, Roche, Siemens, and Vitros.

ANALYTES	CLIA REGULATED		UNREGULATED	
	<ul style="list-style-type: none"> <li>• BNP</li> <li>• CK-MB</li> <li>• CK, total</li> </ul>	<ul style="list-style-type: none"> <li>• hs-CRP</li> <li>• proBNP</li> <li>• Troponin I</li> </ul>	<ul style="list-style-type: none"> <li>• D-dimer (Triage only)</li> <li>• Myoglobin</li> </ul>	<ul style="list-style-type: none"> <li>• Troponin I, high sensitivity *</li> <li>• Troponin T, high sensitivity</li> </ul>
<b>2026 Ship Dates</b>	February 16	May 18	September 28	Three shipments per year Five samples per shipment

Item PT01260  
QE Product Item PT01270

### CLIA REGULATED ANALYTES SCORE TRANSMISSION

If reporting any of the following analytes in multiple modules, score transmission order can be found on page 6.  
Creatine Kinase (CK), total

For CRP methods screening for non-specific inflammatory disease, see XP product on page 28.

D-dimer in this module is for laboratories using the Triage. Other instrumentation, see DD product on page 20.

CAP accredited labs must test five samples for non-waived methods except for D-dimer and Myoglobin.

\* Analyte(s) not yet accepted by the CAP Laboratory Accreditation Program

## Cardiac Markers - 3 Samples (TM)

1.5mL liquid samples. Compatible with automated methods such as Abbott i-STAT, Triage, Architect, Beckman Coulter, Roche, Siemens, and Vitros.

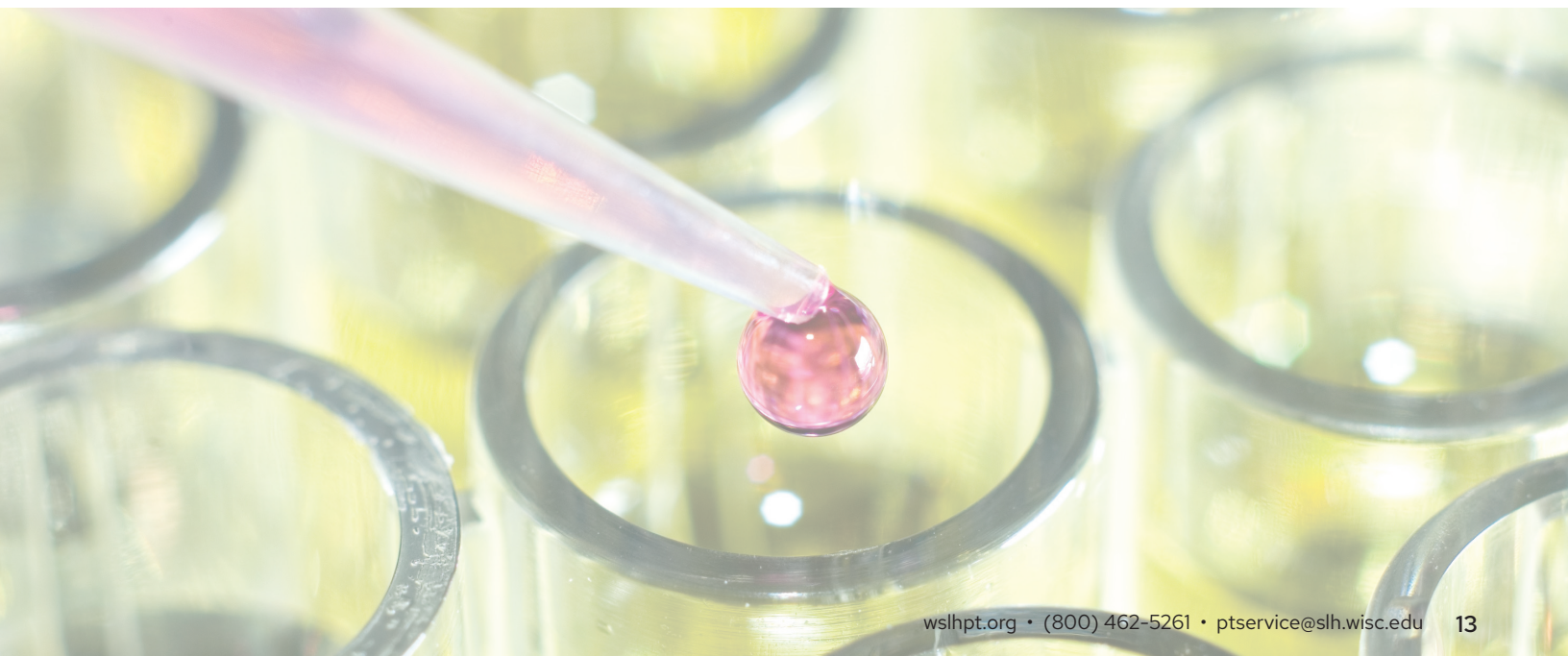
ANALYTES	CLIA REGULATED		UNREGULATED	
			<ul style="list-style-type: none"> <li>• BNP (waived only)</li> <li>• D-dimer (Triage only)</li> <li>• Myoglobin</li> </ul>	<ul style="list-style-type: none"> <li>• Troponin I, high sensitivity</li> <li>• Troponin T, high sensitivity</li> </ul>
<b>2026 Ship Dates</b>	February 16	September 28	Two shipments per year Three samples per shipment	

Item PT01230  
QE Product Item PT01255

For CRP methods screening for non-specific inflammatory disease, see XP product on page 28.

D-dimer in this module is for laboratories using the Triage. Other instrumentation, see DD product on page 20.

CAP accredited labs must test five samples for non-waived methods except for D-dimer and Myoglobin.



# CHEMISTRY

## ▲ General

### Chemistry/Endocrinology/Therapeutic Drugs (CET)

5mL liquid samples.

	CLIA REGULATED	UNREGULATED	
ANALYTES	<ul style="list-style-type: none"><li>• Acetaminophen</li><li>• ALT</li><li>• Albumin</li><li>• ALKP</li><li>• Amylase</li><li>• AST</li><li>• Bilirubin, total</li><li>• Calcium, total</li><li>• Chloride</li><li>• Cholesterol, HDL</li><li>• Cholesterol, LDL (measured)</li><li>• Cholesterol, total</li><li>• CO<sub>2</sub></li><li>• Creatine Kinase (CK)</li><li>• Creatinine</li><li>• Digoxin</li><li>• GGT</li><li>• Glucose</li></ul>	<ul style="list-style-type: none"><li>• hCG, quantitative (serum)</li><li>• Iron, total</li><li>• LDH</li><li>• Lithium</li><li>• Magnesium</li><li>• Phosphorus</li><li>• Potassium</li><li>• Protein, total</li><li>• Salicylate</li><li>• Sodium</li><li>• TSH</li><li>• T4, free (FT4)</li><li>• TIBC, measured</li><li>• Triglycerides</li><li>• Urea nitrogen (BUN)</li><li>• Uric acid</li><li>• Valproic acid</li><li>• Vancomycin</li></ul>	<ul style="list-style-type: none"><li>• Bilirubin, direct</li><li>• Cholesterol, LDL (calculated)</li><li>• Lactate</li><li>• Lipase</li><li>• Osmolality</li><li>• T3, free (FT3)</li><li>• TIBC, calculated</li><li>• UIBC *</li></ul>

#### CET Educational Analytes

The following analytes are offered as educational challenges only. CLIA regulated laboratories must enroll with another PT provider in order to meet CLIA regulations for these analytes.

	EDUCATIONAL
ANALYTES	<ul style="list-style-type: none"> <li>• <i>Alpha-fetoprotein</i></li> <li>• <i>Carbamazepine</i></li> <li>• <i>Cortisol</i></li> <li>• <i>Gentamicin</i></li> <li>• <i>Phenobarbital</i></li> <li>• <i>Phenytoin</i></li> <li>• <i>T3, total</i></li> <li>• <i>T4, total</i></li> <li>• <i>T-Uptake</i></li> <li>• <i>Theophylline</i></li> <li>• <i>Tobramycin</i></li> </ul>
<b>2026 Ship Dates</b>	February 16      May 18      September 28      Three shipments per year Five samples per shipment

Order by number of analytes reported

1-11 - Item PT01310  
12-21 - Item PT01314  
22-30 - Item PT01318  
31+ - Item PT01322  
QE Product Item PT01326

#### CLIA REGULATED ANALYTES SCORE TRANSMISSION

If reporting any of the following analytes in multiple modules, score transmission order can be found on page 6.

Bilirubin, total • Chloride • CO<sub>2</sub> • Creatine Kinase (CK) • Creatinine • Glucose • hCG, serum • Potassium • Sodium • Urea Nitrogen (BUN)

i-STAT users may enroll in CET for hCG quantitative. For i-STAT chemistry analytes, see BG, BGB, or BGW products on page 9, 10.

\* Analyte(s) not yet accepted by the CAP Laboratory Accreditation Program

### hCG, serum - Qualitative (HCG)

1mL liquid samples.

	CLIA REGULATED	UNREGULATED
ANALYTES	<ul style="list-style-type: none"> <li>• hCG, qualitative (serum)</li> </ul>	
<b>2026 Ship Dates</b>	February 16      May 18      September 28      Three shipments per year Five samples per shipment	

Item PT01480  
Add-on to any CET Product Item PT01495  
QE Product Item PT01490

#### CLIA REGULATED ANALYTES SCORE TRANSMISSION

If reporting any of the following analytes in multiple modules, score transmission order can be found on page 6.

hCG, serum

## Chemistry - Waived Methods (WC)

5mL liquid samples intended for Abaxis Piccolo analyzer (waived cartridges).

- Abaxis Piccolo non-waived cartridges order CET product on the previous page.
- Cholestech LDX, CardioChek, and Roche Accutrend Plus analyzers order WCL product below.

Item PT01282  
QE Product Item PT01284

For i-STAT chemistry waived cartridges,  
see BGW product on page 10.

	CLIA REGULATED	UNREGULATED
ANALYTES		<ul style="list-style-type: none"> <li>• ALT</li> <li>• Albumin</li> <li>• ALKP</li> <li>• Amylase</li> <li>• AST</li> <li>• Bilirubin, total</li> <li>• Calcium, total</li> <li>• CO<sub>2</sub></li> <li>• Chloride</li> <li>• Cholesterol, HDL</li> <li>• Cholesterol, LDL (calculated)</li> <li>• Cholesterol, total</li> <li>• Creatine Kinase (CK)</li> <li>• Creatinine</li> <li>• GGT</li> <li>• Glucose</li> <li>• Phosphorus</li> <li>• Potassium</li> <li>• Protein, total</li> <li>• Sodium</li> <li>• Triglycerides</li> <li>• Urea nitrogen (BUN)</li> <li>• Uric acid</li> </ul>
2026 Ship Dates	February 16	September 28
Two shipments per year Three samples per shipment		

## Chemistry - Waived Lipids and Glucose (WCL)

1mL liquid samples intended for Cholestech LDX and CardioChek waived analyzers.

Item PT01288  
QE Product Item PT01289

For CardioChek eGLU (glucose electrochemical test strips), see WBG product below.

	CLIA REGULATED	UNREGULATED
ANALYTES		<ul style="list-style-type: none"> <li>• Cholesterol, HDL</li> <li>• Cholesterol, LDL (calculated)</li> <li>• Cholesterol, total</li> <li>• Glucose</li> <li>• Triglycerides</li> </ul>
2026 Ship Dates	April 6	October 12
Two shipments per year Three samples per shipment		

**NEW!**

## Glucose Whole Blood (WBG)

Whole blood samples intended for waived glucose meters. Samples are compatible with blood glucose meters and instruments, including HemoCue glucose systems, used for ancillary/point of care testing.

Item PT01880  
QE Product Item PT01895  
Additional Samples Item PT01884

QE product allows reporting for up to 20  
result sets.

Additional Samples product is samples  
only, no result reporting.

WBG product also available in POC  
Package, see page 55.

	CLIA REGULATED	UNREGULATED
ANALYTES		<ul style="list-style-type: none"> <li>• Whole Blood Glucose (meters)</li> <li>• Whole Blood Glucose (instruments)</li> </ul>
2026 Ship Dates	April 6	October 12
Two shipments per year Three samples per shipment		



# CHEMISTRY

## ▲ General

### Hemoglobin A1c (GHR)

1mL whole blood samples. These samples are NOT compatible with the Afinion analyzer, see GHRA product below.

Item PT01524  
QE Product Item PT01529

	CLIA REGULATED		UNREGULATED	
ANALYTES	• Hemoglobin A1c			
2026 Ship Dates	February 16	May 18	September 28	Three shipments per year Five samples per shipment

### Hemoglobin A1c - Waived Methods (GH)

1mL whole blood samples. These samples are NOT compatible with the Afinion analyzer, see GHA product below.

Item PT01532  
QE Product Item PT01533

	CLIA REGULATED		UNREGULATED	
ANALYTES			• Hemoglobin A1c	
2026 Ship Dates	April 6	October 12		Two shipments per year Three samples per shipment

### Hemoglobin A1c - Afinion (GHRA)

0.5mL whole blood samples intended for use with the Afinion using the Afinion Dx moderately complex cartridge.

Item PT01525  
QE Product Item PT01527

	CLIA REGULATED		UNREGULATED	
ANALYTES	• Hemoglobin A1c			
2026 Ship Dates	February 16	May 18	September 28	Three shipments per year Five samples per shipment

### Hemoglobin A1c - Afinion - Waived Methods (GHA)

0.5mL whole blood samples intended for use with the Afinion analyzer. Afinion analyzers using the Afinion Dx moderately complex cartridge must enroll in the 5 sample GHRA program above.

Item PT01534  
QE Product Item PT01535

	CLIA REGULATED		UNREGULATED	
ANALYTES			• Hemoglobin A1c	
2026 Ship Dates	April 6	October 12		Two shipments per year Three samples per shipment

**Immunoassay Chemistry (CS)**

5mL liquid samples.

Item PT01683  
QE Product Item PT01684

CLIA REGULATED		UNREGULATED	
ANALYTES	<ul style="list-style-type: none"> <li>• Estradiol</li> <li>• Ferritin</li> <li>• Folate</li> <li>• FSH</li> <li>• LH</li> <li>• Progesterone</li> </ul>	<ul style="list-style-type: none"> <li>• Prolactin</li> <li>• PSA, total</li> <li>• Testosterone, total</li> <li>• Vitamin B12</li> </ul>	<ul style="list-style-type: none"> <li>• DHEA Sulfate *</li> <li>• Homocysteine *</li> <li>• Prealbumin *</li> <li>• Transferrin</li> </ul>
<b>Educational Analyte</b> CLIA regulated laboratories must enroll with another PT provider in order to meet CLIA regulations for CEA.			
EDUCATIONAL			
ANALYTES	• CEA		
2026 Ship Dates	February 16	May 18	September 28
Three shipments per year Five samples per shipment			

\* Analyte(s) not yet accepted by the  
CAP Laboratory Accreditation Program**Immunoassay Chemistry B (CSB)**

Lyophilized serum samples. A 2.0mL class A volumetric pipette and reagent-grade water are recommended for reconstitution.

Item PT01712  
QE Product Item PT01713

CLIA REGULATED		UNREGULATED	
ANALYTES	• PTH, intact	<ul style="list-style-type: none"> <li>• 25-OH Vitamin D, total</li> <li>• C-peptide *</li> <li>• Insulin *</li> </ul>	
2026 Ship Dates	February 16	May 18	September 28
Three shipments per year Five samples per shipment			

\* Analyte(s) not yet accepted by the  
CAP Laboratory Accreditation Program**Procalcitonin (PCT)**

Lyophilized serum samples. A 2.0mL class A volumetric pipette and reagent-grade water are recommended for reconstitution.

Item PT01900  
QE Product Item PT01905

CLIA REGULATED		UNREGULATED	
ANALYTES		• Procalcitonin	
2026 Ship Dates	February 16	September 28	
Two shipments per year Three samples per shipment			

**Spinal Fluid Chemistry (SF)**

2mL liquid samples.

Item PT01720  
Add-on to PC Product Item PT01722  
QE Product Item PT01745

CLIA REGULATED		UNREGULATED	
ANALYTES		<ul style="list-style-type: none"> <li>• Glucose</li> <li>• Lactic acid *</li> </ul>	• Protein
2026 Ship Dates	February 16	September 28	
Two shipments per year Three samples per shipment			

\* Analyte(s) not yet accepted by the  
CAP Laboratory Accreditation Program

# CHEMISTRY

## ▲ General

### Tumor Markers (MT)

2mL liquid samples.

ANALYTES	EDUCATIONAL			
	• Beta-2 Microglobulin	• CA 15-3 • CA 19-9	• CA 27.29 • CA 125	• PSA, free
<b>2026 Ship Dates</b>	February 16	May 18	September 28	Three shipments per year Five samples per shipment

Item PT01752  
QE Product Item PT01753

+EDUCATIONAL: Scores not sent to CMS or other accrediting agency. Labs must enroll with another PT provider to meet CLIA regulations for CLIA regulated analytes.

CEA and PSA, total are available under the Immunoassay Chemistry (CS) product on page 17.

### Urine Chemistry (CU)

10mL liquid samples. These samples are NOT compatible with the Afinion analyzer, see ACR product below.

ANALYTES	CLIA REGULATED	UNREGULATED	
		<ul style="list-style-type: none"> <li>• A/C ratio, quantitative</li> <li>• A/C ratio, semi-quantitative</li> <li>• Amylase</li> <li>• Calcium</li> <li>• Chloride</li> <li>• Creatinine, quantitative</li> <li>• Creatinine, semi-quantitative *</li> <li>• Glucose</li> <li>• Magnesium</li> </ul>	<ul style="list-style-type: none"> <li>• Microalbumin, quantitative</li> <li>• Microalbumin, semi-quantitative *</li> <li>• Osmolality</li> <li>• Phosphorus</li> <li>• Potassium</li> <li>• Protein</li> <li>• Sodium</li> <li>• Urea nitrogen</li> <li>• Uric acid</li> </ul>
<b>2026 Ship Dates</b>	February 16	September 28	Two shipments per year Three samples per shipment

Order by number of analytes reported

1-3 - Item PT01780  
QE Product 1-3 - Item PT01785  
4-10 - Item PT01786  
QE Product 4-10 - Item PT01791  
11+ - Item PT01792  
QE Product 11+ - Item PT01797

\* Analyte(s) not yet accepted by the CAP Laboratory Accreditation Program

### Urine Chemistry - Afinion (ACR)

3mL liquid samples intended for use with the Afinion analyzer.

ANALYTES	CLIA REGULATED	UNREGULATED	
		<ul style="list-style-type: none"> <li>• A/C ratio</li> <li>• Creatinine *</li> </ul>	<ul style="list-style-type: none"> <li>• Microalbumin</li> </ul>
<b>2026 Ship Dates</b>	February 16	September 28	Two shipments per year Three samples per shipment

\* Analyte(s) not yet accepted by the CAP Laboratory Accreditation Program



## Urine Drug Adulteration Test (UDA)

10mL liquid samples for use with urine adulterant detection methods.

Item PT01950  
QE Product Item PT01955

ANALYTES	CLIA REGULATED		UNREGULATED	
			<ul style="list-style-type: none"> <li>• Creatinine</li> <li>• Nitrites</li> <li>• Oxidants</li> </ul>	<ul style="list-style-type: none"> <li>• pH</li> <li>• Specific gravity</li> </ul>
<b>2026 Ship Dates</b>	February 16	May 18	September 28	Three shipments per year Two samples per shipment

## Urine Drug Screen (UD)

10mL liquid samples intended for the qualitative detection of drugs using urine immunoassay screening procedures.

Item PT01810  
QE Product Item PT01835

ANALYTES	CLIA REGULATED		UNREGULATED	
			<ul style="list-style-type: none"> <li>• 6-Acetylmorphine (6-AM)</li> <li>• Amphetamines</li> <li>• Barbiturates</li> <li>• Benzodiazepines</li> <li>• Buprenorphine</li> <li>• Cannabinoids (THC)</li> <li>• Cocaine metabolites</li> <li>• Cotinine</li> <li>• EDDP</li> <li>• Ethanol (Alcohol)</li> <li>• Fentanyl</li> </ul>	<ul style="list-style-type: none"> <li>• Hydrocodone *</li> <li>• MDMA (Ecstasy)</li> <li>• Methadone</li> <li>• Methamphetamines</li> <li>• Methaqualone</li> <li>• Opiates</li> <li>• Oxycodone</li> <li>• Phencyclidine (PCP)</li> <li>• Propoxyphene</li> <li>• Tramadol *</li> <li>• Tricyclic antidepressants</li> </ul>
<b>2026 Ship Dates</b>	February 16	May 18	September 28	Three shipments per year Two samples per shipment

\* Laboratories accredited by CAP contact WSLH PT about acceptance for these analytes.

## Urine Drug Screen - Ethyl Glucuronide (ETG)

5mL liquid samples intended for the qualitative detection of EtG in urine.

Item PT01980

ANALYTES	CLIA REGULATED		UNREGULATED	
			• Ethyl Glucuronide (EtG)	
<b>2026 Ship Dates</b>	February 16	May 18	September 28	Three shipments per year Two samples per shipment



# COAGULATION

## Activated Clotting Time (CT)

Lyophilized samples with paired diluents, calcium chloride solutions (activator), and method-differentiated handling instructions. Compatible with Hemochron, HemoTec, i-STAT, Medtronic HMS and OTHER methods.

Item PT02030  
QE Product Item PT02052

ANALYTES	CLIA REGULATED		UNREGULATED
			• Activated clotting time (ACT)
2026 Ship Dates	February 2	August 31	Two shipments per year Three samples per shipment

## Coagulation - Basic (CA)

Lyophilized plasma samples. Use of a 1.0mL class A volumetric pipette and reagent-grade water are recommended for reconstitution. NOT compatible with whole blood systems (i-STAT, ITC, CoaguChek, or Coag-Sense). INR Calculation "dry exercise" is available for CAP-accredited labs.

Item PT02060  
QE Product Item PT02070

ANALYTES	CLIA REGULATED		UNREGULATED
	• Activated partial thromboplastin time (APTT)	• Protime (PT) • INR	
2025 Ship Dates	February 2	June 1	August 31 Three shipments per year Five samples per shipment

**CLIA REGULATED ANALYTES SCORE TRANSMISSION**  
If reporting any of the following analytes in multiple modules, score transmission order can be found on page 6.  
Protime/INR

## D-dimer (DD)

1.0mL liquid samples. Compatible with most D-dimer kits including Sysmex CA and CS, Triage, Stago, and OTHER methods.

Item PT02080  
QE Product Item PT02105

ANALYTES	CLIA REGULATED		UNREGULATED
			• D-dimer, quantitative
2026 Ship Dates	February 2	August 31	Two shipments per year Three samples per shipment

Customers using Triage for cardiac markers see IE or TM product on page 13.

# COAGULATION

## Protime / INR - Whole Blood, CoaguChek XS (PXS)

Lyophilized samples intended for non-waived Roche CoaguChek XS systems. Also available to waived system users wanting more challenges per year. Waived system users reporting only INR may consider CXSW product.

ANALYTES	CLIA REGULATED		UNREGULATED	
	• Protime (PT)	• INR		
2026 Ship Dates	February 2	June 1	August 31	Three shipments per year Five samples per shipment

Item PT02350  
QE Product Item PT02360

**CLIA REGULATED ANALYTES SCORE TRANSMISSION**  
If reporting any of the following analytes in multiple modules, score transmission order can be found on page 6.  
Protime/INR

## INR - CoaguChek - Waived Methods (CXSW)

Lyophilized samples for CoaguChek XS or CoaguChek XS Plus (waived use) ONLY.

ANALYTES	CLIA REGULATED		UNREGULATED	
			• INR	
2026 Ship Dates	February 2	August 31		Two shipments per year Three samples per shipment

Item PT02320  
QE Product Item PT02345

## Protime / INR - Whole Blood, i-STAT and Coag-Sense (PRC)

Lyophilized samples intended for i-STAT systems; i-STAT users may report both Protime and INR for proficiency testing purposes. Also compatible with Coag-Sense systems where non-waived users may report both Protime and INR. Coag-Sense waived system users reporting only INR may consider CW product.

ANALYTES	CLIA REGULATED		UNREGULATED	
	• Protime (PT)	• INR		
2026 Ship Dates	February 2	June 1	August 31	Three shipments per year Five samples per shipment

Item PT02370  
QE Product Item PT02380

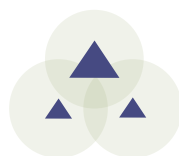
**CLIA REGULATED ANALYTES SCORE TRANSMISSION**  
If reporting any of the following analytes in multiple modules, score transmission order can be found on page 6.  
Protime/INR

## INR - Coag-Sense - Waived Methods (CW)

Lyophilized samples intended for Coag-Sense (waived use).

ANALYTES	CLIA REGULATED		UNREGULATED	
			• INR	
2026 Ship Dates	February 2	August 31		Two shipments per year Three samples per shipment

Item PT02310  
QE Product Item PT02315





# HEMATOLOGY

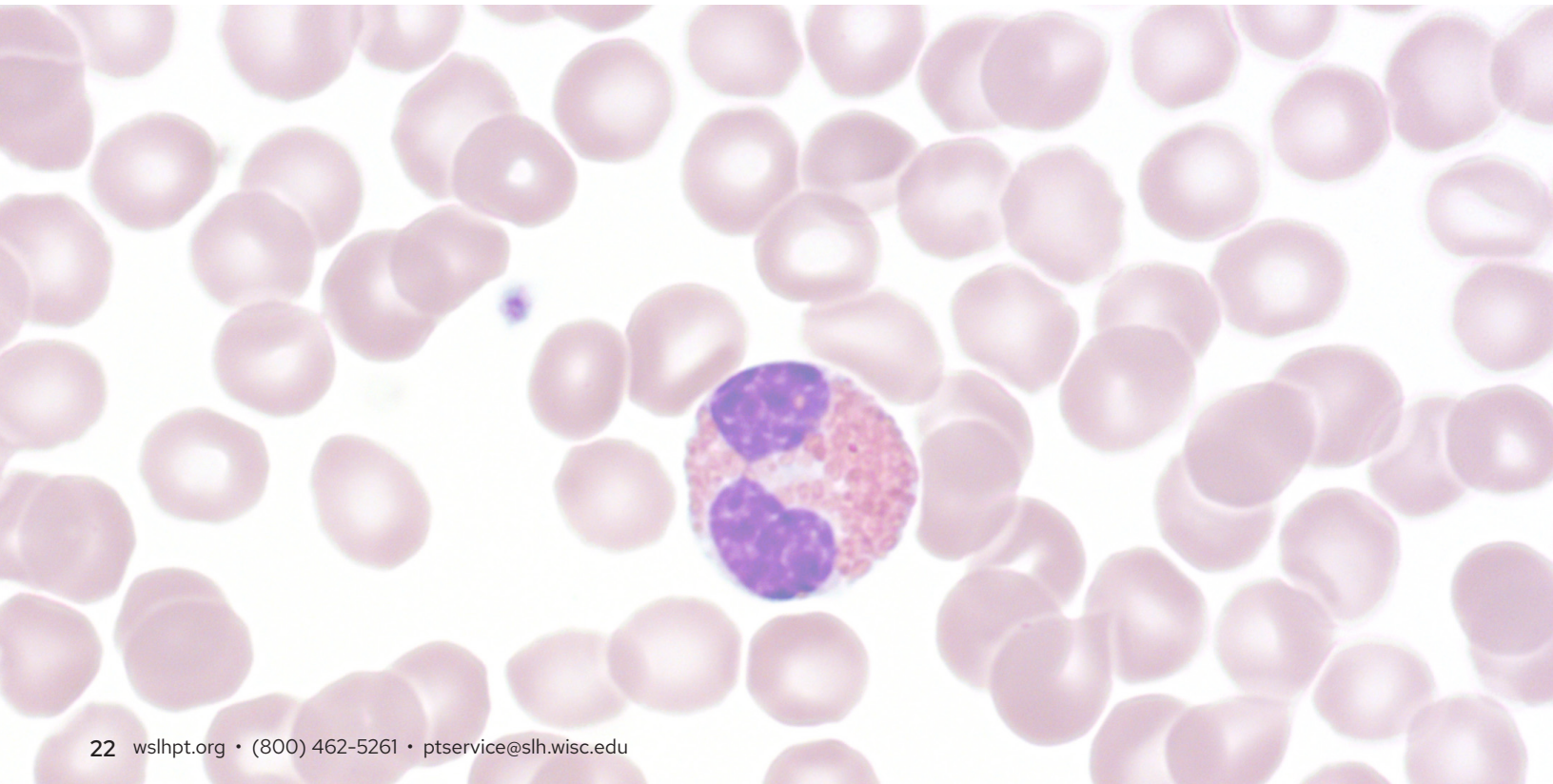
Hematology samples are instrument specific.

Please use the table below to choose the correct sample/instrument combination.

	CBC OR CBC WITH AUTO DIFF						RETICULOCYTES	
	AF3	AF4	AF5	AS	AT	PIX	RTB	RTS
Abbott CELL-DYN 1800, Emerald (Not compatible with Emerald 22)					X			
ABX Micros 60 and ES 60					X			
Beckman Coulter AcT diff/diff2					X			
Beckman Coulter DxH 500, DxH 520, DxH 560	X							
Beckman Coulter DxH 600, DxH 690T, DxH 800, DxH 900		X					X	
Drew Scientific D3					X			
Medonic M series, Medonic CA-620					X			
PixCell Hemoscreen						X		
Siemens ADVIA 120							X	
Sysmex XS1000i			X					
Sysmex series: XN, XN-L			X					X
Sysmex KX-21/21N, poch 100i, XP-300, XQ-320				X				

INSTRUMENTS

HEMATOLOGY



# HEMATOLOGY

## Hematology - Comprehensive (AF)

Whole blood samples for automated instruments with a 5-6 part differential.

ANALYTES	CLIA REGULATED		UNREGULATED	
	<ul style="list-style-type: none"> <li>Erythrocyte count (RBC)</li> <li>Hematocrit</li> <li>Hemoglobin</li> </ul>	<ul style="list-style-type: none"> <li>Leukocyte count (WBC)</li> <li>Platelet count</li> <li>WBC differential, automated</li> </ul>	<ul style="list-style-type: none"> <li>IG# and IG% (AF5)</li> <li>IPF (AF5)</li> <li>MCH and MCHC (AF5)</li> <li>MCV (all)</li> <li>MPV (AF4 and AF5)</li> <li>NRBC# (AF4)</li> <li>RDW (AF4)</li> <li>RDW-CV and RDW-SD (AF5)</li> </ul>	
<b>2026 Ship Dates</b>	February 2	June 1	August 31	Three shipments per year Five samples per shipment

AF3 Item PT02270  
QE Product AF3 Item PT02280  
AF4 Item PT02285  
QE Product AF4 Item PT02286  
AF5 Item PT02290  
QE Product AF5 Item PT02300

### CLIA REGULATED ANALYTES SCORE TRANSMISSION

If reporting any of the following analytes in multiple modules, score transmission order can be found on page 6.  
Hematocrit • Hemoglobin

AF Item numbers are instrument specific.  
See instrument table on page 22.

## Hematology - Limited Sysmex (AS)

Whole blood samples for Sysmex instruments with a 2-3 part differential.

ANALYTES	CLIA REGULATED		UNREGULATED	
	<ul style="list-style-type: none"> <li>Erythrocyte count (RBC)</li> <li>Hematocrit</li> <li>Hemoglobin</li> </ul>	<ul style="list-style-type: none"> <li>Leukocyte count (WBC)</li> <li>Platelet count</li> <li>WBC differential, automated</li> </ul>	<ul style="list-style-type: none"> <li>MCV</li> </ul>	
<b>2026 Ship Dates</b>	February 2	June 1	August 31	Three shipments per year Five samples per shipment

Item PT02200  
QE Product Item PT02210

### CLIA REGULATED ANALYTES SCORE TRANSMISSION

If reporting any of the following analytes in multiple modules, score transmission order can be found on page 6.  
Hematocrit • Hemoglobin

AS is instrument specific.  
See instrument table on page 22.

## Hematology - Limited (AT)

Whole blood samples for automated instruments with a 2-3 part differential or no differential.

ANALYTES	CLIA REGULATED		UNREGULATED	
	<ul style="list-style-type: none"> <li>Erythrocyte count (RBC)</li> <li>Hematocrit</li> <li>Hemoglobin</li> </ul>	<ul style="list-style-type: none"> <li>Leukocyte count (WBC)</li> <li>Platelet count</li> <li>WBC differential, automated</li> </ul>	<ul style="list-style-type: none"> <li>MCH</li> <li>MCHC</li> <li>MCV</li> <li>MPV</li> <li>RDW</li> </ul>	
<b>2026 Ship Dates</b>	February 2	June 1	August 31	Three shipments per year Five samples per shipment

Item PT02190  
QE Product Item PT02195

### CLIA REGULATED ANALYTES SCORE TRANSMISSION

If reporting any of the following analytes in multiple modules, score transmission order can be found on page 6.  
Hematocrit • Hemoglobin

AT is instrument specific.  
See instrument table on page 22.

# HEMATOLOGY

## Hematology - PixCell (PIX)

Whole blood samples for the PixCell Hemoscreen instrument with a 5 part differential.

Item PT02298  
QE Product Item PT02299

ANALYTES	CLIA REGULATED		UNREGULATED	
	<ul style="list-style-type: none"><li>Erythrocyte count (RBC)</li><li>Hematocrit</li><li>Hemoglobin</li></ul>	<ul style="list-style-type: none"><li>Leukocyte count (WBC)</li><li>Platelet count</li><li>WBC differential, automated</li></ul>	<ul style="list-style-type: none"><li>MCH</li><li>MCHC</li><li>MCV</li><li>MPV</li><li>RDW</li></ul>	
2026 Ship Dates	February 2	June 1	August 31	Three shipments per year Five samples per shipment

PIX is instrument specific.  
See instrument table on page 22.

## Hematology - Cell Identification (XI)

Seven images (paper and online versions).

Item PT02220

For laboratories reporting both an automated differential and cell identification, both scores will be transmitted to accreditation agencies.

ANALYTES	CLIA REGULATED	UNREGULATED
	<ul style="list-style-type: none"><li>Cell identification</li></ul>	<ul style="list-style-type: none"><li>Cell identification, educational</li></ul>
2026 Ship Dates	February 2	June 1
		August 31
		Three shipments per year Five regulated and two educational challenges per shipment

## Reticulocytes - Beckman Coulter (RTB)

Whole blood samples for Beckman Coulter instruments.

Item PT02442  
QE Product Item PT02444

RTB is instrument specific.  
See instrument table on page 22.

ANALYTES	CLIA REGULATED	UNREGULATED
		<ul style="list-style-type: none"><li>IRF</li><li>Reticulocyte count, absolute</li><li>Reticulocyte count, percent</li></ul>
2026 Ship Dates	February 2	August 31
		Two shipments per year Three samples per shipment

## Reticulocytes - Sysmex (RTS)

Whole blood samples for Sysmex instruments.

Item PT02432  
QE Product Item PT02434

RTS is instrument specific.  
See instrument table on page 22.

ANALYTES	CLIA REGULATED	UNREGULATED
		<ul style="list-style-type: none"><li>IRF</li><li>Reticulocyte count, absolute</li><li>Reticulocyte count, percent</li><li>Re-He</li></ul>
2026 Ship Dates	February 2	August 31
		Two shipments per year Three samples per shipment



## Erythrocyte Sedimentation Rate (ESR) Instruments

Sed Rate samples are instrument specific. Please use the table below to choose the correct sample/instrument combination.

INSTRUMENTS	SR	SRI	SRA
		X	
			X
	X		
ALCOR iSED and miniISED, Sysmex Alifax			
Polymedco Sedimat 15, ESR STAT-6, ESR STAT PLUS			
ESR-Auto Plus, Polymedco Sediplast, and all others			

## Sedimentation Rate (SR)

Whole blood samples intended for manual and automated erythrocyte sedimentation rate methods.

Item PT02450  
QE Product Item PT02465

See instrument table above.

ANALYTES	CLIA REGULATED	UNREGULATED
		• Erythrocyte sedimentation rate
2026 Ship Dates	April 6 October 12	Two shipments per year Three samples per shipment

## Sedimentation Rate - Alcor and Alifax (SRI)

Whole blood samples intended for the Alcor iSED, miniISED, and Alifax.

Item PT02520  
QE Product Item PT02525

See instrument table above.

ANALYTES	CLIA REGULATED	UNREGULATED
		• Erythrocyte sedimentation rate
2026 Ship Dates	April 6 October 12	Two shipments per year Three samples per shipment

## Sedimentation Rate - Sedimat 15, ESR STAT-6/PLUS (SRA)

Whole blood samples intended for Polymedco Sedimat 15, ESR STAT-6, and ESR STAT PLUS instruments.

Item PT02470  
QE Product Item PT02485

See instrument table above.

ANALYTES	CLIA REGULATED	UNREGULATED
		• Erythrocyte sedimentation rate
2026 Ship Dates	April 6 October 12	Two shipments per year Three samples per shipment

# HEMATOLOGY

## Hematocrit - Waived Methods (HW)

Liquid whole blood samples intended for use with waived hematocrit methods.

Item PT02150  
QE Product Item PT02175

ANALYTES	CLIA REGULATED	UNREGULATED
		• Hematocrit
2026 Ship Dates	April 6	October 12
Two shipments per year Three samples per shipment		

## Hemoglobin - Waived Methods (HWG)

1mL liquid samples intended for use with waived hemoglobin systems.

- Compatible with HemoCue Hb 201, HemoPoint H2, and most other waived hemoglobin systems.
- HemoCue Hb 301 and HemoCue Hb 801 order HWH product below.

Item PT01450  
QE Product Item PT01475  
HWG product also available as add-on  
to POC Package, see page 55.

ANALYTES	CLIA REGULATED	UNREGULATED
		• Hemoglobin
2026 Ship Dates	April 6	October 12
Two shipments per year Three samples per shipment		

## Hemoglobin - HemoCue Hb 301 and Hb 801 - Waived (HWH)

1mL liquid samples intended for use with HemoCue Hb 301 and HemoCue Hb 801.

Item PT01455  
QE Product Item PT01465  
HWH product also available as add-on  
to POC Package, see page 55.

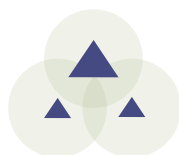
ANALYTES	CLIA REGULATED	UNREGULATED
		• Hemoglobin
2026 Ship Dates	April 6	October 12
Two shipments per year Three samples per shipment		

## Sickle Cell Screen (SK)

Stabilized RBC samples compatible with solubility and electrophoresis sickle cell methods.

Item PT02490  
QE Product Item PT02515

ANALYTES	CLIA REGULATED	UNREGULATED
		• Sickle cell screen
2026 Ship Dates	April 6	October 12
Two shipments per year Three samples per shipment		



# IMMUNOHEMATOLOGY

## ▲ Blood Bank

### Blood Bank - Comprehensive (AB)

Five bar-coded 4mL whole blood samples and one 2mL whole blood donor sample for compatibility testing. Intended for use with manual and automated methods.

	CLIA REGULATED		UNREGULATED	
ANALYTES	<ul style="list-style-type: none"> <li>• ABO group</li> <li>• Rh (D) typing</li> <li>• Unexpected antibody detection</li> </ul>	<ul style="list-style-type: none"> <li>• Compatibility testing</li> <li>• Antibody identification</li> </ul>		
2026 Ship Dates	February 23	June 15	October 5	Three shipments per year Five samples per shipment

Item PT04120  
QE Product Item PT04130

Samples are NOT compatible with Olympus PK7200/7300 instruments.

### Blood Bank - Limited (AB)

Five bar-coded 4mL whole blood samples. Intended for use with manual and automated methods.

	CLIA REGULATED		UNREGULATED	
ANALYTES	<ul style="list-style-type: none"> <li>• ABO group</li> </ul>	<ul style="list-style-type: none"> <li>• Rh (D) typing</li> </ul>		
2026 Ship Dates	February 23	June 15	October 5	Three shipments per year Five samples per shipment

Item PT04140  
QE Product Item PT04150

Samples are NOT compatible with Olympus PK7200/7300 instruments.

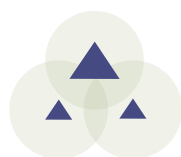
### Direct Antiglobulin Test (DAT)

Three bar-coded 2mL whole blood samples for Direct Antiglobulin Testing. Intended for use with manual and automated methods.

	CLIA REGULATED		UNREGULATED	
ANALYTES			<ul style="list-style-type: none"> <li>• DAT (Poly, IgG and Complement)</li> </ul>	
2026 Ship Dates	February 23	October 5		Two shipments per year Three samples per shipment

Item PT04145  
QE Product Item PT04146

Samples are NOT compatible with Olympus PK7200/7300 instruments.





# IMMUNOLOGY

## CRP Immunoserology (XP)

1mL liquid samples intended for methods screening for non-specific inflammatory disease.

ANALYTES	CLIA REGULATED		UNREGULATED
			<ul style="list-style-type: none"> <li>• C-reactive protein, qualitative *</li> <li>• C-reactive protein, quantitative</li> </ul>
<b>2026 Ship Dates</b>	January 20	August 24	Two shipments per year Three samples per shipment

Item PT04160  
QE Product Item PT04185

High-sensitivity CRP is now CLIA regulated. Laboratories reporting high-sensitivity CRP methods, see IE product on page 13.

\* Analyte(s) not yet accepted by the CAP Laboratory Accreditation Program

## Helicobacter pylori Serology (HL)

0.5mL liquid samples.

ANALYTES	CLIA REGULATED		UNREGULATED
			<ul style="list-style-type: none"> <li>• Helicobacter pylori, total antibody</li> </ul>
<b>2026 Ship Dates</b>	January 20	August 24	Two shipments per year Three samples per shipment

Item PT04010

For stool Helicobacter pylori, see HPSA product on page 41.  
For Urease, see RUR product on page 41.

## Hepatitis (YB)

1.5mL liquid samples. Compatible with traditional hepatitis methods and OraQuick HCV Rapid Antibody Test.

ANALYTES	CLIA REGULATED		UNREGULATED
	<ul style="list-style-type: none"> <li>• Anti-HBc, IgM</li> <li>• Anti-HBc, total antibody</li> </ul>	<ul style="list-style-type: none"> <li>• Anti-HBs</li> <li>• Anti-HCV</li> <li>• HBsAg</li> </ul>	<ul style="list-style-type: none"> <li>• Anti-HAV, IgM</li> </ul>
<b>2026 Ship Dates</b>	January 20	May 11	August 24
			Three shipments per year Five samples per shipment

Item PT04190  
Add-on to HV Item PT04195  
QE Product Item PT04191

**CLIA REGULATED ANALYTES SCORE TRANSMISSION**  
If reporting any of the following analytes in multiple modules, score transmission order can be found on page 6.  
Anti-Hbc, IgM • Anti-Hbc, total

## Hepatitis C - Waived Methods (YBC)

1mL liquid serum samples. Compatible with waived methods including OraQuick HCV Rapid Antibody Test.

ANALYTES	CLIA REGULATED		UNREGULATED
			<ul style="list-style-type: none"> <li>• Anti-HCV</li> </ul>
<b>2026 Ship Dates</b>	January 20	August 24	Two shipments per year Three samples per shipment

Item PT04192  
QE Product Item PT04193

## HIV (HV)

1mL liquid samples. Compatible with rapid and traditional testing methods used to test for Anti-HIV-1, Anti-HIV-1/2, or HIV-1 p24 Antigen.

	CLIA REGULATED	UNREGULATED
ANALYTES	<ul style="list-style-type: none"> <li>• Anti-HIV</li> <li>• Anti-HIV/p24 Antigen (not differentiated)</li> </ul>	<ul style="list-style-type: none"> <li>• p24 Antigen</li> </ul>
<b>2026 Ship Dates</b>	January 20      May 11	August 24
	Three shipments per year Five samples per shipment	

Item PT04020  
QE Product Item PT04030

**CLIA REGULATED ANALYTES SCORE TRANSMISSION**  
If reporting any of the following analytes in multiple modules, score transmission order can be found on page 6.  
Anti-HIV • Anti-HIV/p24 Antigen (not differentiated)

## HIV - Waived Methods (HVW)

1mL liquid samples. Compatible with waived rapid kits used to test for Anti-HIV-1, Anti-HIV-1/2, or HIV-1 p24 Antigen.

	CLIA REGULATED	UNREGULATED
ANALYTES		<ul style="list-style-type: none"> <li>• Anti-HIV</li> <li>• p24 Antigen</li> </ul>
<b>2026 Ship Dates</b>	January 20      August 24	
	Two shipments per year Three samples per shipment	

Item PT04040  
QE Product Item PT04062

## Infectious Disease Serology (MMV)

0.5mL lyophilized serum samples.

	CLIA REGULATED	UNREGULATED
ANALYTES		<ul style="list-style-type: none"> <li>• Measles IgG, qualitative*</li> <li>• Measles IgM, qualitative</li> <li>• Mumps IgG, qualitative</li> <li>• Mumps IgM, qualitative</li> <li>• Varicella Zoster IgG, qualitative *</li> <li>• Varicella Zoster IgM, qualitative</li> </ul>
<b>2026 Ship Dates</b>	January 20      August 24	
	Two shipments per year Three samples per shipment	

Item PT04320

\* Analyte(s) not yet accepted by the CAP Laboratory Accreditation Program

# IMMUNOLOGY

## Lyme Disease Serology (LY)

Item PT04200

0.5mL liquid samples.

ANALYTES	CLIA REGULATED		UNREGULATED
			• Lyme Disease Antibody (IgG, IgM, or total)
<b>2026 Ship Dates</b>	January 20	August 24	Two shipments per year Three samples per shipment

## Mono Immunoserology (ZM)

Item PT04210

0.65mL liquid samples.

ANALYTES	CLIA REGULATED		UNREGULATED
		• Infectious mononucleosis	
<b>2026 Ship Dates</b>	January 20	May 11	August 24 Three shipments per year Five samples per shipment

## Mono Immunoserology - Waived Methods (MW)

Item PT04220

QE Product Item PT04245

0.65mL liquid samples.

ANALYTES	CLIA REGULATED		UNREGULATED
			• Infectious mononucleosis
<b>2026 Ship Dates</b>	January 20	August 24	Two shipments per year Three samples per shipment

MW product also available as add-on to  
POC Package, see page 55.

## Mycoplasma Antibody (MP)

Item PT04300

0.5mL liquid samples. Compatible with kits that detect antibody to Mycoplasma pneumoniae.

ANALYTES	CLIA REGULATED		UNREGULATED
			• Mycoplasma antibody
<b>2026 Ship Dates</b>	January 20	August 24	Two shipments per year Three samples per shipment

## Rheumatoid Factor Immunoserology (ZR)

Item PT04250

Add-on to ZM Product Item PT04255

1mL liquid samples.

ANALYTES	CLIA REGULATED		UNREGULATED	
	• Rheumatoid factor, qualitative		• Rheumatoid factor, quantitative • Rheumatoid factor, titer (educational)	
<b>2026 Ship Dates</b>	January 20	May 11	August 24	Three shipments per year Five samples per shipment

## Rubella Immunoserology (XU)

Item PT04260

1mL liquid samples.

ANALYTES	CLIA REGULATED		UNREGULATED	
	• Rubella, qualitative (IgG)		• Rubella, quantitative (IgG) *	
<b>2026 Ship Dates</b>	January 20	May 11	August 24	Three shipments per year Five samples per shipment

\* Analyte(s) not yet accepted by the CAP Laboratory Accreditation Program

## Rubella IgM Immunoserology (XM)

Item PT04330

0.5mL lyophilized serum samples. For Quality Assurance only; does not meet CMS Rubella requirements.

ANALYTES	CLIA REGULATED		UNREGULATED	
			• Rubella, qualitative (IgM)	
<b>2026 Ship Dates</b>	January 20	August 24		Two shipments per year Three samples per shipment



# IMMUNOLOGY

## Syphilis Serology (SS)

1mL liquid samples intended for the quantitative and qualitative evaluation of antibody to Treponema pallidum. Intended for methods that evaluate serum specimens (RPR, VDRL, FTA, MHA-TP, TP-PA, EIA/ CIA, multiplex flow immunoassay, and rapid kits).

Item PT04270  
QE Product Item PT04280

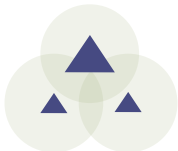
	CLIA REGULATED		UNREGULATED	
ANALYTES	<ul style="list-style-type: none"><li>• Syphilis Nontreponemal, qualitative</li><li>• Syphilis Nontreponemal, quantitative</li><li>• Syphilis Treponemal, qualitative</li></ul>			
2026 Ship Dates	January 20	May 11	August 24	Three shipments per year Five samples per shipment

## Syphilis Serology -Waived Methods (SSW)

1mL liquid serum samples intended for use with Syphilis Health Check (waived).

Item PT04272  
QE Product Item PT04273

	CLIA REGULATED		UNREGULATED	
ANALYTES			<ul style="list-style-type: none"><li>• Syphilis Treponemal, qualitative</li></ul>	
2026 Ship Dates	January 20	August 24	Two shipments per year Three samples per shipment	



# MICROBIOLOGY

---

## Microbiology CLIA requirements:

CLIA regulations require five regulated proficiency testing challenges, three times per year for each Microbiology sub-specialty:

- **Bacteriology:** Gram stain reaction and morphology, Direct bacterial antigen detection, Bacterial toxin detection, Detection of the presence/absence of bacteria without identification, Bacterial identification, Antimicrobial susceptibility require 2 samples per event.
- **Mycobacteriology:** Acid-fast stain, Detection of presence/absence of mycobacteria without identification, Mycobacteria identification. Mycobacteriology requires five challenges, two times per year.
- **Mycology:** Direct fungal antigen detection, Detection of presence/absence of fungi and aerobic actinomycetes without identification, Identification of fungi and aerobic actinomycetes.
- **Parasitology:** Direct parasite antigen detection, Detection of the presence/absence of parasites without identification, Parasite identification.
- **Virology:** Viral antigen detection, Detection and identification of viruses.

All non-waived tests in a sub-specialty can be combined to meet the five regulated challenges per event requirements.

Microbiology challenges tested by a waived method cannot be included with non-waived methods to meet the five challenges per event requirement.



# MICROBIOLOGY

## Multiplex Products:

We offer a variety of Multiplex products. Product descriptions and ordering information can be found on the pages listed to the right. Charts below and on the next page lists the organisms available in each product.

+ Meningitis Multiplex (MEP) is an Educational product.

Scores no longer sent to CMS. Labs must enroll in other regulated Bacteriology products to fulfill CLIA requirements.

Blood Pathogen Multiplex (BPM)	Page 38
GI Multiplex (EP)	Page 39
Meningitis Multiplex (MEP)	Page 41
Respiratory Multiplex (RP)	Page 48

Bacterial Identification	CLIA REGULATED			+
Organism	BPM	EP	RP	MEP
Acinetobacter species	X			
Aerococcus urinae				
Bacteroides fragilis	X			
Bordetella pertussis			X	
C. difficile, toxigenic		X		
Campylobacter species		X		
Chlamydia pneumoniae			X	
Citrobacter species	X			
Enterobacter species	X			
Enterococcus species	X			
Escherichia coli	X			
Escherichia coli (EAEC, EPEC, ETEC, EIEC, STEC, O157)		X		
Escherichia coli K1				X
Haemophilus influenzae	X			X
Klebsiella species	X			
Listeria species	X			X
Mycoplasma species			X	
Neisseria meningitidis	X			X
Plesiomonas shigelloides		X		
Proteus species	X			
Pseudomonas aeruginosa	X			
Salmonella species	X	X		
Serratia marcescens	X			
Staphylococcus species	X			
Stenotrophomonas maltophilia	X			
Streptococcus species	X			X
Vibrio species		X		
Yersinia enterocolitica		X		

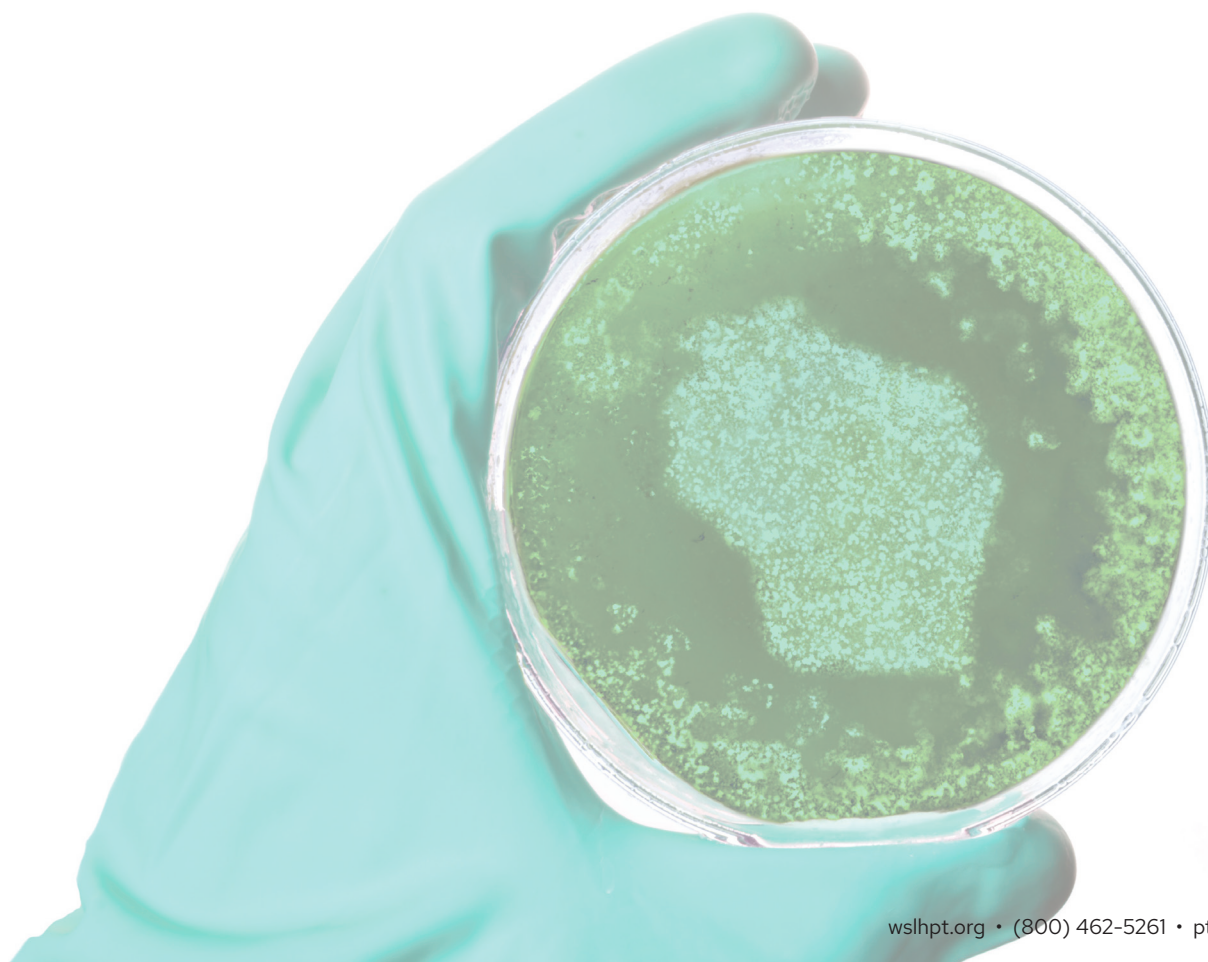
Fungal Identification	CLIA REGULATED			+
Organism	BPM	EP	RP	MEP
Candida species	X			
Cryptococcus neoformans/gattii	X			X

Parasite Identification	CLIA REGULATED			+
Organism	BPM	EP	RP	MEP
Cryptosporidium		X		
Cyclospora cayetanensis		X		
Entamoeba histolytica		X		
Giardia lamblia		X		

# MICROBIOLOGY

Viral Identification		CLIA REGULATED			+
Organism	BPM	EP	RP	MEP	
Adenovirus			X		
Adenovirus F 40/41		X			
Astrovirus		X			
Coronavirus			X		
Cytomegalovirus (CMV)				X	
Enterovirus				X	
Herpes simplex virus 1 (HSV-1)				X	
Herpes simplex virus 2 (HSV-2)				X	
Human herpesvirus 6 (HHV-6)				X	
Human metapneumovirus			X		
Human parechovirus				X	
Influenza (A/B)			X		
Norovirus GI/GII		X			
Parainfluenza			X		
Respiratory syncytial virus (RSV)			X		
Rhinovirus/Enterovirus			X		
Rotavirus A		X			
Sapovirus		X			
SARS-CoV-2			X		
Varicella zoster virus (VZV)				X	

Resistance Gene		UNREGULATED			+
Organism	BPM	EP	RP	MEP	
CTX-M	X				
IMP	X				
KPC	X				
mcr-1	X				
mecA/C and MREJ (MRSA)	X				
NDM	X				
OXA	X				
van A/B	X				
VIM	X				





# MICROBIOLOGY

## ▲ Bacteriology

### Bacteriology - Limited (MBC) Bacteriology - Comprehensive (MBC)

Procedures, sources, and number of challenges per year listed below. All samples compatible with culture or molecular methods unless noted. Gram stain performed on sample growth.

	CLIA REGULATED	UNREGULATED
PROCEDURES (NUMBER/YEAR)	<ul style="list-style-type: none"><li>• Anaerobic bacteria culture (1)</li><li>• Antimicrobial susceptibility (6)<ul style="list-style-type: none"><li>-Source-urine</li></ul></li><li>• C. difficile antigen, toxin and/or molecular (3)</li><li>• Enteric pathogen identification (1)</li><li>• Gram stain reaction/morphology (6)</li><li>• Group A Strep antigen detection (3)</li><li>• Group B Strep culture/molecular (3)<ul style="list-style-type: none"><li>-Source-vaginal</li></ul></li><li>• Methicillin-resistant Staph aureus (3)</li><li>• Miscellaneous culture (1)<ul style="list-style-type: none"><li>-Source-alternating (CSF, eye, synovial, respiratory, wound)</li></ul></li><li>• N. gonorrhoeae culture (3)<ul style="list-style-type: none"><li>-Sources-throat, urethral, vaginal</li></ul></li><li>• Strep identification culture/molecular (3)</li><li>• Urine culture (6)<ul style="list-style-type: none"><li>-Detection and/or identification</li></ul></li><li>• Vancomycin-resistant Enterococcus (3)</li></ul> <p><u>Included in Module 5038 only</u></p> <ul style="list-style-type: none"><li>• Blood culture (6)<ul style="list-style-type: none"><li>-Detection and/or identification</li></ul></li><li>• Gram stain reaction/morphology (6)</li></ul>	<ul style="list-style-type: none"><li>• Colony count (urine culture) *</li></ul>
2026 Ship Dates	February 9	June 8
	September 21	Three shipments per year Eight samples per shipment-5036 Ten samples per shipment-5038

### Limited Item PT05036 Comprehensive Item PT05038

Module 5036 includes samples listed, excluding blood culture samples.

Module 5038 includes all samples listed.

Group A Strep antigen samples are not compatible with molecular methods. See ST product on page 43 or WS product on page 40.

ENHANCED

\* Analyte(s) not yet accepted by the CAP Laboratory Accreditation Program

MICRO-BACTERIOLOGY

## Bacteriology - Blood Culture (MBC)

2 Sample Blood Culture Item PT05039

Samples for blood culture (detection and/or identification) and Gram stain from sample growth.

Item PT05039 only meets CLIA requirements if ordered with another regulated Bacteriology product.

**NEW!**

	CLIA REGULATED		UNREGULATED
PROCEDURES (NUMBER/YEAR)	<ul style="list-style-type: none"> <li>Blood culture (6)                             <ul style="list-style-type: none"> <li>-Detection and/or identification</li> </ul> </li> <li>Gram stain reaction/morphology (6)</li> </ul>		
<b>2026 Ship Dates</b>	February 9	June 8	September 21
	Three shipments per year Two samples per shipment		

## Bacterial Vaginosis Detection - Waived Methods (BV)

Item PT05005

Samples for the detection of bacterial vaginosis intended for use with the OSOM BVBLUE Test kit.

	CLIA REGULATED		UNREGULATED
PROCEDURES			<ul style="list-style-type: none"> <li>Bacterial vaginosis detection</li> </ul>
<b>2026 Ship Dates</b>	February 9	September 21	
	Two shipments per year Three samples per shipment		

## Bioterrorism Preparedness Exercise (BPE)

Item PT06010

This is an educational exercise intended to document QA/competency for biological emergency response situations. It provides surrogate organisms with characteristics that mimic potentially lethal pathogens. Scores are not transmitted to accreditation agencies.

Contact WSLH PT for more information.

State coordinators can arrange to enroll and fund their response network (sentinel) laboratories. They will receive copies of all reports for use in assessment and documentation of capacity, readiness, and training needs.

<b>2026 Ship Dates</b>	March 9	October 5	Two shipments per year Two samples per shipment
------------------------	---------	-----------	--

# MICROBIOLOGY

## ▲ Bacteriology

### Blood Pathogen Multiplex (BPM)

Item PT05480

Blood pathogen multiplex panel for molecular platforms. For identification of bacterial (aerobic and anaerobic) pathogens, fungal pathogens and resistance genes present in simulated positive blood culture.

Targets available for reporting are listed on pages 34 and 35. Not all platforms will detect all targets listed.

PROCEDURES	CLIA REGULATED		UNREGULATED	
	<ul style="list-style-type: none"><li>• Bacterial identification</li><li>• Fungal identification</li></ul>		<ul style="list-style-type: none"><li>• Resistance genes (Appropriate for bacterial target selected)</li></ul>	
2026 Ship Dates	February 9	June 8	September 21	Three shipments per year Five samples per shipment

### Bordetella by Molecular Methods (BOR)

Item PT05054

Intended for identification of *B. pertussis*, *B. parapertussis*, and/or *B. holmesii* by molecular methods.

PROCEDURES	CLIA REGULATED		UNREGULATED	
	<ul style="list-style-type: none"><li>• Bordetella species identification</li></ul>			
2026 Ship Dates	February 9	June 8	September 21	Three shipments per year Five samples per shipment

### Carbapenem Resistance Detection (CR)

Item PT05330

QE Product Item PT05335

Samples for detection of Carbapenem-resistant organisms (CRO). Intended for molecular methods, including the Cepheid GeneXpert Carba-R.

PROCEDURES	CLIA REGULATED		UNREGULATED	
			<ul style="list-style-type: none"><li>• IMP detection</li><li>• KPC detection</li><li>• NDM-1 detection</li><li>• OXA-48 detection</li><li>• VIM detection</li></ul>	
2026 Ship Dates	March 23	October 19		Two shipments per year Five samples per shipment

### C. difficile (CD)

Item PT05060

QE Product Item PT05065

Compatible with rapid antigen or toxin detection methods as well as molecular methods.

PROCEDURES	CLIA REGULATED		UNREGULATED	
	<ul style="list-style-type: none"><li>• C. difficile antigen detection</li><li>• C. difficile molecular</li><li>• C. difficile toxin detection</li></ul>			
2026 Ship Dates	February 9	June 8	September 21	Three shipments per year Five samples per shipment

## CT/GC/TV Detection (AC)

Item PT05070

Samples containing human DNA. Intended for molecular methods.

	CLIA REGULATED		UNREGULATED	
PROCEDURES	<ul style="list-style-type: none"> <li>• Chlamydia trachomatis identification</li> <li>• Neisseria gonorrhoeae identification</li> <li>• Trichomonas identification</li> </ul>			
2026 Ship Dates	February 9	June 8	September 21	Three shipments per year Five samples per shipment

## Enteric Pathogens (NP)

Item PT05080

Each organism is presented at least once per year. Compatible with culture, molecular methods and rapid Campylobacter identification methods.

NOT compatible with Shiga Toxin testing methods, see SHG product on page 42.

	CLIA REGULATED		UNREGULATED	
PROCEDURES	<ul style="list-style-type: none"> <li>• Aeromonas</li> <li>• Campylobacter</li> <li>• E. coli O157:H7</li> <li>• Plesiomonas</li> </ul>		<ul style="list-style-type: none"> <li>• Salmonella</li> <li>• Shigella</li> <li>• Vibrio</li> <li>• Yersinia</li> </ul>	
2026 Ship Dates	February 9	June 8	September 21	Three shipments per year Five samples per shipment

## GI Multiplex (EP)

Samples intended for gastrointestinal multiplex assays.

Item PT05380

3 Sample Add-on Item PT05381

Targets available for reporting are listed on pages 34 and 35. Not all platforms will detect all targets listed.

	CLIA REGULATED		UNREGULATED	
PROCEDURES	<ul style="list-style-type: none"> <li>• Bacterial identification</li> <li>• Parasite identification</li> <li>• Viral identification</li> </ul>			
2026 Ship Dates	February 9	June 8	September 21	Three shipments per year Five samples per shipment



# MICROBIOLOGY

## ▲ Bacteriology

### Gram Stain (GS)

Unfixed slides for Gram staining.

Item PT05090  
QE Product Item PT05100

CLIA REGULATED		UNREGULATED	
PROCEDURES	• Gram stain reaction/morphology		
2026 Ship Dates	February 9	June 8	September 21
Three shipments per year Five samples per shipment			

### Group A Strep Antigen (Rapid Strep) (SA)

Samples for Group A Streptococci antigen detection (rapid strep).

Item PT05110  
QE Product Item PT05120

Group A Strep antigen samples are not compatible with molecular methods.  
See ST product on page 43 or WS product below.

CLIA REGULATED		UNREGULATED	
PROCEDURES	• Group A Strep antigen detection		
2026 Ship Dates	February 9	June 8	September 21
Three shipments per year Five samples per shipment			

### Group A Strep - Waived Methods (WS)

Intended for waived antigen or waived molecular methods only.

Item PT05130  
QE Product Item PT05155

WS product also available in POC Package, see page 55.

CLIA REGULATED		UNREGULATED	
PROCEDURES		• Group A Strep detection	
2026 Ship Dates	April 6	October 12	
Two shipments per year Three samples per shipment			

### Group B Strep (SB)

Samples for identification of Group B Streptococci by culture or molecular methods.

Item PT05180  
QE Product Item PT05185

CLIA REGULATED		UNREGULATED	
PROCEDURES	• Group B Strep Identification		
2026 Ship Dates	February 9	June 8	September 21
Three shipments per year Five samples per shipment			

## Helicobacter pylori Antigen, Stool (HPSA)

0.5mL liquid samples intended for the qualitative evaluation of Helicobacter pylori antigen in stool specimens.

PROCEDURES	CLIA REGULATED		UNREGULATED	
	• Helicobacter pylori antigen detection			
<b>2026 Ship Dates</b>	February 9	June 8	September 21	Three shipments per year Two samples per shipment

### 2 sample Add-on Item PT05401 QE Product Item PT05403

For non-waived methods, Item PT05401 only meets CLIA requirements if ordered with another regulated Bacteriology product.

For serum Helicobacter pylori, see HL product on page 28.

## Helicobacter pylori - Rapid Urease (RUR)

Simulated gastric biopsy samples on paper disks. Intended for use with CLOtest, PyloriTek, or similar methods.

ANALYTES	CLIA REGULATED		UNREGULATED	
			• Urease *	
<b>2026 Ship Dates</b>	February 9	September 21	Two shipments per year Three samples per shipment	

### Item PT05500

For serum Helicobacter pylori, see HL product on page 28.

\* Analyte(s) not yet accepted by the CAP Laboratory Accreditation Program

## Legionella Antigen (LGA)

Samples for Legionella Antigen detection methods in urine.

ANALYTES	CLIA REGULATED		UNREGULATED	
	• Legionella antigen			
<b>2026 Ship Dates</b>	February 9	June 8	September 21	Three shipments per year Two samples per shipment

### 2 Sample Add-on Item PT05440 QE Product Item PT05441

Item PT05440 only meets CLIA requirements if ordered with another regulated Bacteriology product.

## Meningitis Multiplex (MEP)

Samples intended for meningitis multiplex assays.

ANALYTES	EDUCATIONAL			
	• Bacterial identification+ • Fungal identification+ • Viral identification+			
<b>2026 Ship Dates</b>	February 9	June 8	September 21	Three shipments per year Two samples per shipment

### 2 Sample Add-on Item PT05451

Targets available for reporting are listed on pages 34 and 35. Not all platforms will detect all targets listed.

+EDUCATIONAL: Scores no longer sent to CMS. Labs must enroll in other regulated Bacteriology products to fulfill CLIA requirements.

# MICROBIOLOGY

## ▲ Bacteriology

### MRSA (MR)

Compatible with culture and molecular methods.

Item PT05200  
QE Product Item PT05210

PROCEDURES	CLIA REGULATED		UNREGULATED	
	<ul style="list-style-type: none"><li>• Staphylococcus aureus</li><li>• Methicillin-resistant S. aureus</li></ul>			
2026 Ship Dates	February 9	June 8	September 21	Three shipments per year Five samples per shipment

### Mycoplasma genitalium Molecular (MG)

Samples for molecular identification of Mycoplasma genitalium.

2 Sample Add-on Item PT05461

Item PT05461 only meets CLIA requirements if ordered with another regulated Bacteriology product.

PROCEDURES	CLIA REGULATED		UNREGULATED	
	<ul style="list-style-type: none"><li>• M. genitalium identification</li></ul>			
2026 Ship Dates	February 9	June 8	September 21	Three shipments per year Two samples per shipment

### S. pneumoniae Antigen (BA)

Samples for rapid antigen detection. Compatible with BinaxNOW Streptococcus pneumoniae antigen card and other antigen detection methods (Urine/CSF).

Item PT05000

PROCEDURES	CLIA REGULATED		UNREGULATED	
	<ul style="list-style-type: none"><li>• Streptococcus pneumoniae antigen detection</li></ul>			
2026 Ship Dates	February 9	June 8	September 21	Three shipments per year Five samples per shipment

### Shiga Toxin (SHG)

Samples for Shiga toxin 1 and/or 2 and undifferentiated detection methods. Compatible with rapid antigen detection and molecular methods.

2 Sample Add-on Item PT05241  
QE Product Item PT05242

Item PT05241 only meets CLIA requirements if ordered with another regulated Bacteriology product.

PROCEDURES	CLIA REGULATED		UNREGULATED	
	<ul style="list-style-type: none"><li>• Shiga toxin 1 detection</li><li>• Shiga toxin 2 detection</li><li>• Shiga toxin undifferentiated</li></ul>			
2026 Ship Dates	February 9	June 8	September 21	Three shipments per year Two samples per shipment

## Strep Identification (ST)

Item PT05170

Samples for identification of Group A or Group C/G Strep, Compatible with culture and molecular methods.

**ENHANCED**

	CLIA REGULATED		UNREGULATED	
PROCEDURES	• Strep identification			
2026 Ship Dates	February 9	June 8	September 21	Three shipments per year Five samples per shipment

## Throat/Urine Bacteriology (TU)

Item PT05250

Samples for urine culture, Group A and/or C/G Strep culture/molecular, and Group A Streptococci antigen detection (rapid strep).

Group A Strep antigen samples are not compatible with molecular methods. See ST product above or WS product on page 40.

	CLIA REGULATED		UNREGULATED	
PROCEDURES (NUMBER/ SHIPMENT)	<ul style="list-style-type: none"> <li>• Antimicrobial susceptibility (2)</li> <li>• Gram stain reaction/morphology (1)</li> <li>• Group A Strep antigen detection (2)</li> <li>• Strep identification (2)</li> <li>• Urine culture (3) -Detection and/or identification</li> </ul>		• Colony count (urine culture) *	
2026 Ship Dates	February 9	June 8	September 21	Three shipments per year Seven samples per shipment

\* Analyte(s) not yet accepted by the CAP Laboratory Accreditation Program

## Throat/Urine Bacteriology - Limited (TU)

Item PT05260

Samples for urine culture and Group A and/or C/G Strep culture/molecular.

	CLIA REGULATED		UNREGULATED	
PROCEDURES (NUMBER/ SHIPMENT)	<ul style="list-style-type: none"> <li>• Antimicrobial susceptibility (2)</li> <li>• Gram stain reaction/morphology (1)</li> <li>• Strep identification (2)</li> <li>• Urine culture (3) -Detection and/or identification</li> </ul>		• Colony count (urine culture) *	
2026 Ship Dates	February 9	June 8	September 21	Three shipments per year Five samples per shipment

\* Analyte(s) not yet accepted by the CAP Laboratory Accreditation Program



# MICROBIOLOGY

## ▲ Bacteriology

### Urine Culture (UC)

Item PT05270

Samples for urine culture.

PROCEDURES (NUMBER/ SHIPMENT)	CLIA REGULATED	UNREGULATED
	<ul style="list-style-type: none"><li>• Antimicrobial susceptibility (2)</li><li>• Gram stain reaction/morphology (1)</li><li>• Urine culture (5) -Detection and/or identification</li></ul>	<ul style="list-style-type: none"><li>• Colony count (urine culture) *</li></ul>
2026 Ship Dates	February 9      June 8	September 21
Three shipments per year Five samples per shipment		

\* Analyte(s) not yet accepted by the CAP Laboratory Accreditation Program

### Vaginal Pathogens (VP)

Item PT05280  
QE Product Item PT05290

Intended for use with the BD Affirm VPIII.

PROCEDURES	CLIA REGULATED	UNREGULATED
	<ul style="list-style-type: none"><li>• Candida identification</li><li>• Gardnerella identification</li><li>• Trichomonas identification</li></ul>	
2026 Ship Dates	February 9      June 8	September 21
Three shipments per year Five samples per shipment		

### VP Molecular (VPM)

Item PT05470

Samples for identification of vaginal pathogens via molecular methods. Compatible with most molecular platforms including BD MAX and Cepheid GeneXpert Xpress Vaginal Panels.

PROCEDURES	CLIA REGULATED	UNREGULATED
	<ul style="list-style-type: none"><li>• Candida identification</li><li>• Trichomonas identification</li></ul>	<ul style="list-style-type: none"><li>• Bacterial vaginosis detection</li></ul>
2026 Ship Dates	February 9      June 8	September 21
Three shipments per year Five samples per shipment		

# MICROBIOLOGY

## ▲ Mycobacteriology

### Acid-Fast Stain (MA)

Intended for reporting the presence or absence of acid-fast bacilli.

Item PT06000

Add-on to MB (below) Item PT06005

CLIA REGULATED		UNREGULATED
PROCEDURES	• Acid-fast stain	
2026 Ship Dates	March 9      September 14	Two shipments per year Five samples per shipment

### Mycobacteriology Culture (MB)

Intended for Mycobacterium species culture.

Item PT06060

CLIA REGULATED		UNREGULATED
PROCEDURES	• Mycobacteria culture	
2026 Ship Dates	January 26      August 3	Two shipments per year Five samples per shipment

### M. tuberculosis by Molecular Methods (TB)

Intended for Mycobacterium tuberculosis detection by molecular methods. Includes detection of Rifampin resistance.

Item PT06050

QE Product Item PT06055

CLIA REGULATED		UNREGULATED
PROCEDURES	• M. tuberculosis detection	• Rifampin resistance screen
2026 Ship Dates	March 9      September 14	Two shipments per year Five samples per shipment



# MICROBIOLOGY

## ▲ Mycology

### KOH Slides (KOH)

Item PT06230

Slides for KOH/calcofluor white preparations. Samples for detection of yeast and fungal elements on skin.

CLIA REGULATED		UNREGULATED	
PROCEDURES		• KOH Preparation	
2026 Ship Dates	February 9	September 21	Two shipments per year Three samples per shipment

### Mycology - Comprehensive (MY)

Item PT06070

Samples for comprehensive fungal identification including yeast, dermatophytes, and aerobic actinomycete identification.

CLIA REGULATED		UNREGULATED	
PROCEDURES	• Aerobic Actinomycetes identification • Mold, yeast, and yeast-like organism identification		
2026 Ship Dates	January 5	May 4	August 17 Three shipments per year Five samples per shipment

### Mycology - Dermatophyte (DM)

Item PT06090

Designed for laboratories or dermatology offices reporting the presence or absence of dermatophytes. Compatible with Dermatophyte Test Medium [DTM] or non-specialized and non-differential mycology media.

CLIA REGULATED		UNREGULATED	
PROCEDURES	• Dermatophyte screen (Qualitative)		
2026 Ship Dates	January 5	May 4	August 17 Three shipments per year Five samples per shipment

### Mycology - Yeast (YE)

Item PT06100

Samples for yeast identification. Not intended for wet mount preparations.

CLIA REGULATED		UNREGULATED	
PROCEDURES	• Yeast and yeast-like organism identification		
2026 Ship Dates	January 5	May 4	August 17 Three shipments per year Five samples per shipment

## Blood Parasites (PAB)

Item PT06020

Samples include slides with giemsa-stained thick and thin blood smears and/or photomicrographs.

	CLIA REGULATED		UNREGULATED	
PROCEDURES	• Blood parasite identification			
2026 Ship Dates	February 9	June 8	September 21	Three shipments per year Five samples per shipment

## Giardia/Cryptosporidium Antigen Detection (GI)

Item PT06030

Intended for laboratories performing Giardia/Cryptosporidium screening on stool samples.

	CLIA REGULATED		UNREGULATED	
PROCEDURES	• Giardia/Cryptosporidium antigen detection			
2026 Ship Dates	February 9	June 8	September 21	Three shipments per year Five samples per shipment

## Parasitology - Comprehensive (PA)

Item PT06110

Sample types include: formalin-preserved stool suspension for wet mount and/or modified acid-fast stain, stool suspension for Giardia/ Cryptosporidium antigen detection, zinc-PVA stool smears, blood parasite smears/photomicrographs.

	CLIA REGULATED		UNREGULATED	
PROCEDURES	<ul style="list-style-type: none"> <li>• Blood parasite identification</li> <li>• Giardia/Cryptosporidium antigen detection</li> <li>• Stool parasite identification</li> </ul>			
2026 Ship Dates	February 9	June 8	September 21	Three shipments per year Six samples per shipment

## Trichomonas - Waived Methods (TV)

Item PT05310  
QE Product Item PT05315

Samples for detection of Trichomonas intended for use with OSOM Trichomonas Rapid Test.

	CLIA REGULATED		UNREGULATED	
PROCEDURES			• Trichomonas detection	
2026 Ship Dates	February 9	September 21		Two shipments per year Three samples per shipment

# MICROBIOLOGY

## ▲ Virology

### HSV Molecular (HSV)

Item PT06220

1mL liquid samples intended for molecular detection of Herpes simplex virus (HSV) 1 & 2.

ANALYTES	CLIA REGULATED		UNREGULATED	
	• HSV 1	• HSV 2		
2026 Ship Dates	February 9	June 8	September 21	Three shipments per year Five samples per shipment

### Rabies (RA)

Dual impressions on Teflon-coated slides.

DFA Method Item PT06130  
QE Product DFA Method Item PT06137  
dRIT Method Item PT06140  
QE Product dRIT Method Item PT06147

ANALYTES	CLIA REGULATED		UNREGULATED	
			• Rabies Antigen	
2026 Ship Dates	April 13	October 5		Two shipments per year Five samples per shipment

### Respiratory Multiplex (RP)

Lyophilized samples intended for molecular respiratory multiplex assays.

Item PT06240  
3 sample Add-on Item PT06241  
QE Product Item PTO6244

For methods that detect SARS/Influenza or SARS/Influenza/RSV, see CM product on page 49 and CMW product on page 50.

Targets available for reporting are listed on pages 34 and 35. Not all platforms will detect all targets listed.

ANALYTES	CLIA REGULATED		UNREGULATED	
	• Bacterial identification • Viral identification			
2026 Ship Dates	February 9	June 8	September 21	Three shipments per year Five samples per shipment

### SARS-CoV-2 Antigen (CV)

Swabs intended for antigen tests targeting the SARS-CoV-2 nucleoprotein.

Item PT06288  
QE Product Item PT06289

ANALYTES	CLIA REGULATED		UNREGULATED	
	• SARS-CoV-2			
2026 Ship Dates	February 9	June 8	September 21	Three shipments per year Five samples per shipment



## SARS-CoV-2 Antigen - Waived Methods (CVW)

Swabs intended for waived antigen tests targeting the SARS-CoV-2 nucleoprotein.

Item PT06290  
QE Product Item PT06295

	CLIA REGULATED	UNREGULATED
ANALYTES		• SARS-CoV-2
2026 Ship Dates	February 9 September 21	Two shipments per year Three samples per shipment

## SARS-CoV-2/Flu Antigen Combo - Waived (CFW)

Swab samples intended for waived antigen Combo assays targeting SARS-CoV-2 and Influenza A/B simultaneously.

Item PT06292  
QE Product Item PT06293

**NEW!**

	CLIA REGULATED	UNREGULATED
ANALYTES		• Influenza A • Influenza B • SARS-CoV-2
2026 Ship Dates	February 9 September 21	Two shipments per year Three samples per shipment

## SARS-CoV-2 Molecular Liquid (CLM)

1mL liquid samples for molecular detection of SARS-CoV-2 (whole genome). Intended for analyzer assays such as BD, Hologic, and Roche.

Item PT06300  
QE Product Item PT06305

	CLIA REGULATED	UNREGULATED
ANALYTES	• SARS-CoV-2	
2026 Ship Dates	February 9 June 8	September 21 Three shipments per year Five samples per shipment

## SARS/Viral Molecular (CM)

Swabs with elution liquid intended for molecular detection of SARS-CoV-2 (whole genome), Influenza, and RSV. Can be used for multi-analyte SARS/Viral methods or single SARS methods.

Item PT06270  
QE Product Item PT06275

Contact WSLH PT for ordering instruction if additional swabs are needed for processing of separate test cartridges.

Hologic Aptima users order CLM product above.

	CLIA REGULATED	UNREGULATED
ANALYTES	• Influenza A • Influenza B • RSV • SARS-CoV-2	
2026 Ship Dates	February 9 June 8	September 21 Three shipments per year Five samples per shipment

# MICROBIOLOGY

▲ Virology

Abbott ID NOW (waived) users: please use the following table to order your Viral PT

	PT06170	PT06280	
SARS CoV-2 Only		X	
SARS CoV-2 + Influenza (separate assays)	X	X	must order both
SARS CoV-2 + Influenza using Sequential workflow		X	
RSV	X		
Influenza + RSV	X		
SARS CoV-2, Influenza, and RSV	X	X	must order both

## SARS/Viral Molecular - Waived Methods (CMW)

Swabs with elution liquid intended for molecular detection of waived SARS-CoV-2 (whole genome), Influenza, and RSV methods. Can be used for waived multi-analyte SARS/Viral or single SARS methods.

	CLIA REGULATED	UNREGULATED
ANALYTES		<ul style="list-style-type: none"><li>• Influenza A</li><li>• Influenza B</li><li>• RSV</li><li>• SARS-CoV-2</li></ul>
2026 Ship Dates	February 9 September 21	Two shipments per year Three samples per shipment

Item PT06280  
QE Product Item PT06285

Contact WSLH PT for ordering instruction if additional swabs are needed for processing of separate test cartridges.

Hologic Aptima users order CLM product on page 49.

Abbott ID NOW users see table above.

## Viral - Waived Methods (VCW)

1mL liquid samples for waived rapid antigen test kits or molecular methods.

	CLIA REGULATED	UNREGULATED
ANALYTES		<ul style="list-style-type: none"><li>• Adenovirus *</li><li>• Influenza A</li><li>• Influenza B</li><li>• RSV</li></ul>
2026 Ship Dates	February 9 September 21	Two shipments per year Three samples per shipment

Item PT06170  
QE Product Item PT06195

Abbott ID NOW users see table above.

\* Analyte(s) not yet accepted by the CAP Laboratory Accreditation Program

MICRO-VIROLOGY

Viral - Limited (VA)

1mL liquid samples for rapid antigen test kits or molecular methods.

Item PT06150  
QE Product Item PT06160

ANALYTES	CLIA REGULATED		UNREGULATED	
	<ul style="list-style-type: none"><li>• Adenovirus</li><li>• Influenza A</li></ul>	<ul style="list-style-type: none"><li>• Influenza B</li><li>• RSV</li></ul>		
2026 Ship Dates	February 9	June 8	September 21	Three shipments per year Five samples per shipment

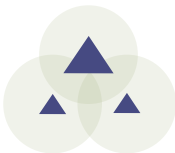
Viral with Rotavirus (VA)

1mL liquid samples for rapid antigen test kits or molecular methods.

Item PT06200  
QE Product Item PT06210

Customers not testing Rotavirus,  
choose Limited product above.

ANALYTES	CLIA REGULATED		UNREGULATED	
	<ul style="list-style-type: none"><li>• Adenovirus</li><li>• Influenza A</li><li>• Influenza B</li></ul>	<ul style="list-style-type: none"><li>• RSV</li><li>• Rotavirus</li></ul>		
2026 Ship Dates	February 9	June 8	September 21	Three shipments per year Five samples per shipment



# URINALYSIS/MICROSCOPY/MISC

## Amniotic Fluid Detection (AE)

Item PT03000

1mL liquid samples for detecting the presence/absence of fluid from ruptured fetal membranes.  
Intended for use with the Actim PROM, AmniSure ROM, Clinical Innovations ROM Plus, and PartoSure.

For Amniotic pH and pH ruptured interpretation, see PH product on page 12.

CLIA REGULATED		UNREGULATED
ANALYTES		• Rupture of fetal membranes
2026 Ship Dates	May 26 October 19	Two shipments per year Two samples per shipment

## Body Fluid Cell Count (BFA & BFM)

Automated cell count (BFA) Item PT03030  
Manual cell count (BFM) Item PT03040  
QE Product BFA Item PT03037

Clear, protein-based, liquid samples intended for labs performing body fluid cell counts by automated or manual methods. These samples are NOT compatible with the IRIS IQ200.

CLIA REGULATED		UNREGULATED
ANALYTES		• RBC • Total nucleated count/WBC
2026 Ship Dates	April 6 October 12	Two shipments per year Three samples per shipment

## Body Fluid Microscopy (BF)

Item PT03050

Three images (paper and online versions) that include crystal(s) and/or cell identification(s) found in miscellaneous fluids (e.g., synovial, spinal, pleural). A synovial fluid crystal identification will be provided in one of the three images per event.

CLIA REGULATED		UNREGULATED
ANALYTES		• Cell identification • Crystal identification
2026 Ship Dates	April 6 October 12	Two shipments per year Three samples per shipment

## Fecal Lactoferrin (LF)

Item PT03060

0.5mL liquid samples compatible with the LACTOFERRIN CHEK, LACTOFERRIN EZ VUE, and LEUKO EZ VUE methods.

CLIA REGULATED		UNREGULATED
ANALYTES		• Lactoferrin
2026 Ship Dates	April 6 October 12	Two shipments per year Three samples per shipment

# URINALYSIS/MICROSCOPY/MISC

## Fecal Occult Blood (OC)

Simulated fecal samples compatible with FOB (slide), iFOB, and automated systems.

Item PT03071  
QE Product Item PT03074

OC product also available in POC  
Package, see page 55.

CLIA REGULATED		UNREGULATED	
ANALYTES		• Occult blood, fecal	
2026 Ship Dates	April 6	October 12	Two shipments per year Two samples per shipment

## Fetal Fibronectin (FFN)

1mL liquid simulated cervicovaginal samples.

Item PT03100

CLIA REGULATED		UNREGULATED	
ANALYTES		• Fetal fibronectin	
2026 Ship Dates	May 26	October 19	Two shipments per year Three samples per shipment

## Gastric Occult Blood (GO)

Liquid samples intended for Beckman Coulter Gastrocuccult slides and HemaPrompt FG slides.

Item PT03110  
QE Product Item PT03135

CLIA REGULATED		UNREGULATED	
ANALYTES		• Occult blood, gastric	
2026 Ship Dates	April 6	October 12	Two shipments per year Three samples per shipment

## Provider Performed Microscopy (PM)

Two images (paper and online versions) for each of the procedures listed below.

Item PT03170  
QE Product Item PT03195

PM product also available in POC  
Package, see page 55.

If only performing Urine Sediment  
Identification, see SU product on  
page 54.

Online PPM Competency is also  
available on page 60.

CLIA REGULATED		UNREGULATED	
ANALYTES		<ul style="list-style-type: none"><li>• Fecal smear for leukocytes</li><li>• Fern test</li><li>• KOH preparation, skin</li><li>• KOH preparation, vaginal</li><li>• Nasal smear for eosinophils</li><li>• Pinworm preparation</li><li>• Urine sediment</li><li>• Vaginal wet preparation</li></ul>	
2026 Ship Dates	April 6	October 12	Two shipments per year Two challenges per procedure



# URINALYSIS/MICROSCOPY/MISC

## Urinalysis and Urine hCG (UR)

10 mL liquid samples for urinalysis and urine pregnancy.

ANALYTES	CLIA REGULATED	UNREGULATED
		<ul style="list-style-type: none"> <li>• Bilirubin</li> <li>• Bilirubin - Tablet test</li> <li>• Glucose</li> <li>• hCG, urine – qualitative</li> <li>• Hemoglobin/Blood</li> <li>• Ketones</li> <li>• Ketones – Tablet test</li> <li>• Leukocyte esterase</li> <li>• Nitrites</li> <li>• pH</li> <li>• Protein</li> <li>• Specific gravity</li> <li>• Urobilinogen</li> </ul>
<b>2026 Ship Dates</b>	April 6	October 12
Two shipments per year Three samples per shipment		

Item PT03260  
QE Product Item PT03285

If only performing Urine hCG, see UH product below.

For serum hCG see CET and HCG products on page 14.

UR product also available in POC Package, see page 55.

## Urine hCG (UH)

1 mL liquid samples for urine pregnancy.

ANALYTES	CLIA REGULATED	UNREGULATED
		<ul style="list-style-type: none"> <li>• hCG, urine – qualitative</li> </ul>
<b>2026 Ship Dates</b>	April 6	October 12
Two shipments per year Three samples per shipment		

Item PT03291  
QE Product Item PT03292

If performing Urinalysis and Urine hCG, see UR product above.

For serum hCG see CET and HCG products on page 14.

**NEW!**

## Urine Sediment Identification (SU)

Two images (paper and online versions) for the identification of urine sediment components.

ANALYTES	CLIA REGULATED	UNREGULATED
		<ul style="list-style-type: none"> <li>• Urine sediment</li> </ul>
<b>2026 Ship Dates</b>	April 6	October 12
Two shipments per year Two challenges per shipment		

Item PT03320  
QE Product Item PT03345

# URINALYSIS/MICROSCOPY/MISC

## Create Your Own Point of Care Package

You can create your own point of care package by choosing combinations of a variety of items.

### Point of Care Package

The Point of Care Package includes a choice of 2 to 4 items for one package price.

To create your package:

- Order Item PT03400 and choose up to 4 items from the POC Product list below.
- Fifth item may be added on for additional charge. (Order PT03401 with PT03400)

### Item PT03400

If ordering only one item see individual product listings.

For complete product descriptions refer to pages listed below.

OC - page 53  
WBG - page 15  
WS - page 40  
PM - page 53  
UR - page 54

#### POC PRODUCTS FOR ITEM PT03400

#### POC ITEM #

• Fecal Occult Blood (OC) - 2 samples	PT03073
• Glucose Whole Blood (WBG) - 2 samples	PT01883
• Group A Strep - Waived Methods (WS) - 3 samples	PT05135
• Provider Performed Microscopy (PM) - 2 photos of each procedure	PT03175
• Urinalysis and Urine hCG (UR) - 3 samples	PT03265

### Add-on Products to Point of Care Package

For more choices, the items listed below can be added on to the Point of Care Package.

#### ADD ON PRODUCTS TO PT03400

#### ADD-ON ITEM #

• Hemoglobin - Waived Methods (HWG) - 3 samples	PT01451
• Hemoglobin - HemoCue Hb 301 and Hb 801 - Waived (HWH) - 3 samples	PT01456
• Mono Immunoserology - Waived Methods (MW) - 3 samples	PT04222

For complete product descriptions refer to pages listed below.

HWG - page 26  
HWH - page 26  
MW - page 30

### Quality Evaluation (QE) Products

Need Quality Evaluation (QE) products? These products can be ordered in conjunction with any of the above corresponding Primary products and may be ordered in multiples.

For complete product descriptions refer to pages listed below.

#### QUALITY EVALUATION (QE) PRODUCTS

#### QE ITEM #

• Fecal Occult Blood (OC) - 2 samples	PT03074
• Glucose Whole Blood (WBG) - 3 samples	PT01895
• Group A Strep - Waived Methods (WS) - 3 samples	PT05155
• Hemoglobin - Waived Methods (HWG) - 3 samples	PT01475
• Hemoglobin - HemoCue Hb 301 and Hb 801 - Waived (HWH) - 3 samples	PT01465
• Provider Performed Microscopy (PM) - 2 photos of each procedure	PT03195
• Urinalysis and Urine hCG (UR) - 3 samples	PT03285

OC - page 53  
WBG - page 15  
WS - page 40  
HWG - page 26  
HWH - page 26  
PM - page 53  
UR - page 54

2026 Ship Dates April 6

October 12

Two shipments per year  
Two/Three challenges per shipment



## Post-Vasectomy Semen Analysis (PV)

Item PT03140

1mL stabilized liquid sperm samples for post-vasectomy presence/absence screening and sperm count. Samples designed for manual methods.

ANALYTES	CLIA REGULATED		UNREGULATED
			• Sperm count, qualitative
2026 Ship Dates	May 26	October 19	Two shipments per year Two samples per shipment

## Post-Vasectomy with Motility (PVM)

Item PT03145

Web-base videos of two post-vasectomy semen samples for the presence/absence of sperm and presence/absence of motility.

ANALYTES	CLIA REGULATED		UNREGULATED
			• Sperm count, qualitative * • Sperm motility, qualitative
2026 Ship Dates	May 26	October 19	Two shipments per year Two samples per shipment

\* Analyte(s) not yet accepted by the CAP Laboratory Accreditation Program

## Sperm Count (SP)

Item PT03200

1mL stabilized liquid sperm samples. Samples designed for manual methods.

ANALYTES	CLIA REGULATED		UNREGULATED
			• Sperm count, quantitative
2026 Ship Dates	May 26	October 19	Two shipments per year Two samples per shipment

## Sperm Morphology (SM & SMS)

Unstained slide (SM) Item PT03210  
Pre-stained slide (SMS) Item PT03220

Slide and image for percent normal and morphology assessment. Pre-stained slide is stained with modified Papanicolaou.

CLIA REGULATED		UNREGULATED	
ANALYTES		• Sperm morphology	
2026 Ship Dates	May 26	October 19	Two shipments per year One slide & image per shipment

## Sperm Motility (MOT)

Item PT03230

Web-based videos of two semen samples with multiple microscopic fields showing live and immobilized sperm.

CLIA REGULATED		UNREGULATED	
ANALYTES		• Sperm motility • Sperm progressive motility	
2026 Ship Dates	May 26	October 19	Two shipments per year Two videos per shipment



# ONLINE TRAINING & COMPETENCY

WSLH PT brings you online training & competency in partnership with  
Medical Training Solutions (MTS) at the University of Washington



## Clinical Laboratory

Track training and competency of staff involved in all phases of laboratory testing: specimen collection, transport, processing and analysis.



## Point of Care

Administer and track competency tests for staff using microscopes, waived test kits, and instruments at the point of care.



## Specimen Collection

Track and document training and competency assessment for specimen collection staff.

Provide your staff customizable online training & competency courses. Used by 1500 laboratories, these programs feature:

- Streamlined tracking and documentation
- High quality multimedia content developed with the University of Washington
- Over 80 hours of Continuing Education (CE) credit
- Create your own tests
- Upload and track your existing documents
- New questions in each Competency topic are published biannually
- Automated login - staff receive automated email with a link to login directly to their assignments menu
- Automated email notifications - one click sends reminders to staff
- Simple test interfaces - Easy-to-use multiple choice format
- Track progress in real-time and generate printable reports

[View a demo video](#) or [submit an order form](#) online at [wslhpt.org](http://wslhpt.org).

## ORDER OPTIONS

All order options include access for up to 30 individuals.  
Please consult the price list for additional fees for more than 30 users.

### Order Options for Training Courses and Competency Tests

Items may be ordered separately or combined for savings.

View complete order options for Training Courses and Competency Tests on the 2026 Price List.

### Order Options for Microscopy Procedures (PPMP)

PPMP Training Courses and PPMP Competency Assessment may be ordered separately or combined for savings.

View order options on the 2026 Price List.

### Order Options for Waived Test Kits and POC Instruments (WPOC)

WPOC Competency Assessment may be ordered separately or as an add-on to any Training Course and/or Competency Test order.

View order options on the 2026 Price List.



# ONLINE TRAINING & COMPETENCY

## TRAINING COURSES AND COMPETENCY TESTS

Initial enrollment includes 1-30 users. Additional fee applies for over 30 users; see price list.

**Facility Fee** (more than 30 users) **PT80910**

### Training Courses and Competency Tests combined

**All of both Training and Competency** **PT80900**  
Individual Training and Competency combined See below

### Training Courses

Training courses are accredited for 1-3 hours of continuing education (CE) credit and can be used for initial training, cross training, remediation, and as a reference.

**All Training Courses** **PT80000**  
Individual Training Courses See below

<b>Blood Bank</b>		Crithidia	PT80530	Fire Safety	PT80300
Introduction to Transfusion	PT80010	Laboratory Methods	PT80050	Formaldehyde Safety	PT80330
Transfusion Safety:		Mouse Stomach Kidney	PT80440	HazCom Standard - GHS Update	PT80270
Ordering & Administering	PT80230	<b>Microbiology</b>		UV Safety	PT80320
Specimen Collection	PT80240	Gram Stain	PT80030	<b>Specimen Collection</b>	
Testing and Issuance	PT80250	Mycology	PT80070	Advanced Phlebotomy	PT80350
<b>Body Fluids</b>		Parasitology	PT80220	Basic Phlebotomy	PT80100
Amniotic Fluid	PT80210	<b>Micoscopy</b>		Blood Culture	PT80390
Cerebrospinal Fluid	PT80020	Microscopy	PT80080	Infection Control	PT80280
Seminal Fluid	PT80180	Molecular Diagnostics		Patient Complications	PT80510
Serous Fluid	PT80190	Introduction to Molecular Diagnostics	PT80420	Patient Identification	PT80360
Synovial Fluid	PT80200	<b>Orientation</b>		Pediatric Phlebotomy	PT80340
<b>Chemistry</b>		HIPAA 101	PT80560	Skin Puncture	PT80370
Acute Kidney Injury	PT80570	Introduction to Analytic QA	PT80150	Venipuncture	PT80380
Cardiac Markers	PT80160	Introduction to the Clinical Laboratory	PT80060	<b>Specimen Transport &amp; Processing</b>	
Protein Electrophoresis	PT80110	<b>Patient Safety</b>		Courier Transport	PT80410
Urinalysis	PT80140	Orientation to Patient Safety	PT80090	Specimen Processing	PT80130
<b>Coagulation</b>		<b>Safety</b>		Specimen Transport	PT80400
Coagulation	PT80170	Biosafety	PT80120	<b>Utilization Management</b>	
<b>Hematology</b>		Chemical Safety	PT80260	Case Studies in Laboratory	PT80540
Peripheral Blood	PT80040	Chemical Waste	PT80460	Stewardship	
<b>Immunology</b>		Dry Ice and Liquid Nitrogen Safety	PT80500	Managing Reference Labs	PT80550
ANCA	PT80450	Electrical Safety	PT80290		
Anti-nuclear Antibody	PT80430	Ergonomic Safety	PT80310		

### Competency Tests

Five or ten-question multiple choice competency assessment tests are published biannually on January 1st and July 1st in each category.

**All Competency Tests** **PT81000**  
Individual Competency Tests See below

<b>Pre-Analytic</b>		Transfusion Safety:		Hepatitis & HIV Ab	PT81070
Chain of Custody	PT81190	Ordering & Administering	PT81210	Microbiology	PT81090
Customer Service	PT81170	Specimen Collection	PT81220	Mouse Stomach Kidney	PT81260
Patient Safety	PT81100	<b>Analytic</b>		Protein Electrophoresis	PT81120
Pediatric Phlebotomy	PT81180	ANCA	PT81270	Semen Analysis	PT81230
Phlebotomy	PT81110	Anti-nuclear Antibody	PT81080	Toxicology	PT81150
Safety	PT81130	Chemistry	PT81030	Transfusion Safety: Testing and Issuance	PT81240
Specimen Processing	PT81140	Coagulation	PT81040	Transfusion Service: Basic	PT81010
Specimen Transport	PT81200	CSF/Serous	PT81020	Transfusion Service: Intermediate	PT81250
		Gram Stain	PT81050	Urinalysis	PT81160
		Hematology	PT81060		

# ONLINE TRAINING & COMPETENCY

## POINT OF CARE

### Microscopy Procedures (PPMP)

- Training Courses & Competency Assessment

PPMP Training Courses	PT80520
PPMP Competency Assessment	PT81900
PPMP Training and PPMP Competency together	PT81920
PPMP Competency Add-on to Training and/or Competency	PT81903

Includes:	PPMP Training	PPMP Competency
	<ul style="list-style-type: none"> <li>• Basic Microscopy</li> <li>• Fern Test</li> <li>• Pinworm</li> <li>• Qualitative Semen</li> </ul>	<ul style="list-style-type: none"> <li>• Skin KOH</li> <li>• Urine Sediment</li> <li>• Vaginal Wet Prep</li> <li>• Fecal WBC</li> <li>• Fern Test</li> <li>• Nasal Eosinophils</li> <li>• Pinworm</li> <li>• Qualitative Semen</li> <li>• Skin KOH</li> <li>• Urine Sediment</li> <li>• Vaginal KOH</li> <li>• Vaginal Wet Prep</li> </ul>

### Waived Test Kits & POC Instruments (WPOC)

- Competency Assessment

WPOC Competency Assessment	PT81910
WPOC Competency Add-on to Training and/or Competency	PT81913

Includes:	WPOC Competency Assessment	WPOC Competency Add-on to Training and/or Competency
<ul style="list-style-type: none"> <li>• Aceava Mono Cassette</li> <li>• Aceava Strep A</li> <li>• Accu-Chek Inform II</li> <li>• Alere hCG Cassette</li> <li>• Amniotest</li> <li>• AmniSure</li> <li>• Assure COVID-19 IgG/IgM</li> <li>• AVOXimeter 1000E</li> <li>• BiliChek</li> <li>• BinaxNow COVID-19 Ag Card</li> <li>• BinaxNow Influenza A&amp;B Card 2</li> </ul>	<ul style="list-style-type: none"> <li>• BinaxNOW RSV</li> <li>• Cepheid Xpress SARS-Co-V-2</li> <li>• Chemstrip 10 SG</li> <li>• Cholestech LDX</li> <li>• Clinitek Status - Clinitest hCG</li> <li>• Clinitek Status - Multistix 10SG</li> <li>• CLOtest</li> <li>• CoaguChek XS Plus PT/INR</li> <li>• ColoScreen</li> <li>• Consult Influenza A&amp;B Cassette</li> <li>• DCA Vantage</li> <li>• Determine HIV Ag Combo</li> <li>• ESR</li> </ul>	<ul style="list-style-type: none"> <li>• Gastrocult</li> <li>• HemaPrompt FG</li> <li>• Hemocult / Hemocult II</li> <li>• Hemocult Sensa</li> <li>• Hemochron Signature Elite</li> <li>• HemoCue 201 Glucose</li> <li>• HemoCue Hb 201 DM</li> <li>• HemoCue Hb 201+</li> <li>• i-STAT - ACT</li> <li>• i-STAT - Operations</li> <li>• i-STAT CG4+</li> <li>• i-STAT CG8+</li> <li>• ID Now COVID-19</li> </ul>

## MTS LECTURE LIBRARY SUBSCRIPTION

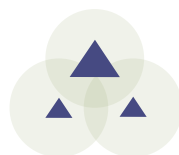
Subscription provides access to a monthly, live 1 hour webinar primarily focused on Laboratory Management topics.

Item PT81800

Subscribers may share the access with all employees in their organization. After participating in each webinar, users have the option to complete a test to earn 1.0 CE credits.

This subscription also provides the user access to the library of more than 60 archived lectures. Each lecture is archived and available on their MTS account approximately one month after the presentation date.

Upon completion of the archived lecture the user will be able to complete a 10 question test and then earn 1.0 CE credits.



# ASSAYED SAMPLE SETS

Assayed Sample Set products provide high-quality samples which can be used for test validation, method correlation, calibration verification/linearity, employee training and/or competency, troubleshooting a PT failure, or other QA activities.

To order Assayed Sample Sets, [submit an order form](#) online at [wslhpt.org](#).

## Blood Lead (VSPB)

Item PT07030

Five samples per shipment

Blood lead assayed sample sets include samples which cover the analytical range of most instruments with the target value and acceptable range for each sample. Orders include five samples in the following ranges: 2-5 ug/dL, 10-15 ug/dL, 20-25 ug/dL, 35-40 ug/dL, and 45-50 ug/dL. Sample ranges are subject to change due to sample availability.

## Blood Lead (VSBL)

Item PT07020

Three samples per shipment

Blood lead assayed sample sets include samples which cover the analytical range of most instruments with the target value and acceptable range for each sample. Orders include three samples in the following ranges: 2-5 ug/dL, 20-25 ug/dL, and 45-50 ug/dL. Sample ranges are subject to change due to sample availability.

## HIV (VSHV)

Item PT07010

Five liquid samples per shipment

Compatible with rapid and traditional testing methods along with automated combo assays used to detect HIV 1/2 antibody and p24 Antigen. Order includes 5 samples of either reactive or non-reactive targets.

For sample types other than HIV and Blood Lead, please call for pricing and availability OR [submit an order form](#) online at [wslhpt.org](#).



# ADDITIONAL PRODUCTS

---

## Calibration Verification/Linearity Products

Provided in partnership with AUDIT MicroControls. Calibration Verification/Linearity products can assist laboratories in meeting CLIA calibration verification requirements.

Purchase includes access to AUDITOR™, a QC data reduction software tool to view group peer data, evaluate, and create reports. Shipping available in the US.

[View available products](#) and [submit an order form](#) online at [wslhpt.org](http://wslhpt.org) or contact customer service at (800) 462-5261.

## Off-Schedule Proficiency Testing

WSLH PT can provide an off-schedule event in the case of PT failure (remedial) or for pre-licensure. Prior to ordering off-schedule events, contact your accrediting agency to confirm necessity of formal off-schedule PT and determine timeliness of need (immediate versus this quarter, 2-day versus priority overnight delivery), as these affect pricing.

Please call for pricing and availability: (800) 462-5261 or complete a [quote request](#) form online at [wslhpt.org](http://wslhpt.org).

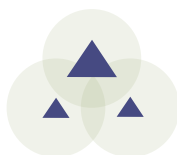
Supplies may be limited in quantity and shelf-life.

## Binders

WSLH PT offers 3-ring binders to organize your proficiency testing records, which must be retained for two years, unless longer retention is required. Binders contain dividers, preprinted labels, and blank labels.

PT07000

**Please indicate the number of binders desired on your order form.**



# SHIPPING SCHEDULE

Blood Gas				
Event	1	2	3	
Ships	03/02/26	06/22/26	10/26/26	* Ships events 1 and 2 only
Due	03/20/26	07/10/26	11/13/26	
QE Due	03/27/26	07/17/26	11/20/26	
Product Name		Item #	QE Item #	
Blood Gases / Electrolytes / Metabolites (BG)		PT01050	PT01060	
Blood Gas Hemoglobin / Hematocrit add-on (BGH)		PT01570	PT01580	
CO-Oximetry (CO)		PT01330	PT01340	
i-STAT Chemistries Plus (BGB)		PT01345	PT01347	
i-STAT Chemistries - Waived Methods (BGW) *		PT01400	PT01425	

Coag				
Event	1	2	3	
Ships	02/02/26	06/01/26	08/31/26	
Due	02/20/26	06/19/26	09/18/26	
QE Due	02/27/26	06/26/26	09/25/26	
Product Name			Item #	QE Item #
Coagulation Basic (CA)			PT02060	PT02070
Protime / INR - CoaguChek XS (PXS)			PT02350	PT02360
Protime / INR - i-STAT and Coag-Sense (PRC)			PT02370	PT02380
Coag QA				
Event	1		2	
Ships	02/02/26		08/31/26	
Due	02/20/26		09/18/26	
QE Due	02/27/26		09/25/26	
Product Name			Item #	QE Item #
Activated Clotting Time (CT)			PT02030	PT02052
D-dimer (DD)			PT02080	PT02105
INR - CoaguChek Waived (CXSW)			PT02320	PT02345
INR - Coag-Sense Waived (CW)			PT02310	PT02315

HemeReg				
Event	1	2	3	
Ships	02/02/26	06/01/26	08/31/26	* Ships events 1 and 3 only
Due	02/20/26	06/19/26	09/18/26	
QE Due	02/27/26	06/26/26	09/25/26	
Product Name		Item #	QE Item #	
Hematology - Cell Identification (XI)		PT02220		
Hematology - Comprehensive (AF3)		PT02270	PT02280	
Hematology - Comprehensive (AF4)		PT02285	PT02286	
Hematology - Comprehensive (AF5)		PT02290	PT02300	
Hematology - Limited Sysmex (AS)		PT02200	PT02210	
Hematology - Limited (AT)		PT02190	PT02195	
Hematology - PixCell (PIX)		PT02298	PT02299	
Reticulocytes - Beckman Coulter (RTB) *		PT02442	PT02444	
Reticulocytes - Sysmex (RTS) *		PT02432	PT02434	

Coag, Coag QA, and HemeReg are a combined shipment  
Delivery for these products will be via overnight courier.

Chem/Endo/Tx					
Event	1	2	3		
Ships	02/16/26	05/18/26	09/28/26	* Ships events 1 and 3 only	
Due	03/06/26	06/05/26	10/16/26		
QE Due	03/13/26	06/12/26	10/23/26		
Product Name				Item #	QE Item #
Alcohol/Ketones, serum (AM)				PT01000	PT01010
Bilirubin - Elevated (NB)				PT01430	PT01440
Blood Lead-3 Samples (BL) *				PT01070	PT01077
Blood Lead-5 Samples (PB)				PT01080	PT01085
Cardiac Markers - 3 sample (TM) *				PT01230	PT01255
Cardiac Markers - 5 sample (IE)				PT01260	PT01270
Chemistry/Endocrinology/Therapeutic Drugs 1-11 (CET)				PT01310	PT01326
Chemistry/Endocrinology/Therapeutic Drugs 12-21 (CET)				PT01314	PT01326
Chemistry/Endocrinology/Therapeutic Drugs 22-30 (CET)				PT01318	PT01326
Chemistry/Endocrinology/Therapeutic Drugs 31+ (CET)				PT01322	PT01326
Chemistry - Waived Methods (WC) *				PT01282	PT01284
hCG, serum - qualitative (HCG)				PT01480	PT01490
hCG, serum - qualitative (HCG) - Add on to CET				PT01495	
Hemoglobin A1c (GHR)				PT01524	PT01529
Hemoglobin A1c - Afinion (GHRA)				PT01525	PT01527
Immunoassay Chemistry (CS)				PT01683	PT01684
Immunoassay Chemistry B (CSB)				PT01712	PT01713
Tumor Markers (MT)				PT01752	PT01753
Urine Drug Adulteration Test (UDA)				PT01950	PT01955
Urine Drug Screen (UD)				PT01810	PT01835
Urine Drug Screen - Ethyl Glucuronide (ETG)				PT01980	
Special Chemistry					
Event	1		2		
Ships	02/16/26		09/28/26		
Due	03/06/26		10/16/26		
QE Due	03/13/26		10/23/26		
Product Name				Item #	QE Item #
Ammonia (NH)				PT01020	PT01045
Body Fluid Chemistry (PC)				PT01120	PT01145
Body Fluid pH - Visual (PH)				PT01150	PT01175
Procalcitonin (PCT)				PT01900	PT01905
Spinal Fluid Chemistry (SF)				PT01720	PT01745
Spinal Fluid Chemistry (SF) - Add on to PC				PT01722	
Urine Chemistry 1-3 (CU)				PT01780	PT01785
Urine Chemistry 4-10 (CU)				PT01786	PT01791
Urine Chemistry 11+ (CU)				PT01792	PT01797
Urine Chemistry Afinion (ACR)				PT01960	

Chem/Endo/Tx and Special Chemistry are a combined shipment



# SHIPPING SCHEDULE

Blood Bank				
Event	1	2	3	
Ships	02/23/26	06/15/26	10/05/26	* Ships events 1 and 3 only
Due	03/13/26	07/03/26	10/23/26	
QE Due	03/20/26	07/10/26	10/30/26	
Product Name		Item #		QE Item #
Blood Bank Comprehensive (AB)		PT04120		PT04130
Blood Bank Limited (AB)		PT04140		PT04150
Blood Bank Direct Antiglobulin Test (DAT) *		PT04145		PT04146

Delivery for Blood Bank will be via overnight courier.

Immunology				
Event	1	2	3	
Ships	01/20/26	05/11/26	08/24/26	* Ships events 1 and 3 only
Due	02/06/26	05/29/26	09/11/26	
QE Due	02/13/26	06/05/26	09/18/26	
Product Name		Item #		QE Item #
CRP Immunoserology (XP) *		PT04160		PT04185
Helicobacter pylori Serology (HL) *		PT04010		
Hepatitis (YB)		PT04190		
Hepatitis (YB) - Add on to HV or HVC		PT04195		
Hepatitis C - Waived Methods (YBC) *		PT04192		PT04193
HIV (HV)		PT04020		PT04030
HIV - Waived Methods (HIV) *		PT04040		PT04062
Infectious Disease Serology (MMV) *		PT04320		
Lyme Disease Serology (LY) *		PT04200		
Mono Immunoserology (ZM)		PT04210		
Mono Immunoserology Waived (MW) *		PT04220		PT04245
Mycoplasma Antibody (MP) *		PT04300		
Rheumatoid Factor (ZR)		PT04250		
Rubella IgM Immunoserology (XM) *		PT04330		
Rubella Immunoserology (XU)		PT04260		
Syphilis Serology (SS)		PT04270		PT04280
Syphilis Serology - Waived Methods (SSW) *		PT04272		PT04273

Semen				
Event	1	2		
Ships	05/26/26	10/19/26		
Due	06/12/26	11/06/26		
Product Name		Item #		
Amniotic Fluid Detection (AE)		PT03000		
Fetal Fibronectin (FFN)		PT03100		
Post-Vasectomy Semen Analysis (PV)		PT03140		
Post-Vasectomy with Motility (PVM)		PT03145		
Sperm Count (SP)		PT03200		
Sperm Morphology pre-stained slide (SMS)		PT03220		
Sperm Morphology unstained slide (SM)		PT03210		
Sperm Motility (MOT)		PT03230		

MiscQA_POC				
Event	1	2		
Ships	04/06/26	10/12/26		WBG QE (1895) due 2 weeks after due date
Due	04/24/26	10/30/26		
QE Due	05/01/26	11/06/26		
WBG QE Due	05/08/26	11/13/26		
Product Name		Item #		QE Item #
Body Fluid Cell Count - Automated (BFA)		PT03030		PT03037
Body Fluid Cell Count - Manual (BFM)		PT03040		
Body Fluid Microscopy (BF)		PT03050		
Chemistry - Waived Lipids and Glucose (WCL)		PT01288		PT01289
Fecal Lactoferrin (LF)		PT03060		
Fecal Occult Blood (OC)		PT03071		PT03074
Fecal Occult Blood (OC) - POC		PT03073		PT03074
Gastric Occult Blood (GO)		PT03110		PT03135
Glucose, Whole Blood (WBG)		PT01880		PT01895
Glucose, Whole Blood (WBG) - POC		PT01883		PT01895
Group A Strep - Waived Methods (WS)		PT05130		PT05155
Group A Strep - Waived Methods (WS) - POC		PT05135		PT05155
Hematocrit - Waived Methods (HW)		PT02150		PT02175
Hemoglobin - HemoCue Hb 301 and Hb 801 - Waived (HWH)		PT01455		PT01465
Hemoglobin - HemoCue Hb 301 and Hb 801 - Waived (HWH) - POC Add-on		PT01456		PT01465
Hemoglobin - Waived Methods (HWG)		PT01450		PT01475
Hemoglobin - Waived Methods (HWG) - POC Add-on		PT01451		PT01475
Hemoglobin A1c - Waived Methods (GH)		PT01532		PT01533
Hemoglobin A1c - Afinion - Waived Methods (GHA)		PT01534		PT01535
Mono Immunoserology - Waived Methods (MW) - POC Add-on		PT04222		
Provider Performed Microscopy (PM)		PT03170		PT03195
Provider Performed Microscopy (PM) - POC		PT03175		PT03195
Sedimentation Rate (SR)		PT02450		PT02465
Sedimentation Rate - Alcor and Alifax (SRI)		PT02520		PT02525
Sedimentation Rate - Sedimat 15, ESR STAT-6/PLUS (SRA)		PT02470		PT02485
Sickle Cell Screen (SK)		PT02490		PT02515
Urinalysis and Urine hCG (UR)		PT03260		PT03285
Urinalysis and Urine hCG (UR) - POC		PT03265		PT03285
Urine hCG (UH)		PT03291		PT03292
Urine Sediment Identification (SU)		PT03320		PT03345

# SHIPPING SCHEDULE

Bacti_Viral				
Event	1	2	3	
Ships #	01/05/26	05/04/26	08/17/26	# Mycology Culture modules ship 5 weeks ahead of other modules.
Ships	02/09/26	06/08/26	09/21/26	
Due	02/27/26	06/26/26	10/09/26	* Ships events 1 and 3 only
QE Due	03/06/26	07/03/26	10/16/26	
Product Name	Item #		QE Item #	
Mycology Comprehensive (MY) #	PT06070			
Mycology Dermatophyte (DM) #	PT06090			
Mycology Yeast (YE) #	PT06100			
Bacterial Vaginosis Detection - Waived Methods (BV) *	PT05005			
Bacteriology - Limited (MBC)	PT05036			
Bacteriology - Comprehensive (MBC)	PT05038			
Bacteriology - Blood Culture (MBC)	PT05039			
Blood Parasites (PAB)	PT06020			
Blood Pathogen Multiplex (BPM)	PT05480			
Bordetella by Molecular Methods (BOR)	PT05055			
C. difficile (CD)	PT05060		PT05065	
CT/GC/TV Detection (AC)	PT05070			
Enteric Pathogens (NP)	PT05080			
GI Multiplex (EP)	PT05380			
GI Multiplex Add-on (EP)	PT05381			
Giardia/Cryptosporidium Antigen (GI)	PT06030			
Gram Stain (GS)	PT05090		PT05100	
Group A Strep Antigen (SA)	PT05110		PT05120	
Group B Strep (SB)	PT05180		PT05185	
Helicobacter pylori Antigen, Stool (HPSA)	PT05401		PT05403	
Helicobacter pylori Rapid Urease (RUR) *	PT05500			
HSV Molecular (HSV)	PT06220			
KOH Slides (KOH) *	PT06230			
Legionella Antigen (LGA)	PT05440		PT05441	
Meningitis Multiplex (MEP)	PT05450			
MRSA (MR)	PT05200		PT05210	
Mycoplasma genitalium Molecular (MG)	PT05461			
Parasitology Comprehensive (PA)	PT06110			
Respiratory Multiplex (RP)	PT06240		PT06244	
Respiratory Multiplex Add-on (RP)	PT06241			
S. pneumoniae Antigen (BA)	PT05000			
SARS-CoV-2 Antigen (CV)	PT06288		PT06289	
SARS-CoV-2 Antigen- Waived Methods (CVW) *	PT06290		PT06295	
SARS-CoV-2/Flu Antigen Combo- Waived (CFW) *	PT06292		PT06293	
SARS-CoV-2 Molecular Liquid (CLM)	PT06300		PT06305	
SARS/Viral Molecular (CM)	PT06270		PT06275	
SARS/Viral Molecular-Waived Methods (CMW) *	PT06280		PT06285	
Shiga Toxin (SHG)	PT05241		PT05242	
Strep Identification (ST)	PT05170			
Throat/Urine Bacteriology (TU)	PT05250			
Throat/Urine Bacteriology Limited (TU)	PT05260			
Trichomonas - Waived Methods (TV) *	PT05310		PT05315	
Urine Culture (UC)	PT05270			
Vaginal Pathogens (VP)	PT05280		PT05290	
Viral - Limited (VA)	PT06150		PT06160	
Viral - Waived Methods (VCW) *	PT06170		PT06195	
Viral with Rotavirus (VA)	PT06200		PT06210	
VP Molecular (VPM)	PT05470			

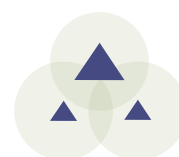
Bioterrorism Prep				
Event	1	2		
Ships	03/09/26	10/05/26		
Due	03/27/26	10/23/26		
Product Name		Item #		
Bioterrorism Preparedness Exercise (BPE)		PT06010		

CRE				
Event	1	2		
Ships	03/23/26	10/19/26		
Due	04/10/26	11/06/26		
QE Due	04/17/26	11/13/26		
Product Name		Item #	QE Item #	
Carbapenem Resistance Detection (CR)		PT05330	PT05335	
Carbapenem Resistance Detection (CR)		PT05300		

Frozen Micro				
Event	1	2		
Ships	04/13/26	10/05/26		
Due	05/01/26	10/23/26		
QE Due	05/08/26	10/30/26		
Product Name		Item #	QE Item #	
Rabies by DFA (RA)		PT06130	PT06137	
Rabies by dRIT (RA)		PT06140	PT06147	

Delivery for Frozen Micro will be via overnight courier.

Mycobacteriology				
Event	1	2	3	
Ships #	01/26/26	08/03/26		# Mycobacteriology Culture module ships 6 weeks ahead of other modules.
Ships	03/09/26	09/14/26		
Due	03/27/26	10/02/26		
QE Due	04/03/26	10/09/26		
Product Name			Item #	QE Item #
Mycobacteriology Culture (MB) #			PT06060	
Acid-Fast Stain (MA)			PT06000	
Acid-Fast Stain (MA) - Add on to MB			PT06005	
M. tuberculosis Molecular (TB)			PT06050	PT06055



# INDEX

## A

ABO group . . . . .	27
A/C ratio . . . . .	18
Acetaminophen . . . . .	14
Acetone. . . . .	11
6-AM (6-Acetylmorphine) . . . . .	19
Acid-fast stain . . . . .	45
Acinetobacter . . . . .	34
Activated clotting time (ACT) . . . . .	20
Activated partial thromboplastin time (APTT) . . . . .	20
Adenovirus . . . . .	35, 50, 51
Aerobic Actinomyces identification . . . . .	46
Aeromonas . . . . .	39
Alanine Aminotransferase (ALT) . . . . .	14, 15
Albumin . . . . .	14, 15
Albumin, body fluid . . . . .	12
Alcohol (ethanol) . . . . .	11
Alcohol (ethanol), urine . . . . .	19
Alkaline phosphatase (ALKP) . . . . .	14, 15
Alpha-fetoprotein . . . . .	14
Ammonia . . . . .	11
Amniotic fluid detection . . . . .	12, 52
Amphetamines. . . . .	19
Amylase. . . . .	14, 15
Amylase, body fluid . . . . .	12
Amylase, urine . . . . .	18
Anaerobic bacteria culture . . . . .	36
Andrology . . . . .	56, 57
Antibody identification, blood bank . . . . .	27
Anti-HIV . . . . .	29, 61
Antimicrobial susceptibility . . . . .	36, 43, 44
Aspartate Aminotransferase (AST) . . . . .	14, 15
Astrovirus. . . . .	35

## B

Bacterial identification . . . . .	34, 38, 39, 41, 48
Bacterial vaginosis detection . . . . .	37, 44
Bacteroides . . . . .	34
Bacteriology . . . . .	33-44
Barbiturates . . . . .	19
Benzodiazepines . . . . .	19
Beta-2 Microglobulin . . . . .	18
Beta-hydroxybutyrate. . . . .	11
Bilirubin, direct. . . . .	11, 14
Bilirubin, total . . . . .	11, 14, 15
Bilirubin, urine . . . . .	54
Bioterrorism Preparedness Exercise . . . . .	37
Blood Bank. . . . .	27
Blood culture . . . . .	36, 37
Blood Pathogen Multiplex . . . . .	38
Blood Gases . . . . .	9, 10
Blood Lead . . . . .	12, 61
Blood parasite identification . . . . .	47
BNP . . . . .	13
Bordetella . . . . .	34, 38
Borrelia burgdorferi (Lyme disease). . . . .	30
Buprenorphine. . . . .	19

## C

C. difficile. . . . .	34, 36, 38
C-peptide . . . . .	16
C-reactive protein (CRP). . . . .	13, 28
CA 125 . . . . .	18
CA 15-3. . . . .	18
CA 19-9. . . . .	18
CA 27.29 . . . . .	18
Calcium, ionized . . . . .	9
Calcium, total . . . . .	14, 15
Calcium, urine . . . . .	18
Campylobacter . . . . .	34, 39
Candida. . . . .	34, 44
Cannabinoids (THC) . . . . .	19
Carbamazepine . . . . .	14
Carbapenem resistance . . . . .	38
Carbon dioxide (CO <sub>2</sub> ). . . . .	9, 14, 15
Carboxyhemoglobin. . . . .	10
Carcinogenic embryonic antigen (CEA) . . . . .	17
Cardiac Markers . . . . .	13
Cell identification, body fluid. . . . .	52
Cell identification, hematology . . . . .	24
Chemistry - Body Fluid . . . . .	12
Chemistry - Immunoassay . . . . .	17
Chemistry - Spinal Fluid . . . . .	17
Chemistry - Urine . . . . .	18
Chemistry - Waived Methods . . . . .	10, 15
Chlamydia . . . . .	34, 39
Chloride . . . . .	9, 14, 15
Chloride, urine . . . . .	18
Cholesterol, body fluid . . . . .	12
Cholesterol, HDL . . . . .	14, 15
Cholesterol, LDL . . . . .	14, 15
Cholesterol, total . . . . .	14, 15
Citrobacter. . . . .	34
CK-MB . . . . .	13
Coagulation . . . . .	20, 21
Cocaine metabolites . . . . .	19
Colony Count (urine culture) . . . . .	36, 43, 44
Compatibility testing . . . . .	27
Coronavirus . . . . .	35
Cortisol . . . . .	14
Cotinine. . . . .	19
Creatine Kinase (CK) . . . . .	13, 14, 15
Creatinine . . . . .	9, 10, 14, 15
Creatinine, body fluid . . . . .	12
Creatinine, urine . . . . .	18, 19
Cryptococcus . . . . .	34
Cryptosporidium. . . . .	34, 47
Crystal identification, body fluid. . . . .	52
Cyclospora . . . . .	34
Cytomegalovirus (CMV) . . . . .	35

## D

DAT . . . . .	27
D-dimer . . . . .	13, 20
Dermatophyte . . . . .	46
DHEA Sulfate . . . . .	17
Digoxin . . . . .	14

## E

EDDP . . . . .	19
Endocrinology . . . . .	14
Entamoeba . . . . .	34
Enteric pathogen identification . . . . .	36
Enterobacter . . . . .	34
Enterococcus . . . . .	34
Enterovirus (EV) . . . . .	35
Eosinophils, nasal smear . . . . .	53
Erythrocyte count (RBC), blood. . . . .	23, 24
Erythrocyte count (RBC), body fluid . . . . .	52
Erythrocyte sedimentation rate . . . . .	25
Escherichia (E. coli) . . . . .	34, 39
Estradiol . . . . .	17
Ethanol (alcohol) . . . . .	11
Ethanol (alcohol), urine. . . . .	19
Ethyl Glucuronide (EtG) . . . . .	19

## F

Fecal occult blood. . . . .	53, 55
Fecal smear for leukocytes . . . . .	53
Fentanyl . . . . .	19
Fern test . . . . .	53
Ferritin . . . . .	17
Fetal fibronectin . . . . .	53
Folate . . . . .	17
Follicle stimulating hormone (FSH) . . . . .	17
Free thyroxine (FT4) . . . . .	14
Free triiodothyronine (FT3) . . . . .	14
Fungal Identification . . . . .	34, 38, 41

## G

Gamma glutamyltransferase (GGT) . . . . .	14, 15
Gardnerella detection. . . . .	44
Gastric occult blood. . . . .	53
Gentamicin. . . . .	14
GI multiplex . . . . .	39
Giardia . . . . .	34, 47
Glucose. . . . .	9, 14, 15
Glucose, body fluid . . . . .	12
Glucose, spinal fluid. . . . .	17
Glucose, urine . . . . .	18, 54
Glucose, whole blood. . . . .	15, 55
Glycohemoglobin (Hemoglobin A1c) . . . . .	16
Gram stain reaction/morphology . . . . .	36, 37, 40, 43, 44
Group A Strep . . . . .	36, 40, 43, 55
Group B Strep . . . . .	36, 40

## H

Haemophilus. . . . .	34
hCG, serum . . . . .	14
hCG, urine . . . . .	54
Helicobacter pylori (total antibody) . . . . .	28
Helicobacter pylori Antigen, Stool. . . . .	41
Hematocrit . . . . .	9, 10, 23, 24, 26
Hematology . . . . .	22-26
Hemoglobin . . . . .	9, 10, 23, 24, 26, 55
Hemoglobin A1c (Glycohemoglobin) . . . . .	16
Hemoglobin/Blood, urine . . . . .	54
Hepatitis - Anti-HAV, IgM. . . . .	28
Hepatitis - Anti-HBc (total antibody) . . . . .	28
Hepatitis - Anti-HBc, IgM . . . . .	28

Hepatitis - Anti-HBs . . . . .	28
Hepatitis - Anti-HCV . . . . .	28
Hepatitis - HBsAg . . . . .	28
Herpes simplex virus (HSV) . . . . .	35, 48
HIV (Anti-HIV) . . . . .	29, 61
HIV-p24 Antigen . . . . .	29, 61
Homocysteine . . . . .	17
hs-CRP . . . . .	13
Human herpesvirus 6 (HHV-6) . . . . .	35
Human metapneumovirus . . . . .	35
Human parechovirus (HPeV). . . . .	35
Human Rhinovirus/Enterovirus. . . . .	35

## I

IG . . . . .	23
IGFBP, amniotic fluid . . . . .	52
Immunohematology. . . . .	27
Immunology . . . . .	28-32
Infectious mononucleosis . . . . .	30, 55
Influenza . . . . .	35, 49, 50, 51
INR . . . . .	30, 21
Insulin . . . . .	17
Ionized calcium . . . . .	9
Ionized magnesium . . . . .	9
IPF . . . . .	23
IRF. . . . .	24
Iron binding capacity (TIBC) . . . . .	14
Iron, total . . . . .	14

## K

Ketones. . . . .	11
Ketones, urine . . . . .	54
Klebsiella . . . . .	34
KOH (skin & vaginal) . . . . .	53
KOH Preparation . . . . .	46

## L

Lactate (Lactic acid) . . . . .	9, 14
Lactate (Lactic acid), spinal fluid . . . . .	16
Lactate dehydrogenase (LDH) . . . . .	14
Lactate dehydrogenase (LDH), body fluid. . . . .	12
Lactic acid . . . . .	17
Lactoferrin . . . . .	52
Lead, blood . . . . .	12, 61
Legionella . . . . .	41
Leukocyte count (WBC), blood . . . . .	23, 24
Leukocyte count (WBC), body fluid. . . . .	52
Leukocyte esterase . . . . .	54
Leukocytes, fecal smear . . . . .	53
Lipase. . . . .	14
Listeria . . . . .	34
Lithium . . . . .	14
Luteinizing hormone (LH) . . . . .	17
Lyme disease (Borrelia burgdorferi). . . . .	30

# INDEX

## M

Magnesium . . . . .	14
Magnesium, ionized . . . . .	9
Magnesium, urine . . . . .	18
MCH . . . . .	23, 24
MCHC . . . . .	23, 24
MCV . . . . .	23, 24
MDMA (Ecstasy) . . . . .	19
Measles IgG, IgM . . . . .	29
Meningitis Multiplex . . . . .	41
Methadone . . . . .	19
Methamphetamines . . . . .	19
Methaqualone . . . . .	19
Methemoglobin . . . . .	10
Methicillin-resistant Staph aureus (MRSA) . . . . .	36, 42
Microalbumin . . . . .	18
Mold, yeast, and yeast-like organism identification . . . . .	46
Mononucleosis infectious . . . . .	30, 55
MPV . . . . .	23, 24
Multiplex Panels . . . . .	38, 39, 41, 48
Mumps IgG, IgM . . . . .	29
Mycobacteriology, tuberculosis . . . . .	45
Mycology . . . . .	34, 46
Mycoplasma . . . . .	34, 42
Mycoplasma antibody . . . . .	30
Myoglobin . . . . .	13

## N

Nasal smear for eosinophils . . . . .	53
Neisseria gonorrhoeae . . . . .	36, 39
Neisseria meningitidis . . . . .	34
Nitrites . . . . .	19, 54
Norovirus . . . . .	35
Nucleated red blood cells (NRBC) . . . . .	23

## O

Occult blood, fecal . . . . .	53, 55
Occult blood, gastric . . . . .	53
Opiates . . . . .	19
Osmolality . . . . .	14
Osmolality, urine . . . . .	18
Oxidants . . . . .	19
Oxycodone . . . . .	19
Oxyhemoglobin . . . . .	10

## P

p24 Antigen . . . . .	29, 61
PAMG-1 protein, amniotic fluid . . . . .	52
Parainfluenza . . . . .	35
Parasite identification . . . . .	34, 39
Parasitology . . . . .	34, 47
pCO <sub>2</sub> . . . . .	9
pH, amniotic fluid . . . . .	12
pH, blood . . . . .	9
pH, body fluid . . . . .	12
pH, urine . . . . .	19, 54
Phencyclidine (PCP) . . . . .	19
Phenobarbital . . . . .	14
Phenytoin (Dilantin) . . . . .	14
Phosphorus . . . . .	14, 15

Phosphorus, urine . . . . .	18
Pinworm preparation . . . . .	53
Platelet count . . . . .	23, 24
Plesiomonas . . . . .	34, 39
pO <sub>2</sub> . . . . .	9
Post-vasectomy . . . . .	56
Potassium . . . . .	9, 14, 15
Potassium, urine . . . . .	18
PP12/AFP, amniotic fluid . . . . .	52
Prealbumin . . . . .	17
proBNP . . . . .	13
Procalcitonin . . . . .	17
Progesterone . . . . .	17
Prolactin . . . . .	17
Propoxyphene . . . . .	19
Prostate-specific antigen (PSA), free . . . . .	18
Prostate-specific antigen (PSA), total . . . . .	17
Protein, body fluid . . . . .	12
Protein, spinal fluid . . . . .	17
Protein, total . . . . .	14, 15
Protein, urine . . . . .	18, 54
Proteus . . . . .	34
Protine (PT) . . . . .	20, 21
Provider Performed Microscopy . . . . .	53, 55
Pseudomonas . . . . .	34
PTH, intact . . . . .	17

## R

Rabies Antigen . . . . .	48
Rapid Urease . . . . .	41
RBC (Erythrocyte count), blood . . . . .	23, 24
RBC (Erythrocyte count), body fluid . . . . .	52
RDW . . . . .	23, 24
Re-He . . . . .	24
Resistance genes . . . . .	35, 38
Respiratory Multiplex . . . . .	48
Respiratory syncytial virus (RSV) . . . . .	35, 50, 51
Reticulocyte count . . . . .	24
Rh (D) typing . . . . .	27
Rheumatoid factor . . . . .	31
Rhinovirus/Enterovirus . . . . .	35
Rifampin resistance screen (M. tuberculosis) . . . . .	45
Rotavirus . . . . .	35, 51
Rubella IgG . . . . .	31
Rubella IgM . . . . .	31
Rupture of fetal membranes . . . . .	12, 52

## S

Salicylate . . . . .	14
Salmonella . . . . .	34, 39
Sapovirus . . . . .	35
SARS-CoV-2 . . . . .	35, 48, 49, 50
Serratia . . . . .	34
Shiga toxin . . . . .	42
Shigella . . . . .	39
Sickle cell screen . . . . .	26
Sodium . . . . .	9, 14, 15
Sodium, urine . . . . .	18
Specific gravity . . . . .	19, 54
Sperm count . . . . .	56
Sperm morphology . . . . .	57
Sperm motility . . . . .	56, 57
Sperm progressive motility . . . . .	57

# INDEX

Staphylococcus . . . . . 34, 42  
 Stenotrophomonas . . . . . 34  
 Stool parasite identification . . . . . 47  
 Strep A . . . . . 36, 40, 43, 55  
 Strep B . . . . . 36, 40  
 Strep identification/culture. . . . . 36, 43  
 Streptococcus . . . . . 34, 42  
 Syphilis . . . . . 32

## T

T3 Uptake / T-Uptake . . . . . 14  
 Testosterone, total . . . . . 17  
 Theophylline . . . . . 14  
 Therapeutic Drugs . . . . . 14  
 Thyroid-stimulating hormone (TSH) . . . . . 14  
 Thyroxine (T4) . . . . . 14  
 TIBC (Iron binding capacity) . . . . . 14  
 Tobramycin . . . . . 14  
 Tramadol . . . . . 19  
 Transferrin . . . . . 17  
 Trichomonas detection . . . . . 39, 44, 47  
 Tricyclic antidepressants . . . . . 19  
 Triglycerides . . . . . 14, 15  
 Triglycerides, body fluid . . . . . 12  
 Triiodothyronine (T3) . . . . . 14  
 Troponin I . . . . . 13  
 Troponin T . . . . . 13  
 Tumor Markers . . . . . 14

## U

UIBC . . . . . 14  
 Unexpected antibody detection . . . . . 27  
 Urea nitrogen, blood (BUN) . . . . . 9, 14, 15  
 Urea nitrogen, urine . . . . . 18  
 Urease . . . . . 41  
 Uric acid . . . . . 14, 15  
 Uric acid, urine . . . . . 18  
 Urinalysis . . . . . 54, 55  
 Urine adulteration test . . . . . 19  
 Urine culture . . . . . 36, 43, 44  
 Urine drug screen . . . . . 19  
 Urine hCG . . . . . 55, 55  
 Urine sediment . . . . . 53, 54  
 Urobilinogen . . . . . 54

## V

Vaginal wet preparation. . . . . 53  
 Valproic acid . . . . . 14  
 Vancomycin . . . . . 14  
 Vancomycin-resistant Enterococcus (VRE) . . . . . 36  
 Varicella zoster IgG, IgM . . . . . 29  
 Varicella zoster virus (VZV). . . . . 35  
 Vibrio . . . . . 34, 39  
 Viral identification . . . . . 35, 39, 41, 48  
 Virology . . . . . 35, 48, 49, 50, 51  
 Vitamin B12 . . . . . 17  
 25-OH Vitamin D, total . . . . . 17

## W

WBC (Leukocyte count), blood . . . . . 23, 24  
 WBC (Leukocyte count), body fluid. . . . . 52  
 WBC differential - automated . . . . . 23, 24  
 Whole Blood Glucose. . . . . 15, 55

## Y


Yeast and yeast-like organism identification . . . . . 46  
 Yersinia . . . . . 34, 39





# NOTES

Add important dates and reminders here



## TO DO

[illegible]

**Questions? Contact WSLH PT at (800) 462-5261 or at [ptservice@slh.wisc.edu](mailto:ptservice@slh.wisc.edu)**

# YOUR LAB OUR MISSION

## WSLH Proficiency Testing

---



With WSLH PT, you receive reliable, affordable, and easy-to-use laboratory proficiency testing products with rapid access to results.

You may request a free no-obligation quote at any time. We also offer additional services throughout the year, including:

- Calibration verification products
- Assayed Samples
- Off-schedule and pre-licensure events
- Online training and competency courses

We are your PT provider, backed by a national public health lab and a Big Ten university. Our unique affiliations provide you with the technical expertise and educational resources to set you up for PT success.

In 1966, the Wisconsin State Lab of Hygiene created proficiency testing programs to improve laboratory quality. From these efforts, WSLH PT was established. Today, we serve clinical laboratories like yours throughout the United States, and globally.

WSLH PT is approved by CMS, and accepted by CAP, COLA, and The Joint Commission. To learn more, please visit our site at [wslhpt.org](http://wslhpt.org).

# 2026 SHIPPING SCHEDULE

## JANUARY

Su	M	Tu	W	Th	F	Sa
				1	2	3
4	5	6	7	8	9	10
11	12	13	14	15	16	17
18	19	20	21	22	23	24
25	26	27	28	29	30	31

5: Bacti\_Viral1 (Mycology culture modules)  
20: Immunology1  
26: Mycobacteriology1 (culture module)

## FEBRUARY

Su	M	Tu	W	Th	F	Sa
1	2	3	4	5	6	7
8	9	10	11	12	13	17
15	16	17	19	19	20	21
22	23	24	25	26	27	28

2-3: Coag1, Coag QA1, Heme Reg1  
9-10: Bacti\_Viral1  
16-17: Chem/Endo/Tx1, Special Chemistry1  
23: Blood Bank1

## MARCH

Su	M	Tu	W	Th	F	Sa
1	2	3	4	5	6	7
8	9	10	11	12	13	14
15	16	17	18	19	20	21
22	23	24	25	26	27	28
29	30	31				

2: Blood Gas1  
9: Bioterrorism Prep1, Mycobacteriology1  
23: CRE1

## APRIL

Su	M	Tu	W	Th	F	Sa
			1	2	3	4
5	6	7	8	9	10	11
12	13	14	15	16	17	18
19	20	21	22	23	24	25
26	27	28	29	30		

6-7: MiscQA\_POC1  
13: Frozen Micro1

## MAY

Su	M	Tu	W	Th	F	Sa
					1	2
3	4	5	6	7	8	9
10	11	12	13	14	15	16
17	18	19	20	21	22	23
24	25	26	27	28	29	30
31						

4: Bacti\_Viral2 (Mycology culture modules)  
11: Immunology2  
18-19: Chem/Endo/Tx2  
26: Semen1

## JUNE

Su	M	Tu	W	Th	F	Sa
	1	2	3	4	5	6
7	8	9	10	11	12	13
14	15	16	17	18	19	20
21	22	23	24	25	26	27
28	29	30				

1-2: Coag2, Heme Reg2  
8-9: Bacti\_Viral2  
15: Blood Bank2  
22: Blood Gas2

## JULY

Su	M	Tu	W	Th	F	Sa
			1	2	3	4
5	6	7	8	9	10	11
12	13	14	15	16	17	18
19	20	21	22	23	24	25
26	27	28	29	30	31	

No shipments

## AUGUST

Su	M	Tu	W	Th	F	Sa
						1
2	3	4	5	6	7	8
9	10	11	12	13	14	15
16	17	18	19	20	21	22
23	24	25	26	27	28	29
30	31					

3: Mycobacteriology2 (culture module)  
17: Bacti\_Viral3 (Mycology culture modules)  
24: Immunology3  
8/31-9/1: Coag3, Coag QA2, Heme Reg3

## SEPTEMBER

Su	M	Tu	W	Th	F	Sa
		1	2	3	4	5
6	7	8	9	10	11	12
13	14	15	16	17	18	19
20	21	22	23	24	25	26
27	28	29	30			

8/31-9/1: Coag3, Coag QA2, Heme Reg3  
14: Mycobacteriology2  
21-22: Bacti\_Viral3  
28-29: Chem/Endo/Tx3, Special Chemistry2

## OCTOBER

Su	M	Tu	W	Th	F	Sa
				1	2	3
4	5	6	7	8	9	10
11	12	13	14	15	16	17
18	19	20	21	22	23	24
25	26	27	28	29	30	31

5: Blood Bank3, Bioterrorism Prep2, Frozen Micro2  
12-13: MiscQA\_POC2  
19: Semen2, CRE2  
26: Blood Gas3

## NOVEMBER

Su	M	Tu	W	Th	F	Sa
1	2	3	4	5	6	7
8	9	10	11	12	13	14
15	16	17	18	19	20	21
22	23	24	25	26	27	28
29	30					

No shipments

## DECEMBER

Su	M	Tu	W	Th	F	Sa
		1	2	3	4	5
6	7	8	9	10	11	12
13	14	15	16	17	18	19
20	21	22	23	24	25	26
27	28	29	30	31		

No shipments  
Happy New Year!