

WSLH Proficiency Testing
WISCONSIN STATE LABORATORY OF HYGIENE
UNIVERSITY OF WISCONSIN-MADISON

CLINICAL PRODUCT CATALOG

2025



A
LEGACY
OF
EXCELLENCE
AND
SERVICE

1966 - Present

Under the leadership of Dr. Stanley L. Inhorn, the Wisconsin State Lab of Hygiene creates a proficiency testing program in 1966 to serve medical laboratories.

After the Clinical Laboratory Improvement Amendments (CLIA), WSLH PT expands drastically, serving thousands of laboratories across the United States.

"Service and excellence, it's in our DNA. When you partner with us, you are choosing a PT provider who is going to give you the support you need to achieve your quality assurance goals."

Mike Argall, MT (ASCP), Director of WSLH PT

TABLE OF CONTENTS

4	Why WSLH PT?
8	Chemistry - Blood Gas/Oximetry
10	Chemistry - General
19	Coagulation
21	Hematology
27	Immunohematology - Blood Bank
28	Immunology
33	Microbiology
36	Microbiology - Bacteriology
45	Microbiology - Mycobacteriology
46	Microbiology - Mycology
47	Microbiology - Parasitology
48	Microbiology - Virology
51	Urinalysis/Microscopy/Misc.
55	Andrology
57	Online Training and Competency
60	Assayed Sample Sets
61	Additional Products
62	Shipping Schedule
67	Index



YOUR LAB, OUR MISSION

Reliable, affordable and easy-to-use proficiency testing with rapid access to results.

WSLH PT, backed by a national public health laboratory and a Big Ten university.

Approved by CMS and accepted by CAP, COLA, and The Joint Commission.

OUR HISTORY

In 1966, WSLH PT was developed by the Wisconsin State Lab of Hygiene (WSLH) to create proficiency testing programs that improved laboratory quality. Today, as part of this national public health laboratory, we are proud to provide you with the highest quality service to meet your needs.

Based in Madison, Wisconsin, we are affiliated with the state's flagship higher education institution, the University of Wisconsin-Madison. Our unique affiliations provide you with the technical expertise and educational resources to set you up for PT success.

OUR COMMUNITY

Each of our clinical proficiency testing programs has a dedicated Medical Technologist with at least 5 years of laboratory bench experience, extensive instrument knowledge, and exceptional customer service skills to meet your laboratory's needs. WSLH PT is approved by CMS and accepted by CAP, COLA, and The Joint Commission.



WHY WSLH PT?

Reliable, affordable, & easy-to-use proficiency testing products

I placed a small order; however, you treated me with the professionalism and the attention as if I had place a large order.

-Jason C.

Working with WSLH was an excellent experience.

-Cathy S.

Great customer service!

-Warren B.



HOW CAN WE BEST SERVE YOU?

We want to know! Contact us at (800) 462-5261 or ptservice@slh.wisc.edu

Enrollment made easy

Request a free, no-obligation quote anytime at wslhpt.org

NEW CUSTOMERS

Submit a [New Customer PT Enrollment Form](#)

To order, submit a form online at wslhpt.org. Once you have submitted your form, customer service will assign your lab a WSLH PT ID number and email you an enrollment confirmation. You can expect to receive a confirmation letter and a customized shipping schedule via email within 24-48 hours of order receipt. Note: Experienced medical technologists are available Monday-Friday, 8:00am-4:30pm (CST) to assist you at (800) 462-5261.

CURRENT CUSTOMERS

2025 Enrollment

Current customers will receive a new catalog and a re-enrollment packet that contains a list of programs that the lab was enrolled in the previous year. Review and edit selections where necessary and return forms for processing. You can expect to receive a confirmation letter and a customized shipping schedule via email once re-enrollment has been processed.

Changes to Active Enrollment or Account Information

To update contact or agency information, or add or drop PT enrollment at any time, please complete a [Customer Change Form](#) at wslhpt.org. Account changes require written documentation. You will receive an updated enrollment confirmation reflecting the requested changes.


SHIPPING INFORMATION

WSLH PT provides a customized shipping schedule with your enrollment confirmation. Customers with a valid email address under "Shipping Information" on the Enrollment Form will receive an email notification for each shipment. Most packages will arrive within 2 days of the scheduled ship date. Overnight shipments are designated on the shipping calendar. Your facility must make arrangements to accept delivery and have the package routed immediately to the appropriate location for proper handling and storage.

If you do not receive samples within 2 days of the scheduled ship date, please contact WSLH PT at (800) 462-5261. Please notify WSLH PT in advance of any address changes. Import permits or customs forms must be provided by international customers at least 30 calendar days prior to the first scheduled shipment.

CANCELLATION OF PRODUCTS

To cancel products, complete a [Customer Change Form](#) online at wslhpt.org. All cancellations must be submitted in writing at least 30 days prior to a scheduled shipment date. A credit will be applied to your account, if appropriate. The annual processing fee is non-refundable. Refund requests will be handled on a case-by-case basis by the accounts receivable department.



To assure participation in all shipments, enrollment and order forms must be received by December 1st. Contact us for sample availability after December 1st.

A NOTE FOR CAP ACCREDITED CUSTOMERS

We are accepted by the CAP Laboratory Accreditation Program (LAP) to fulfill PT requirements for most analytes and procedures. Analytes and procedures not accepted are indicated in this catalog with an asterisk (*) after the analyte name.

Analytes noted as educational in the catalog will not fulfill CAP PT requirements. Enrollment in a CAP approved PT program is required for these analytes.

You can determine if enrollment in PT is required by reviewing the information on your CAP Laboratory Activity Menu report. You should carefully review this information before placing your order with us.



PT

PRIMARY PRODUCTS include one set of samples and reporting for one set of results per shipment unless otherwise specified. Analytes and procedures listed under the Regulated column are regulated under CLIA. Add-on products may only be ordered in conjunction with specific primary products.

QUALITY EVALUATION (QE) PRODUCTS include one set of samples and reporting for one set of results per shipment unless otherwise specified. These products can only be ordered in conjunction with a corresponding primary product and may be ordered in multiples. Result sets reported for any QE products may be ordered for QA purposes, to test a secondary method, or for additional sample volume. Contact WSLH PT for QE products not listed.

ADDITIONAL PRODUCTS include Assayed Sample Sets, Calibration Verification/Linerity Products, Off-Schedule Proficiency Testing, and Online Training and Competency.

PRODUCTS

NEW FOR 2025

PAGE	PRODUCT NAME
------	--------------

15	Hemoglobin A1c - Afinion (GHRA) 5 samples / 3 shipments per year intended for the Afinion HBA1C Dx Non-waived cartridge.
----	---

55	Post-Vasectomy with Motility (PVM)
----	------------------------------------

NEW CLIA REQUIREMENTS

CLIA has made regulation changes that will begin in 2025. As a result, we have made configuration changes to some of our products to meet the new requirements.

CHEMISTRY

▲ Blood Gas / Oximetry

Blood Gases / Electrolytes / Metabolites (BG)

3mL aqueous samples compatible with most blood gas instruments including ABL, Cobas, EPOC, GEM, i-STAT, IRMA, OPTI, RAPIDLab, RAPIDPoint and OTHER systems.

Item PT01050
QE Product Item PT01060

	CLIA REGULATED	UNREGULATED
ANALYTES	<ul style="list-style-type: none"> • Carbon dioxide, total • Chloride • Creatinine • Glucose • pCO₂ 	<ul style="list-style-type: none"> • pH • pO₂ • Potassium • Sodium • Urea nitrogen (BUN)

UNREGULATED
<ul style="list-style-type: none"> • Ionized calcium • Ionized magnesium * • Lactate

* Analyte(s) not yet accepted by the CAP Laboratory Accreditation Program

2025 Ship Dates	March 3	June 23	October 27	Three shipments per year Five samples per shipment
------------------------	---------	---------	------------	---

Blood Gas Hemoglobin / Hematocrit (BGH), add-on to BG

2.5mL aqueous samples. This product can only be ordered in conjunction with BG above. IL GEM and ABL90 FLEX users should report these analytes under the CO-Oximetry product on page 9. i-STAT users are encouraged to order BGB (below) instead of BG+BGH.

Add-on to BG Item PT01570
QE Product Item PT01580

	CLIA REGULATED	UNREGULATED
ANALYTES	<ul style="list-style-type: none"> • Hematocrit 	<ul style="list-style-type: none"> • Hemoglobin

2025 Ship Dates	March 3	June 23	October 27	Three shipments per year Five samples per shipment
------------------------	---------	---------	------------	---

i-STAT Chemistries PLUS (BGB)

2.5mL BLUE aqueous samples intended for use on i-STAT systems. Includes Hemoglobin and Hematocrit. Single set of five samples.

Item PT01345
QE Product Item PT01347

	CLIA REGULATED	UNREGULATED
ANALYTES	<ul style="list-style-type: none"> • Carbon dioxide, total • Chloride • Creatinine • Glucose • Hematocrit • Hemoglobin 	<ul style="list-style-type: none"> • pCO₂ • pH • pO₂ • Potassium • Sodium • Urea nitrogen (BUN)

UNREGULATED
<ul style="list-style-type: none"> • Ionized calcium • Lactate

2025 Ship Dates	March 3	June 23	October 27	Three shipments per year Five samples per shipment
------------------------	---------	---------	------------	---

CHEMISTRY

▲ Blood Gas / Oximetry

CHEMISTRY - BG/OX

CO-Oximetry (CO)

2mL samples of stabilized hemoglobin solution.

Item PT01330
QE Product Item PT01340

	CLIA REGULATED	UNREGULATED
ANALYTES	<ul style="list-style-type: none"> • Hematocrit • Hemoglobin, total 	<ul style="list-style-type: none"> • Carboxyhemoglobin • Oxyhemoglobin • Methemoglobin

2025 Ship Dates	March 3	June 23	October 27	Three shipments per year Five samples per shipment
-----------------	---------	---------	------------	---

i-STAT Chemistries - Waived Methods (BGW)

2.5mL aqueous samples intended for waived i-STAT cartridges. Laboratories using non-waived methods should refer to BGB or BG products on prior page.

Item PT01400
QE Product Item PT01425

	CLIA REGULATED	UNREGULATED
ANALYTES		<ul style="list-style-type: none"> • Creatinine

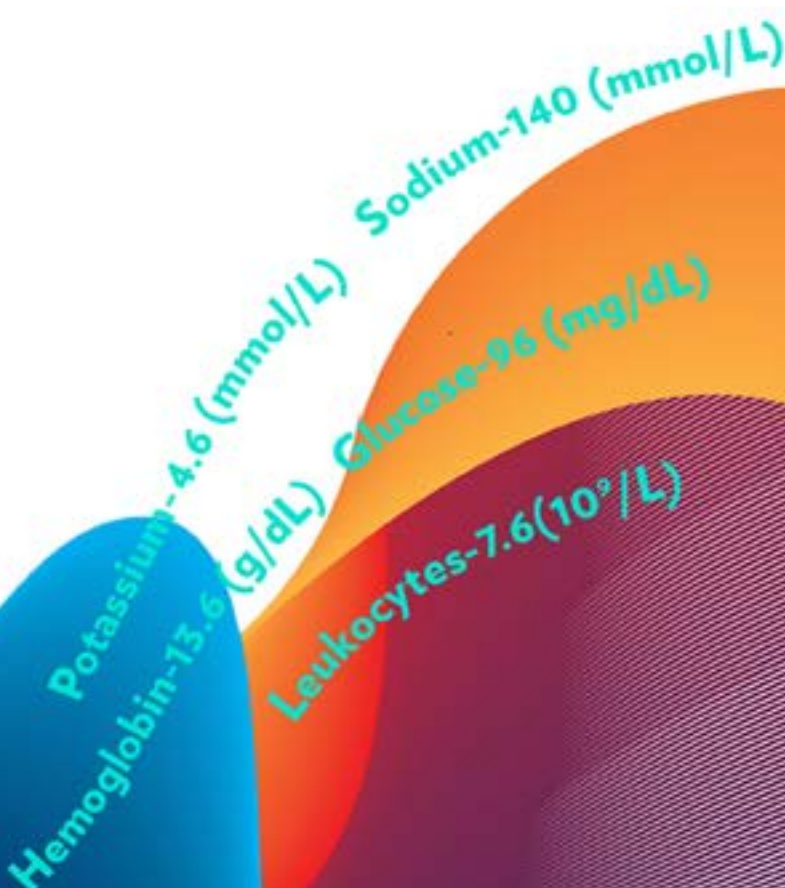
2025 Ship Dates	March 3	June 23	Two shipments per year Three samples per shipment
-----------------	---------	---------	--

LET YOUR DATA FLOW

WSLH PT's DATA UPLOAD

Automate quantitative data entry with PT Data Upload

Learn more at wslhpt.org



CHEMISTRY

▲ General

Alcohol/Ketones, serum (AM)

2mL liquid samples. Beta-hydroxybutyrate is compatible with instrumentation using Stanbio reagent as well as with POC meters such as Abbott Xceed Pro and Stanbio STAT-site M.

Item PT01000
QE Product Item PT01010

	CLIA REGULATED	UNREGULATED
ANALYTES	<ul style="list-style-type: none"> Alcohol (ethanol) 	<ul style="list-style-type: none"> Acetone (qualitative) Acetone (semi-quantitative) Beta-hydroxybutyrate

2025 Ship Dates March 17 June 30 September 29 Three shipments per year
Five samples per shipment

Ammonia (NH)

2mL liquid samples.

Item PT01020
QE Product Item PT01045

	CLIA REGULATED	UNREGULATED
ANALYTES		<ul style="list-style-type: none"> Ammonia

2025 Ship Dates February 17 August 25 Two shipments per year
Three samples per shipment

Bilirubin - Elevated (NB)

1mL liquid samples containing elevated levels of bilirubin similar to those found in neonates and liver disease.

Item PT01430
QE Product Item PT01440

	CLIA REGULATED	UNREGULATED
ANALYTES	<ul style="list-style-type: none"> Bilirubin, total 	<ul style="list-style-type: none"> Bilirubin, direct

2025 Ship Dates March 17 June 30 September 29 Three shipments per year
Five samples per shipment

NOTE: For laboratories reporting Total Bilirubin with NB and CET, the CET Bilirubin score will be reported to accreditation agencies.

Blood Lead - 5 Samples (PB)

1mL whole blood samples.

Item PT01080
QE Product Item PT01085

	CLIA REGULATED		UNREGULATED	
ANALYTES	• Blood lead			
2025 Ship Dates	March 17	June 30	September 29	Three shipments per year Five samples per shipment

Blood Lead - 3 Samples (BL)

1mL whole blood samples.

Item PT01070
QE Product Item PT01077

	CLIA REGULATED		UNREGULATED	
ANALYTES			• Blood lead	
2025 Ship Dates	March 17	September 29	Two shipments per year Three samples per shipment	

Body Fluid Chemistry (PC)

3mL liquid samples intended to simulate pleural, peritoneal, and miscellaneous body fluids.

Item PT01120
QE Product Item PT01145

	CLIA REGULATED		UNREGULATED	
ANALYTES			<ul style="list-style-type: none"> • Albumin • Amylase • Cholesterol • Creatinine • Glucose 	<ul style="list-style-type: none"> • LDH • pH (quantitative) • Protein • Triglycerides
2025 Ship Dates	February 17	August 25	Two shipments per year Three samples per shipment	

NOTE: For spinal fluid, see SF product on page 16. For urine, see CU on page 17.

Body Fluid pH - Visual (PH)

0.5mL liquid samples intended for pH measurement by color comparison methods including amniotic and miscellaneous body fluid pH measurement. Samples are compatible with non-nitrazine and nitrazine test strips, swabs, and paper.

Item PT01150
QE Product Item PT01175

	CLIA REGULATED		UNREGULATED	
ANALYTES			<ul style="list-style-type: none"> • pH (color comparison) • pH interpretation (ruptured, not ruptured) 	
2025 Ship Dates	February 17	August 25	Two shipments per year Three samples per shipment	

NOTE: For urine pH, see UR product on page 53.

For Amniotic Fluid Detection by protein methods, see AE product on page 51

CHEMISTRY

▲ General

Cardiac Markers - 5 Samples (IE)

1.5mL liquid samples. Compatible with automated methods such as Abbott i-STAT, Triage, Architect, Beckman Coulter, Roche, Siemens, and Vitros.

ANALYTES	CLIA REGULATED		UNREGULATED	
		<ul style="list-style-type: none"> • BNP • proBNP • CK-MB 	<ul style="list-style-type: none"> • CK, total • hs-CRP • Troponin I 	<ul style="list-style-type: none"> • D-dimer (Triage only) • Myoglobin

2025 Ship Dates	March 17	June 30	September 29	Three shipments per year Five samples per shipment
------------------------	----------	---------	--------------	---

Item PT01260
QE Product Item PT01270

NOTE: For CRP methods screening for non-specific inflammatory disease, see XP product on page 28.

D-dimer in this module is for laboratories using the Triage. Other instrumentation, see DD product on page 19.

For laboratories reporting CK total with IE and CET, the CET CK total score will be transmitted to accreditation agencies.

CAP accredited labs must test five samples for non-waived methods except for D-dimer and Myoglobin.

Cardiac Markers - 3 Samples (TM)

1.5mL liquid samples. Compatible with automated methods such as Abbott i-STAT, Triage, Architect, Beckman Coulter, Roche, Siemens, and Vitros.

ANALYTES	CLIA REGULATED		UNREGULATED	
				<ul style="list-style-type: none"> • BNP (waived only) • D-dimer (Triage only) • Myoglobin

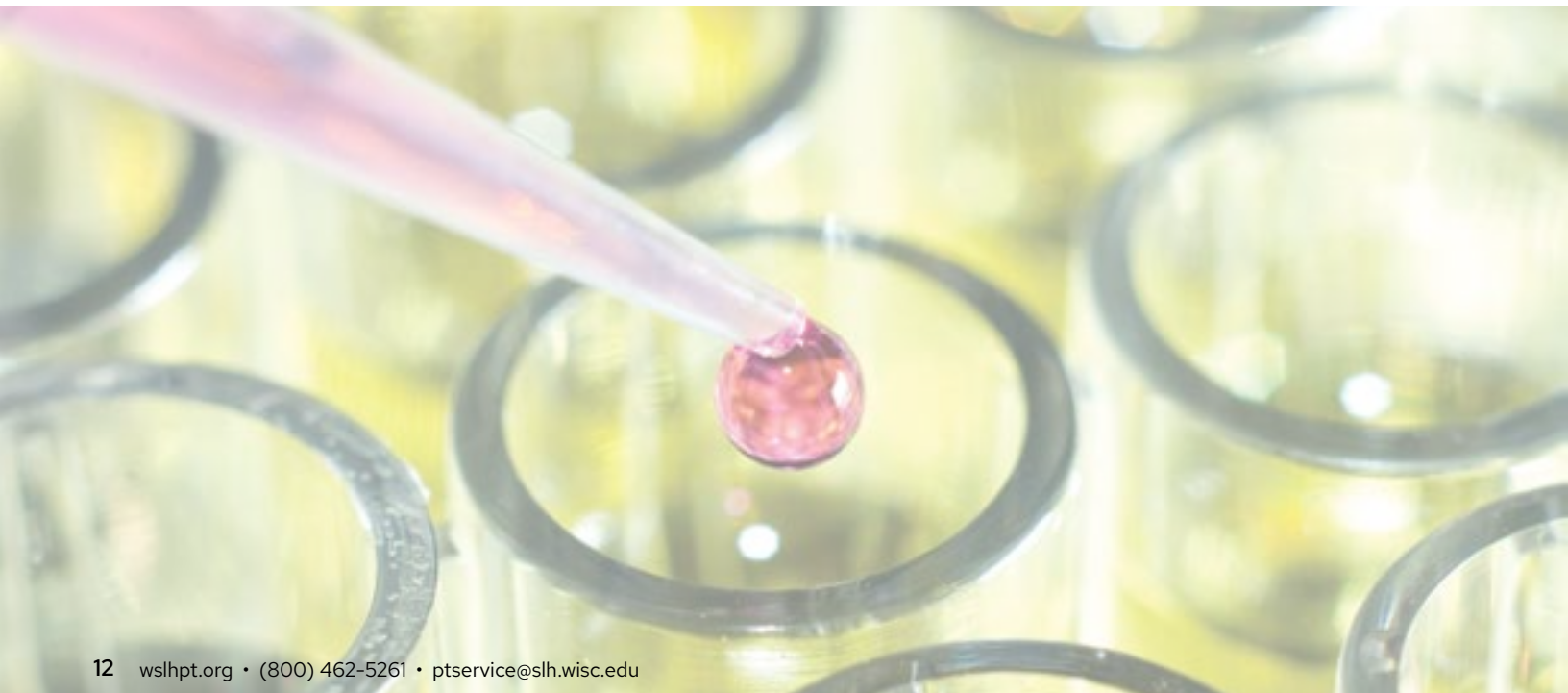
2025 Ship Dates	March 17	September 29	Two shipments per year Three samples per shipment
------------------------	----------	--------------	--

Item PT01230
QE Product Item PT01255

NOTE: For CRP methods screening for non-specific inflammatory disease, see XP product on page 28.

D-dimer in this module is for laboratories using the Triage. Other instrumentation, see DD product on page 19.

CAP accredited labs must test five samples for non-waived methods except for D-dimer and Myoglobin.



Chemistry/Endocrinology/Therapeutic Drugs (CET)

5mL liquid samples.

Order by number of analytes reported

- 1-11 - Item PT01310
- 12-21 - Item PT01314
- 22-30 - Item PT01318
- 31+ - Item PT01322
- QE Product Item PT01326

NOTE: i-STAT users may enroll in CET for hCG quantitative. For i-STAT chemistry analytes, see BG, BGB, or BGW products on page 8, 9.

	CLIA REGULATED	UNREGULATED	
ANALYTES	<ul style="list-style-type: none"> • Acetaminophen • ALT • Albumin • ALKP • Amylase • AST • Bilirubin, total • Calcium, total • Carbamazepine • Chloride • Cholesterol, HDL • Cholesterol, LDL (measured) • Cholesterol, total • CO₂ • Creatine Kinase (CK) • Creatinine • Digoxin • GGT • Glucose • hCG, quantitative (serum) 	<ul style="list-style-type: none"> • Iron, total • LDH • Lithium • Magnesium • Phenytoin (Dilantin) • Phosphorus • Potassium • Protein, total • Salicylate • Sodium • TSH • T4, free (FT4) • T4, total • TIBC, measured • Triglycerides • Urea nitrogen (BUN) • Uric acid • Valproic acid • Vancomycin 	<ul style="list-style-type: none"> • Bilirubin, direct • Cholesterol, LDL (calculated) • Lactate • Lipase • Osmolality • T3, free (FT3) • TIBC, calculated • UIBC *

* Analyte(s) not yet accepted by the CAP Laboratory Accreditation Program

CET Educational Analytes

The following analytes are offered as educational challenges only. CLIA regulated laboratories must enroll with another PT provider in order to meet CLIA regulations for these analytes.

	EDUCATIONAL		
ANALYTES	<ul style="list-style-type: none"> • <i>Alpha-fetoprotein</i> • <i>Cortisol</i> • <i>Gentamicin</i> 	<ul style="list-style-type: none"> • <i>Phenobarbital</i> • <i>T3, total</i> • <i>T-Uptake</i> 	<ul style="list-style-type: none"> • <i>Theophylline</i> • <i>Tobramycin</i>

2025 Ship Dates March 17 June 30 September 29 Three shipments per year
Five samples per shipment

hCG, serum - Qualitative (HCG)

1mL liquid samples.

Item PT01480
Add-on to any CET Product Item PT01495
QE Product Item PT01490

	CLIA REGULATED	UNREGULATED
ANALYTES	<ul style="list-style-type: none"> • hCG, qualitative (serum) 	

NOTE: For laboratories reporting both hCG quantitative and hCG qualitative, only the hCG quantitative score will be transmitted to accreditation agencies.

2025 Ship Dates March 17 June 30 September 29 Three shipments per year
Five samples per shipment

CHEMISTRY

▲ General

Chemistry - Waived Methods (WC)

5mL liquid samples intended for instruments using waived cartridges such as CardioChek (reflectance test strips only), Cholestech LDX, Roche Accutrend, and Abaxis Piccolo (waived). Laboratories using Abaxis Piccolo non-waived cartridges should refer to the CET product on the previous page.

ANALYTES	CLIA REGULATED	UNREGULATED
		<ul style="list-style-type: none"> • ALT • Albumin • ALKP • Amylase • AST • Bilirubin, total • Calcium, total • CO₂ • Chloride • Cholesterol, HDL • Cholesterol, LDL (calculated) • Cholesterol, total
		<ul style="list-style-type: none"> • Creatine Kinase (CK) • Creatinine • GGT • Glucose • Phosphorus • Potassium • Protein, total • Sodium • Triglycerides • Urea nitrogen (BUN) • Uric acid

2025 Ship Dates March 17 September 29 Two shipments per year
Three samples per shipment

Item PT01282
QE Product Item PT01284

NOTE: For i-STAT chemistry waived cartridges, see BGW product on page 9.

For CardioChek eGLU (glucose electrochemical test strips), see WBG 3 sample product below.

Glucose Whole Blood (WBG)

Whole blood samples intended for waived glucose meters. Samples are compatible with blood glucose meters and instruments, including HemoCue glucose systems, used for ancillary/point of care testing.

ANALYTES	CLIA REGULATED	UNREGULATED
		<ul style="list-style-type: none"> • Whole Blood Glucose (meters) • Whole Blood Glucose (instruments) *

2025 Ship Dates March 31 October 13 Two shipments per year
Three samples per shipment

Item PT01880
QE Product Item PT01895
Additional Samples Item PT01884

NOTE: QE product allows reporting for up to 20 result sets. Additional Samples product is samples only, no result reporting. Product available in POC Package -see page 54.

* Analyte(s) not yet accepted by the CAP Laboratory Accreditation Program. This applies only to instruments that test glucose using whole blood (i.e. HemoCue glucose systems and CardioChek eGLU test strip). This does not apply to glucose meters.

Hemoglobin A1c (GHR)

1mL whole blood samples. These samples are NOT compatible with the Afinion analyzer. See GHRA product below.

Item PT01524
QE Product Item PT01529

	CLIA REGULATED	UNREGULATED
ANALYTES	• Hemoglobin A1c	

2025 Ship Dates	March 17	June 30	September 29	Three shipments per year Five samples per shipment
------------------------	----------	---------	--------------	---

Hemoglobin A1c - Waived Methods (GH)

1mL whole blood samples. These samples are NOT compatible with the Afinion analyzer. See GHA product below.

Item PT01500
QE Product Item PT01522

	CLIA REGULATED	UNREGULATED
ANALYTES		• Hemoglobin A1c

2025 Ship Dates	February 17	August 25		Two shipments per year Three samples per shipment
------------------------	-------------	-----------	--	--

Hemoglobin A1c - Afinion (GHRA)

0.5mL whole blood samples intended for use with the Afinion using the Afinion Dx moderately complex cartridge.

Item PT01525
QE Product Item PT01527

NEW!

	CLIA REGULATED	UNREGULATED
ANALYTES	• Hemoglobin A1c	

2025 Ship Dates	March 17	June 30	September 29	Three shipments per year Five samples per shipment
------------------------	----------	---------	--------------	---

Hemoglobin A1c - Afinion - Waived Methods (GHA)

0.5mL whole blood samples intended for use with the Afinion analyzer. Afinion analyzers using the Afinion Dx moderately complex cartridge must enroll in the 5 sample GHRA program above.

Item PT01530
QE Product Item PT01555

	CLIA REGULATED	UNREGULATED
ANALYTES		• Hemoglobin A1c

2025 Ship Dates	February 17	August 25		Two shipments per year Three samples per shipment
------------------------	-------------	-----------	--	--

CHEMISTRY

▲ General

Immunoassay Chemistry (CS)

5mL liquid samples.

Item PT01683
QE Product Item PT01684

	CLIA REGULATED	UNREGULATED
ANALYTES	<ul style="list-style-type: none"> • CEA • Estradiol • Ferritin • Folate • FSH • LH 	<ul style="list-style-type: none"> • Progesterone • Prolactin • PSA, total • Testosterone, total • Vitamin B12

* Analyte(s) not yet accepted by the CAP Laboratory Accreditation Program

2025 Ship Dates	March 17	June 30	September 29	Three shipments per year Five samples per shipment
------------------------	----------	---------	--------------	---

Immunoassay Chemistry B (CSB)

Lyophilized serum samples. A 2.0mL class A volumetric pipette and reagent-grade water are recommended for reconstitution.

Item PT01712
QE Product Item PT01713

	CLIA REGULATED	UNREGULATED
ANALYTES	<ul style="list-style-type: none"> • PTH, intact 	<ul style="list-style-type: none"> • 25-OH Vitamin D, total • C-peptide * • Insulin *

* Analyte(s) not yet accepted by the CAP Laboratory Accreditation Program

2025 Ship Dates	March 17	June 30	September 29	Three shipments per year Five samples per shipment
------------------------	----------	---------	--------------	---

Procalcitonin (PCT)

Lyophilized serum samples. A 2.0mL class A volumetric pipette and reagent-grade water are recommended for reconstitution.

Item PT01900
QE Product Item PT01905

	CLIA REGULATED	UNREGULATED
ANALYTES		<ul style="list-style-type: none"> • Procalcitonin

2025 Ship Dates	February 17	August 25	Two shipments per year Three samples per shipment
------------------------	-------------	-----------	--

Spinal Fluid Chemistry (SF)

2mL liquid samples.

Item PT01720
Add-on to PC Product Item PT01722
QE Product Item PT01745

	CLIA REGULATED	UNREGULATED
ANALYTES		<ul style="list-style-type: none"> • Chloride • Glucose • Lactic acid* • Protein

* Analyte(s) not yet accepted by the CAP Laboratory Accreditation Program

2025 Ship Dates	February 17	August 25	Two shipments per year Three samples per shipment
------------------------	-------------	-----------	--

Tumor Markers (MT)

2mL liquid samples.

	CLIA REGULATED	UNREGULATED
ANALYTES	<ul style="list-style-type: none"> • CA 125 	<ul style="list-style-type: none"> • Beta-2 Microglobulin * • CA 15-3 * • CA 19-9 * • CA 27.29 * • PSA, free *

NOTE: CEA and PSA, total are available under the Immunoassay Chemistry (CS) product on page 16.

* Analyte(s) not yet accepted by the CAP Laboratory Accreditation Program

2025 Ship Dates	March 17	June 30	September 29	Three shipments per year Five samples per shipment
------------------------	----------	---------	--------------	---

Urine Chemistry (CU)

10mL liquid samples. These samples are NOT compatible with the Afinion analyzer. See ACR product below.

	CLIA REGULATED	UNREGULATED
ANALYTES		<ul style="list-style-type: none"> • A/C ratio, quantitative • A/C ratio, semi-quantitative • Amylase • Calcium • Chloride • Creatinine, quantitative • Creatinine, semi-quantitative * • Glucose • Magnesium • Microalbumin, quantitative • Microalbumin, semi-quantitative * • Osmolality • Phosphorus • Potassium • Protein • Sodium • Urea nitrogen • Uric acid

Order by number of analytes reported

- 1-3 - Item PT01780
- QE Product 1-3 - Item PT01785
- 4-10 - Item PT01786
- QE Product 4-10 - Item PT01791
- 11+ - Item PT01792
- QE Product 11+ - Item PT01797

* Analyte(s) not yet accepted by the CAP Laboratory Accreditation Program

2025 Ship Dates	February 17	August 25	Two shipments per year Three samples per shipment
------------------------	-------------	-----------	--

Urine Chemistry - Afinion (ACR)

3mL liquid samples intended for use with the Afinion analyzer.

	CLIA REGULATED	UNREGULATED
ANALYTES		<ul style="list-style-type: none"> • A/C ratio • Creatinine * • Microalbumin

* Analyte(s) not yet accepted by the CAP Laboratory Accreditation Program

2025 Ship Dates	February 17	August 25	Two shipments per year Three samples per shipment
------------------------	-------------	-----------	--

Item PT01960

CHEMISTRY

▲ General

Urine Drug Adulteration Test (UDA)

Item PT01950
QE Product Item PT01955

10mL liquid samples for use with urine adulterant detection methods.

	CLIA REGULATED	UNREGULATED
ANALYTES		<ul style="list-style-type: none"> • Creatinine • Nitrites • Oxidants
		<ul style="list-style-type: none"> • pH • Specific gravity

2025 Ship Dates	March 17	June 30	September 29	Three shipments per year Two samples per shipment
------------------------	----------	---------	--------------	--

Urine Drug Screen (UD)

Item PT01810
QE Product Item PT01835

10mL liquid samples intended for the qualitative detection of drugs using urine immunoassay screening procedures.

	CLIA REGULATED	UNREGULATED
ANALYTES		<ul style="list-style-type: none"> • 6-Acetylmorphine (6-AM) • Amphetamines • Barbiturates • Benzodiazepines • Buprenorphine • Cannabinoids (THC) • Cocaine metabolites • Cotinine • EDDP • Ethanol (Alcohol) • Fentanyl
		<ul style="list-style-type: none"> • Hydrocodone * • MDMA (Ecstasy) • Methadone • Methamphetamines • Methaqualone • Opiates • Oxycodone • Phencyclidine (PCP) • Propoxyphene • Tramadol * • Tricyclic antidepressants

2025 Ship Dates	March 17	June 30	September 29	Three shipments per year Two samples per shipment
------------------------	----------	---------	--------------	--

* Laboratories accredited by CAP contact WSLH PT about acceptance for these analytes.

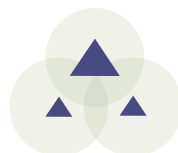
Urine Drug Screen - Ethyl Glucuronide (ETG)

Item PT01980

5mL liquid samples intended for the qualitative detection of EtG in urine.

	CLIA REGULATED	UNREGULATED
ANALYTES		<ul style="list-style-type: none"> • Ethyl Glucuronide (EtG)

2025 Ship Dates	March 17	June 30	September 29	Three shipments per year Two samples per shipment
------------------------	----------	---------	--------------	--



COAGULATION

Activated Clotting Time (CT)

Lyophilized samples with paired diluents, calcium chloride solutions (activator), and method-differentiated handling instructions. Compatible with Hemochron, HemoTec, i-STAT, Medtronic HMS and OTHER methods.

Item PT02030
QE Product Item PT02052

	CLIA REGULATED	UNREGULATED
ANALYTES		<ul style="list-style-type: none"> Activated clotting time (ACT)

2025 Ship Dates February 3 September 8 Two shipments per year
Three samples per shipment

Coagulation - Basic (CA)

Lyophilized plasma samples. Use of a 1.0mL class A volumetric pipette and reagent-grade water are recommended for reconstitution. NOT compatible with whole blood systems (i-STAT, ITC, CoaguChek, or Coag-Sense). INR Calculation "dry exercise" is available for CAP-accredited labs.

Item PT02060
QE Product Item PT02070

NOTE: For laboratories reporting both PT and INR, the INR will be reported to accreditation agencies.

	CLIA REGULATED	UNREGULATED
ANALYTES	<ul style="list-style-type: none"> Activated partial thromboplastin time (APTT) 	<ul style="list-style-type: none"> Protime (PT) Fibrinogen INR

2025 Ship Dates February 3 June 2 September 8 Three shipments per year
Five samples per shipment

D-dimer (DD)

1.0mL liquid samples. Compatible with most D-dimer kits including Sysmex CA and CS, Triage, Stago, and OTHER methods.

Item PT02080
QE Product Item PT02105

NOTE: Customers using Triage for cardiac markers, see IE or TM product on page 12.

	CLIA REGULATED	UNREGULATED
ANALYTES		<ul style="list-style-type: none"> D-dimer, quantitative

2025 Ship Dates February 3 September 8 Two shipments per year
Three samples per shipment

COAGULATION

COAGULATION

Protime / INR - Whole Blood, CoaguChek XS (PXS)

Lyophilized samples intended for non-waived Roche CoaguChek XS systems. Also available to waived system users wanting more challenges per year. Waived system users reporting only INR may consider CXSW product.

	CLIA REGULATED		UNREGULATED	
ANALYTES	<ul style="list-style-type: none"> • Protime (PT) • INR 			
2025 Ship Dates	February 3	June 2	September 8	Three shipments per year Five samples per shipment

Item PT02350
QE Product Item PT02360

NOTE: For laboratories reporting both PT and INR, the INR will be reported to accreditation agencies.

INR - CoaguChek - Waived Methods (CXSW)

Lyophilized samples for CoaguChek XS or CoaguChek XS Plus (waived use) ONLY.

	CLIA REGULATED		UNREGULATED	
ANALYTES			<ul style="list-style-type: none"> • INR 	
2025 Ship Dates	February 3	September 8		Two shipments per year Three samples per shipment

Item PT02320
QE Product Item PT02345

Protime / INR - Whole Blood, i-STAT and Coag-Sense (PRC)

Lyophilized samples intended for i-STAT systems; i-STAT users may report both Protime and INR for proficiency testing purposes. Also compatible with Coag-Sense systems where non-waived users may report both Protime and INR. Coag-Sense waived system users reporting only INR may consider CW product.

	CLIA REGULATED		UNREGULATED	
ANALYTES	<ul style="list-style-type: none"> • Protime (PT) • INR 			
2025 Ship Dates	February 3	June 2	September 8	Three shipments per year Five samples per shipment

Item PT02370
QE Product Item PT02380

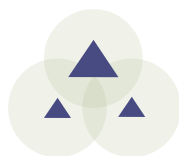
NOTE: For laboratories reporting both PT and INR, the INR will be reported to accreditation agencies.

INR - Coag-Sense - Waived Methods (CW)

Lyophilized samples intended for Coag-Sense (waived use).

	CLIA REGULATED		UNREGULATED	
ANALYTES			<ul style="list-style-type: none"> • INR 	
2025 Ship Dates	February 3	September 8		Two shipments per year Three samples per shipment

Item PT02310
QE Product Item PT02315



HEMATOLOGY

Hematology samples are instrument specific.

Please use the table below to choose the correct sample/instrument combination.

INSTRUMENTS

	CBC OR CBC WITH AUTO DIFF					RETICULOCYTES		
	AF3	AF4	AF5	AS	AT	RT	RTB	RTS
Abbott CELL-DYN 1600, 1700, 1800, Emerald (Not compatible with Emerald 22)					X			
Abbott CELL-DYN Sapphire						X		
ABX Micros 60 and ES 60					X			
ABX Pentra XLR						X		
Beckman Coulter AcT diff/diff2					X			
Beckman Coulter DxH 500, DxH 520, DxH 560	X							
Beckman Coulter DxH 600, DxH 690T, DxH 800, DxH 900, HmX, LH 500, LH 700 series		X					X	
Drew Scientific D3					X			
Manual Reticulocyte methods						X		
Medonic M series, Medonic CA-620					X			
Siemens ADVIA 120/2120							X	
Sysmex XS1000i			X					
Sysmex series: XE, XN, XN-L, XT			X					X
Sysmex KX-21/21N, pocH 100i, XP-300				X				

HEMATOLOGY

HEMATOLOGY

Hematology - Comprehensive (AF)

Whole blood samples for automated instruments with a 5-6 part differential.

	CLIA REGULATED	UNREGULATED
ANALYTES	<ul style="list-style-type: none"> Erythrocyte count (RBC) Hematocrit Hemoglobin 	<ul style="list-style-type: none"> Leukocyte count (WBC) Platelet count WBC differential, automated

AF3 Item PT02270
 QE Product AF3 Item PT02280
 AF4 Item PT02285
 QE Product AF4 Item PT02286
 AF5 Item PT02290
 QE Product AF5 Item PT02300

NOTE: Item numbers are instrument specific.
 See instrument table on page 21.

2025 Ship Dates	February 3	June 2	September 8	Three shipments per year Five samples per shipment
------------------------	------------	--------	-------------	---

Hematology - Limited Sysmex (AS)

Whole blood samples for Sysmex instruments with a 2-3 part differential.

	CLIA REGULATED	UNREGULATED
ANALYTES	<ul style="list-style-type: none"> Erythrocyte count (RBC) Hematocrit Hemoglobin 	<ul style="list-style-type: none"> Leukocyte count (WBC) Platelet count WBC differential, automated

Item PT02200
 QE Product Item PT02210

NOTE: See instrument table on page 21.

2025 Ship Dates	February 3	June 2	September 8	Three shipments per year Five samples per shipment
------------------------	------------	--------	-------------	---

Hematology - Limited (AT)

Whole blood samples for automated instruments with a 2-3 part differential or no differential.

	CLIA REGULATED	UNREGULATED
ANALYTES	<ul style="list-style-type: none"> Erythrocyte count (RBC) Hematocrit Hemoglobin 	<ul style="list-style-type: none"> Leukocyte count (WBC) Platelet count WBC differential, automated

Item PT02190
 QE Product Item PT02195

NOTE: See instrument table on page 21.

2025 Ship Dates	February 3	June 2	September 8	Three shipments per year Five samples per shipment
------------------------	------------	--------	-------------	---

Hematology - Cell Identification (XI)

Seven images (paper and online versions).

ANALYTES	CLIA REGULATED	UNREGULATED
	• Cell identification	• Cell identification, educational

2025 Ship Dates	February 3	June 2	September 8	Three shipments per year Five regulated and two educational challenges per shipment
------------------------	------------	--------	-------------	--

Item PT02220

NOTE: For laboratories reporting both an automated differential and cell identification, both scores will be transmitted to accreditation agencies.

Reticulocytes - Manual and Some Automated (RT)

Whole blood samples for manual methods and some automated instruments.

ANALYTES	CLIA REGULATED	UNREGULATED
		• Reticulocyte count, percent

2025 Ship Dates	February 3	September 8	Two shipments per year Three samples per shipment
------------------------	------------	-------------	--

Item PT02420

QE Product Item PT02425

NOTE: See instrument table on page 21.

Reticulocytes - Beckman Coulter (RTB)

Whole blood samples for Beckman Coulter instruments.

ANALYTES	CLIA REGULATED	UNREGULATED
		• IRF • Reticulocyte count, absolute • Reticulocyte count, percent

2025 Ship Dates	February 3	September 8	Two shipments per year Three samples per shipment
------------------------	------------	-------------	--

Item PT02442

QE Product Item PT02444

NOTE: See instrument table on page 21.

Reticulocytes - Sysmex (RTS)

Whole blood samples for Sysmex instruments.

ANALYTES	CLIA REGULATED	UNREGULATED
		• IRF • Reticulocyte count, absolute • Reticulocyte count, percent • Re-He

2025 Ship Dates	February 3	September 8	Two shipments per year Three samples per shipment
------------------------	------------	-------------	--

Item PT02432

QE Product Item PT02434

NOTE: See instrument table on page 21.

HEMATOLOGY

Erythrocyte Sedimentation Rate (ESR) Instruments

Sed Rate samples are instrument specific. Please use the table below to choose the correct sample/instrument combination.

INSTRUMENTS	SR	SRI	SRA
	ALCOR iSED and miniISED, Sysmex Alifax		X
Polymedco Sedimat 15, ESR STAT-6, ESR STAT PLUS			X
ESR-Auto Plus, Polymedco Sediplast, and all others	X		

Sedimentation Rate (SR)

Whole blood samples intended for manual and automated erythrocyte sedimentation rate methods.

Item PT02450
QE Product Item PT02465

NOTE: See instrument table above.

ANALYTES	CLIA REGULATED	UNREGULATED
2025 Ship Dates	March 31	October 13
		Two shipments per year Three samples per shipment

Sedimentation Rate - iSED and Alifax (SRI)

Whole blood samples intended for the iSED, miniISED, and Alifax.

Item PT02520
QE Product Item PT02525

NOTE: See instrument table above.

ANALYTES	CLIA REGULATED	UNREGULATED
2025 Ship Dates	March 31	October 13
		Two shipments per year Three samples per shipment

Sedimentation Rate - Sedimat 15, ESR STAT-6 and STAT PLUS (SRA)

Whole blood samples intended for Polymedco Sedimat 15, ESR STAT-6, and ESR STAT PLUS instruments.

Item PT02470
QE Product Item PT02485

NOTE: See instrument table above.

ANALYTES	CLIA REGULATED	UNREGULATED
2025 Ship Dates	March 31	October 13
		Two shipments per year Three samples per shipment

HEMATOLOGY

Fetal Red Cell Detection (HBF)

Item PT04350

1mL whole blood samples intended for fetal maternal hemorrhage detection methods. Compatible with fetal rosette screen (qualitative) and Kleihauer-Betke stain (quantitative).

CLIA REGULATED	UNREGULATED
ANALYTES	<ul style="list-style-type: none">• Fetal Screen (qualitative) *• Hemoglobin F (quantitative) *

* Analyte(s) not yet accepted by the CAP Laboratory Accreditation Program

2025 Ship Dates	April 21	October 27	Two shipments per year Three samples per shipment
------------------------	----------	------------	--

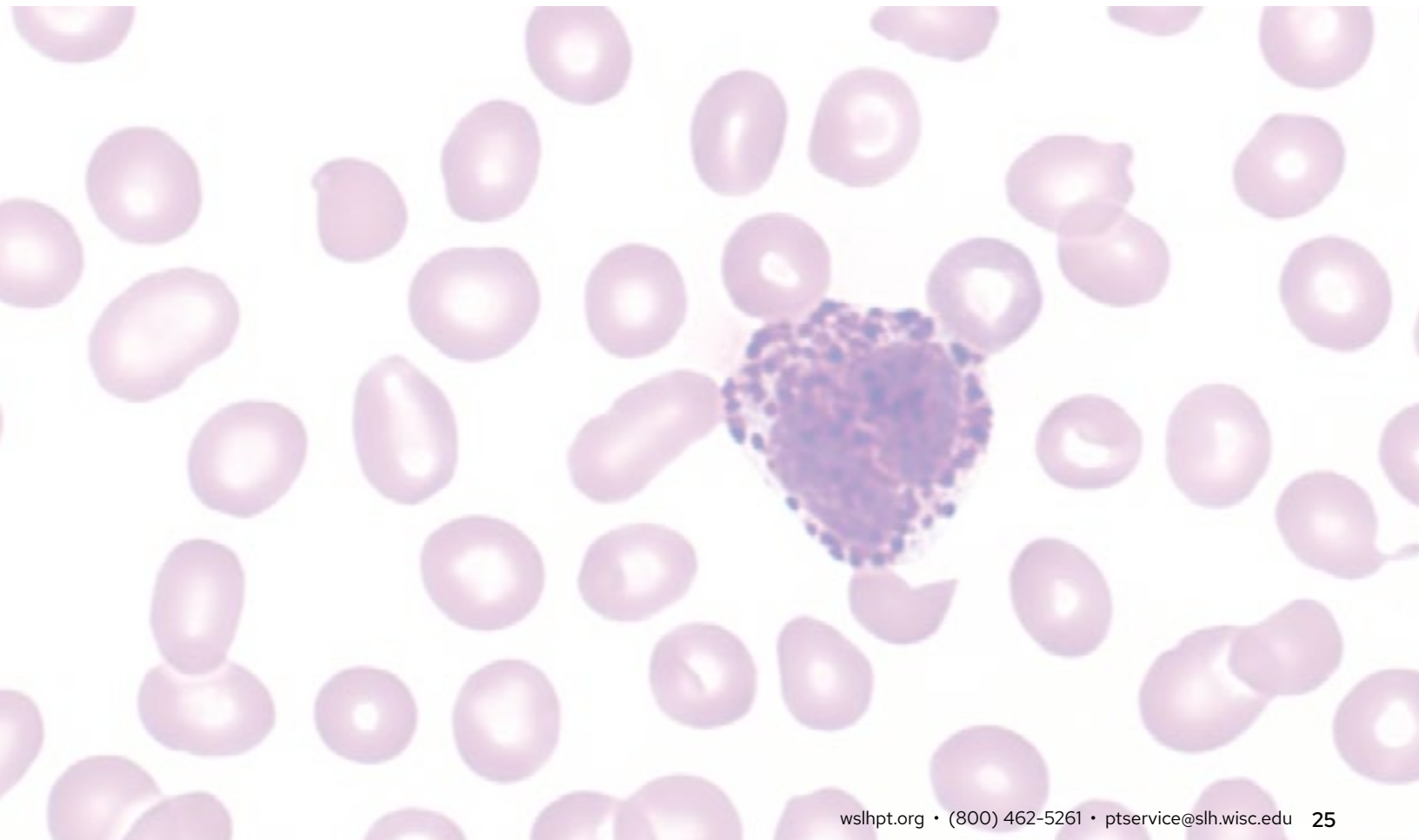
Hematocrit - Waived Methods (HW)

Item PT02150
QE Product Item PT02175

Liquid whole blood samples intended for use with waived hematocrit methods.

CLIA REGULATED	UNREGULATED
ANALYTES	<ul style="list-style-type: none">• Hematocrit

2025 Ship Dates	March 31	October 13	Two shipments per year Three samples per shipment
------------------------	----------	------------	--



HEMATOLOGY

Hemoglobin - Waived Methods (HWG)

1mL liquid samples intended for use with waived hemoglobin systems. Compatible with HemoCue Hb 201, HemoPoint H2, and other waived hemoglobin systems. Samples are NOT compatible with HemoCue Hb 301 and HemoCue Hb 801. See HWH product below.

Item PT01450
QE Product Item PT01475
May be added on to POC Package.
See page 54.

ANALYTES	CLIA REGULATED	UNREGULATED
		• Hemoglobin

2025 Ship Dates March 31 October 13 Two shipments per year
Three samples per shipment

Hemoglobin - HemoCue Hb 301 and Hb 801 - Waived (HWH)

1mL liquid samples intended for use with HemoCue Hb 301 and HemoCue Hb 801.

Item PT01455
QE Product Item PT01465
May be added on to POC Package.
See page 54.
* Analyte(s) not yet accepted by the
CAP Laboratory Accreditation Program

ANALYTES	CLIA REGULATED	UNREGULATED
		• Hemoglobin *

2025 Ship Dates March 31 October 13 Two shipments per year
Three samples per shipment

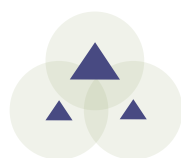
Sickle Cell Screen (SK)

Stabilized RBC samples compatible with solubility and electrophoresis methods.

Item PT02490
QE Product Item PT02515

ANALYTES	CLIA REGULATED	UNREGULATED
		• Sickle cell screen

2025 Ship Dates March 31 October 13 Two shipments per year
Three samples per shipment



IMMUNOHEMATOLOGY

▲ Blood Bank

Blood Bank - Comprehensive (AB)

Five bar-coded 4mL whole blood samples and one 2mL whole blood donor sample for compatibility testing. Intended for use with manual and automated methods.

Item PT04120
QE Product Item PT04130

NOTE: Samples are NOT compatible with Olympus PK7200/7300 instruments.

	CLIA REGULATED	UNREGULATED
ANALYTES	<ul style="list-style-type: none"> • ABO group • Rh (D) typing • Unexpected antibody detection 	<ul style="list-style-type: none"> • Compatibility testing • Antibody identification

2025 Ship Dates	February 24	June 16	October 6	Three shipments per year Five samples per shipment
------------------------	-------------	---------	-----------	---

Blood Bank - Limited (AB)

Five bar-coded 4mL whole blood samples. Intended for use with manual and automated methods.

Item PT04140
QE Product Item PT04150

NOTE: Samples are NOT compatible with Olympus PK7200/7300 instruments.

	CLIA REGULATED	UNREGULATED
ANALYTES	<ul style="list-style-type: none"> • ABO group 	<ul style="list-style-type: none"> • Rh (D) typing

2025 Ship Dates	February 24	June 16	October 6	Three shipments per year Five samples per shipment
------------------------	-------------	---------	-----------	---

Direct Antiglobulin Test (DAT)

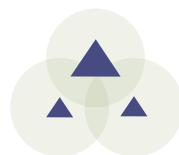
Three bar-coded 2mL whole blood samples for Direct Antiglobulin Testing. Intended for use with manual and automated methods.

Item PT04145

NOTE: Samples are NOT compatible with Olympus PK7200/7300 instruments.

	CLIA REGULATED	UNREGULATED
ANALYTES		<ul style="list-style-type: none"> • DAT (Poly IgG and Complement)

2025 Ship Dates	February 24	October 6	Two shipments per year Three samples per shipment
------------------------	-------------	-----------	--



IMMUNOLOGY

CRP Immunoserology (XP)

1mL liquid samples intended for methods screening for non-specific inflammatory disease.

	CLIA REGULATED	UNREGULATED
ANALYTES		<ul style="list-style-type: none"> • C-reactive protein, qualitative * • C-reactive protein, quantitative

2025 Ship Dates January 21 September 2 Two shipments per year
Three samples per shipment

Item PT04160
QE Product Item PT04185

NOTE: High-sensitivity CRP is now CLIA regulated. Laboratories reporting high-sensitivity CRP methods, see IE product on page 12.

* Analyte(s) not yet accepted by the CAP Laboratory Accreditation Program

Helicobacter pylori Serology (HL)

0.5mL liquid samples.

	CLIA REGULATED	UNREGULATED
ANALYTES		<ul style="list-style-type: none"> • Helicobacter pylori, total antibody

2025 Ship Dates January 21 September 2 Two shipments per year
Three samples per shipment

Item PT04010

NOTE: For stool Helicobacter pylori, see HPSA product on page 41. For Urease, see RUR product on page 41.

Hepatitis (YB)

1.5mL liquid samples. Compatible with traditional hepatitis methods and OraQuick HCV Rapid Antibody Test.

	CLIA REGULATED	UNREGULATED
ANALYTES	<ul style="list-style-type: none"> • Anti-HBc, IgM • Anti-HBc, total antibody 	<ul style="list-style-type: none"> • Anti-HBs • Anti-HCV • HBsAg

2025 Ship Dates January 21 May 12 September 2 Three shipments per year
Five samples per shipment

Item PT04190
Add-on to HV Item PT04195

Hepatitis C - Waived Methods (YBC)

1mL liquid serum samples. Compatible with waived methods including OraQuick HCV Rapid Antibody Test.

	CLIA REGULATED	UNREGULATED
ANALYTES		<ul style="list-style-type: none"> • Anti-HCV

2025 Ship Dates January 21 September 2 Two shipments per year
Three samples per shipment

Item PT04192
QE Product Item PT04193

HIV (HV)

Item PT04020
QE Product Item PT04030

1mL liquid samples. Compatible with rapid and traditional testing methods used to test for Anti-HIV-1, Anti-HIV-1/2, or HIV-1 p24 Antigen.

	CLIA REGULATED	UNREGULATED
ANALYTES	<ul style="list-style-type: none"> • Anti-HIV • Anti-HIV/p24 Antigen (not differentiated) 	<ul style="list-style-type: none"> • p24 Antigen

2025 Ship Dates January 21 May 12 September 2 Three shipments per year
Five samples per shipment

HIV - Waived Methods (HVW)

Item PT04040
QE Product Item PT04062

1mL liquid samples. Compatible with waived rapid kits used to test for Anti-HIV-1, Anti-HIV-1/2, or HIV-1 p24 Antigen.

	CLIA REGULATED	UNREGULATED
ANALYTES		<ul style="list-style-type: none"> • Anti-HIV • p24 Antigen

2025 Ship Dates January 21 September 2 Two shipments per year
Three samples per shipment

Infectious Disease Serology (MMV)

Item PT04320

0.5mL lyophilized serum samples.

	CLIA REGULATED	UNREGULATED
ANALYTES		<ul style="list-style-type: none"> • Measles IgG, qualitative* • Measles IgM, qualitative • Mumps IgG, qualitative • Mumps IgM, qualitative • Varicella Zoster IgG, qualitative* • Varicella Zoster IgM, qualitative

2025 Ship Dates January 21 September 2 Two shipments per year
Three samples per shipment

* Analyte(s) not yet accepted by the CAP Laboratory Accreditation Program

IMMUNOLOGY

Lyme Disease Serology (LY)

Item PT04200

0.5mL liquid samples.

ANALYTES	CLIA REGULATED		UNREGULATED
			<ul style="list-style-type: none"> • Lyme Disease Antibody, IgG • Lyme Disease Antibody, IgM • Lyme Disease Antibody, Total
2025 Ship Dates	January 21	September 2	Two shipments per year Three samples per shipment

Mono Immunoserology (ZM)

Item PT04210

0.65mL liquid samples.

ANALYTES	CLIA REGULATED		UNREGULATED
		• Infectious mononucleosis	
2025 Ship Dates	January 21	May 12	September 2
			Three shipments per year Five samples per shipment

Mono Immunoserology - Waived Methods (MW)

Item PT04220

QE Product Item PT04245

0.65mL liquid samples.

May be added on to POC Package.
See page 54.

ANALYTES	CLIA REGULATED		UNREGULATED
2025 Ship Dates	January 21	September 2	Two shipments per year Three samples per shipment

Mycoplasma Antibody (MP)

Item PT04300

0.5mL liquid samples. Compatible with kits that detect antibody to Mycoplasma pneumoniae.

ANALYTES	CLIA REGULATED		UNREGULATED
2025 Ship Dates	January 21	September 2	Two shipments per year Three samples per shipment

Rheumatoid Factor Immunoserology (ZR)

Item PT04250
Add-on to ZM Product Item PT04255

1mL liquid samples.

ANALYTES	CLIA REGULATED	UNREGULATED
		<ul style="list-style-type: none"> Rheumatoid factor, qualitative

2025 Ship Dates	January 21	May 12	September 2	Three shipments per year Five samples per shipment
------------------------	------------	--------	-------------	---

Rubella Immunoserology (XU)

Item PT04260

1mL liquid samples.

ANALYTES	CLIA REGULATED	UNREGULATED
		<ul style="list-style-type: none"> Rubella, qualitative (IgG)

2025 Ship Dates	January 21	May 12	September 2	Three shipments per year Five samples per shipment
------------------------	------------	--------	-------------	---

Rubella IgM Immunoserology (XM)

Item PT04330

0.5mL lyophilized serum samples. For Quality Assurance only; does not meet CMS Rubella requirements.

ANALYTES	CLIA REGULATED	UNREGULATED

2025 Ship Dates	January 21	September 2	Two shipments per year Three samples per shipment
------------------------	------------	-------------	--

IMMUNOLOGY

Syphilis Serology (SS)

Item PT04270
QE Product Item PT04280

1mL liquid samples intended for the quantitative and qualitative evaluation of antibody to *Treponema pallidum*. Intended for methods that evaluate serum specimens (RPR, VDRL, FTA, MHA-TP, TP-PA, EIA/ CIA, multiplex flow immunoassay, and rapid kits).

	CLIA REGULATED	UNREGULATED
ANALYTES	<ul style="list-style-type: none"> • Syphilis Nontreponemal, qualitative • Syphilis Nontreponemal, quantitative • Syphilis Treponemal, qualitative 	
2025 Ship Dates	January 21 May 12	September 2
		Three shipments per year Five samples per shipment

Syphilis Serology -Waived Methods (SSW)

Item PT04272
QE Product Item PT04273

1mL liquid serum samples intended for use with Syphilis Health Check (waived).

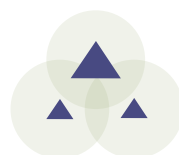
	CLIA REGULATED	UNREGULATED
ANALYTES		<ul style="list-style-type: none"> • Syphilis Treponemal, qualitative
2025 Ship Dates	January 21 September 2	
		Two shipments per year Three samples per shipment

Thyroid Antibodies (THY)

Item PT04310

0.5mL liquid samples.

	CLIA REGULATED	UNREGULATED
ANALYTES		<ul style="list-style-type: none"> • Thyroglobulin Antibody (Anti-TG), quantitative • Thyroid Peroxidase/Microsomal Antibody (Anti-TPO), quantitative
2025 Ship Dates	January 21 September 2	
		Two shipments per year Three samples per shipment



MICROBIOLOGY

Microbiology CLIA requirements:

CLIA regulations require five proficiency testing challenges per event for each Microbiology sub-specialty. The sub-specialties are Bacteriology, Mycobacteriology, Mycology, Parasitology and Virology. All non-waived tests in a sub-specialty can be combined to meet the five challenges per event requirement.

Microbiology challenges tested with waived methods cannot be included with non-waived methods to meet the five challenges per event requirement.

2025 Microbiology CLIA Changes: CLIA mandates laboratories performing regulated microbiology tests to conduct five regulated challenges per test event in each sub-specialty. Effective January 1, 2025, the following additions to each sub-specialty apply:

- Bacteriology: Gram stain morphology, Bacterial toxin detection, Direct bacterial antigen detection, Detection of the presence/absence of bacteria, Antimicrobial susceptibility require 2 samples per event
- Mycobacteriology: Detection of presence/absence of mycobacteria, without identification
- Mycology: Detection of presence/absence of fungi and aerobic actinomycetes without identification, Identification of fungi and aerobic actinomycetes
- Parasitology: Identification of parasites



MICROBIOLOGY

Multiplex Products:

We offer a variety of Multiplex products. Product descriptions and ordering information can be found on the pages listed to the right. Charts below and on the next page lists the organisms available in each product.

Note: Meningitis Multiplex and UTI Multiplex are Educational products.

Scores no longer sent to CMS. Labs must enroll in other regulated Bacteriology products to fulfill CLIA requirements.

Blood Pathogen Multiplex (BPM)	Page 38
GI Multiplex (EP)	Page 39
Meningitis Multiplex (MEP)	Page 42
Respiratory Multiplex (RP)	Page 48
UTI Multiplex (UTI)	Page 44

Bacterial Identification	CLIA REGULATED			EDUCATIONAL	
	BPM	EP	RP	MEP	UTI
Acinetobacter species	X				X
Actinotignum shaalii					X
Aerococcus urinae					X
Bacteroides fragilis	X				X
Bordetella pertussis			X		
C. difficile, toxigenic		X			
Campylobacter species		X			
Chlamydia pneumoniae			X		
Citrobacter species	X				X
Clostridium perfringens					X
Enterobacter species	X				X
Enterococcus species	X				X
Escherichia coli	X				X
Escherichia coli (EAEC, EPEC, ETEC, EIEC, STEC, O157)		X			
Escherichia coli K1				X	
Haemophilus influenzae	X			X	
Klebsiella species	X				X
Listeria species	X			X	
Morganella morganii					X
Mycoplasma species			X		X
Neisseria meningitidis	X			X	
Peptostreptococcus species					X
Plesiomonas shigelloides		X			
Prevotella bivia					X
Proteus species	X				X
Providencia stuartii					X
Pseudomonas aeruginosa	X				X
Salmonella species	X	X			
Serratia marcescens	X				X
Staphylococcus species	X				X
Stenotrophomonas maltophilia	X				
Streptococcus species	X			X	X
Ureaplasma urealyticum					X
Vibrio species		X			
Yersinia enterocolitica		X			

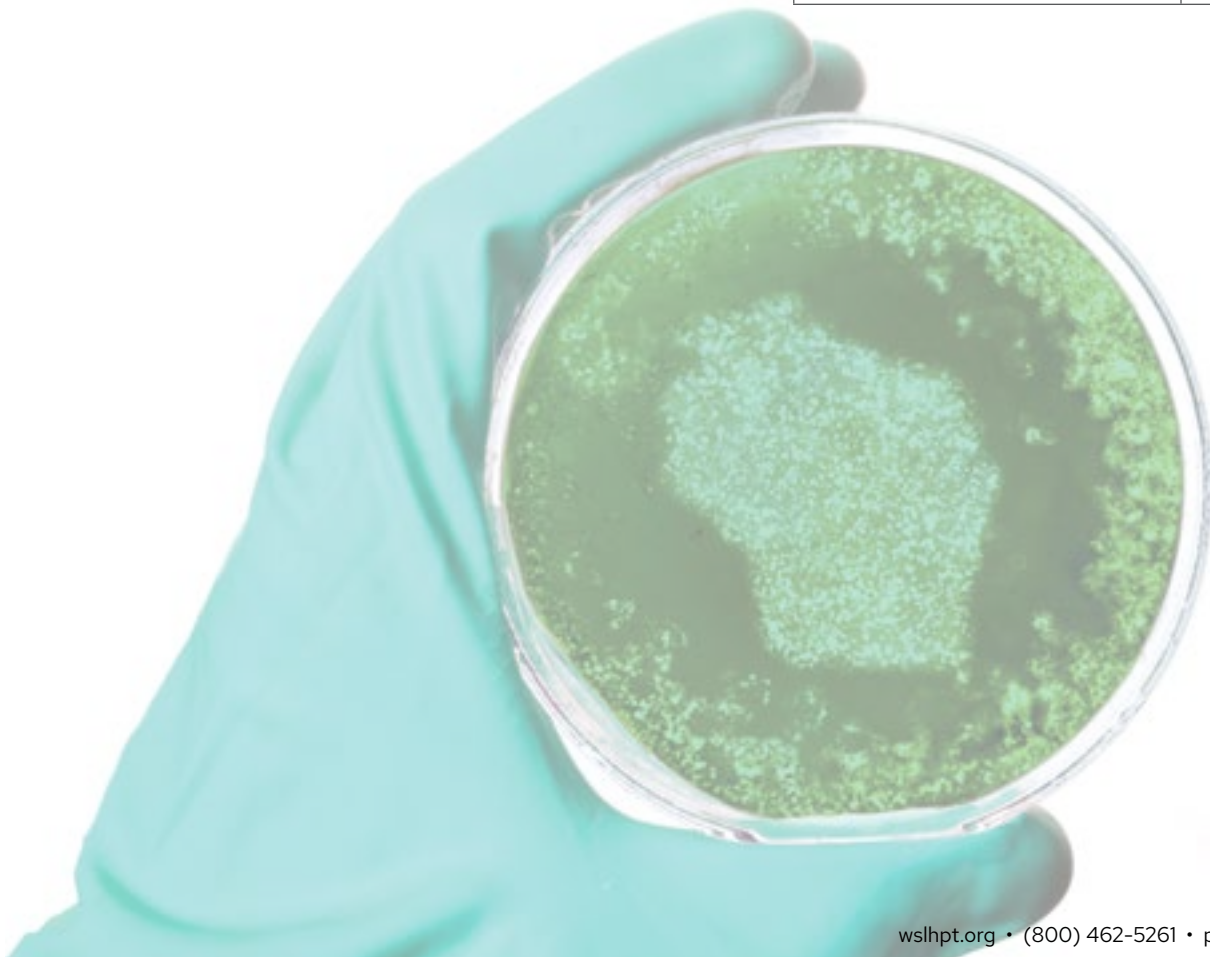
Fungal Identification	CLIA REGULATED			EDUCATIONAL	
	BPM	EP	RP	MEP	UTI
Candida species	X				X
Cryptococcus neoformans/gattii	X			X	
Epidermphyton floccosum					X
Trichophyton rubrum					X

Parasite Identification	CLIA REGULATED			EDUCATIONAL	
	BPM	EP	RP	MEP	UTI
Cryptosporidium		X			
Cyclospora cayetanensis		X			
Entamoeba histolytica		X			
Giardia lamblia		X			

MICROBIOLOGY

Viral Identification	CLIA REGULATED			EDUCATIONAL	
	BPM	EP	RP	MEP	UTI
Adenovirus			X		
Adenovirus F 40/41		X			
Astrovirus		X			
Coronavirus			X		
Cytomegalovirus (CMV)				X	
Enterovirus				X	
Herpes simplex virus 1 (HSV-1)				X	
Herpes simplex virus 2 (HSV-2)				X	
Human herpesvirus 6 (HHV-6)				X	
Human metapneumovirus			X		
Human parechovirus				X	
Influenza (A/B)			X		
Norovirus GI/GII		X			
Parainfluenza			X		
Respiratory syncytial virus (RSV)			X		
Rhinovirus/Enterovirus			X		
Rotavirus A		X			
Sapovirus		X			
SARS-CoV-2			X		
Varicella zoster virus (VZV)				X	

Resistance Gene	UNREGULATED			EDUCATIONAL	
	BPM	EP	RP	MEP	UTI
aac(6)-Ib-cr					X
ampC					X
CTX-M	X				X
dfrA					X
DHFR					X
ErmA,B,C					X
femA					x
IMP	X				X
KPC	X				X
mcr-1	X				X
mecA/C and MREJ (MRSA)	X				X
mefA					X
NDM	X				X
OXA	X				X
qnrA, qnrB, qnrS					X
SHV					X
sul1/sul2					X
TEM					X
tetB/tetM					X
van A/B	X				X
vanM					X
VIM	X				X



MICROBIOLOGY

▲ Bacteriology

Bacteriology - Comprehensive (MC)

Item PT05030

Procedures listed are offered a minimum of two times per year. All samples compatible with culture or molecular methods unless noted.

NOTE: Group A Strep antigen samples are not compatible with molecular methods.

Antimicrobial susceptibility - Each event will include 1 urine and 1 culture of alternating source (sources may include wound, blood, respiratory).

See ST product or WS product on page 40.

	CLIA REGULATED	UNREGULATED
PROCEDURES (NUMBER/YEAR)	<ul style="list-style-type: none"> • Anaerobic bacteria culture (2) • Antimicrobial susceptibility (6) • Blood culture (2) • C. difficile antigen, toxin and/or molecular (2) • Enteric pathogen identification (2) • Gram stain reaction/morphology (5) • Group A Strep antigen detection (3) • Group A Strep culture/molecular (3) • Group B Strep culture/molecular (2) • Methicillin-resistant Staph aureus (2) • Miscellaneous culture (1) • N. gonorrhoeae culture (3) • Urine culture (3) • Vancomycin-resistant Enterococcus (2) 	<ul style="list-style-type: none"> • Colony count (urine culture) *

* Analyte(s) not yet accepted by the CAP Laboratory Accreditation Program

2025 Ship Dates	February 10	June 9	September 22	Three shipments per year Nine samples per shipment
------------------------	-------------	--------	--------------	---

Bacteriology - Limited (MC)

Item PT05040

All samples compatible with culture or molecular methods unless noted.

NOTE: Group A Strep antigen samples are not compatible with molecular methods.

Antimicrobial susceptibility - Each event will include 1 urine and 1 culture of alternating source (sources may include wound, blood, respiratory).

See ST product or WS product on page 40.

	CLIA REGULATED	UNREGULATED
PROCEDURES (NUMBER/YEAR)	<ul style="list-style-type: none"> • Anaerobic bacteria culture (1) • Antimicrobial susceptibility (6) • Blood culture (1) • Gram stain reaction/morphology (4) • Group A Strep antigen detection (3) • Group A Strep culture/molecular (3) • Miscellaneous culture (1) • N. gonorrhoeae culture (3) • Urine culture (3) • Wound culture (1) 	<ul style="list-style-type: none"> • Colony count (urine culture) *

* Analyte(s) not yet accepted by the CAP Laboratory Accreditation Program

2025 Ship Dates	February 10	June 9	September 22	Three shipments per year Five samples per shipment
------------------------	-------------	--------	--------------	---

MICRO-BACTERIOLOGY

Bacterial Antigen (BA)

Item PT05000

Samples for rapid antigen detection. Compatible with BinaxNOW Streptococcus pneumoniae antigen card (Urine/CSF).

PROCEDURES	CLIA REGULATED		UNREGULATED	2025 Ship Dates	February 10	June 9	September 22	Three shipments per year Five samples per shipment
	• Streptococcus pneumoniae							

Bacterial Vaginosis Detection - Waived Methods (BV)

Item PT05005

Samples for the detection of bacterial vaginosis intended for use with the OSOM BVBLUE Test kit.

PROCEDURES	CLIA REGULATED		UNREGULATED	2025 Ship Dates	February 10	September 22	Two shipments per year Three samples per shipment
			• Bacterial vaginosis detection				

Bioterrorism Preparedness Exercise (BPE)

Item PT06010

This is an educational exercise intended to document QA/competency for biological emergency response situations. It provides surrogate organisms with characteristics that mimic potentially lethal pathogens. Scores are not transmitted to accreditation agencies.

State coordinators can arrange to enroll and fund their response network (sentinel) laboratories. They will receive copies of all reports for use in assessment and documentation of capacity, readiness, and training needs.

2025 Ship Dates	March 10	October 6	Two shipments per year Two samples per shipment
-----------------	----------	-----------	--

Blood Culture (CB)

Item PT05360
QE Product Item PT05365

Samples for identification of aerobic and anaerobic organisms from blood culture.

For Blood Pathogen Multiplex see BPM product on page 38.

PROCEDURES	CLIA REGULATED		UNREGULATED	2025 Ship Dates	February 10	June 9	September 22	Three shipments per year Five samples per shipment
	• Blood culture • Gram stain reaction/morphology							

MICROBIOLOGY

▲ Bacteriology

Blood Pathogen Multiplex (BPM)

Blood pathogen multiplex panel for molecular platforms. For detection of bacterial (aerobic and anaerobic) pathogens, fungal pathogens and resistance genes present in simulated positive blood culture.

2 Sample Add-on Item PT05481

Targets available for reporting are listed on pages 34 and 35. Not all platforms will detect all targets listed.

	CLIA REGULATED	UNREGULATED
PROCEDURES	<ul style="list-style-type: none"> Bacterial identification Fungal identification 	<ul style="list-style-type: none"> Resistance genes (Appropriate for bacterial target selected)

2025 Ship Dates	February 10	June 9	September 22	Three shipments per year Two samples per shipment
------------------------	-------------	--------	--------------	--

Bordetella by Molecular Methods (BOR)

Item PT05054

Intended for detection of *B. pertussis*, *B. parapertussis*, and/or *B. holmesii* by molecular methods.

	CLIA REGULATED	UNREGULATED
PROCEDURES	<ul style="list-style-type: none"> Bordetella species detection 	

2025 Ship Dates	February 10	June 9	September 22	Three shipments per year Five samples per shipment
------------------------	-------------	--------	--------------	---

Carbapenem Resistance Detection (CR)

Item PT05330
QE Product Item PT05335

Samples for detection of Carbapenem-resistant organisms (CRO). Intended for molecular methods, including the Cepheid GeneXpert Carba-R.

	CLIA REGULATED	UNREGULATED
PROCEDURES		<ul style="list-style-type: none"> IMP detection KPC detection NDM-1 detection OXA-48 detection VIM detection

2025 Ship Dates	March 24	October 20	Two shipments per year Five samples per shipment
------------------------	----------	------------	---

C. difficile (CD)

Item PT05060
QE Product Item PT05065

Compatible with rapid antigen or toxin detection methods as well as molecular methods.

	CLIA REGULATED	UNREGULATED
PROCEDURES	<ul style="list-style-type: none"> C. difficile antigen detection C. difficile molecular detection C. difficile toxin detection 	

2025 Ship Dates	February 10	June 9	September 22	Three shipments per year Five samples per shipment
------------------------	-------------	--------	--------------	---

CT/GC/TV Detection (AC)

Item PT05070

Samples containing human DNA. Intended for molecular methods.

	CLIA REGULATED	UNREGULATED
PROCEDURES	<ul style="list-style-type: none"> • Chlamydia trachomatis detection • Neisseria gonorrhoeae detection • Trichomonas detection 	
2025 Ship Dates	February 10 June 9	September 22
		Three shipments per year Five samples per shipment

Enteric Pathogens (NP)

Item PT05080

Each organism is presented at least once per year. Compatible with culture, molecular methods and rapid Campylobacter identification methods.

NOTE: NOT compatible with Shiga Toxin testing methods – see SHG product on page 43.

	CLIA REGULATED	UNREGULATED
PROCEDURES	<ul style="list-style-type: none"> • Aeromonas • Campylobacter • E. coli O157:H7 • Plesiomonas 	<ul style="list-style-type: none"> • Salmonella • Shigella • Vibrio • Yersinia
2025 Ship Dates	February 10 June 9	September 22
		Three shipments per year Five samples per shipment

GI Multiplex (EP)

Item PT05380

Samples intended for gastrointestinal multiplex assays.

3 Sample Add-on Item PT05381

Targets available for reporting are listed on pages 34 and 35. Not all platforms will detect all targets listed.

	CLIA REGULATED	UNREGULATED
PROCEDURES	<ul style="list-style-type: none"> • Bacterial identification • Parasite identification • Viral identification 	
2025 Ship Dates	February 10 June 9	September 22
		Three shipments per year Five samples per shipment

MICROBIOLOGY

▲ Bacteriology

Gram Stain (GS)

Unfixed slides for Gram staining.

Item PT05090
QE Product Item PT05100

	CLIA REGULATED	UNREGULATED
PROCEDURES	• Gram stain reaction/morphology	
2025 Ship Dates	February 10 June 9	September 22
		Three shipments per year Five samples per shipment

Group A Strep Antigen (Rapid Strep) (SA)

Samples for Group A Streptococci antigen detection (rapid strep).

Item PT05110
QE Product Item PT05120
NOTE: Group A Strep antigen samples are not compatible with molecular methods. See ST product or WS product below.

	CLIA REGULATED	UNREGULATED
PROCEDURES	• Group A Strep antigen detection	
2025 Ship Dates	February 10 June 9	September 22
		Three shipments per year Five samples per shipment

Group A Strep - Waived Methods (WS)

Intended for waived antigen or waived molecular methods only.

Item PT05130
QE Product Item PT05155
Product available in POC Package -see page 54.

	CLIA REGULATED	UNREGULATED
PROCEDURES		• Group A Strep detection
2025 Ship Dates	March 31 October 13	
		Two shipments per year Three samples per shipment

Group A Strep (ST)

Samples for detection of Group A Streptococci. Compatible with culture and molecular methods.

Item PT05170

	CLIA REGULATED	UNREGULATED
PROCEDURES	• Group A Strep	
2025 Ship Dates	February 10 June 9	September 22
		Three shipments per year Five samples per shipment

Group B Strep / Neisseria gonorrhoeae (SB)

Item PT05180
QE Product Item PT05185

Samples for detection of Group B Streptococci by culture or molecular methods and/or N. gonorrhoeae by culture.

	CLIA REGULATED		UNREGULATED	
PROCEDURES	<ul style="list-style-type: none"> • Group B Strep • Neisseria gonorrhoeae 			
2025 Ship Dates	February 10	June 9	September 22	Three shipments per year Five samples per shipment

Helicobacter pylori Antigen, Stool (HPSA)

2 sample Add-on Item PT05401
QE Product Item PT05403

0.5mL liquid samples intended for the qualitative evaluation of Helicobacter pylori antigen in stool specimens.

NOTE: For non-waived methods, Item PT05401 only meets CLIA requirements if ordered with another regulated Bacteriology product.

For serum Helicobacter pylori, see HL product on page 28.

	CLIA REGULATED		UNREGULATED	
PROCEDURES	<ul style="list-style-type: none"> • Helicobacter pylori antigen detection 			
2025 Ship Dates	February 10	June 9	September 22	Three shipments per year Two samples per shipment

Helicobacter pylori - Rapid Urease (RUR)

Item PT05500

Simulated gastric biopsy samples on paper disks. Intended for use with CLOtest, PyloriTek, or similar methods.

NOTE: For serum Helicobacter pylori, see HL product on page 28.

* Analyte(s) not yet accepted by the CAP Laboratory Accreditation Program

	CLIA REGULATED		UNREGULATED	
ANALYTES			<ul style="list-style-type: none"> • Urease * 	
2025 Ship Dates	February 10	September 22		Two shipments per year Three samples per shipment

Legionella Antigen (LGA)

2 Sample Add-on Item PT05440
QE Product Item PT05441

Samples for Legionella Antigen detection methods in urine.

NOTE: Item PT05440 only meets CLIA requirements if ordered with another regulated Bacteriology product.

	CLIA REGULATED		UNREGULATED	
ANALYTES	<ul style="list-style-type: none"> • Legionella antigen 			
2025 Ship Dates	February 10	June 9	September 22	Three shipments per year Two samples per shipment

MICROBIOLOGY

▲ Bacteriology

Meningitis Multiplex (MEP)

Samples intended for meningitis multiplex assays.

	EDUCATIONAL		
ANALYTES	<ul style="list-style-type: none">• Bacterial identification+• Fungal identification+• Viral identification+		
2025 Ship Dates	February 10	June 9	September 22
	Three shipments per year Two samples per shipment		

2 Sample Add-on Item PT05451

Targets available for reporting are listed on pages 34 and 35. Not all platforms will detect all targets listed.

+EDUCATIONAL: Scores no longer sent to CMS. Labs must enroll in other regulated Bacteriology products to fulfill CLIA requirements.

MRSA / VRE (MR)

Compatible with culture and molecular methods. NOT intended for methods that screen for specific VRE genes (vanA, vanB, etc.).

	CLIA REGULATED	UNREGULATED	
PROCEDURES	<ul style="list-style-type: none">• Staphylococcus aureus• Methicillin-resistant S. aureus• Vancomycin-resistant Enterococcus		
2025 Ship Dates	February 10	June 9	September 22
	Three shipments per year Five samples per shipment		

Item PT05200 QE Product Item PT05210

Mycoplasma genitalium Molecular (MG)

Samples for molecular detection of Mycoplasma genitalium.

	CLIA REGULATED	UNREGULATED	
PROCEDURES	<ul style="list-style-type: none">• M. genitalium detection		
2025 Ship Dates	February 10	June 9	September 22
	Three shipments per year Two samples per shipment		

2 Sample Add-on Item PT05461

NOTE: Item PT05461 only meets CLIA requirements if ordered with another regulated Bacteriology product.

MICRO-BACTERIOLOGY

Shiga Toxin (SHG)

Samples for Shiga toxin 1 and/or 2 and undifferentiated detection methods. Compatible with rapid antigen detection and molecular methods.

2 Sample Add-on Item PT05241
QE Product Item PT05242

NOTE: Item PT05241 only meets CLIA requirements if ordered with another regulated Bacteriology product.

	CLIA REGULATED	UNREGULATED
PROCEDURES	<ul style="list-style-type: none"> • Shiga toxin 1 detection • Shiga toxin 2 detection • Shiga toxin undifferentiated 	
2025 Ship Dates	February 10 June 9	September 22
		Three shipments per year Two samples per shipment

Throat/Urine Bacteriology (TU)

Samples for urine culture, Group A Streptococci culture/molecular, and Group A Streptococci antigen detection (rapid strep).

Item PT05250

NOTE: Group A Strep antigen samples are not compatible with molecular methods. See ST product or WS product on page 40.

	CLIA REGULATED	UNREGULATED
PROCEDURES (NUMBER/ SHIPMENT)	<ul style="list-style-type: none"> • Antimicrobial susceptibility (2) • Gram stain reaction/morphology (1) • Group A Strep antigen detection (2) • Group A Strep culture/molecular (2) • Urine culture (3) 	<ul style="list-style-type: none"> • Colony count (urine culture) *
2025 Ship Dates	February 10 June 9	September 22
		Three shipments per year Seven samples per shipment

* Analyte(s) not yet accepted by the CAP Laboratory Accreditation Program

Throat/Urine Bacteriology - Limited (TU)

Samples for urine culture and Group A Streptococci culture/molecular.

Item PT05260

	CLIA REGULATED	UNREGULATED
PROCEDURES (NUMBER/ SHIPMENT)	<ul style="list-style-type: none"> • Antimicrobial susceptibility (2) • Gram stain reaction/morphology (1) • Group A Strep culture/molecular (2) • Urine culture (3) 	<ul style="list-style-type: none"> • Colony count (urine culture) *
2025 Ship Dates	February 10 June 9	September 22
		Three shipments per year Five samples per shipment

* Analyte(s) not yet accepted by the CAP Laboratory Accreditation Program

MICROBIOLOGY

▲ Bacteriology

Urine Culture (UC)

Item PT05270

Samples for urine culture.

	CLIA REGULATED		UNREGULATED	
PROCEDURES (NUMBER/ SHIPMENT)	<ul style="list-style-type: none"> • Antimicrobial susceptibility (2) • Gram stain reaction/morphology (1) • Urine culture (5) 		<ul style="list-style-type: none"> • Colony count (urine culture) * 	
2025 Ship Dates	February 10	June 9	September 22	Three shipments per year Five samples per shipment

* Analyte(s) not yet accepted by the CAP Laboratory Accreditation Program

UTI Multiplex (UTI)

2 Sample Add-on Item PT05511

UTI multiplex panel for molecular platforms. For detection of bacterial pathogens, fungal pathogens and resistance genes present in urine.

Targets available for reporting are listed on pages 34 and 35. Not all platforms will detect all targets listed.

	EDUCATIONAL			
PROCEDURES	<ul style="list-style-type: none"> • Bacterial identification+ • Fungal identification+ 		<ul style="list-style-type: none"> • Resistance genes (Appropriate for bacterial target selected)+ 	
2025 Ship Dates	February 10	June 9	September 22	Three shipments per year Two samples per shipment

+EDUCATIONAL: Scores no longer sent to CMS. Labs must enroll in other regulated Bacteriology products to fulfill CLIA requirements.

Vaginal Pathogens (VP)

Item PT05280
QE Product Item PT05290

Intended for use with the BD Affirm VP111.

	CLIA REGULATED		UNREGULATED	
PROCEDURES	<ul style="list-style-type: none"> • Candida detection • Gardnerella detection • Trichomonas detection 			
2025 Ship Dates	February 10	June 9	September 22	Three shipments per year Five samples per shipment

VP Molecular (VPM)

Item PT05470

Samples for detection of vaginal pathogens via molecular methods. Compatible with most molecular platforms including BD MAX and Cepheid GeneXpert Xpress Vaginal Panels.

	CLIA REGULATED		UNREGULATED	
PROCEDURES	<ul style="list-style-type: none"> • Candida detection • Trichomonas detection 		<ul style="list-style-type: none"> • Bacterial vaginosis detection 	
2025 Ship Dates	February 10	June 9	September 22	Three shipments per year Five samples per shipment

MICROBIOLOGY

▲ Mycobacteriology

Acid-Fast Stain (MA)

Intended for reporting the presence or absence of acid-fast bacilli.

Item PT06000
Add-on to MB (below) Item PT06005

	CLIA REGULATED	UNREGULATED
PROCEDURES	• Acid-fast stain	
2025 Ship Dates	March 10 September 15	Two shipments per year Five samples per shipment

Mycobacteriology Culture (MB)

Samples for Mycobacterium species culture.

Item PT06060

	CLIA REGULATED	UNREGULATED
PROCEDURES	• Mycobacteria culture	
2025 Ship Dates	January 27 August 4	Two shipments per year Five samples per shipment

M. tuberculosis by Molecular Methods (TB)

Intended for Mycobacterium tuberculosis detection by molecular methods. Includes detection of Rifampin resistance.

Item PT06050
QE Product Item PT06055

	CLIA REGULATED	UNREGULATED
PROCEDURES	• M. tuberculosis detection	• Rifampin resistance screen
2025 Ship Dates	March 10 September 15	Two shipments per year Five samples per shipment



MICROBIOLOGY

▲ Mycology

KOH Slides (KOH)

Item PT06230

Slides for KOH/calcofluor white preparations. Samples for detection of yeast and fungal elements on skin.

	CLIA REGULATED	UNREGULATED
PROCEDURES		• KOH Preparation
2025 Ship Dates	February 10	September 22
	Two shipments per year Three samples per shipment	

Mycology - Comprehensive (MY)

Item PT06070

Samples for comprehensive fungal identification including yeast, dermatophytes, and aerobic actinomycete identification.

	CLIA REGULATED	UNREGULATED
PROCEDURES	• Aerobic Actinomycetes identification • Mold, yeast, and yeast-like organism identification	
2025 Ship Dates	January 6	May 5
	August 18	Three shipments per year Five samples per shipment

Mycology - Dermatophyte (DM)

Item PT06090

Two reporting options: 1) Qualitative - Designed for laboratories or dermatology offices reporting the presence or absence of dermatophytes. 2) Identification - Designed for laboratories or dermatology offices identifying dermatophytes to a genus or species level. Compatible with Dermatophyte Test Medium [DTM] or non-specialized and non-differential mycology media.

	CLIA REGULATED	UNREGULATED
PROCEDURES	• Dermatophyte identification to genus or species level (Identification) • Dermatophyte screen (Qualitative)	
2025 Ship Dates	January 6	May 5
	August 18	Three shipments per year Five samples per shipment

Mycology - Yeast (YE)

Item PT06100

Samples for yeast identification. Not intended for wet mount preparations.

	CLIA REGULATED	UNREGULATED
PROCEDURES	• Yeast and yeast-like organism identification	
2025 Ship Dates	January 6	May 5
	August 18	Three shipments per year Five samples per shipment

Blood Parasites (PAB)

Item PT06020

Samples include slides with giemsa-stained thick and thin blood smears and/or photomicrographs.

	CLIA REGULATED		UNREGULATED	
PROCEDURES	• Blood parasite identification			
2025 Ship Dates	February 10	June 9	September 22	Three shipments per year Five samples per shipment

Giardia/Cryptosporidium Antigen Detection (GI)

Item PT06030

Intended for laboratories performing Giardia/Cryptosporidium screening on stool samples.

	CLIA REGULATED		UNREGULATED	
PROCEDURES	• Giardia/Cryptosporidium antigen detection			
2025 Ship Dates	February 10	June 9	September 22	Three shipments per year Five samples per shipment

Parasitology - Comprehensive (PA)

Item PT06110

Sample types include: formalin-preserved stool suspension for wet mount and/or modified acid-fast stain, stool suspension for Giardia/ Cryptosporidium antigen detection, zinc-PVA stool smears, blood parasite smears/photomicrographs.

	CLIA REGULATED		UNREGULATED	
PROCEDURES	<ul style="list-style-type: none"> • Blood parasite identification • Giardia/Cryptosporidium antigen detection • Stool parasite identification 			
2025 Ship Dates	February 10	June 9	September 22	Three shipments per year Six samples per shipment

Trichomonas - Waived Methods (TV)

Item PT05310
QE Product Item PT05315

Samples for detection of Trichomonas intended for use with OSOM Trichomonas Rapid Test.

	CLIA REGULATED		UNREGULATED	
PROCEDURES			• Trichomonas detection	
2025 Ship Dates	February 10	September 22	Two shipments per year Three samples per shipment	

MICROBIOLOGY

▲ Virology

HSV Molecular (HSV)

Item PT06220

1mL liquid samples intended for molecular detection of Herpes simplex virus (HSV) 1 & 2.

	CLIA REGULATED	UNREGULATED
ANALYTES	• HSV 1 • HSV 2	
2025 Ship Dates	February 10 June 9	September 22
	Three shipments per year Five samples per shipment	

Rabies (RA)

Dual impressions on Teflon-coated slides.

DFA Method Item PT06130
QE Product DFA Method Item PT06137
dRIT Method Item PT06140
QE Product dRIT Method Item PT06147

	CLIA REGULATED	UNREGULATED
ANALYTES		• Rabies Antigen
2025 Ship Dates	April 14 October 6	
	Two shipments per year Five samples per shipment	

Respiratory Multiplex (RP)

Lyophilized samples intended for molecular respiratory multiplex assays.

Item PT06240
3 sample Add-on Item PT06241
QE Product Item PT06244

	CLIA REGULATED	UNREGULATED
ANALYTES	• Bacterial identification • Viral identification	
2025 Ship Dates	February 10 June 9	September 22
	Three shipments per year Five samples per shipment	

NOTE: For methods that detect SARS/Influenza or SARS/Influenza/RSV, see CM and CMW products on page 49.

Targets available for reporting are listed on pages 34 and 35. Not all platforms will detect all targets listed.

SARS-CoV-2 Antigen (CV)

Swabs intended for antigen tests targeting the SARS-CoV-2 nucleoprotein.

Item PT06288
QE Product Item PT06289

	CLIA REGULATED	UNREGULATED
ANALYTES	• SARS-CoV-2	
2025 Ship Dates	February 10 June 9	September 22
	Three shipments per year Five samples per shipment	

SARS-CoV-2 Antigen - Waived Methods (CVW)

Item PT06290
QE Product Item PT06295

Swabs intended for waived antigen tests targeting the SARS-CoV-2 nucleoprotein.

CLIA REGULATED		UNREGULATED	
ANALYTES			• SARS-CoV-2
2025 Ship Dates	February 10	September 22	Two shipments per year Three samples per shipment

SARS-CoV-2 Molecular Liquid (CLM)

Item PT06300
QE Product Item PT06305

1mL liquid samples for molecular detection of SARS-CoV-2 (whole genome). Intended for analyzer assays such as BD, Hologic, and Roche.

CLIA REGULATED		UNREGULATED	
ANALYTES	• SARS-CoV-2		
2025 Ship Dates	February 10	June 9	September 22
			Three shipments per year Five samples per shipment

SARS/Viral Molecular (CM)

Item PT06270
QE Product Item PT06275

Swabs with elution liquid intended for molecular detection of SARS-CoV-2 (whole genome), Influenza, and RSV. Can be used for multi-analyte SARS/Viral methods or single SARS methods.

NOTE: Contact WSLH PT for ordering instruction if additional swabs are needed for processing of separate test cartridges.

Hologic Aptima users order CLM product above.

CLIA REGULATED		UNREGULATED	
ANALYTES	• Influenza A • Influenza B	• RSV • SARS-CoV-2	
2025 Ship Dates	February 10	June 9	September 22
			Three shipments per year Five samples per shipment

SARS/Viral Molecular - Waived Methods (CMW)

Item PT06280
QE Product Item PT06285

Swabs with elution liquid intended for molecular detection of waived SARS-CoV-2 (whole genome), Influenza, and RSV methods. Can be used for waived multi-analyte SARS/Viral or single SARS methods.

NOTE: Contact WSLH PT for ordering instruction if additional swabs are needed for processing of separate test cartridges.

Hologic Aptima users order CLM product above.

CLIA REGULATED		UNREGULATED	
ANALYTES		• Influenza A • Influenza B	• RSV • SARS-CoV-2
2025 Ship Dates	February 10	September 22	Two shipments per year Three samples per shipment

MICROBIOLOGY

▲ Virology

Viral - Limited (VA)

1mL liquid samples for rapid antigen test kits or molecular methods.

Item PT06150
QE Product Item PT06160

ANALYTES	CLIA REGULATED		UNREGULATED	
		• Adenovirus • Influenza A	• Influenza B • RSV	
2025 Ship Dates	February 10	June 9	September 22	Three shipments per year Five samples per shipment

Viral with Rotavirus (VA)

1mL liquid samples for rapid antigen test kits or molecular methods.

Item PT06200
QE Product Item PT06210

NOTE: Customers not testing Rotavirus, choose Limited product above.

ANALYTES	CLIA REGULATED		UNREGULATED	
		• Adenovirus • Influenza A • Influenza B	• RSV • Rotavirus	
2025 Ship Dates	February 10	June 9	September 22	Three shipments per year Five samples per shipment

Viral - Waived Methods (VCW)

1mL liquid samples for waived rapid antigen test kits or molecular methods.

Item PT06170
QE Product Item PT06195

* Analyte(s) not yet accepted by the CAP Laboratory Accreditation Program

ANALYTES	CLIA REGULATED		UNREGULATED	
			• Adenovirus * • Influenza A	• Influenza B • RSV
2025 Ship Dates	February 10	September 22		Two shipments per year Three samples per shipment

MICRO-VIROLOGY



URINALYSIS/MICROSCOPY/MISC

Amniotic Fluid Detection (AE)

Item PT03000

1mL liquid samples for detecting the presence/absence of fluid from ruptured fetal membranes. Intended for use with the Actim PROM, AmniSure ROM, Clinical Innovations ROM Plus, and PartoSure.

NOTE: For Amniotic pH and pH ruptured interpretation, see PH product on page 11.

	CLIA REGULATED	UNREGULATED
ANALYTES		<ul style="list-style-type: none"> Rupture of fetal membranes
2025 Ship Dates	May 27 October 20	Two shipments per year Two samples per shipment

Body Fluid Cell Count (BFA & BFM)

Automated cell count (BFA) Item PT03030
Manual cell count (BFM) Item PT03040
QE Product BFA Item PT03037

Clear, protein-based, liquid samples intended for labs performing body fluid cell counts by automated or manual methods. These samples are NOT compatible with the IRIS IQ200.

	CLIA REGULATED	UNREGULATED
ANALYTES		<ul style="list-style-type: none"> RBC WBC (BFM) Total nucleated count/WBC (BFA)
2025 Ship Dates	March 31 October 13	Two shipments per year Three samples per shipment

Body Fluid Microscopy (BF)

Item PT03050

Three images (paper and online versions) that include crystal(s) and/or cell identification(s) found in miscellaneous fluids (e.g., synovial, spinal, pleural). A synovial fluid crystal identification will be provided in one of the three images per event.

	CLIA REGULATED	UNREGULATED
ANALYTES		<ul style="list-style-type: none"> Cell identification Crystal identification
2025 Ship Dates	March 31 October 13	Two shipments per year Three samples per shipment

Fecal Lactoferrin (LF)

Item PT03060

0.5mL liquid samples compatible with the LACTOFERRIN CHEK, LACTOFERRIN EZ VUE, and LEUKO EZ VUE methods.

	CLIA REGULATED	UNREGULATED
ANALYTES		<ul style="list-style-type: none"> Lactoferrin
2025 Ship Dates	March 31 October 13	Two shipments per year Three samples per shipment

URINALYSIS/MICROSCOPY/MISC

Fecal Occult Blood (OC)

Simulated fecal samples compatible with FOB (slide), iFOB, and automated systems.

Item PT03071
 QE Product Item PT03074
 Product available in POC Package -see page 54.

CLIA REGULATED		UNREGULATED
ANALYTES		<ul style="list-style-type: none"> • Occult blood, fecal
2025 Ship Dates	March 31 October 13	Two shipments per year Two samples per shipment

Fetal Fibronectin (FFN)

1mL liquid simulated cervicovaginal samples.

Item PT03100

CLIA REGULATED		UNREGULATED
ANALYTES		<ul style="list-style-type: none"> • Fetal fibronectin
2025 Ship Dates	May 27 October 20	Two shipments per year Three samples per shipment

Gastric Occult Blood (GO)

Liquid samples intended for Beckman Coulter Gastrocult slides and Aerscher HemaPrompt FG slides.

Item PT03110
 QE Product Item PT03135

CLIA REGULATED		UNREGULATED
ANALYTES		<ul style="list-style-type: none"> • Occult blood, gastric
2025 Ship Dates	March 31 October 13	Two shipments per year Three samples per shipment

Provider Performed Microscopy (PM)

Two images (paper and online versions) for each of the procedures listed below.

Item PT03170
 QE Product Item PT03195
 Product available in POC Package -see page 54.

CLIA REGULATED		UNREGULATED
ANALYTES		<ul style="list-style-type: none"> • Fecal smear for leukocytes • Fern test • KOH preparation, skin • KOH preparation, vaginal • Nasal smear for eosinophils • Pinworm preparation • Urine sediment • Vaginal wet preparation
2025 Ship Dates	March 31 October 13	Two shipments per year Two challenges per procedure

Note: Online PPM Competency is also available on page 59.

URINALYSIS/MICROSCOPY/MISC

Urinalysis / Urine hCG (UR)

Liquid samples for urinalysis and/or urine pregnancy.

	CLIA REGULATED	UNREGULATED
ANALYTES		<ul style="list-style-type: none"> • Bilirubin • Bilirubin - Tablet test • Glucose • hCG, urine – qualitative • Hemoglobin/Blood • Ketones
		<ul style="list-style-type: none"> • Ketones - Tablet test • Leukocyte esterase • Nitrites • pH • Protein • Specific gravity • Urobilinogen
2025 Ship Dates	March 31 October 13	Two shipments per year Three samples per shipment

Item PT03260
QE Product Item PT03285

Product available in POC Package -see page 54.

NOTE: For serum hCG see CET and HCG products on page 13.

Urine hCG - 5 Samples (UH)

Liquid samples for urine pregnancy.

	CLIA REGULATED	UNREGULATED
ANALYTES		<ul style="list-style-type: none"> • hCG, urine – qualitative
2025 Ship Dates	March 31 October 13	Two shipments per year Five samples per shipment

Item PT03290
QE Product Item PT03315

NOTE: For serum hCG see CET and HCG products on page 13.

Urine Sediment Identification (SU)

Two images (paper and online versions) for the identification of urine sediment components.

	CLIA REGULATED	UNREGULATED
ANALYTES		<ul style="list-style-type: none"> • Urine sediment
2025 Ship Dates	March 31 October 13	Two shipments per year Two challenges per shipment

Item PT03320
QE Product Item PT03345

URINALYSIS/MICROSCOPY/MISC

Create Your Own Point of Care Package

You can create your own point of care package by choosing combinations of a variety of items.

Point of Care Package

The Point of Care Package includes a choice of 2 to 4 items for one package price.

To create your package:

- Order Item PT03400 and choose up to 4 items from the POC Product list below.
- Fifth item may be added on for additional charge. (Order PT03401 with PT03400.)

Item PT03400

NOTE: If ordering only one item see individual product listings.

For complete product descriptions and individual product listings refer to pages listed below.

- OC - page 52
- WBG - page 14
- WS - page 40
- PM - page 52
- UR - page 53

POC PRODUCTS FOR ITEMS PT03400	POC ITEM #
• Fecal Occult Blood (OC) - 2 samples	PT03073
• Glucose Whole Blood (WBG) - 2 samples	PT01883
• Group A Strep - Waived Methods (WS) - 3 samples	PT05135
• Provider Performed Microscopy (PM) - 2 photos of each procedure	PT03175
• Urinalysis/Urine hCG (UR) - 3 samples	PT03265

Add-on Products to Point of Care Package

For more choices, the items listed below can be added on to the Point of Care Package.

ADD ON PRODUCTS TO PT03400	ADD-ON ITEM #
• Hemoglobin - Waived Methods (HWG) - 3 samples	PT01451
• Hemoglobin - HemoCue Hb 301 & Hb 801 - Waived (HWH) - 3 samples	PT01456
• Mono Immunoserology - Waived Methods (MW) - 3 samples	PT04222

For complete product descriptions refer to pages listed below.

- HWG - page 26
- HWH - page 26
- MW - page 30

Quality Evaluation (QE) Products

Need Quality Evaluation (QE) products? These products can be ordered in conjunction with any of the above corresponding Primary products and may be ordered in multiples.

QUALITY EVALUATION (QE) PRODUCTS	QE ITEM #
• Fecal Occult Blood (OC) - 2 samples	PT03074
• Glucose Whole Blood (WBG) - 3 samples	PT01895
• Group A Strep - Waived Methods (WS) - 3 samples	PT05155
• Hemoglobin - Waived Methods (HWG) - 3 samples	PT01475
• Hemoglobin - HemoCue Hb 301 & Hb 801 - Waived (HWH) - 3 samples	PT01465
• Provider Performed Microscopy (PM) - 2 photos of each procedure	PT03195
• Urinalysis/Urine hCG (UR) - 3 samples	PT03285

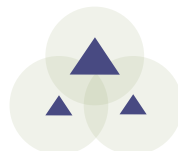
For complete product descriptions refer to pages listed below.

- OC - page 52
- WBG - page 14
- WS - page 40
- HWG - page 26
- HWH - page 26
- PM - page 52
- UR - page 53

2025 Ship Dates March 31

October 13

Two shipments per year
Two/Three challenges per shipment



Post-Vasectomy Semen Analysis (PV)

Item PT03140

1mL stabilized liquid sperm samples for post-vasectomy presence/absence screening and sperm count. Samples designed for manual methods.

ANALYTES	CLIA REGULATED	UNREGULATED
		• Sperm count, qualitative

2025 Ship Dates	May 27	October 20	Two shipments per year Two samples per shipment
------------------------	--------	------------	--

Post-Vasectomy with Motility (PVM)

Item PT03145

Web-base videos of two post-vasectomy semen samples for the presence/absence of sperm and presence/absence of motility.

NEW!

ANALYTES	CLIA REGULATED	UNREGULATED
		• Sperm count, qualitative * • Sperm motility, qualitative

* Analyte(s) not yet accepted by the CAP Laboratory Accreditation Program

2025 Ship Dates	May 27	October 20	Two shipments per year Two samples per shipment
------------------------	--------	------------	--

Sperm Count (SP)

Item PT03200

1mL stabilized liquid sperm samples. Samples designed for manual methods.

ANALYTES	CLIA REGULATED	UNREGULATED
		• Sperm count, quantitative

2025 Ship Dates	May 27	October 20	Two shipments per year Two samples per shipment
------------------------	--------	------------	--

ANDROLOGY

Sperm Morphology (SM & SMS)

Unstained slide (SM) Item PT03210
Pre-stained slide (SMS) Item PT03220

Slide and image for percent normal and morphology assessment. Pre-stained slide is stained with modified Papanicolaou.

	CLIA REGULATED	UNREGULATED
ANALYTES		• Sperm morphology

2025 Ship Dates	May 27	October 20	Two shipments per year One slide & image per shipment
------------------------	--------	------------	--

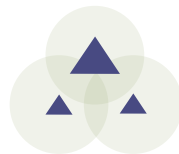
Sperm Motility (MOT)

Item PT03230

Web-based videos of two semen samples with multiple microscopic fields showing live and immobilized sperm.

	CLIA REGULATED	UNREGULATED
ANALYTES		• Sperm motility • Sperm progressive motility

2025 Ship Dates	May 27	October 20	Two shipments per year Two videos per shipment
------------------------	--------	------------	---



ONLINE TRAINING & COMPETENCY

WSLH PT brings you online training & competency in partnership with Medical Training Solutions (MTS) at the University of Washington



Clinical Laboratory

Track training and competency of staff involved in all phases of laboratory testing: specimen collection, transport, processing and analysis.



Point of Care

Administer and track competency tests for staff using microscopes, waived test kits, and instruments at the point of care.



Specimen Collection

Track and document training and competency assessment for specimen collection staff.

Provide your staff customizable online training & competency courses. Used by 1500 laboratories, these programs feature:

- Streamlined tracking and documentation
- High quality multimedia content developed with the University of Washington
- Over 50 hour of Continuing Education (CE) credit
- Create your own tests
- Upload and track your existing documents
- New questions in each Competency topic are published biannually
- Automated login - staff receive automated email with a link to login directly to their assignments menu
- Automated email notifications - one click sends reminders to staff
- Simple test interfaces - Easy-to-use multiple choice format
- Track progress in real-time and generate printable reports

[View a demo video](#) or [submit an order form](#) online at wslhpt.org.

ORDER OPTIONS

All order options include access for up to 30 individuals. Please consult the price list for additional fees for more than 30 users.

Order Options for Training Courses and Competency Tests

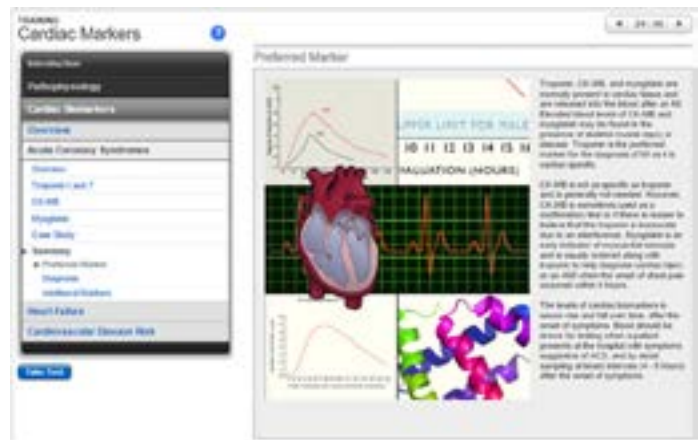
Items may be ordered separately or combined for savings. View complete order options for Training Courses and Competency Tests on the 2025 Price List.

Order Options for Microscopy Procedures (PPMP)

PPMP Training Courses and PPMP Competency Assessment may be ordered separately or combined for savings. View order options on the 2025 Price List.

Order Options for Waived Test Kits and POC Instruments (WPOC)

WPOC Competency Assessment may be ordered separately or as an add-on to any Training Course and/or Competency Test order. View order options on the 2025 Price List.



ONLINE TRAINING & COMPETENCY

TRAINING COURSES AND COMPETENCY TESTS

Initial enrollment includes 1-30 users. Additional fee applies for over 30 users; see price list.

Facility Fee (more than 30 users) **PT80910**

Training Courses and Competency Tests combined

All of both Training and Competency **PT80900**
Individual Training and Competency combined See below

Training Courses

All Training Courses **PT80000**
Individual Training Courses See below

Training courses are accredited for 1-3 hours of continuing education (CE) credit and can be used for initial training, cross training, remediation, and as a reference.

Utilization Management		Patient Complications	PT80510	Seminal Fluid	PT80180
Case Studies in Laboratory Stewardship	PT80540	Patient Identification	PT80360	Serous Fluid	PT80190
Managing Reference Labs	PT80550	Pediatric Phlebotomy	PT80340	Skin KOH	PT80490
Overview		Skin Puncture	PT80370	Synovial Fluid	PT80200
HIPAA 101	PT80560	Venipuncture	PT80380	Vaginal Wet Prep	PT80470
Introduction to Analytic QA	PT80150	Specimen Transport & Processing		Microbiology	
Introduction to the Clinical Laboratory	PT80060	Courier Transport	PT80410	Gram Stain	PT80030
Patient Safety	PT80090	Specimen Processing	PT80130	Mycology	PT80070
Safety		Specimen Transport	PT80400	Parasitology	PT80220
Biosafety	PT80120	Laboratory Skills		Blood Bank	
Chemical Safety	PT80260	Microscopy	PT80080	Introduction to Transfusion	PT80010
Chemical Waste	PT80460	Molecular Diagnostics		Transfusion Safety:	
Dry Ice and Liquid Nitrogen Safety	PT80500	Introduction to Molecular Diagnostics	PT80420	Ordering & Administering	PT80230
Ergonomic Safety	PT80290	Chemistry		Specimen Collection	PT80240
Ergonomic Safety	PT80310	Cardiac Markers	PT80160	Testing and Issuance	PT80250
Fire Safety	PT80300	Protein Electrophoresis	PT80110	Immunology	
Formaldehyde Safety	PT80330	Urinalysis	PT80140	ANCA	PT80450
HazCom Standard - GHS Update	PT80270	Hematology		Anti-nuclear Antibody	PT80430
UV Safety	PT80320	Peripheral Blood	PT80040	Crithidia	PT80530
Specimen Collection		Coagulation		Laboratory Methods	PT80050
Advanced Phlebotomy	PT80350	Coagulation	PT80170	Mouse Stomach Kidney	PT80440
Basic Phlebotomy	PT80100	Body Fluids			
Blood Culture	PT80390	Amniotic Fluid	PT80210		
Infection Control	PT80280	Cerebrospinal Fluid	PT80020		
		Fern Test	PT80480		

Competency Tests

All Competency Tests **PT81000**
Individual Competency Tests See below

Five or ten-question multiple choice competency assessment tests are published biannually on January 1st and July 1st in each category.

Pre-Analytic		Transfusion Safety:		Hepatitis & HIV Ab	PT81070
Chain of Custody	PT81190	Ordering & Administering	PT81210	Microbiology	PT81090
Customer Service	PT81170	Specimen Collection	PT81220	Mouse Stomach Kidney	PT81260
Patient Safety	PT81100	Analytic		Protein Electrophoresis	PT81120
Pediatric Phlebotomy	PT81180	ANCA	PT81270	Semen Analysis	PT81230
Phlebotomy	PT81110	Anti-nuclear Antibody	PT81080	Toxicology	PT81150
Safety	PT81130	Chemistry	PT81030	Transfusion Safety: Testing and Issuance	PT81240
Specimen Processing	PT81140	Coagulation	PT81040	Transfusion Service: Basic	PT81010
Specimen Transport	PT81200	CSF/Serous	PT81020	Transfusion Service: Intermediate	PT81250
		Gram Stain	PT81050	Urinalysis	PT81160
		Hematology	PT81060		

ONLINE TRAINING & COMPETENCY

POINT OF CARE

Microscopy Procedures (PPMP)

- Training Courses & Competency Assessment

PPMP Training Courses	PT80520
PPMP Competency Assessment	PT81900
PPMP Training and PPMP Competency together	PT81920
PPMP Competency Add-on to Training and/or Competency	PT81903

Includes:	PPMP Training	PPMP Competency
	<ul style="list-style-type: none"> • Basic Microscopy • Fern Test • Pinworm • Qualitative Semen 	<ul style="list-style-type: none"> • Skin KOH • Urine Sediment • Vaginal Wet Prep • Fecal WBC

Waived Test Kits & POC Instruments (WPOC)

- Competency Assessment

WPOC Competency Assessment	PT81910
WPOC Competency Add-on to Training and/or Competency	PT81913

Includes:	WPOC Competency Assessment	WPOC Competency Add-on to Training and/or Competency
<ul style="list-style-type: none"> • Aceava Mono Cassette • Aceava Strep A • Accu-Chek Inform II • Alere hCG Cassette • Amniotest • AmniSure • Assure COVID-19 IgG/IgM • AVOXimeter 1000E • BiliChek • BinaxNOW COVID-19 Ag Card • BinaxNOW Influenza A&B Card 2 	<ul style="list-style-type: none"> • BinaxNOW RSV • Cepheid Xpress SARS-Co-V-2 • Chemstrip 10 SG • Cholestech LDC • Clearview Mono • Clinitek - Clinitest hCG • Clinitek - Multistix 10 SG • CLOTtest • CoaguChek XS Plus PT/INR • ColoScreen • Consult Influenza A&B Cassette • DCA Vantage • Determine HIV Ag/Ab Combo 	<ul style="list-style-type: none"> • ESR • Gastrocult • HemaPrompt Fecal Occult Blood • HemaPrompt FG • Hemocult / Hemocult II • Hemocult Sensa • Hemochron Signature Elite • HemoCue Hb 201+ • ID Now COVID-19 • ID Now Influenza A&B • i-STAT - Operations • LeadCare II

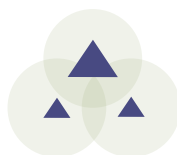
MTS LECTURE LIBRARY SUBSCRIPTION

PT81800

Subscription provides access to a monthly, live 1 hour webinar primarily focused on Laboratory Management topics. Subscribers may share the access with all employees in their organization. After participating in each webinar, users have the option to complete a test to earn 1.0 CE credits.

This subscription also provides the user access to the library of more than 60 archived lectures. Each lecture is archived and available on their MTS account approximately one month after the presentation date.

Upon completion of the archived lecture the user will be able to complete a 10 question test and then earn 1.0 CE credits.



ASSAYED SAMPLE SETS

Assayed Sample Set products provide high-quality samples which can be used for test validation, method correlation, calibration verification/linearity, employee training and/or competency, troubleshooting a PT failure, or other QA activities.

To order Assayed Sample Sets, [submit an order form](#) online at wslhpt.org.

Blood Lead (VSPB)

Item PT07030

Blood lead assayed sample sets include samples which cover the analytical range of most instruments with the target value and acceptable range for each sample. Orders include five samples in the following ranges: 2-5 ug/dL, 10-15 ug/dL, 20-25 ug/dL, 35-40 ug/dL, and 45-50 ug/dL. Sample ranges are subject to change due to sample availability.

Five samples per shipment

Blood Lead (VSBL)

Item PT07020

Blood lead assayed sample sets include samples which cover the analytical range of most instruments with the target value and acceptable range for each sample. Orders include three samples in the following ranges: 2-5 ug/dL, 20-25 ug/dL, and 45-50 ug/dL. Sample ranges are subject to change due to sample availability.

Three samples per shipment

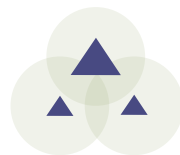
HIV (VSHV)

Item PT07010

Compatible with rapid and traditional testing methods along with automated combo assays used to detect HIV 1/2 antibody and p24 Antigen. Order includes 5 samples of either reactive or non-reactive targets.

Five liquid samples per shipment

For sample types other than HIV and Blood Lead, please call for pricing and availability OR [submit an order form](#) online at wslhpt.org.



ADDITIONAL PRODUCTS

Calibration Verification/Linearity Products

Provided in partnership with AUDIT MicroControls. Calibration Verification/Linearity products can assist laboratories in meeting CLIA calibration verification requirements.

Purchase includes access to AUDITOR™, a QC data reduction software tool to view group peer data, evaluate, and create reports. Shipping available in the US.

[View available products](#) and [submit an order form](#) online at wslhpt.org or contact customer service at (800) 462-5261.

Off-Schedule Proficiency Testing

WSLH PT can provide an off-schedule event in the case of PT failure (remedial) or for pre-licensure. Prior to ordering off-schedule events, contact your accrediting agency to confirm necessity of formal off-schedule PT and determine timeliness of need (immediate versus this quarter, 2-day versus priority overnight delivery), as these affect pricing.

**Please call for pricing and availability:
(800) 462-5261 or complete a quote
request form online at wslhpt.org.**

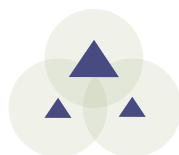
**Supplies may be limited in quantity
and shelf-life.**

Binders

WSLH PT offers 3-ring binders to organize your proficiency testing records, which must be retained for two years, unless longer retention is required. Binders contain dividers, preprinted labels, and blank labels.

PT07000

Please indicate the number of binders desired on your order form.



SHIPPING SCHEDULE

Blood Gas			Blood Gas 1		Blood Gas 2		Blood Gas 3	
			Ships - 03/03/25		Ships - 06/23/25		Ships - 10/27/25	
Product Name	Item #	QE Item #	Due	QE Due	Due	QE Due	Due	QE Due
Blood Gases / Electrolytes / Metabolites (BG)	PT01050	PT01060	03/21/25	03/28/25	07/11/25	07/18/25	11/14/25	11/21/25
Blood Gas Hemoglobin / Hematocrit add-on (BGH)	PT01570	PT01580	03/21/25	03/28/25	07/11/25	07/18/25	11/14/25	11/21/25
CO-Oximetry (CO)	PT01330	PT01340	03/21/25	03/28/25	07/11/25	07/18/25	11/14/25	11/21/25
i-STAT Chemistries - Waived Methods (BGW)	PT01400	PT01425	03/21/25	03/28/25	07/11/25	07/18/25		
i-STAT Chemistries Plus (BGB)	PT01345	PT01347	03/21/25	03/28/25	07/11/25	07/18/25	11/14/25	11/21/25

Chem/Endo/Tx			Chem/Endo/Tx 1		Chem/Endo/Tx 2		Chem/Endo/Tx 3	
			Ships - 03/17/25		Ships - 06/30/25		Ships - 09/29/25	
Product Name	Item #	QE Item #	Due	QE Due	Due	QE Due	Due	QE Due
Alcohol/Ketones, serum (AM)	PT01000	PT01010	04/04/25	04/11/25	07/18/25	07/25/25	10/17/25	10/24/25
Bilirubin - Elevated (NB)	PT01430	PT01440	04/04/25	04/11/25	07/18/25	07/25/25	10/17/25	10/24/25
Blood Lead-3 Samples (BL)	PT01070	PT01077	04/04/25	04/11/25			10/17/25	10/24/25
Blood Lead-5 Samples (PB)	PT01080	PT01085	04/04/25	04/11/25	07/18/25	07/25/25	10/17/25	10/24/25
Cardiac Markers - 3 sample (TM)	PT01230	PT01255	04/04/25	04/11/25			10/17/25	10/24/25
Cardiac Markers - 5 sample (IE)	PT01260	PT01270	04/04/25	04/11/25	07/18/25	07/25/25	10/17/25	10/24/25
Chemistry/Endocrinology/Therapeutic Drugs 1-11 (CET)	PT01310	PT01326	04/04/25	04/11/25	07/18/25	07/25/25	10/17/25	10/24/25
Chemistry/Endocrinology/Therapeutic Drugs 12-21 (CET)	PT01314	PT01326	04/04/25	04/11/25	07/18/25	07/25/25	10/17/25	10/24/25
Chemistry/Endocrinology/Therapeutic Drugs 22-30 (CET)	PT01318	PT01326	04/04/25	04/11/25	07/18/25	07/25/25	10/17/25	10/24/25
Chemistry/Endocrinology/Therapeutic Drugs 31+ (CET)	PT01322	PT01326	04/04/25	04/11/25	07/18/25	07/25/25	10/17/25	10/24/25
Chemistry - Waived Methods (WC)	PT01282	PT01284	04/04/25	04/11/25			10/17/25	10/24/25
hCG, serum - qualitative (HCG)	PT01480	PT01490	04/04/25	04/11/25	07/18/25	07/25/25	10/17/25	10/24/25
hCG, serum - qualitative (HCG) - Add on to CET	PT01495		04/04/25		07/18/25		10/17/25	
Hemoglobin A1c (GHR)	PT01524	PT01529	04/04/25	04/11/25	07/18/25	07/25/25	10/17/25	10/24/25
Hemoglobin A1c - Afinion (GHRA)	PT01525	PT01527	04/04/25	04/11/25	07/18/25	07/25/25	10/17/25	10/24/25
Immunoassay Chemistry (CS)	PT01683	PT01684	04/04/25	04/11/25	07/18/25	07/25/25	10/17/25	10/24/25
Immunoassay Chemistry (CSB)	PT01712	PT01713	04/04/25	04/11/25	07/18/25	07/25/25	10/17/25	10/24/25
Tumor Markers (MT)	PT01752	PT01753	04/04/25	04/11/25	07/18/25	07/25/25	10/17/25	10/24/25
Urine Drug Adulteration Test (UDA)	PT01950	PT01955	04/04/25	04/11/25	07/18/25	07/25/25	10/17/25	10/24/25
Urine Drug Screen (UD)	PT01810	PT01835	04/04/25	04/11/25	07/18/25	07/25/25	10/17/25	10/24/25
Urine Drug Screen - Ethyl Glucuronide (ETG)	PT01980		04/04/25		07/18/25		10/17/25	

Special Chemistry			Special Chem 1		Special Chem 2			
			Ships - 02/17/25		Ships - 08/25/25			
Product Name	Item #	QE Item #	Due	QE Due	Due	QE Due		
Ammonia (NH)	PT01020	PT01045	03/07/25	03/14/25	09/12/25	09/19/25		
Body Fluid Chemistry (PC)	PT01120	PT01145	03/07/25	03/14/25	09/12/25	09/19/25		
Body Fluid pH - Visual (PH)	PT01150	PT01175	03/07/25	03/14/25	09/12/25	09/19/25		
Hemoglobin A1c - Waived Methods (GH)	PT01500	PT01522	03/07/25	03/14/25	09/12/25	09/19/25		
Hemoglobin A1c - Afinion - Waived Methods (GHA)	PT01530	PT01555	03/07/25	03/14/25	09/12/25	09/19/25		
Procalcitonin (PCT)	PT01900	PT01905	03/07/25	03/14/25	09/12/25	09/19/25		
Spinal Fluid Chemistry (SF)	PT01720	PT01745	03/07/25	03/14/25	09/12/25	09/19/25		
Spinal Fluid Chemistry (SF) - Add on to PC	PT01722		03/07/25		09/12/25			
Urine Chemistry 1-3 (CU)	PT01780	PT01785	03/07/25	03/14/25	09/12/25	09/19/25		
Urine Chemistry 4-10 (CU)	PT01786	PT01791	03/07/25	03/14/25	09/12/25	09/19/25		
Urine Chemistry II+ (CU)	PT01792	PT01797	03/07/25	03/14/25	09/12/25	09/19/25		
Urine Chemistry Afinion (ACR)	PT01960		03/07/25		09/12/25			

SHIPPING SCHEDULE

SHIPPING SCHEDULE

Coag, Coag QA, and Heme Reg are a combined shipment

Coag*			Coag 1		Coag 2		Coag 3	
			Ships - 02/03/25		Ships - 06/02/25		Ships - 09/08/25	
Product Name	Item #	QE Item #	Due	QE Due	Due	QE Due	Due	QE Due
Coagulation Basic (CA)	PT02060	PT02070	02/21/25	02/28/25	06/20/25	06/27/25	09/26/25	10/03/25
Protime / INR - CoaguChek XS (PXS)	PT02350	PT02360	02/21/25	02/28/25	06/20/25	06/27/25	09/26/25	10/03/25
Protime / INR - i-STAT and Coag-Sense (PRC)	PT02370	PT02380	02/21/25	02/28/25	06/20/25	06/27/25	09/26/25	10/03/25
Coag QA*			Coag QA 1				Coag QA 2	
			Ships - 02/03/25				Ships - 09/08/25	
Product Name	Item #	QE Item #	Due	QE Due			Due	QE Due
Activated Clotting Time (CT)	PT02030	PT02052	02/21/25	02/28/25			09/26/25	10/03/25
D-dimer (DD)	PT02080	PT02105	02/21/25	02/28/25			09/26/25	10/03/25
INR - CoaguChek Waived (CXSW)	PT02320	PT02345	02/21/25	02/28/25			09/26/25	10/03/25
INR - Coag-Sense Waived (CW)	PT02310	PT02315	02/21/25	02/28/25			09/26/25	10/03/25
Heme Reg*			Heme Reg 1		Heme Reg 2		Heme Reg 3	
			Ships - 02/03/25		Ships - 06/02/25		Ships - 09/08/25	
Product Name	Item #	QE Item #	Due	QE Due	Due	QE Due	Due	QE Due
Hematology - Cell Identification (XI)	PT02220		02/21/25		06/20/25		09/26/25	
Hematology - Comprehensive (AF3)	PT02270	PT02280	02/21/25	02/28/25	06/20/25	06/27/25	09/26/25	10/03/25
Hematology - Comprehensive (AF4)	PT02285	PT02286	02/21/25	02/28/25	06/20/25	06/27/25	09/26/25	10/03/25
Hematology - Comprehensive (AF5)	PT02290	PT02300	02/21/25	02/28/25	06/20/25	06/27/25	09/26/25	10/03/25
Hematology - Limited Sysmex (AS)	PT02200	PT02210	02/21/25	02/28/25	06/20/25	06/27/25	09/26/25	10/03/25
Hematology - Limited (AT)	PT02190	PT02195	02/21/25	02/28/25	06/20/25	06/27/25	09/26/25	10/03/25
Reticulocytes - Beckman Coulter (RTB)	PT02442	PT02444	02/21/25	02/28/25			09/26/25	10/03/25
Reticulocytes - Manual and Some Automated (RT)	PT02420	PT02425	02/21/25	02/28/25			09/26/25	10/03/25
Reticulocytes - Sysmex (RTS)	PT02432	PT02434	02/21/25	02/28/25			09/26/25	10/03/25

Fetal Hb*			Fetal Hb 1		Fetal Hb 2			
			Ships - 04/21/25		Ships - 10/27/25			
Product Name	Item #		Due		Due			
Fetal Red Cell Detection (HBF)	PT04350		05/09/25		11/14/25			

Blood Bank*			Blood Bank 1		Blood Bank 2		Blood Bank 3	
			Ships - 02/24/25		Ships - 06/16/25		Ships - 10/06/25	
Product Name	Item #	QE Item #	Due	QE Due	Due	QE Due	Due	QE Due
Blood Bank - Comprehensive (AB)	PT04120	PT04130	03/14/25	03/21/25	07/08/25	07/15/25	10/24/25	10/31/25
Blood Bank - Limited (AB)	PT04140	PT04150	03/14/25	03/21/25	07/08/25	07/15/25	10/24/25	10/31/25
Direct Antiglobulin Test (DAT)	PT04145		03/14/25				10/24/25	

* Delivery for these products will be via overnight courier.

SHIPPING SCHEDULE

Immunology			Immunology 1 Ships - 01/21/25		Immunology 2 Ships - 05/12/25		Immunology 3 Ships - 09/02/25	
Product Name	Item #	QE Item #	Due	QE Due	Due	QE Due	Due	QE Due
CRP Immunoserology (XP)	PT04160	PT04185	02/07/25	02/14/25			09/19/25	09/26/25
Helicobacter pylori Serology (HL)	PT04010		02/07/25				09/19/25	
Hepatitis (YB)	PT04190		02/07/25		05/30/25		09/19/25	
Hepatitis (YB) - Add on to HV or HVC	PT04195		02/07/25		05/30/25		09/19/25	
Hepatitis C - Waived Methods (YBC)	PT04192	PT04193	02/07/25	02/14/25			09/19/25	09/26/25
Anti-HIV (HV)	PT04020	PT04030	02/07/25	02/14/25	05/30/25	06/06/25	09/19/25	09/26/25
Anti-HIV - Waived Methods (HVW)	PT04040	PT04062	02/07/25	02/14/25			09/19/25	09/26/25
Infectious Disease Serology (MMV)	PT04320		02/07/25				09/19/25	
Lyme Disease Serology (LY)	PT04200		02/07/25				09/19/25	
Mono Immunoserology (ZM)	PT04210		02/07/25		05/30/25		09/19/25	
Mono Immunoserology - Waived Methods (MW)	PT04220	PT04245	02/07/25	02/14/25			09/19/25	09/26/25
Mycoplasma Antibody (MP)	PT04300		02/07/25				09/19/25	
Rheumatoid Factor (ZR)	PT04250		02/07/25		05/30/25		09/19/25	
Rubella IgM Immunoserology (XM)	PT04330		02/07/25				09/19/25	
Rubella Immunoserology (XU)	PT04260		02/07/25		05/30/25		09/19/25	
Syphilis Serology (SS)	PT04270	PT04280	02/07/25	02/14/25	05/30/25	06/06/25	09/19/25	09/26/25
Syphilis Serology - Waived Methods (SSW)	PT04272	PT04273	02/07/25	02/14/25			09/19/25	09/26/25
Thyroid Antibodies (THY)	PT04310		02/07/25				09/19/25	

Bioterrorism Preparedness			Bioterrorism 1 Ships - 03/10/25		Bioterrorism 2 Ships - 10/06/25	
Product Name	Item #		Due		Due	
Bioterrorism Preparedness Exercise (BPE)	PT06010		03/28/25		10/24/25	

CRE			CRE 1 Ships - 03/24/25		CRE 2 Ships - 10/20/25	
Product Name	Item #	QE Item #	Due	QE Due	Due	QE Due
Carbapenem Resistance Detection (CR)	PT05330	PT05335	04/11/25	04/18/25	11/07/25	11/14/25

Frozen Micro*			Frozen Micro 1 Ships - 04/14/25		Frozen Micro 2 Ships - 10/06/25	
Product Name	Item #	QE Item #	Due	QE Due	Due	QE Due
Rabies by DFA (RA)	PT06130	PT06137	05/02/25	05/09/25	10/24/25	10/31/25
Rabies by dRIT (RA)	PT06140	PT06147	05/02/25	05/09/25	10/24/25	10/31/25

* Delivery for these products will be via overnight courier.

Mycobacteriology			Mycobacteriology 1 Ships - 01/27/25		Mycobacteriology 2 Ships - 08/04/25	
Mycobacteriology (Culture)#			Due	QE Due	Due	QE Due
Product Name	Item #	QE Item #				
Mycobacteriology Culture (MB)	PT06060		03/28/25		10/03/25	
Mycobacteriology			Ships - 03/10/25		Ships - 09/15/25	
Product Name	Item #	QE Item #	Due	QE Due	Due	QE Due
Acid-Fast Stain (MA)	PT06000		03/28/25		10/03/25	
Acid-Fast Stain (MA) - Add on to MB	PT06005		03/28/25		10/03/25	
M. tuberculosis by Molecular Methods (TB)	PT06050	PT06055	03/28/25	04/04/25	10/03/25	10/10/25

#Mycobacteriology Culture module ships six weeks ahead of the other Mycobacteriology modules.

SHIPPING SCHEDULE

Bacti_Viral			Bacti_Viral 1		Bacti_Viral 2		Bacti_Viral 3	
Bacti_Viral (Mycology Culture)#			Ships - 01/06/25		Ships - 05/05/25		Ships - 08/18/25	
Product Name	Item #	QE Item #	Due	QE Due	Due	QE Due	Due	QE Due
Mycology - Comprehensive (MY)	PT06070		02/28/25		06/27/25		10/10/25	
Mycology - Dermatophyte (DM)	PT06090		02/28/25		06/27/25		10/10/25	
Mycology - Yeast (YE)	PT06100		02/28/25		06/27/25		10/10/25	
Bacti_Viral			Ships - 02/10/25		Ships - 06/09/25		Ships - 09/22/25	
Product Name	Item #	QE Item #	Due	QE Due	Due	QE Due	Due	QE Due
Bacterial Antigen (BA)	PT05000		02/28/25		06/27/25		10/10/25	
Bacterial Vaginosis Detection - Waived Methods (BV)	PT05005		02/28/25				10/10/25	
Bacteriology - Comprehensive (MC)	PT05030		02/28/25		06/27/25		10/10/25	
Bacteriology - Limited (MC)	PT05040		02/28/25		06/27/25		10/10/25	
Blood Culture (CB)	PT05360	PT05365	02/28/25	03/07/25	06/27/25	07/08/25	10/10/25	10/17/25
Blood Parasites (PAB)	PT06020		02/28/25		06/27/25		10/10/25	
Blood Pathogen Multiplex (BPM)	PT05481		02/28/25		06/27/25		10/10/25	
Bordetella by Molecular Methods (BOR)	PT05054		02/28/25		06/27/25		10/10/25	
C. difficile (CD)	PT05060	PT05065	02/28/25	03/07/25	06/27/25	07/08/25	10/10/25	11/17/25
CT/GC/TV Detection (AC)	PT05070		02/28/25		06/27/25		10/10/25	
Enteric Pathogens (NP)	PT05080		02/28/25		06/27/25		10/10/25	
GI Multiplex (EP)	PT05380		02/28/25		06/27/25		10/10/25	
GI Multiplex Add-on (EP)	PT05381		02/28/25		06/27/25		10/10/25	
Giardia/Cryptosporidium Antigen Detection (GI)	PT06030		02/28/25		06/27/25		10/10/25	
Gram Stain (GS)	PT05090	PT05100	02/28/25	03/07/25	06/27/25	07/08/25	10/10/25	10/17/25
Group A Strep (ST)	PT05170		02/28/25		06/27/25		10/10/25	
Group A Strep Antigen (SA)	PT05110	PT05120	02/28/25	03/07/25	06/27/25	07/08/25	10/10/25	10/17/25
Group B Strep / Neisseria gonorrhoeae (SB)	PT05180	PT05185	02/28/25	03/07/25	06/27/25	07/08/25	10/10/25	10/17/25
Helicobacter pylori Antigen, Stool (HPSA)	PT05401	PT05403	02/28/25	03/07/25	06/27/25	07/08/25	10/10/25	10/17/25
Helicobacter pylori - Rapid Urease (RUR)	PT05500		02/28/25				10/10/25	
HSV Molecular (HSV)	PT06220		02/28/25		06/27/25		10/10/25	
KOH Slides (KOH)	PT06230		02/28/25				10/10/25	
Legionella Antigen (LGA)	PT05440	PT05441	02/28/25	03/07/25	06/27/25	07/08/25	10/10/25	10/17/25
Meningitis Multiplex (MEP)	PT05451		02/28/25		06/27/25		10/10/25	
MRSA/VRE (MR)	PT05200	PT05210	02/28/25	03/07/25	06/27/25	07/08/25	10/10/25	10/17/25
Mycoplasma genitalium Molecular (MG)	PT05461		02/28/25		06/27/25		10/10/25	
Parasitology - Comprehensive (PA)	PT06110		02/28/25		06/27/25		10/10/25	
Respiratory Multiplex (RP)	PT06240	PT06244	02/28/25	03/07/25	06/27/25	07/08/25	10/10/25	10/17/25
Respiratory Multiplex Add-on (RP)	PT06241		02/28/25		06/27/25		10/10/25	
SARS-CoV-2 Antigen (CV)	PT06288	PT06289	02/28/25	03/07/25	06/27/25	07/08/25	10/10/25	10/17/25
SARS-CoV-2 Antigen - Waived Methods (CVW)	PT06290	PT06295	02/28/25	03/07/25			10/10/25	10/17/25
SARS-CoV-2 Molecular Liquid (CLM)	PT06300	PT06305	02/28/25	03/07/25	06/27/25	07/08/25	10/10/25	10/17/25
SARS/Viral Molecular (CM)	PT06270	PT06275	02/28/25	03/07/25	06/27/25	07/08/25	10/10/25	10/17/25
SARS/Viral Molecular - Waived Methods (CMW)	PT06280	PT06285	02/28/25	03/07/25			10/10/25	10/17/25
Shiga Toxin (SHG)	PT05241	PT05242	02/28/25	03/07/25	06/27/25	07/08/25	10/10/25	10/17/25
Throat/Urine Bacteriology (TU)	PT05250		02/28/25		06/27/25		10/10/25	
Throat/Urine Bacteriology - Limited (TU)	PT05260		02/28/25		06/27/25		10/10/25	
Trichomonas - Waived Methods (TV)	PT05310	PT05315	02/28/25	03/07/25			10/10/25	10/17/25
Urine Culture (UC)	PT05270		02/28/25		06/27/25		10/10/25	
UTI Multiplex (UTI)	PT05511		02/28/25		06/27/25		10/10/25	
Vaginal Pathogens (VP)	PT05280	PT05290	02/28/25	03/07/25	06/27/25	07/08/25	10/10/25	10/17/25
Viral - Limited (VA)	PT06150	PT06160	02/28/25	03/07/25	06/27/25	07/08/25	10/10/25	10/17/25
Viral - Waived Methods (VCW)	PT06170	PT06195	02/28/25	03/07/25			10/10/25	10/17/25
Viral with Rotavirus (VA)	PT06200	PT06210	02/28/25	03/07/25	06/27/25	07/08/25	10/10/25	10/17/25
VP Molecular (VPM)	PT05470		02/28/25		06/27/25		10/10/25	

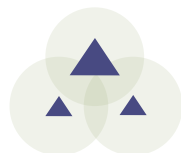
#Mycology Culture modules ship five weeks ahead of the other Bacti_Viral modules.

SHIPPING SCHEDULE

SHIPPING SCHEDULE

Misc QA_POC			Misc QA_POC 1		Misc QA_POC 2	
Product Name	Item #	QE Item #	Ships - 03/31/25		Ships - 10/13/25	
			Due	QE Due	Due	QE Due
Body Fluid Cell Count - Automated (BFA)	PT03030	PT03037	04/18/25	04/25/25	10/31/25	11/07/25
Body Fluid Cell Count - Manual (BFM)	PT03040		04/18/25		10/31/25	
Body Fluid Microscopy (BF)	PT03050		04/18/25		10/31/25	
Fecal Lactoferrin (LF)	PT03060		04/18/25		10/31/25	
Fecal Occult Blood (OC)	PT03071	PT03074	04/18/25	04/25/25	10/31/25	11/07/25
Fecal Occult Blood (OC) - POC	PT03073	PT03074	04/18/25	04/25/25	10/31/25	11/07/25
Gastric Occult Blood (GO)	PT03110	PT03135	04/18/25	04/25/25	10/31/25	11/07/25
Glucose Whole Blood (WBG)	PT01880	PT01895	04/18/25	05/02/25	10/31/25	11/14/25
Glucose Whole Blood (WBG) - POC	PT01883	PT01895	04/18/25	05/02/25	10/31/25	11/14/25
Group A Strep - Waived Methods (WS)	PT05130	PT05155	04/18/25	04/25/25	10/31/25	11/07/25
Group A Strep - Waived Methods (WS) - POC	PT05135	PT05155	04/18/25	04/25/25	10/31/25	11/07/25
Hematocrit - Waived Methods (HW)	PT02150	PT02175	04/18/25	04/25/25	10/31/25	11/07/25
Hemoglobin - HemoCue Hb 301 & Hb 801 - Waived (HWH)	PT01455	PT01465	04/18/25	04/25/25	10/31/25	11/07/25
Hemoglobin - HemoCue Hb 301 & Hb 801 - Waived (HWH) - POC Add-on	PT01456	PT01465	04/18/25	04/25/25	10/31/25	11/07/25
Hemoglobin - Waived Methods (HWG)	PT01450	PT01475	04/18/25	04/25/25	10/31/25	11/07/25
Hemoglobin - Waived Methods (HWG) - POC Add-on	PT01451	PT01475	04/18/25	04/25/25	10/31/25	11/07/25
Mono Immunoserology - Waived Methods (MW) - POC Add-on	PT04222		04/18/25		10/31/25	
Provider Performed Microscopy (PM)	PT03170	PT03195	04/18/25	04/25/25	10/31/25	11/07/25
Provider Performed Microscopy (PM) - POC	PT03175	PT03195	04/18/25	04/25/25	10/31/25	11/07/25
Sedimentation Rate (SR)	PT02450	PT02465	04/18/25	04/25/25	10/31/25	11/07/25
Sedimentation Rate - iSED and Alifax (SRI)	PT02520	PT02525	04/18/25	04/25/25	10/31/25	11/07/25
Sedimentation Rate - Sedimat 15, ESR STAT-6 and STAT PLUS (SRA)	PT02470	PT02485	04/18/25	04/25/25	10/31/25	11/07/25
Sickle Cell Screen (SK)	PT02490	PT02515	04/18/25	04/25/25	10/31/25	11/07/25
Urinalysis/Urine hCG (UR)	PT03260	PT03285	04/18/25	04/25/25	10/31/25	11/07/25
Urinalysis/Urine hCG (UR) - POC	PT03265	PT03285	04/18/25	04/25/25	10/31/25	11/07/25
Urine hCG - 5 samples (UH)	PT03290	PT03315	04/18/25	04/25/25	10/31/25	11/07/25
Urine Sediment Identification (SU)	PT03320	PT03345	04/18/25	04/25/25	10/31/25	11/07/25

Semen		Semen 1		Semen 2	
Product Name	Item #	Ships - 05/27/25		Ships - 10/20/25	
		Due		Due	
Amniotic Fluid Detection (AE)	PT03000	06/13/25		11/07/25	
Fetal Fibronectin (FFN)	PT03100	06/13/25		11/07/25	
Post-Vasectomy Semen Analysis (PV)	PT03140	06/13/25		11/07/25	
Post-Vasectomy with Motility (PVM)	PT03145	06/13/25		11/07/25	
Sperm Count (SP)	PT03200	06/13/25		11/07/25	
Sperm Morphology pre-stained slide (SMS)	PT03220	06/13/25		11/07/25	
Sperm Morphology unstained slide (SM)	PT03210	06/13/25		11/07/25	
Sperm Motility (MOT)	PT03230	06/13/25		11/07/25	



INDEX

A

ABO group	27
A/C ratio	17
Acetaminophen	13
Acetone	10
6-AM (6-Acetylmorphine)	18
Acid-fast stain	45
Acinetobacter	34
Actinotignum shaalii	34
Activated clotting time (ACT)	19
Activated partial thromboplastin time (APTT)	19
Adenovirus	35, 50
Aerobic Actinomycetes identification	46
Aerococcus	34
Aeromonas	39
Alanine Aminotransferase (ALT)	13, 14
Albumin	13, 14
Albumin, body fluid	11
Alcohol (ethanol)	10
Alcohol (ethanol), urine	18
Alkaline phosphatase (ALKP)	13, 14
Alpha-fetoprotein	13
Amikacin	13
Ammonia	10
Amniotic fluid detection	11, 51
Amphetamines	18
Amylase	13, 14
Amylase, body fluid	11
Amylase, urine	17
Anaerobic bacteria culture	36
Andrology	55, 56
Antibody identification, blood bank	27
Anti-HIV	29, 60
Antimicrobial susceptibility	36, 43
Anti-Thyroglobulin	32
Anti-Thyroid Peroxidase	32
Aspartate Aminotransferase (AST)	13, 14
Astrovirus	35

B

Bacterial identification	34, 38, 39, 42, 44, 48
Bacterial vaginosis detection	37, 44
Bacteroides	34
Bacteriology	33-44
Barbiturates	18
Benzodiazepines	18
Beta-2 Microglobulin	17
Beta-hydroxybutyrate	10
Bilirubin, direct	10, 13
Bilirubin, total	10, 13, 14
Bilirubin, urine	53
Bioterrorism Preparedness Exercise	37
Blood Bank	27
Blood culture	36, 37
Blood Pathogen Multiplex	38
Blood Gases	8, 9
Blood Lead	11, 60
Blood parasite identification	47
BNP	12
Bordetella	34, 38
Borrelia burgdorferi (Lyme disease)	30
Buprenorphine	18

C

C. difficile	34, 36, 38
C-peptide	16
C-reactive protein (CRP)	12, 28
CA 125	17
CA 15-3	17
CA 19-9	17
CA 27.29	17
Calcium, ionized	8
Calcium, total	13, 14
Calcium, urine	17
Campylobacter	34, 39
Candida	34, 44
Cannabinoids (THC)	18
Carbamazepine	13
Carbapenem resistance	38
Carbon dioxide (CO ₂)	8, 13, 14
Carboxyhemoglobin	9
Carcinogenic embryonic antigen (CEA)	16
Cardiac Markers	12
Cell identification, body fluid	51
Cell identification, hematology	23
Chemistry - Body Fluid	11
Chemistry - Immunoassay	16
Chemistry - Spinal Fluid	16
Chemistry - Urine	17
Chemistry - Waived Methods	9, 14
Chlamydia	34, 39
Chloride	8, 9, 13, 14
Chloride, spinal fluid	16
Chloride, urine	17
Cholesterol, body fluid	11
Cholesterol, HDL	13, 14
Cholesterol, LDL	13, 14
Cholesterol, total	13, 14
Citrobacter	34
CK-MB	12
Clostridium	34
Coagulation	19, 20
Cocaine metabolites	18
Colony Count (urine culture)	36, 43, 44
Compatibility testing	27
Coronavirus	35
Cortisol	13
Cotinine	18
Creatine Kinase (CK)	12, 13, 14
Creatinine	8, 9, 13, 14
Creatinine, body fluid	11
Creatinine, urine	17, 18
Cryptococcus	34
Cryptosporidium	34, 47
Crystal identification, body fluid	51
Cyclospora	34
Cytomegalovirus (CMV)	35

D

DAT	27
D-dimer	12, 19
Dermatophyte	46
DHEA Sulfate	16
Digoxin	13

INDEX

E

EDDP	18
Endocrinology	13
Entamoeba	34
Enteric pathogen identification	36
Enterobacter	34
Enterococcus	34
Enterovirus (EV)	35
Eosinophils, nasal smear	52
Epidermphyton floccosum	34
Erythrocyte count (RBC), blood	22
Erythrocyte count (RBC), body fluid	51
Erythrocyte sedimentation rate	24
Escherichia (E. coli)	34, 39
Estradiol	16
Ethanol (alcohol)	10
Ethanol (alcohol), urine	18
Ethyl Glucuronide (EtG)	18

F

Fecal occult blood	52, 54
Fecal smear for leukocytes	52
Fentanyl	18
Fern test	52
Ferritin	16
Fetal fibronectin	52
Fetal hemoglobin	25
Fetal Screen	25
Fetal Red Cell Detection	25
Fibrinogen	19
Folate	16
Follicle stimulating hormone (FSH)	16
Free thyroxine (FT4)	13
Free triiodothyronine (FT3)	13
Fungal Identification	34, 38, 42, 44

G

Gamma glutamyltransferase (GGT)	13, 14
Gardnerella detection	44
Gastric occult blood	52
Gentamicin	13
GI multiplex	39
Giardia	34, 47
Glucose	8, 9, 13, 14
Glucose, body fluid	11
Glucose, spinal fluid	16
Glucose, urine	17, 53
Glucose, whole blood	14, 54
Glycohemoglobin (Hemoglobin A1c)	15
Gram stain reaction/morphology	36, 37, 40, 43, 44
Group A Strep	36, 40, 43, 54
Group B Strep	36, 41

H

Haemophilus	34
hCG, serum	13
hCG, urine	53
Helicobacter pylori (total antibody)	28
Helicobacter pylori Antigen, Stool	41
Hematocrit	8, 9, 22, 25, 54
Hematology	21-26
Hemoglobin	8, 9, 22, 26, 54

Hemoglobin A1c (Glycohemoglobin)	15
Hemoglobin/Blood, urine	53
Hemoglobin F	25
Hepatitis - Anti-HAV, IgM	28
Hepatitis - Anti-HBc (total antibody)	28
Hepatitis - Anti-HBc, IgM	28
Hepatitis - Anti-HBs	28
Hepatitis - Anti-HCV	28
Hepatitis - HBsAg	28
Herpes simplex virus (HSV)	35, 48
HIV (Anti-HIV)	29, 60
HIV-p24 Antigen	29, 60
Homocysteine	16
hs-CRP	12
Human herpesvirus 6 (HHV-6)	35
Human metapneumovirus	35
Human parechovirus (HPeV)	35
Human Rhinovirus/Enterovirus	35

I

IG	22
IIGFBP, amniotic fluid	51
Immunochemistry	27
Immunology	28-32
Infectious mononucleosis	30, 54
Influenza	35, 49, 50
INR	19, 20
Insulin	16
Ionized calcium	8
Ionized magnesium	8
IPF	22, 23
IRF	23
Iron binding capacity (TIBC)	13
Iron, total	13

K

Ketones	10
Ketones, urine	53
Klebsiella	34
KOH (skin & vaginal)	52
KOH Preparation	46

L

Lactate (Lactic acid)	8, 13
Lactate (Lactic acid), spinal fluid	16
Lactate dehydrogenase (LDH)	13
Lactate dehydrogenase (LDH), body fluid	11
Lactic acid	16
Lactoferrin	51
Lead, blood	11, 60
Legionella	41
Leukocyte count (WBC), blood	22
Leukocyte count (WBC), body fluid	51
Leukocyte esterase	53
Leukocytes, fecal smear	52
Lipase	13
Listeria	34
Lithium	13
Luteinizing hormone (LH)	16
Lyme disease (Borrelia burgdorferi)	30

M

Magnesium	13
Magnesium, ionized	.8
Magnesium, urine	17
MCH	22
MCHC	22
MCV	22
MDMA (Ecstasy)	18
Measles IgG, IgM	29
Meningitis Multiplex	42
Methadone	18
Methamphetamines	18
Methaqualone	18
Methemoglobin	.9
Methicillin-resistant Staph aureus (MRSA)	.36, 42
Microalbumin	17
Mold, yeast, and yeast-like organism identification	46
Mononucleosis infectious	.30, 54
Morganella	34
MPV	22
Multiplex Panels	38, 39, 42, 44, 48
Mumps IgG, IgM	29
Mycobacteriology, tuberculosis	45
Mycology	.34, 46
Mycoplasma	.34, 42
Myoglobin	12

N

Nasal smear for eosinophils	52
Neisseria gonorrhoeae	.36, 39, 41
Neisseria meningitidis	34
Nitrites	18, 53
Norovirus	35
NT-proBNP	12
Nucleated red blood cells (NRBC)	22

O

Occult blood, fecal	52, 54
Occult blood, gastric	52
Opiates	18
Osmolality	13
Osmolality, urine	17
Oxidants	18
Oxycodone	18
Oxyhemoglobin	.9

P

p24 Antigen	29, 60
PAMG-1 protein, amniotic fluid	51
Parainfluenza	35
Parasite identification	.34, 39
Parasitology	.34, 47
pCO ₂	.8
Peptostreptococcus	34
pH, amniotic fluid	.11
pH, blood	.8
pH, body fluid	.11
pH, urine	18, 53
Phencyclidine (PCP)	18
Phenobarbital	13

Phenytoin (Dilantin)	13
Phosphorus	13, 14
Phosphorus, urine	17
Pinworm preparation	52
Platelet count	22
Plesiomonas	.34, 39
pO ₂	.8
Post-vasectomy	55
Potassium	8, 13, 14
Potassium, urine	17
PPI2/AFP, amniotic fluid	51
Prealbumin	15
Prevotella	34
Procalcitonin	16
Progesterone	16
Prolactin	16
Propoxyphene	18
Prostate-specific antigen (PSA), free	17
Prostate-specific antigen (PSA), total	16
Protein, body fluid	.11
Protein, spinal fluid	16
Protein, total	13, 14
Protein, urine	17, 53
Proteus	34
Protine (PT)	19, 20
Providencia	34
Provider Performed Microscopy	.52, 54
Pseudomonas	34
PTH, intact	16

R

Rabies Antigen	48
Rapid Urease	41
RBC (Erythrocyte count), blood	22
RBC (Erythrocyte count), body fluid	51
RDW	22
Re-He	23
Resistance genes	35, 38, 44
Respiratory Multiplex	48
Respiratory syncytial virus (RSV)	35, 49, 50
Reticulocyte count	23
Rh (D) typing	27
Rheumatoid factor	31
Rhinovirus/Enterovirus	35
Rifampin resistance screen (M. tuberculosis)	45
Rotavirus	.35, 50
Rubella IgG	31
Rubella IgM	31
Rupture of fetal membranes	.11, 51

S

Salicylate	13
Salmonella	.34, 39
Sapovirus	35
SARS-CoV-2	35, 48, 49
Serratia	34
Shiga toxin	43
Shigella	39
Sickle cell screen	26
Sodium	8, 13, 14
Sodium, urine	17
Specific gravity	18, 53
Sperm count	55

INDEX

Sperm morphology 56
Sperm motility 55, 56
Sperm progressive motility 56
Staphylococcus 34, 42
Stenotrophomonas 34
Stool parasite identification 47
Strep A antigen/culture/molecular 36, 40, 43, 54
Strep B culture/molecular 36, 41
Streptococcus 34, 37
Syphilis 32

T

T3 Uptake / T-Uptake 13
Testosterone, total 16
Theophylline 13
Therapeutic Drugs 13
Thyroglobulin Anibody 32
Thyroid Antibodies 32
Thyroid Peroxidase/ Microsomal Anibody 32
Thyroid-stimulating hormone (TSH) 13
Thyroxine (T4) 13
TIBC (Iron binding capacity) 13
Tobramycin 13
Tramadol 18
Transferrin 16
Trichomonas detection 39, 44, 47
Trichophyton rubrum 34
Tricyclic antidepressants 18
Triglycerides 13, 14
Triglycerides, body fluid 11
Triiodothyronine (T3) 13
Troponin I 12
Troponin T 12
Tumor Markers 13

U

UIBC 13
Unexpected antibody detection 27
Urea nitrogen, blood (BUN) 8, 13, 14
Urea nitrogen, urine 17
Ureaplasma urealyticum 34
Urease 41
Uric acid 13, 14
Uric acid, urine 17
Urinalysis 53, 54
Urine adulteration test 18
Urine culture 36, 43, 44
Urine drug screen 18
Urine hCG 53, 54
Urine sediment 52, 53
Urobilinogen 53
UTI Multiplex 44

V

Vaginal wet preparation 52
Valproic acid 13
Vancomycin 13
Vancomycin-resistant Enterococcus (VRE) 36, 42
Varicella zoster IgG, IgM 29
Varicella zoster virus (VZV) 35
Vibrio 34, 39
Viral identification 35, 39, 42, 48

Virology 35, 48, 49, 50
Vitamin B12 16
25-OH Vitamin D, total 16

W

WBC (Leukocyte count), blood 22
WBC (Leukocyte count), body fluid 51
WBC differential - automated 22
Whole Blood Glucose 14, 54
Wound culture 36

Y

Yeast and yeast-like organism identification 46
Yersinia 34, 39

Z

YOUR LAB OUR MISSION

WSLH Proficiency Testing



With WSLH PT, you receive reliable, affordable, and easy-to-use laboratory proficiency testing products with rapid access to results.

You may request a free no-obligation quote at any time. We also offer additional services throughout the year, including:

- Calibration verification products
- Assayed Samples
- Off-schedule and pre-licensure events
- Online training and competency courses

We are your PT provider, backed by a national public health lab and a Big Ten university. Our unique affiliations provide you with the technical expertise and educational resources to set you up for PT success.

In 1966, the Wisconsin State Lab of Hygiene created proficiency testing programs to improve laboratory quality. From these efforts, WSLH PT was established. Today, we serve clinical laboratories like yours throughout the United States, and globally.

WSLH PT is approved by CMS, and accepted by CAP, COLA, and The Joint Commission. To learn more, please visit our site at wslhpt.org.

