

WSLH Proficiency Testing
WISCONSIN STATE LABORATORY OF HYGIENE
UNIVERSITY OF WISCONSIN-MADISON

CLINICAL PRODUCT CATALOG

2024



A
LEGACY
OF
EXCELLENCE
AND
SERVICE

1966 - Present

Under the leadership of Dr. Stanley L. Inhorn, the Wisconsin State Lab of Hygiene creates a proficiency testing program in 1966 to serve medical laboratories.

With the Clinical Laboratory Improvement Amendments (CLIA) of 1988, WSLH PT expands, serving thousands of laboratories across the United States.

"Service and excellence, it's in our DNA. When you partner with us, you are choosing a PT provider who is going to give you the support you need to achieve your quality assurance goals."

Mike Argall, MT (ASCP), Director of WSLH PT

TABLE OF CONTENTS

4	Why WSLH PT?
8	Chemistry - Blood Gas/Oximetry
10	Chemistry - General
19	Coagulation
21	Hematology
27	Immunohematology - Blood Bank
28	Immunology
33	Microbiology - Bacteriology
44	Microbiology - Mycobacteriology
45	Microbiology - Mycology
47	Microbiology - Parasitology
49	Microbiology - Virology
52	Urinalysis/Microscopy/Misc.
56	Andrology
57	Online Training and Competency
60	Assayed Sample Sets
61	Additional Products
62	Shipping Schedule
68	Index



YOUR LAB, OUR MISSION

Reliable, affordable & easy-to-use proficiency testing with rapid access to results.

WSLH PT, backed by a national public health laboratory and a Big Ten university.

Approved by CMS and accepted by CAP, COLA, & The Joint Commission.

OUR HISTORY

In 1966, WSLH PT was developed by the Wisconsin State Lab of Hygiene (WSLH) to create proficiency testing programs that improved laboratory quality. Today, as part of this national public health laboratory, we are proud to provide you with the highest quality service to meet your needs.

Based in Madison, Wisconsin, we are affiliated with the state's flagship higher education institution, the University of Wisconsin-Madison. Our unique affiliations provide you with the technical expertise and educational resources to set you up for PT success.

OUR COMMUNITY

Each of our clinical proficiency testing programs has a dedicated Medical Technologist with at least 5 years of laboratory bench experience, extensive instrument knowledge, and exceptional customer service skills to meet your laboratory's needs. WSLH PT is approved by CMS and accepted by CAP, COLA, and The Joint Commission.



WHY WSLH PT?

Reliable, affordable, & easy-to-use proficiency testing products

- Provider-centered customer service. Your standard in technical expertise
- Replacement samples, off-schedule samples, and evaluation samples at low cost
- Easy access to submission reports, worksheets, instructions, and more
- Staggered shipments ease the burden on your lab staff
- 14-day average turnaround time on evaluation reports



HOW CAN WE BEST SERVE YOU?

We want to know! To learn more about WSLH PT, to enroll, or discuss options, visit wslhpt.org or contact us at (800) 462-5261

Enrollment made easy

"Working with WSLH was an excellent experience." –Cathy S.

NEW CUSTOMERS

Submit a [New Customer PT Enrollment Form](#)

To order, submit a form online at wslhpt.org. Once you have submitted your form, customer service will assign your lab a WSLH PT ID number and email you an enrollment confirmation. You can expect to receive a confirmation letter and a customized shipping schedule via email within 24-48 hours of order receipt. Note: Experienced medical technologists are available Monday-Friday, 8:00am-4:30pm (CST) to assist you at (800) 462-5261.

CURRENT CUSTOMERS

2024 Enrollment

Current customers will receive a new catalog and a re-enrollment packet that contains a list of programs that the lab was enrolled in the previous year. Review and edit selections where necessary and return forms for processing. You can expect to receive a confirmation letter and a customized shipping schedule via email once re-enrollment has been processed.

Changes to Active Enrollment or Account Information

To update contact or agency information, or add or drop PT enrollment at any time, please complete a [Customer Change Form](#) at wslhpt.org. Account changes require written documentation. You will receive an updated enrollment confirmation reflecting the requested changes.

SHIPPING INFORMATION

WSLH PT provides a customized shipping schedule with your enrollment confirmation. Customers with a valid email address under "Shipping Information" on the Enrollment Form will receive an email notification for each shipment. Most packages will arrive within 2 days of the scheduled ship date. Overnight shipments are designated on the shipping calendar. Your facility must make arrangements to accept delivery and have the package routed immediately to the appropriate location for proper handling and storage.

If you do not receive samples within 2 days of the scheduled ship date, please contact WSLH PT at (800) 462-5261. Please notify WSLH PT in advance of any address changes. Import permits or customs forms must be provided by international customers at least 30 calendar days prior to the first scheduled shipment.

CANCELLATION OF PRODUCTS

To cancel products, complete a [Customer Change Form](#) online at wslhpt.org. All cancellations must be submitted in writing at least 30 days prior to a scheduled shipment date. A credit will be applied to your account, if appropriate. The annual processing fee is non-refundable. Refund requests will be handled on a case-by-case basis by the accounts receivable department.

To assure participation in all shipments, enrollment and order forms must be received by December 1st. Contact us for sample availability after December 1st.

A NOTE FOR CAP ACCREDITED CUSTOMERS

We are accepted by the CAP Laboratory Accreditation Program (LAP) to fulfill PT requirements for most analytes and procedures. Analytes and procedures not accepted are indicated in this catalog with an asterisk (*) after the analyte name.

You can determine if enrollment in PT is required by reviewing the information on your CAP Laboratory Activity Menu report. You should carefully review this information before placing your order with us.



PT

PRIMARY PRODUCTS include one set of samples and reporting for one set of results per shipment unless otherwise specified. Analytes and procedures listed under the Regulated column are regulated under CLIA '88. Add-on products may only be ordered in conjunction with specific primary products.

QUALITY EVALUATION (QE) PRODUCTS include one set of samples and reporting for one set of results per shipment unless otherwise specified. These products can only be ordered in conjunction with a corresponding Primary product and may be ordered in multiples. Result sets reported for any QE products may be ordered for QA purposes, to test a secondary method, or for additional sample volume. Contact WSLH PT for QE products not listed.

ADDITIONAL PRODUCTS include Assayed Sample Sets, AUDIT MicroControls Calibration Verification / Linearity, evaluation sets, off-schedule proficiency testing, and online training and competency with continuing education credits.

PRODUCTS

NEW FOR 2024

PAGE	PRODUCT NAME
29	Hepatitis C - Waived Methods (YBC)
32	Syphilis Serology - Waived Methods (SSW)
50-51	Updates to SARS Products The analyte SARS-CoV-2 is now CLIA regulated. We have made some updates to our SARS products to accommodate this change. <ul style="list-style-type: none">• SARS-CoV-2 Antigen (CV) - New 5 sample product, CLIA regulated• SARS-CoV-2 Antigen - Waived Methods (CVW) - 3 sample product for waived methods• SARS/Viral Molecular (CM) - 5 sample product, CLIA regulated• SARS/Viral Molecular - Waived Methods (CMW) - 3 sample product for waived methods• SARS-CoV-2 Molecular Liquid (CLM) - New 5 sample product, CLIA regulated

CHEMISTRY

▲ Blood Gas / Oximetry

Blood Gases / Electrolytes / Metabolites (BG)

Item PT01050
QE Product Item PT01060

3mL aqueous samples compatible with most blood gas instruments including ABL, Cobas, EPOC, GEM, i-STAT, IRMA, OPTI, RAPIDLab, RAPIDPoint and OTHER systems.

	CLIA REGULATED		UNREGULATED	
ANALYTES	<ul style="list-style-type: none"> • Chloride • Creatinine • Glucose • pCO₂ • pH 	<ul style="list-style-type: none"> • pO₂ • Potassium • Sodium • Urea nitrogen (BUN) 	<ul style="list-style-type: none"> • Carbon dioxide, total • Ionized calcium • Ionized magnesium * • Lactate 	
2024 Ship Dates	March 4	June 24	October 28	Three shipments per year Five samples per shipment

* Analyte(s) not yet accepted by the CAP Laboratory Accreditation Program

Blood Gas Hemoglobin / Hematocrit (BGH), add-on to BG

Add-on to BG Item PT01570
QE Product Item PT01580

2.5mL aqueous samples. This product can only be ordered in conjunction with BG above. IL GEM and ABL90 FLEX users should report these analytes under the CO-Oximetry product on page 9.

	CLIA REGULATED		UNREGULATED	
ANALYTES	<ul style="list-style-type: none"> • Hematocrit 	<ul style="list-style-type: none"> • Hemoglobin 		
2024 Ship Dates	March 4	June 24	October 28	Three shipments per year Five samples per shipment

i-STAT Chemistries PLUS (BGB)

Item PT01345
QE Product Item PT01347

2.5mL BLUE aqueous samples intended for use on i-STAT systems. Includes Hemoglobin and Hematocrit. Single set of five samples.

	CLIA REGULATED		UNREGULATED	
ANALYTES	<ul style="list-style-type: none"> • Chloride • Creatinine • Glucose • Hematocrit • Hemoglobin • pCO₂ • pH 	<ul style="list-style-type: none"> • pO₂ • Potassium • Sodium • Urea nitrogen (BUN) 	<ul style="list-style-type: none"> • Carbon dioxide, total • Ionized calcium • Lactate 	
2024 Ship Dates	March 4	June 24	October 28	Three shipments per year Five samples per shipment

CHEMISTRY

▲ Blood Gas / Oximetry

CHEMISTRY - BG/OX

CO-Oximetry (CO)

2mL samples of stabilized hemoglobin solution.

Item PT01330

QE Product Item PT01340

	CLIA REGULATED	UNREGULATED
ANALYTES	<ul style="list-style-type: none"> • Hematocrit • Hemoglobin, total 	<ul style="list-style-type: none"> • Carboxyhemoglobin • Oxyhemoglobin • Methemoglobin

2024 Ship Dates	March 4	June 24	October 28	Three shipments per year Five samples per shipment
------------------------	---------	---------	------------	---

i-STAT Chemistries - Waived Methods (BGW)

2.5mL aqueous samples intended for waived i-STAT cartridges. Laboratories using non-waived methods should refer to BGB or BG products on prior page.

Item PT01400

QE Product Item PT01425

	CLIA REGULATED	UNREGULATED
ANALYTES		<ul style="list-style-type: none"> • Chloride • Creatinine • Glucose • Hematocrit • Hemoglobin • Potassium • Sodium • Urea nitrogen (BUN)

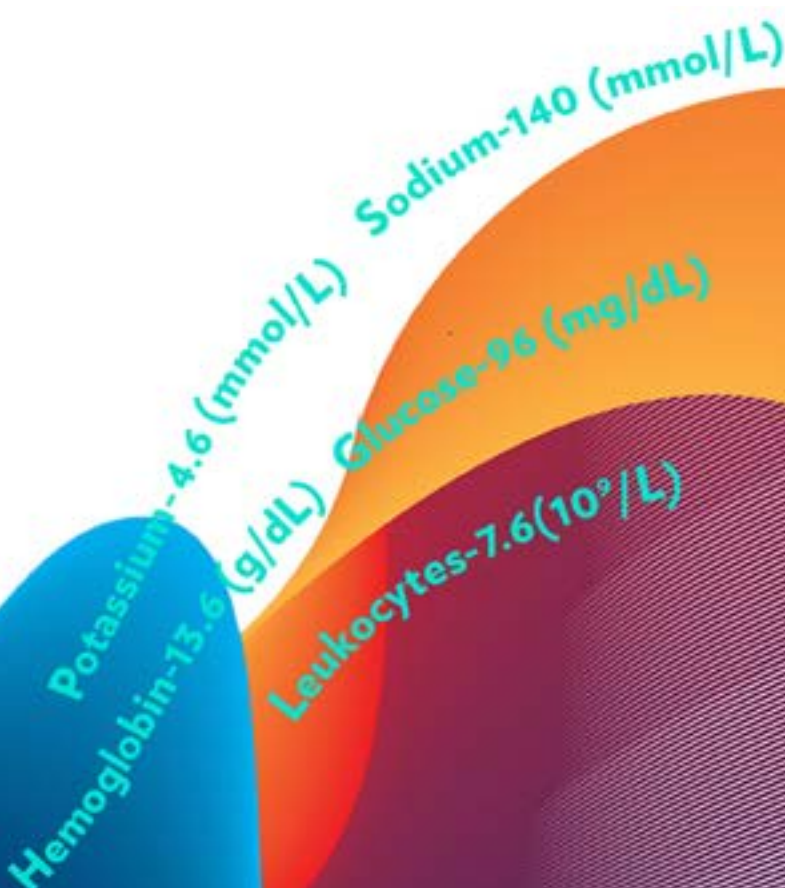
2024 Ship Dates	March 4	June 24	Two shipments per year Three samples per shipment
------------------------	---------	---------	--

LET YOUR DATA FLOW

WSLH PT's DATA UPLOAD

Automate quantitative data entry with PT Data Upload

Learn more at wslhpt.org



CHEMISTRY

▲ General

Alcohol/Ketones, serum (AM)

2mL liquid samples. Beta-hydroxybutyrate is compatible with instrumentation using Stanbio reagent as well as with POC meters such as Abbott Xceed Pro and Stanbio STAT-site M.

Item PT01000
QE Product Item PT01010

	CLIA REGULATED	UNREGULATED
ANALYTES	<ul style="list-style-type: none"> • Alcohol (ethanol) 	<ul style="list-style-type: none"> • Acetone (qualitative) • Acetone (semi-quantitative) • Beta-hydroxybutyrate

2024 Ship Dates February 19 June 17 September 30 Three shipments per year
Five samples per shipment

Ammonia (NH)

2mL liquid samples.

Item PT01020
QE Product Item PT01045

	CLIA REGULATED	UNREGULATED
ANALYTES		<ul style="list-style-type: none"> • Ammonia

2024 Ship Dates March 18 August 26 Two shipments per year
Three samples per shipment

Bilirubin - Elevated (NB)

1mL liquid samples containing elevated levels of bilirubin similar to those found in neonates and liver disease.

Item PT01430
QE Product Item PT01440

	CLIA REGULATED	UNREGULATED
ANALYTES	<ul style="list-style-type: none"> • Bilirubin, total 	<ul style="list-style-type: none"> • Bilirubin, direct

2024 Ship Dates February 19 June 17 September 30 Three shipments per year
Five samples per shipment

NOTE: For laboratories reporting Total Bilirubin with NB and CET, the CET Bilirubin score will be reported to accreditation agencies.

Blood Lead - 5 Samples (PB)

1mL whole blood samples.

Item PT01080
QE Product Item PT01085

CLIA REGULATED		UNREGULATED	
ANALYTES	• Blood lead		
2024 Ship Dates	February 19	June 17	September 30
			Three shipments per year Five samples per shipment

Blood Lead - 3 Samples (BL)

1mL whole blood samples.

Item PT01070
QE Product Item PT01077

CLIA REGULATED		UNREGULATED	
ANALYTES		• Blood lead	
2024 Ship Dates	February 19	September 30	
			Two shipments per year Three samples per shipment

Body Fluid Chemistry (PC)

3mL liquid samples intended to simulate pleural, peritoneal, and miscellaneous body fluids.

Item PT01120
QE Product Item PT01145

NOTE: For spinal fluid, see SF product on page 16. For urine, see CU on page 17.

CLIA REGULATED		UNREGULATED	
ANALYTES		<ul style="list-style-type: none"> • Albumin • Amylase • Cholesterol • Creatinine • Glucose 	<ul style="list-style-type: none"> • LDH • pH (quantitative) • Protein • Triglycerides
2024 Ship Dates	March 18	August 26	
			Two shipments per year Three samples per shipment

Body Fluid pH - Visual (PH)

0.5mL liquid samples intended for pH measurement by color comparison methods including amniotic and miscellaneous body fluid pH measurement. Samples are compatible with non-nitrazine and nitrazine test strips, swabs, and paper.

Item PT01150
QE Product Item PT01175

NOTE: For urine pH, see UR product on page 54.

For Amniotic Fluid Detection by protein methods, see AE product on page 52.

CLIA REGULATED		UNREGULATED	
ANALYTES		<ul style="list-style-type: none"> • pH (color comparison) • pH interpretation (ruptured, not ruptured) 	
2024 Ship Dates	March 18	August 26	
			Two shipments per year Three samples per shipment

CHEMISTRY

▲ General

Cardiac Markers - 5 Samples (IE)

1.5mL liquid samples. Compatible with automated methods such as Abbott i-STAT, Triage, Architect, Beckman Coulter, Roche, Siemens, and Vitros.

	CLIA REGULATED	UNREGULATED	
ANALYTES	<ul style="list-style-type: none"> • CK-MB • CK, total 	<ul style="list-style-type: none"> • BNP • D-dimer (Triage only) • hs-CRP • Myoglobin • NT-proBNP 	<ul style="list-style-type: none"> • Troponin I • Troponin I, high sensitivity • Troponin T • Troponin T, high sensitivity
2024 Ship Dates	February 19 June 17	September 30	Three shipments per year Five samples per shipment

Item PT01260
QE Product Item PT01270

NOTE: For CRP methods screening for non-specific inflammatory disease, see XP product on page 28.

D-dimer in this module is for laboratories using the Triage. Other instrumentation, see DD product on page 19.

For laboratories reporting CK total with IE and CET, the CET CK total score will be transmitted to accreditation agencies.

CAP accredited labs must test five samples for non-waived methods except for D-dimer, Myoglobin, and hs-CRP.

Cardiac Markers - 3 Samples (TM)

1.5mL liquid samples. Compatible with automated methods such as Abbott i-STAT, Triage, Architect, Beckman Coulter, Roche, Siemens, and Vitros.

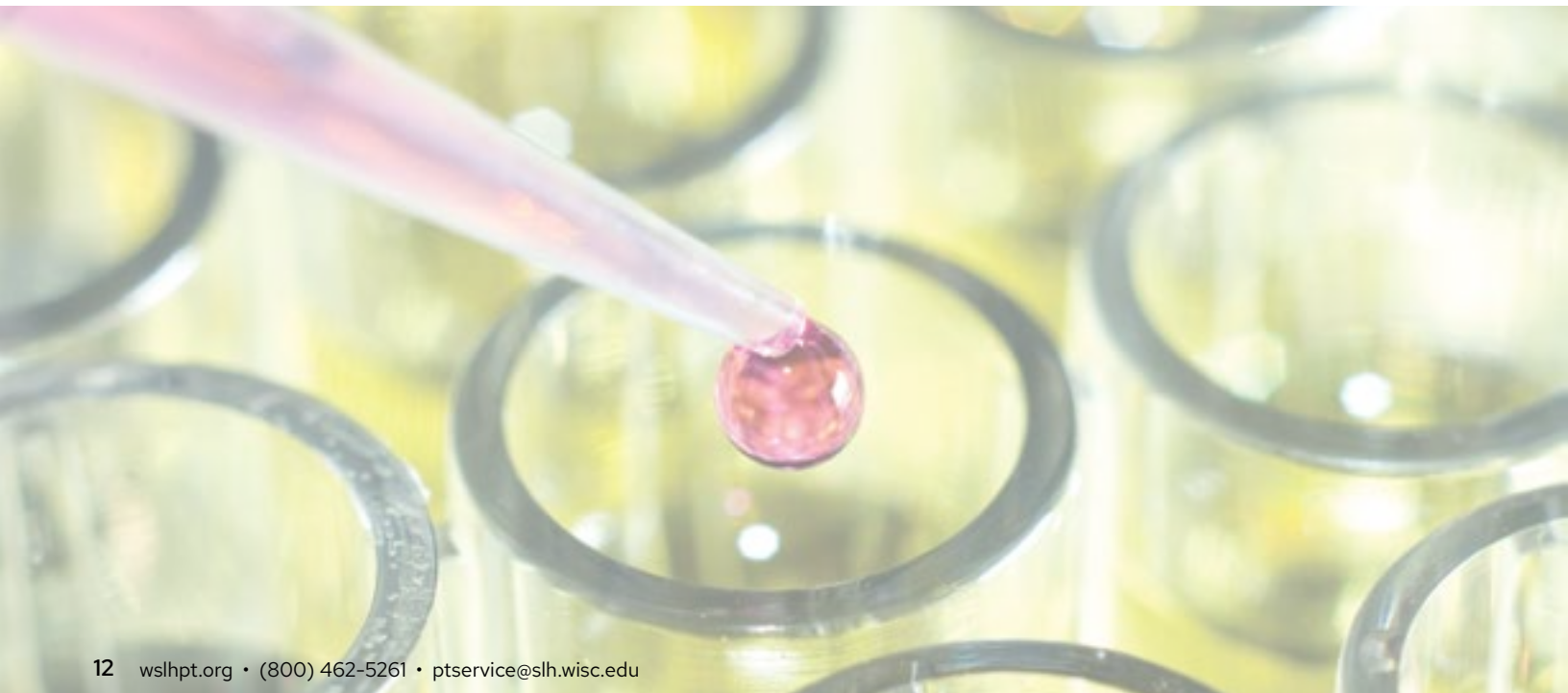
	CLIA REGULATED	UNREGULATED	
ANALYTES		<ul style="list-style-type: none"> • BNP • D-dimer (Triage only) • hs-CRP • Myoglobin • NT-proBNP 	<ul style="list-style-type: none"> • Troponin I • Troponin I, high sensitivity • Troponin T • Troponin T, high sensitivity
2024 Ship Dates	February 19 September 30		Two shipments per year Three samples per shipment

Item PT01230
QE Product Item PT01255

NOTE: For CRP methods screening for non-specific inflammatory disease, see XP product on page 28.

D-dimer in this module is for laboratories using the Triage. Other instrumentation, see DD product on page 19.

CAP accredited labs must test five samples for non-waived methods except for D-dimer, Myoglobin, and hs-CRP.



Chemistry/Endocrinology/Therapeutic Drugs (CET)

5mL liquid samples.

Order by number of analytes reported

- 1-11 - Item PT01310
- 12-21 - Item PT01314
- 22-30 - Item PT01318
- 31+ - Item PT01322
- QE Product Item PT01326

NOTE: i-STAT users may enroll in CET for hCG quantitative. For i-STAT chemistry analytes, see BG, BGB, or BGW products on page 8, 9.

	CLIA REGULATED	UNREGULATED	
ANALYTES	<ul style="list-style-type: none"> • ALT • Albumin • ALKP • Alpha-fetoprotein • Amylase • AST • Bilirubin, total • Calcium, total • Carbamazepine • Chloride • Cholesterol, HDL • Cholesterol, total • Cortisol • Creatine Kinase (CK) • Creatinine • Digoxin • Gentamicin • Glucose • hCG, quantitative (serum) • Iron, total • LDH 	<ul style="list-style-type: none"> • Lithium • Magnesium • Phenobarbital • Phenytoin (Dilantin) • Potassium • Protein, total • Sodium • Theophylline • TSH • T3, total • T4, free (FT4) • T4, total • T-Uptake • Tobramycin • Triglycerides • Urea nitrogen (BUN) • Uric acid • Valproic acid 	<ul style="list-style-type: none"> • Acetaminophen • Amikacin * • Bilirubin, direct • CO₂ • Cholesterol, LDL (calculated) • Cholesterol, LDL (measured) • GGT • Lactate • Lipase • Osmolality • Phosphorus • Salicylate • T3, free (FT3) • TIBC, calculated • TIBC, measured • UIBC * • Vancomycin

* Analyte(s) not yet accepted by the CAP Laboratory Accreditation Program

2024 Ship Dates	February 19	June 17	September 30	Three shipments per year Five samples per shipment
------------------------	-------------	---------	--------------	---

hCG, serum - Qualitative (HCG)

1mL liquid samples.

Item PT01480
Add-on to any CET Product Item PT01495
QE Product Item PT01490

	CLIA REGULATED	UNREGULATED
ANALYTES	<ul style="list-style-type: none"> • hCG, qualitative (serum) 	

NOTE: For laboratories reporting both hCG quantitative and hCG qualitative, only the hCG quantitative score will be transmitted to accreditation agencies.

2024 Ship Dates	February 19	June 17	September 30	Three shipments per year Five samples per shipment
------------------------	-------------	---------	--------------	---

CHEMISTRY

▲ General

Chemistry - Waived Methods (WC)

5mL liquid samples intended for instruments using waived cartridges such as CardioChek (reflectance test strips only), Cholestech LDX, Roche Accutrend, and Abaxis Piccolo (waived). Laboratories using Abaxis Piccolo non-waived cartridges should refer to the CET product on the previous page.

ANALYTES	CLIA REGULATED	UNREGULATED
		<ul style="list-style-type: none"> • ALT • Albumin • ALKP • Amylase • AST • Bilirubin, total • Calcium, total • CO₂ • Chloride • Cholesterol, HDL • Cholesterol, LDL (calculated) • Cholesterol, total
		<ul style="list-style-type: none"> • Creatine Kinase (CK) • Creatinine • GGT • Glucose • Phosphorus • Potassium • Protein, total • Sodium • Triglycerides • Urea nitrogen (BUN) • Uric acid

2024 Ship Dates February 19 September 30 Two shipments per year
Three samples per shipment

Item PT01282
QE Product Item PT01284

NOTE: For i-STAT chemistry waived cartridges, see BGW product on page 9.

For CardioChek eGLU (glucose electrochemical test strips), see WBG 3 sample product below.

Glucose Whole Blood - 5 Samples (WBG)

Whole blood samples intended for waived glucose meters.

Samples are compatible with blood glucose meters used for ancillary/point of care testing.

ANALYTES	CLIA REGULATED	UNREGULATED
		<ul style="list-style-type: none"> • Whole Blood Glucose

2024 Ship Dates April 1 October 14 Two shipments per year
Five samples per shipment

Item PT01886
QE Product Item PT01888
Additional Samples Item PT01890

NOTE: QE product allows reporting for up to 20 result sets.
Additional Samples product is samples only, no result reporting.

Glucose Whole Blood - 3 Samples (WBG)

Whole blood samples intended for waived glucose meters. Samples are compatible with blood glucose meters and instruments, including HemoCue glucose systems, used for ancillary/point of care testing.

ANALYTES	CLIA REGULATED	UNREGULATED
		<ul style="list-style-type: none"> • Whole Blood Glucose (meters) • Whole Blood Glucose (instruments) *

2024 Ship Dates April 1 October 14 Two shipments per year
Three samples per shipment

Item PT01880
QE Product Item PT01895
Additional Samples Item PT01884

NOTE: QE product allows reporting for up to 20 result sets.
Additional Samples product is samples only, no result reporting.
Product available in POC Package -see page 55.

* Analyte(s) not yet accepted by the CAP Laboratory Accreditation Program. This applies only to instruments that test glucose using whole blood (i.e. HemoCue glucose systems and CardioChek eGLU test strip). This does not apply to glucose meters.

Hemoglobin A1c (Glycohemoglobin) - 5 Samples (GHR)

1mL whole blood samples. These samples are NOT compatible with the Afinion analyzer. See GHA product below.

	CLIA REGULATED	UNREGULATED
ANALYTES		• Hemoglobin A1c

2024 Ship Dates February 19 June 17 September 30 Three shipments per year
Five samples per shipment

Item PT01524
QE Product Item PT01529

CAP accredited labs using a non-waived method must test five samples for glycohemoglobin.

Hemoglobin A1c (Glycohemoglobin) - 3 Samples (GH)

1mL whole blood samples. These samples are NOT compatible with the Afinion analyzer. See GHA product below.

	CLIA REGULATED	UNREGULATED
ANALYTES		• Hemoglobin A1c

2024 Ship Dates March 18 August 26 Two shipments per year
Three samples per shipment

Item PT01500
QE Product Item PT01522

CAP accredited labs using a non-waived method must test five samples for glycohemoglobin.

Hemoglobin A1c (Glycohemoglobin) - Afinion (GHA)

0.5mL whole blood samples intended for use with the Afinion analyzer.

	CLIA REGULATED	UNREGULATED
ANALYTES		• Hemoglobin A1c

2024 Ship Dates March 18 August 26 Two shipments per year
Three samples per shipment

Item PT01530
QE Product Item PT01555

Immunoassay Chemistry (CS)

5mL liquid samples.

	CLIA REGULATED	UNREGULATED
ANALYTES		<ul style="list-style-type: none"> • CEA • DHEA Sulfate * • Estradiol • Ferritin • Folate • FSH • Homocysteine * • LH
		<ul style="list-style-type: none"> • Prealbumin • Progesterone • Prolactin • PSA, total • Testosterone, total • Transferrin • Vitamin B12

2024 Ship Dates March 18 August 26 Two shipments per year
Three samples per shipment

Order by number of analytes reported

1-5 - Item PT01680
QE Product 1-5 - Item PT01692
6+ - Item PT01695
QE Product 6+ - Item PT01707

* Analyte(s) not yet accepted by the CAP Laboratory Accreditation Program

CHEMISTRY

▲ General

Immunoassay Chemistry B (CSB)

Lyophilized serum samples. A 2.0mL class A volumetric pipette and reagent-grade water are recommended for reconstitution.

Item PT01710
QE Product Item PT01715

	CLIA REGULATED	UNREGULATED
ANALYTES		<ul style="list-style-type: none"> • 25-OH Vitamin D, total • C-peptide * • Insulin * • PTH, intact

* Analyte(s) not yet accepted by the CAP Laboratory Accreditation Program

2024 Ship Dates March 18 August 26 Two shipments per year
Three samples per shipment

Procalcitonin (PCT)

Lyophilized serum samples. A 2.0mL class A volumetric pipette and reagent-grade water are recommended for reconstitution.

Item PT01900
QE Product Item PT01905

	CLIA REGULATED	UNREGULATED
ANALYTES		<ul style="list-style-type: none"> • Procalcitonin

2024 Ship Dates March 18 August 26 Two shipments per year
Three samples per shipment

SHBG and Testosterone (SHBG)

Lyophilized serum samples. A 2.0mL class A volumetric pipette and reagent-grade water are recommended for reconstitution.

Item PT01970

	CLIA REGULATED	UNREGULATED
ANALYTES		<ul style="list-style-type: none"> • Sex hormone- binding globulin * • Testosterone, bioavailable • Testosterone, total * • Testosterone, free

* Analyte(s) not yet accepted by the CAP Laboratory Accreditation Program

2024 Ship Dates March 18 August 26 Two shipments per year
Three samples per shipment

Spinal Fluid Chemistry (SF)

2mL liquid samples.

Item PT01720
Add-on to PC Product Item PT01722
QE Product Item PT01745

	CLIA REGULATED	UNREGULATED
ANALYTES		<ul style="list-style-type: none"> • Chloride • Glucose • Lactic acid • LDH * • Potassium * • Protein • Sodium *

* Analyte(s) not yet accepted by the CAP Laboratory Accreditation Program

2024 Ship Dates March 18 August 26 Two shipments per year
Three samples per shipment

Tumor Markers (MT)

2mL liquid samples.

	CLIA REGULATED	UNREGULATED
ANALYTES		<ul style="list-style-type: none"> • Beta-2 Microglobulin * • CA 125 • CA 15-3 *

NOTE: CEA and PSA, total are available under the Immunoassay Chemistry (CS) product on page 15.

* Analyte(s) not yet accepted by the CAP Laboratory Accreditation Program

2024 Ship Dates March 18 August 26 Two shipments per year
Three samples per shipment

Urine Chemistry (CU)

10mL liquid samples. These samples are NOT compatible with the Afinion analyzer. See ACR product below.

	CLIA REGULATED	UNREGULATED
ANALYTES		<ul style="list-style-type: none"> • A/C ratio, quantitative • A/C ratio, semi-quantitative • Amylase • Calcium • Chloride • Creatinine, quantitative • Creatinine, semi-quantitative * • Glucose • Magnesium

Order by number of analytes reported

- 1-3 - Item PT01780
- QE Product 1-3 - Item PT01785
- 4-10 - Item PT01786
- QE Product 4-10 - Item PT01791
- 11+ - Item PT01792
- QE Product 11+ - Item PT01797

* Analyte(s) not yet accepted by the CAP Laboratory Accreditation Program

2024 Ship Dates March 18 August 26 Two shipments per year
Three samples per shipment

Urine Chemistry - Afinion (ACR)

3mL liquid samples intended for use with the Afinion analyzer.

	CLIA REGULATED	UNREGULATED
ANALYTES		<ul style="list-style-type: none"> • A/C ratio • Creatinine *

Item PT01960

* Analyte(s) not yet accepted by the CAP Laboratory Accreditation Program

2024 Ship Dates March 18 August 26 Two shipments per year
Three samples per shipment

CHEMISTRY

▲ General

Urine Drug Adulteration Test (UDA)

Item PT01950
QE Product Item PT01955

10mL liquid samples for use with urine adulterant detection methods.

	CLIA REGULATED	UNREGULATED
ANALYTES		<ul style="list-style-type: none"> • Creatinine • Nitrites • Oxidants
		<ul style="list-style-type: none"> • pH • Specific gravity

2024 Ship Dates February 19 June 17 September 30 Three shipments per year
Two samples per shipment

Urine Drug Screen (UD)

Item PT01810
QE Product Item PT01835

10mL liquid samples intended for the qualitative detection of drugs using urine immunoassay screening procedures.

	CLIA REGULATED	UNREGULATED
ANALYTES		<ul style="list-style-type: none"> • Acetaminophen • 6-AM (6-Acetylmorphine) • Amphetamines • Barbiturates • Benzodiazepines • Buprenorphine • Cannabinoids (THC) • Carisoprodol * • Cocaine metabolites • Cotinine • EDDP • Ethanol (Alcohol) • Fentanyl
		<ul style="list-style-type: none"> • Hydrocodone * • MDMA (Ecstasy) • Meperidine * • Methadone • Methamphetamines • Methaqualone • Opiates • Oxycodone • Phencyclidine (PCP) • Propoxyphene • Tramadol * • Tricyclic antidepressants • Zolpidem *

2024 Ship Dates February 19 June 17 September 30 Three shipments per year
Two samples per shipment

* Laboratories accredited by CAP contact WSLH PT about acceptance for these analytes.

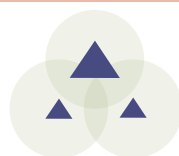
Urine Drug Screen - Ethyl Glucuronide (ETG)

Item PT01980

5mL liquid samples intended for the qualitative detection of EtG in urine.

	CLIA REGULATED	UNREGULATED
ANALYTES		• Ethyl Glucuronide (EtG)

2024 Ship Dates February 19 June 17 September 30 Three shipments per year
Two samples per shipment



COAGULATION

Activated Clotting Time (CT)

Item PT02030
QE Product Item PT02052

Lyophilized samples with paired diluents, calcium chloride solutions (activator), and method-differentiated handling instructions. Compatible with Hemochron, HemoTec, i-STAT, Medtronic HMS and OTHER methods.

	CLIA REGULATED	UNREGULATED
ANALYTES		<ul style="list-style-type: none"> Activated clotting time (ACT)

2024 Ship Dates	February 12	September 9	Two shipments per year Three samples per shipment
------------------------	-------------	-------------	--

Coagulation - Basic (CA)

Item PT02060
QE Product Item PT02070

Lyophilized plasma samples. Use of a 1.0mL class A volumetric pipette and reagent-grade water are recommended for reconstitution. NOT compatible with whole blood systems (i-STAT, ITC, CoaguChek, or Coag-Sense). INR Calculation "dry exercise" is available for CAP-accredited labs.

	CLIA REGULATED	UNREGULATED
ANALYTES	<ul style="list-style-type: none"> Activated partial thromboplastin time (APTT) Protime (PT) Fibrinogen 	<ul style="list-style-type: none"> INR

2024 Ship Dates	February 12	June 3	September 9	Three shipments per year Five samples per shipment
------------------------	-------------	--------	-------------	---

D-dimer (DD)

Item PT02080
QE Product Item PT02105

1.0mL liquid samples. Compatible with most D-dimer kits including Sysmex CA and CS, Triage, Stago, and OTHER methods. Educational D-dimer interpretation available.

	CLIA REGULATED	UNREGULATED
ANALYTES		<ul style="list-style-type: none"> D-dimer, quantitative

2024 Ship Dates	February 12	September 9	Two shipments per year Three samples per shipment
------------------------	-------------	-------------	--

NOTE: Customers using Triage for cardiac markers, see IE or TM product on page 12.

COAGULATION

COAGULATION

Protime / INR - Whole Blood CoaguChek XS (PXS)

Lyophilized samples intended for non-waived Roche CoaguChek XS systems. Also available to waived system users wanting more challenges per year. Waived system users reporting only INR may consider CXSW product.

Item PT02350
QE Product Item PT02360

ANALYTES	CLIA REGULATED	UNREGULATED
	• Protime (PT)	• INR

2024 Ship Dates	February 12	June 3	September 9	Three shipments per year Five samples per shipment
------------------------	-------------	--------	-------------	---

INR - CoaguChek - Waived Methods (CXSW)

Lyophilized samples for CoaguChek XS or CoaguChek XS Plus (waived use).

Item PT02320
QE Product Item PT02345

ANALYTES	CLIA REGULATED	UNREGULATED

2024 Ship Dates	February 12	September 9	Two shipments per year Three samples per shipment
------------------------	-------------	-------------	--

Protime / INR - Whole Blood, i-STAT and Coag-Sense (PRC)

Lyophilized samples intended for i-STAT systems; most i-STAT users must report both Protime and INR for proficiency testing purposes. Also compatible with Coag-Sense systems where non-waived users must report both Protime and INR. Coag-Sense waived system users reporting only INR may consider CW product.

Item PT02370
QE Product Item PT02380

ANALYTES	CLIA REGULATED	UNREGULATED
	• Protime (PT)	• INR

2024 Ship Dates	February 12	June 3	September 9	Three shipments per year Five samples per shipment
------------------------	-------------	--------	-------------	---

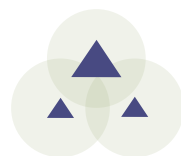
INR - Coag-Sense - Waived Methods (CW)

Lyophilized samples intended for Coag-Sense (waived use).

Item PT02310
QE Product Item PT02315

ANALYTES	CLIA REGULATED	UNREGULATED

2024 Ship Dates	February 12	September 9	Two shipments per year Three samples per shipment
------------------------	-------------	-------------	--



HEMATOLOGY

Hematology samples are instrument-specific.

Please use the table below to choose the correct sample/instrument combination.

INSTRUMENTS

	CBC OR CBC WITH AUTO DIFF								RETICULOCYTES		
	AF1	AF2	AF3	AF4	AF5	AF6	AS	AT	RT	RTB	RTS
Abbott CELL-DYN 1400, 1600, 1700, 1800, Emerald (Emerald 22 order AF1 - see below)								X			
Abbott CELL-DYN 3000, 3200, 3500, 3700, 4000, Ruby, Emerald 22	X										
Abbott Sapphire	X								X		
Abacus 5	X										
ABX Micros 60 and ES 60								X			
ABX Pentra 60, 80, 120, H550		X									
ABX Pentra XLR									X		
Beckman Coulter AcT 5 diff		X									
Beckman Coulter AcT 8/10, AcT diff/diff2								X			
Beckman Coulter DxH 500 (Includes 520, 560)			X								
Beckman Coulter DxH600, DxH690T, DxH800, DxH900, HmX, LH 500, LH700 series, MAXM				X						X	
Drew Scientific D3								X			
Manual Reticulocyte methods									X		
Medonic M series, Medonic CA-620								X			
Siemens ADVIA 120/2120										X	
Siemens ADVIA 560	X										
Sight OLO						X					
Sysmex XS1000i					X						
Sysmex XE series, XT series, XN series, XN-L series					X						X
Sysmex KX-21N, pocH 100i, XP-300							X				

HEMATOLOGY

Hematology - Comprehensive (AF)

Whole blood samples for automated instruments with 5-6 part differential.

	CLIA REGULATED	UNREGULATED
ANALYTES	<ul style="list-style-type: none"> Erythrocyte count (RBC) Hematocrit Hemoglobin 	<ul style="list-style-type: none"> Leukocyte count (WBC) Platelet count WBC differential, automated

- AF1 Item PT02230
- QE Product AF1 Item PT02240
- AF2 Item PT02250
- QE Product AF2 Item PT02260
- AF3 Item PT02270
- QE Product AF3 Item PT02280
- AF4 Item PT02285
- QE Product AF4 Item PT02286
- AF5 Item PT02290
- QE Product AF5 Item PT02300
- AF6 Item PT02295
- QE Product AF6 Item PT02296

NOTE: Item numbers are instrument-specific.
See instrument table on page 21.

2024 Ship Dates	February 12	June 3	September 9	Three shipments per year Five samples per shipment
------------------------	-------------	--------	-------------	---

Hematology - Limited Sysmex (AS)

Whole blood samples for Sysmex instruments with 2-3 part differential.

	CLIA REGULATED	UNREGULATED
ANALYTES	<ul style="list-style-type: none"> Erythrocyte count (RBC) Hematocrit Hemoglobin 	<ul style="list-style-type: none"> Leukocyte count (WBC) Platelet count WBC differential, automated

- Item PT02200
- QE Product Item PT02210

NOTE: See instrument table on page 21.

2024 Ship Dates	February 12	June 3	September 9	Three shipments per year Five samples per shipment
------------------------	-------------	--------	-------------	---

Hematology - Limited (AT)

Whole blood samples for automated instruments with 2-3 part differential or no differential.

	CLIA REGULATED	UNREGULATED
ANALYTES	<ul style="list-style-type: none"> Erythrocyte count (RBC) Hematocrit Hemoglobin 	<ul style="list-style-type: none"> Leukocyte count (WBC) Platelet count WBC differential, automated

- Item PT02190
- QE Product Item PT02195

NOTE: See instrument table on page 21.

2024 Ship Dates	February 12	June 3	September 9	Three shipments per year Five samples per shipment
------------------------	-------------	--------	-------------	---

Hematology - Cell Identification (XI)

Seven images (paper and online versions).

ANALYTES	CLIA REGULATED	UNREGULATED
	• Cell identification	• Cell identification, educational

2024 Ship Dates	February 12	June 3	September 9	Three shipments per year Five regulated and two educational challenges per shipment
------------------------	-------------	--------	-------------	--

Item PT02220

NOTE: For laboratories reporting both automated differential and cell identification, only the automated differential score will be transmitted to accreditation agencies.

Reticulocytes - Manual and Some Automated (RT)

Whole blood samples for manual methods and some automated instruments.

ANALYTES	CLIA REGULATED	UNREGULATED
		• Reticulocyte count, percent

2024 Ship Dates	February 12	September 9	Two shipments per year Three samples per shipment
------------------------	-------------	-------------	--

Item PT02420

QE Product Item PT02425

NOTE: See instrument table on page 21.

Reticulocytes - Beckman Coulter (RTB)

Whole blood samples for Beckman Coulter instruments.

ANALYTES	CLIA REGULATED	UNREGULATED
		• IRF • Reticulocyte count, absolute • Reticulocyte count, percent

2024 Ship Dates	February 12	September 9	Two shipments per year Three samples per shipment
------------------------	-------------	-------------	--

Item PT02442

QE Product Item PT02444

NOTE: See instrument table on page 21.

Reticulocytes - Sysmex (RTS)

Whole blood samples for Sysmex instruments.

ANALYTES	CLIA REGULATED	UNREGULATED
		• IRF • Reticulocyte count, absolute • Reticulocyte count, percent • Re-He

2024 Ship Dates	February 12	September 9	Two shipments per year Three samples per shipment
------------------------	-------------	-------------	--

Item PT02432

QE Product Item PT02434

NOTE: See instrument table on page 21.

HEMATOLOGY

Erythrocyte Sedimentation Rate (ESR) Instruments

ESR samples are instrument specific. Please use the table below to choose the correct sample/instrument combination.

INSTRUMENTS	SR	SRI	SRA
		X	
			X
	X		

Sedimentation Rate (SR)

Whole blood samples intended for manual and automated erythrocyte sedimentation rate methods.

Item PT02450
QE Product Item PT02465

NOTE: See instrument table above.

ANALYTES	CLIA REGULATED	UNREGULATED

2024 Ship Dates	April 1	October 14	Two shipments per year Three samples per shipment
------------------------	---------	------------	--

Sedimentation Rate - iSED and Alifax (SRI)

Whole blood samples intended for the iSED, miniiSED, and Alifax.

Item PT02520
QE Product Item PT02525

NOTE: See instrument table above.

ANALYTES	CLIA REGULATED	UNREGULATED

2024 Ship Dates	April 1	October 14	Two shipments per year Three samples per shipment
------------------------	---------	------------	--

Sedimentation Rate - Polymedco Sedimat 15 and ESR Stat Plus (SRA)

Whole blood samples intended for Polymedco Sedimat 15, ESR Stat-6, and ESR Stat Plus instruments.

Item PT02470
QE Product Item PT02485

NOTE: See instrument table above.

ANALYTES	CLIA REGULATED	UNREGULATED

2024 Ship Dates	April 1	October 14	Two shipments per year Three samples per shipment
------------------------	---------	------------	--

HEMATOLOGY

Fetal Red Cell Detection (HBF)

Item PT04350

1mL whole blood samples intended for fetal maternal hemorrhage detection methods. Compatible with fetal rosette screen (qualitative) and Kleihauer-Betke stain (quantitative).

CLIA REGULATED	UNREGULATED
ANALYTES	<ul style="list-style-type: none">• Fetal Screen (qualitative) *• Hemoglobin F (quantitative) *

* Analyte(s) not yet accepted by the CAP Laboratory Accreditation Program

2024 Ship Dates April 22 October 28 Two shipments per year
Three samples per shipment

Hematocrit - Waived Methods (HW)

Item PT02150

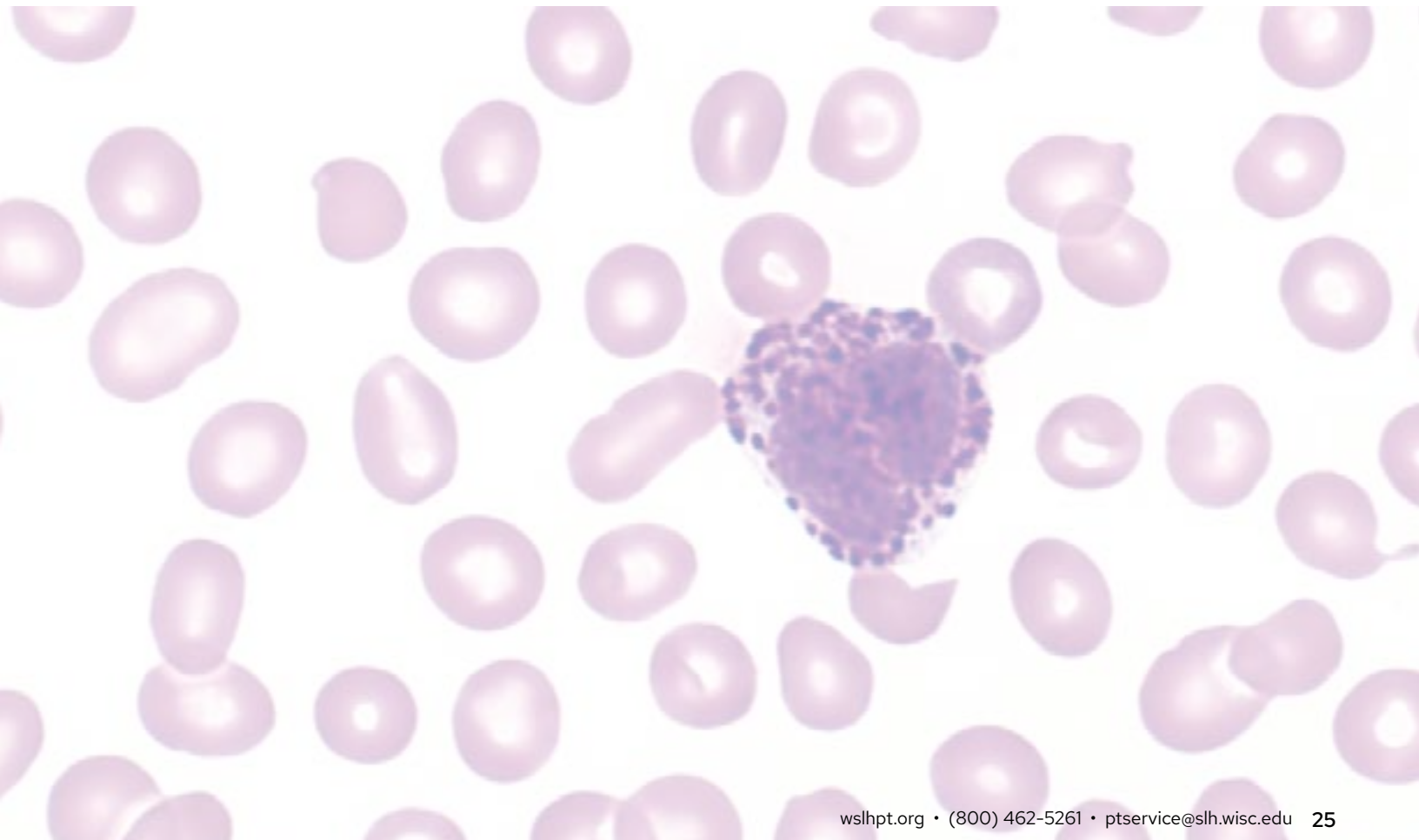
QE Product Item PT02175

Liquid whole blood samples intended for use with waived hematocrit methods.

CLIA REGULATED	UNREGULATED
ANALYTES	<ul style="list-style-type: none">• Hematocrit

Product available in POC Package -see page 55.

2024 Ship Dates April 1 October 14 Two shipments per year
Three samples per shipment



HEMATOLOGY

Hemoglobin - Waived Methods (HWG)

1mL liquid samples intended for use with waived hemoglobin systems. Compatible with HemoCue Hb 201, HemoPoint H2, and other waived hemoglobin systems. Samples are NOT compatible with HemoCue Hb 301 and HemoCue Hb 801. See HWH product below.

Item PT01450
QE Product Item PT01475
Product available in POC Package -see page 55.

ANALYTES	CLIA REGULATED	UNREGULATED
		• Hemoglobin

2024 Ship Dates April 1 October 14 Two shipments per year
Three samples per shipment

Hemoglobin - HemoCue Hb 301 and Hb 801 - Waived (HWH)

1mL liquid samples intended for use with HemoCue Hb 301 and HemoCue Hb 801.

Item PT01455
QE Product Item PT01465
Product available in POC Package -see page 55.

ANALYTES	CLIA REGULATED	UNREGULATED
		• Hemoglobin *

2024 Ship Dates April 1 October 14 Two shipments per year
Three samples per shipment

* Analyte(s) not yet accepted by the CAP Laboratory Accreditation Program

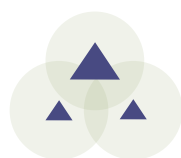
Sickle Cell Screen (SK)

Stabilized RBC samples compatible with solubility and electrophoresis methods.

Item PT02490
QE Product Item PT02515

ANALYTES	CLIA REGULATED	UNREGULATED
		• Sickle cell screen

2024 Ship Dates April 1 October 14 Two shipments per year
Three samples per shipment



IMMUNOHEMATOLOGY

▲ Blood Bank

Blood Bank - Comprehensive (AB)

Five bar-coded 4mL whole blood samples and one 2mL whole blood donor sample for compatibility testing. Intended for use with manual and automated methods.

Item PT04120
QE Product Item PT04130

NOTE: Samples are NOT compatible with Olympus PK7200/7300 instruments.

	CLIA REGULATED	UNREGULATED
ANALYTES	<ul style="list-style-type: none"> • ABO group • Rh (D) typing • Unexpected antibody detection 	<ul style="list-style-type: none"> • Compatibility testing • Antibody identification

2024 Ship Dates February 26 June 10 October 7 Three shipments per year
Five samples per shipment

Blood Bank - Limited (AB)

Five bar-coded 4mL whole blood samples. Intended for use with manual and automated methods.

Item PT04140
QE Product Item PT04150

NOTE: Samples are NOT compatible with Olympus PK7200/7300 instruments.

	CLIA REGULATED	UNREGULATED
ANALYTES	<ul style="list-style-type: none"> • ABO group 	<ul style="list-style-type: none"> • Rh (D) typing

2024 Ship Dates February 26 June 10 October 7 Three shipments per year
Five samples per shipment

Direct Antiglobulin Test (DAT)

Three bar-coded 2mL whole blood samples for Direct Antiglobulin Testing. Intended for use with manual and automated methods.

Item PT04145

NOTE: Samples are NOT compatible with Olympus PK7200/7300 instruments.

	CLIA REGULATED	UNREGULATED
ANALYTES		<ul style="list-style-type: none"> • DAT

2024 Ship Dates February 26 October 7 Two shipments per year
Three samples per shipment



IMMUNOLOGY

ANA Immunoserology (XN)

Item PT04000

0.6mL liquid samples compatible with EIA, IFA, and multiplex methods. Educational titer and pattern reporting available. Samples are NOT compatible with latex agglutination methods.

CLIA REGULATED		UNREGULATED	
ANALYTES	• Antinuclear antibody, qualitative		
2024 Ship Dates	January 22 May 13	September 3	Three shipments per year Five samples per shipment

ASO Immunoserology (XS)

Item PT04070

1mL liquid samples.

CLIA REGULATED		UNREGULATED	
ANALYTES	• Antistreptolysin O (ASO), qualitative	• Antistreptolysin O (ASO), quantitative *	
2024 Ship Dates	January 22 May 13	September 3	Three shipments per year Five samples per shipment

* Analyte(s) not yet accepted by the CAP Laboratory Accreditation Program

CRP Immunoserology (XP)

Item PT04160

QE Product Item PT04185

1mL liquid samples intended for methods screening for non-specific inflammatory disease.

CLIA REGULATED		UNREGULATED	
ANALYTES		• C-reactive protein, qualitative *	• C-reactive protein, quantitative
2024 Ship Dates	January 22	September 3	Two shipments per year Three samples per shipment

NOTE: For high-sensitivity CRP methods, see Cardiac products on page 12.

* Analyte(s) not yet accepted by the CAP Laboratory Accreditation Program

Helicobacter pylori Serology (HL)

Item PT04010

0.5mL liquid samples.

CLIA REGULATED		UNREGULATED	
ANALYTES		• Helicobacter pylori (total antibody)	
2024 Ship Dates	January 22	September 3	Two shipments per year Three samples per shipment

NOTE: For stool Helicobacter pylori, see HPSA product on page 39. For Urease, see RUR product on page 40.

Hepatitis (YB)

Item PT04190
Add-on to HV Item PT04195

1.5mL liquid samples. Compatible with traditional hepatitis methods and OraQuick HCV Rapid Antibody Test.

	CLIA REGULATED	UNREGULATED
ANALYTES	<ul style="list-style-type: none"> • Anti-HBc, IgM • Anti-HBc (total antibody) • HBsAg 	<ul style="list-style-type: none"> • Anti-HAV, IgM • Anti-HBs • Anti-HCV

2024 Ship Dates January 22 May 13 September 3 Three shipments per year
Five samples per shipment

Hepatitis C - Waived Methods (YBC)

Item PT04192
QE Product Item PT04193

1mL liquid serum samples. Compatible with waived methods including OraQuick HCV Rapid Antibody Test.

	CLIA REGULATED	UNREGULATED
ANALYTES		<ul style="list-style-type: none"> • Anti-HCV

2024 Ship Dates January 22 September 3 Two shipments per year
Three samples per shipment

NEW!

HIV (HV)

Item PT04020
QE Product Item PT04030

1mL liquid samples. Compatible with rapid and traditional testing methods used to test for Anti-HIV-1, Anti-HIV-1/2, or HIV-1 p24 Antigen.

	CLIA REGULATED	UNREGULATED
ANALYTES	<ul style="list-style-type: none"> • Anti-HIV • Anti-HIV/p24 Antigen (not differentiated) 	<ul style="list-style-type: none"> • p24 Antigen

2024 Ship Dates January 22 May 13 September 3 Three shipments per year
Five samples per shipment

HIV - Waived Methods (HVW)

Item PT04040
QE Product Item PT04062

1mL liquid samples. Compatible with waived rapid kits used to test for Anti-HIV-1, Anti-HIV-1/2, or HIV-1 p24 Antigen.

	CLIA REGULATED	UNREGULATED
ANALYTES		<ul style="list-style-type: none"> • Anti-HIV • p24 Antigen

2024 Ship Dates January 22 September 3 Two shipments per year
Three samples per shipment

IMMUNOLOGY

Immunoproteins (IMP)

Item PT04290

1mL liquid samples.

	CLIA REGULATED	UNREGULATED
ANALYTES	<ul style="list-style-type: none"> • Alpha-1 Antitrypsin (AAT) • Complement C3 • Complement C4 	<ul style="list-style-type: none"> • IgA • IgE • IgG • IgM

2024 Ship Dates	January 22	May 13	September 3	Three shipments per year Five samples per shipment
------------------------	------------	--------	-------------	---

Infectious Disease Serology (MMV)

Item PT04320

0.5mL lyophilized serum samples.

	CLIA REGULATED	UNREGULATED
ANALYTES		<ul style="list-style-type: none"> • Measles IgG, qualitative* • Measles IgM, qualitative • Mumps IgG, qualitative • Mumps IgM, qualitative • Varicella Zoster IgG, qualitative* • Varicella Zoster IgM, qualitative

* Analyte(s) not yet accepted by the CAP Laboratory Accreditation Program

2024 Ship Dates	January 22	September 3	Two shipments per year Three samples per shipment
------------------------	------------	-------------	--

Lyme Disease Serology (LY)

Item PT04200

0.5mL liquid samples.

	CLIA REGULATED	UNREGULATED
ANALYTES		<ul style="list-style-type: none"> • Lyme Disease Antibody, IgG • Lyme Disease Antibody, IgM • Lyme Disease Antibody, Total

2024 Ship Dates	January 22	September 3	Two shipments per year Three samples per shipment
------------------------	------------	-------------	--

Mono Immunoserology (ZM)

Item PT04210

0.65mL liquid samples.

	CLIA REGULATED	UNREGULATED
ANALYTES	<ul style="list-style-type: none"> • Infectious mononucleosis 	

2024 Ship Dates	January 22	May 13	September 3	Three shipments per year Five samples per shipment
------------------------	------------	--------	-------------	---

Mono Immunoserology - Waived Methods (MW)

0.65mL liquid samples.

Item PT04220
QE Product Item PT04245

Product available in POC Package –see page 55.

CLIA REGULATED		UNREGULATED	
ANALYTES			• Infectious mononucleosis
2024 Ship Dates	January 22	September 3	Two shipments per year Three samples per shipment

Mycoplasma Antibody (MP)

Item PT04300

0.5mL liquid samples. Compatible with kits that detect antibody to Mycoplasma pneumoniae.

CLIA REGULATED		UNREGULATED	
ANALYTES			• Mycoplasma antibody
2024 Ship Dates	January 22	September 3	Two shipments per year Three samples per shipment

Rheumatoid Factor Immunoserology (ZR)

Item PT04250
Add-on to ZM Product Item PT04255

1mL liquid samples.

CLIA REGULATED		UNREGULATED		
ANALYTES	• Rheumatoid factor, qualitative		• Rheumatoid factor, quantitative • Rheumatoid factor, titer (educational)	
2024 Ship Dates	January 22	May 13	September 3	Three shipments per year Five samples per shipment

Rubella Immunoserology (XU)

Item PT04260

1mL liquid samples.

CLIA REGULATED		UNREGULATED		
ANALYTES	• Rubella, qualitative (IgG)		• Rubella, quantitative (IgG)	
2024 Ship Dates	January 22	May 13	September 3	Three shipments per year Five samples per shipment

Rubella IgM Immunoserology (XM)

Item PT04330

0.5mL lyophilized serum samples. For Quality Assurance only; does not meet CMS Rubella requirements.

CLIA REGULATED		UNREGULATED	
ANALYTES			• Rubella, qualitative (IgM)
2024 Ship Dates	January 22	September 3	Two shipments per year Three samples per shipment

IMMUNOLOGY

SARS-CoV-2 Serology (SCA)

Item PT04340
QE Product Item PT04345

1mL samples intended for antibody detection. Intended for methods that evaluate serum/plasma specimens.

	CLIA REGULATED	UNREGULATED
ANALYTES		<ul style="list-style-type: none"> • SARS-CoV-2 Total Antibody • SARS-CoV-2 IgG, nucleocapsid • SARS-CoV-2 IgG, spike/undifferentiated • SARS-CoV-2 IgM
2024 Ship Dates	January 22 September 3	Two shipments per year Three samples per shipment

Syphilis Serology (SS)

Item PT04270
QE Product Item PT04280

1mL liquid samples intended for the quantitative and qualitative evaluation of antibody to Treponema pallidum. Intended for methods that evaluate serum specimens (RPR, VDRL, FTA, MHA-TP, TP-PA, EIA/ CIA, multiplex flow immunoassay, and rapid kits).

	CLIA REGULATED	UNREGULATED
ANALYTES	<ul style="list-style-type: none"> • Syphilis Nontreponemal, qualitative • Syphilis Nontreponemal, quantitative • Syphilis Treponemal, qualitative 	
2024 Ship Dates	January 22 May 13 September 3	Three shipments per year Five samples per shipment

Syphilis Serology -Waived Methods (SSW)

Item PT04272
QE Product Item PT04273

1mL liquid serum samples intended for use with Syphilis Health Check (waived).

	CLIA REGULATED	UNREGULATED
ANALYTES		<ul style="list-style-type: none"> • Syphilis Treponemal, qualitative
2024 Ship Dates	January 22 September 3	Two shipments per year Three samples per shipment

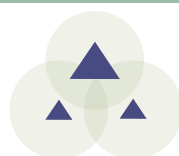
NEW!

Thyroid Antibodies (THY)

Item PT04310

0.5mL liquid samples.

	CLIA REGULATED	UNREGULATED
ANALYTES		<ul style="list-style-type: none"> • Thyroglobulin Antibody (Anti-TG), quantitative • Thyroid Peroxidase/Microsomal Antibody (Anti-TPO), quantitative
2024 Ship Dates	January 22 September 3	Two shipments per year Three samples per shipment



MICROBIOLOGY

Microbiology CLIA requirements:

CLIA regulations require five proficiency testing challenges per event for each Microbiology sub-specialty. The sub-specialties are Bacteriology, Mycobacteriology, Mycology, Parasitology and Virology. All non-waived tests in a sub-specialty can be combined to meet the five challenges per event requirement.

Microbiology challenges tested with waived methods cannot be included with non-waived methods to meet the five challenges per event requirement.

Multiplex Products:

We offer a variety of Multiplex products. See pages listed below for details.

- Blood Pathogen Multiplex (BPM) Page 36
- GI Multiplex (EP) Page 38
- Meningitis Multiplex (MEP) Page 40
- Pneumonia Multiplex (PNM) Page 41
- Respiratory Multiplex (RP) Page 49
- UTI Multiplex (UTI) Page 43



MICROBIOLOGY

▲ Bacteriology

Bacteriology - Comprehensive (MC)

Item PT05030

Procedures listed are offered a minimum of two times per year. All samples compatible with culture or molecular methods unless noted.

NOTE: Group A Strep antigen samples are not compatible with molecular methods. See ST product or WSM product on page 39.

	CLIA REGULATED	UNREGULATED
PROCEDURES	<ul style="list-style-type: none"> Anaerobic bacteria culture Antimicrobial susceptibility Blood culture C. difficile antigen and/or molecular Enteric pathogen identification Gram stain Group A Strep antigen detection Group A Strep culture/molecular 	<ul style="list-style-type: none"> Group B Strep culture/molecular Methicillin-resistant Staph aureus Miscellaneous culture N. gonorrhoeae culture Urine culture Vancomycin-resistant Enterococcus
		<ul style="list-style-type: none"> C. difficile toxin Colony count (urine culture) *

* Analyte(s) not yet accepted by the CAP Laboratory Accreditation Program

2024 Ship Dates	February 5	May 6	September 23	Three shipments per year Nine samples per shipment
------------------------	------------	-------	--------------	---

Bacteriology - Limited (MC)

Item PT05040

All samples compatible with culture or molecular methods unless noted.

NOTE: Group A Strep antigen samples are not compatible with molecular methods. See ST product or WSM product on page 39.

	CLIA REGULATED	UNREGULATED
PROCEDURES (NUMBER/YEAR)	<ul style="list-style-type: none"> Anaerobic bacteria culture (1) Antimicrobial susceptibility (4) Blood culture (2) Gram stain (3) Group A Strep antigen detection (3) Group A Strep culture/molecular (3) N. gonorrhoeae culture (3) Urine culture (3) Wound culture (1) 	<ul style="list-style-type: none"> Colony count (urine culture) *

* Analyte(s) not yet accepted by the CAP Laboratory Accreditation Program

2024 Ship Dates	February 5	May 6	September 23	Three shipments per year Five samples per shipment
------------------------	------------	-------	--------------	---

MICRO-BACTERIOLOGY

Bacterial Antigens - for meningitis (BA)

Item PT05000

Samples for rapid antigen detection. Compatible with Binax NOW and Wellcogen.

	CLIA REGULATED	UNREGULATED
PROCEDURES ANTIGEN DETECTION	<ul style="list-style-type: none"> • Group B Streptococci • Haemophilus influenzae type b • Neisseria meningitidis group A, C, Y, W135 • Neisseria meningitidis group B or E. coli K1 • Streptococcus pneumoniae 	
2024 Ship Dates	February 5 May 6	September 23
		Three shipments per year Five samples per shipment

Bacterial Vaginosis Detection - Waived Methods (BV)

Item PT05005

Samples for the detection of bacterial vaginosis intended for use with the OSOM BVBLUE Test kit.

	CLIA REGULATED	UNREGULATED
PROCEDURES		• Bacterial vaginosis detection
2024 Ship Dates	April 15 October 7	
		Two shipments per year Three samples per shipment

Bioterrorism Preparedness Exercise (BPE)

Item PT06010

This is an educational exercise intended to document QA/competency for biological emergency response situations. It provides surrogate organisms with characteristics that mimic potentially lethal pathogens. Scores are not transmitted to accreditation agencies.

State coordinators can arrange to enroll and fund their response network (sentinel) laboratories. They will receive copies of all reports for use in assessment and documentation of capacity, readiness, and training needs.

2024 Ship Dates	March 11 October 7	Two shipments per year Two samples per shipment
------------------------	-------------------------	--

Blood Culture (CB)

Samples for blood culture, including identification of bacteria and fungi.

	CLIA REGULATED	UNREGULATED
PROCEDURES	• Blood culture	• Gram stain
2024 Ship Dates	February 5 May 6	September 23
		Three shipments per year Five samples per shipment

Item PT05360
2 Sample Add-on Item PT05370
QE Product Item PT05365

NOTE: Item PT05370 can be added to any other Bacteriology product.

For Blood Pathogen Multiplex see BPM product on page 36.

MICROBIOLOGY

▲ Bacteriology

Blood Pathogen Multiplex (BPM)

Item PT05480

Blood pathogen multiplex panel for molecular platforms. For detection of bacterial (aerobic and anaerobic) pathogens, mycology pathogens and resistance genes present in simulated positive blood culture.

Organisms listed below may be included in this module. Not all platforms will detect all targets listed.

	CLIA REGULATED	UNREGULATED	
PROCEDURES	<ul style="list-style-type: none"> • Acinetobacter calcoaceticus-baumannii complex • Bacillus cereus group • Bacillus subtilis group • Bacteroides fragilis • Candida albicans • Candida auris • Candida dubliniensis • Candida famata • Candida glabrata • Candida guilliermondii • Candida krusei • Candida lusitanae • Candida parapsilosis • Candida tropicalis • Citrobacter • Corynebacterium • Cronobacter sakazakii • Cryptococcus neoformans/gattii 	<ul style="list-style-type: none"> • Cutibacterium acnes (Propionibacterium acnes) • Enterobacter cloacae complex • Enterococcus faecalis • Enterococcus faecium • Escherichia coli • Fusarium • Fusobacterium necrophorum • Fusobacterium nucleatum • Haemophilus influenzae • Klebsiella aerogenes • Klebsiella oxytoca • Klebsiella pneumoniae group • Lactobacillus • Listeria monocytogenes • Micrococcus 	<ul style="list-style-type: none"> • Neisseria meningitidis • Proteus • Proteus mirabilis • Pseudomonas aeruginosa • Rhodotorula • Salmonella • Serratia marcescens • Staphylococcus • Staphylococcus aureus • Staphylococcus epidermidis • Staphylococcus lugdunensis • Stenotrophomonas maltophilia • Streptococcus • Streptococcus agalactiae • Streptococcus pneumoniae • Streptococcus pyogenes
		<ul style="list-style-type: none"> • Resistance genes (Appropriate for bacterial target selected) 	

2024 Ship Dates	February 5	May 6	September 23	Three shipments per year Five samples per shipment
------------------------	------------	-------	--------------	---

Bordetella by Molecular Methods (BOR)

Item PT05055

Intended for detection of B. pertussis, B. parapertussis, and/or B. holmesii by molecular methods.

	CLIA REGULATED	UNREGULATED
PROCEDURES		<ul style="list-style-type: none"> • Bordetella species detection

2024 Ship Dates	April 15	October 21	Two shipments per year Five samples per shipment
------------------------	----------	------------	---

Carbapenem Resistance Detection (CR)

Samples for detection of Carbapenem-resistant organisms (CRO). Intended for molecular methods, including the Cepheid GeneXpert Carba-R.

Item PT05330
QE Product Item PT05335

	CLIA REGULATED	UNREGULATED
PROCEDURES		<ul style="list-style-type: none"> • IMP detection • KPC detection • NDM-1 detection
		<ul style="list-style-type: none"> • OXA-48 detection • VIM detection
2024 Ship Dates	March 25 September 16	Two shipments per year Five samples per shipment

C. difficile (CD)

Compatible with rapid antigen or toxin detection methods as well as molecular methods.

Item PT05060
QE Product Item PT05065

	CLIA REGULATED	UNREGULATED
PROCEDURES	<ul style="list-style-type: none"> • C. difficile antigen detection • C. difficile molecular detection 	<ul style="list-style-type: none"> • C. difficile toxin detection
2024 Ship Dates	February 5 May 6 September 23	Three shipments per year Five samples per shipment

CT/GC/TV Detection (AC)

Samples containing human DNA. Intended for molecular methods.

Item PT05070

	CLIA REGULATED	UNREGULATED
PROCEDURES	<ul style="list-style-type: none"> • Chlamydia trachomatis detection • Neisseria gonorrhoeae detection 	<ul style="list-style-type: none"> • Trichomonas detection
2024 Ship Dates	February 5 May 6 September 23	Three shipments per year Five samples per shipment

Enteric Pathogens (NP)

Each organism is presented at least once per year. Compatible with culture, molecular methods and rapid Campylobacter identification methods.

Item PT05080

NOTE: NOT compatible with Shiga Toxin testing methods (see SHG product on page 42).

	CLIA REGULATED	UNREGULATED
PROCEDURES	<ul style="list-style-type: none"> • Aeromonas • Campylobacter • E. coli O157:H7 • Plesiomonas 	<ul style="list-style-type: none"> • Salmonella • Shigella • Vibrio • Yersinia
2024 Ship Dates	February 5 May 6 September 23	Three shipments per year Five samples per shipment

MICROBIOLOGY

▲ Bacteriology

GI Multiplex (EP)

Item PT05380

Samples intended for gastrointestinal multiplex assays. Organisms listed below may be included in this module. Not all platforms will detect all targets listed.

	CLIA REGULATED	UNREGULATED
PROCEDURES	<ul style="list-style-type: none"> • Adenovirus • Astrovirus • C. difficile • Campylobacter • Escherichia coli (toxigenic) • Norovirus 	<ul style="list-style-type: none"> • Plesiomonas • Rotavirus • Salmonella • Sapovirus • Shigella • Vibrio • Yersinia

2024 Ship Dates	February 5	May 6	September 23	Three shipments per year Five samples per shipment
------------------------	------------	-------	--------------	---

Gram Stain (GS)

Item PT05090
QE Product Item PT05100

Unfixed slides for Gram staining.

	CLIA REGULATED	UNREGULATED
PROCEDURES	<ul style="list-style-type: none"> • Gram reaction 	<ul style="list-style-type: none"> • Organism morphology

2024 Ship Dates	February 5	May 6	September 23	Three shipments per year Five samples per shipment
------------------------	------------	-------	--------------	---

Group A Strep Antigen (Rapid Strep) (SA)

Item PT05110
QE Product Item PT05120

Samples for Group A Streptococci antigen detection (rapid strep).

	CLIA REGULATED	UNREGULATED
PROCEDURES	<ul style="list-style-type: none"> • Group A Strep antigen detection 	

2024 Ship Dates	February 5	May 6	September 23	Three shipments per year Five samples per shipment
------------------------	------------	-------	--------------	---

NOTE: Group A Strep antigen samples are not compatible with molecular methods. See ST product or WSM product on page 39.

Group A Strep Antigen (Rapid Strep) - Waived Methods (WS)

Item PT05130
QE Product Item PT05155

Intended for waived methods only.

	CLIA REGULATED	UNREGULATED
PROCEDURES		<ul style="list-style-type: none"> • Group A Strep antigen detection

2024 Ship Dates	April 1	October 14	Two shipments per year Three samples per shipment
------------------------	---------	------------	--

Product available in POC Package -see page 55.

NOTE: Customers using molecular methods, see WSM product page 39.

Group A Strep Molecular - Waived Methods (WSM)

Item PT05410
QE Product Item PT05415

Intended for waived molecular methods only.

	CLIA REGULATED	UNREGULATED
PROCEDURES		<ul style="list-style-type: none"> Group A Strep molecular detection
2024 Ship Dates	April 15 October 7	Two shipments per year Three samples per shipment

Group A Strep (ST)

Item PT05170

Samples for detection of Group A Streptococci. Compatible with culture and molecular methods.

	CLIA REGULATED	UNREGULATED
PROCEDURES	<ul style="list-style-type: none"> Group A Strep 	
2024 Ship Dates	February 5 May 6 September 23	Three shipments per year Five samples per shipment

Group B Strep / Neisseria gonorrhoeae (SB)

Item PT05180
QE Product Item PT05185

Samples for detection of Group B Streptococci by culture or molecular methods and/or N. gonorrhoeae by culture.

	CLIA REGULATED	UNREGULATED
PROCEDURES	<ul style="list-style-type: none"> Group B Strep Neisseria gonorrhoeae 	
2024 Ship Dates	February 5 May 6 September 23	Three shipments per year Five samples per shipment

Helicobacter pylori Antigen, Stool (HPSA)

Item PT05400

0.5mL liquid samples intended for the qualitative evaluation of Helicobacter pylori antigen in stool specimens.

NOTE: For serum Helicobacter pylori, see HL product on page 28.

	CLIA REGULATED	UNREGULATED
PROCEDURES		<ul style="list-style-type: none"> Helicobacter pylori antigen detection *
2024 Ship Dates	April 15 October 7	Two shipments per year Two samples per shipment

* Analyte(s) not yet accepted by the CAP Laboratory Accreditation Program

MICROBIOLOGY

▲ Bacteriology

Helicobacter pylori - Rapid Urease (RUR)

Item PT05500

Simulated gastric biopsy samples on paper disks. Intended for use with CLOtest, PyloriTek, or similar methods.

NOTE: For serum Helicobacter pylori, see HL product on page 28.

CLIA REGULATED		UNREGULATED	
ANALYTES		• Urease *	
2024 Ship Dates	April 15	October 7	Two shipments per year Three samples per shipment

* Analyte(s) not yet accepted by the CAP Laboratory Accreditation Program

Legionella Antigen (LGA)

2 Sample Add-on Item PT05440

Samples for Legionella Antigen detection methods in urine.

NOTE: Item PT05440 can only be ordered when added to another Bacteriology product.

CLIA REGULATED		UNREGULATED	
ANALYTES	• Legionella antigen		
2024 Ship Dates	February 5	May 6	September 23
			Three shipments per year Two samples per shipment

Meningitis Multiplex (MEP)

Item PT05450

Samples intended for meningitis multiplex assays. Organisms listed below may be included in this module. Not all platforms will detect all targets listed.

CLIA REGULATED		UNREGULATED	
ANALYTES	<ul style="list-style-type: none"> • Cytomegalovirus (CMV) • Enterovirus (EV) • Escherichia coli K1 • Haemophilus influenzae • Herpes simplex virus 1 (HSV-1) • Herpes simplex virus 2 (HSV-2) • Human herpesvirus 6 (HHV-6) 	<ul style="list-style-type: none"> • Human parechovirus (HPeV) • Listeria monocytogenes • Neisseria meningitidis • Streptococcus agalactiae • Streptococcus pneumoniae • Varicella zoster virus (VZV) 	<ul style="list-style-type: none"> • Cryptococcus neoformans/gattii
2024 Ship Dates	February 5	May 6	September 23
			Three shipments per year Five samples per shipment

MICRO-BACTERIOLOGY

MRSA / VRE (MR)

Item PT05200
QE Product Item PT05210

Compatible with culture and molecular methods. NOT intended for methods that screen for specific VRE genes (vanA, vanB, etc.).

	CLIA REGULATED	UNREGULATED
PROCEDURES	<ul style="list-style-type: none"> • Staphylococcus aureus • Methicillin-resistant S. aureus • Vancomycin-resistant Enterococcus 	
2024 Ship Dates	February 5 May 6	September 23
		Three shipments per year Five samples per shipment

Mycoplasma genitalium Molecular (MG)

Item PT05460

Samples for molecular detection of Mycoplasma genitalium.

	CLIA REGULATED	UNREGULATED
PROCEDURES		<ul style="list-style-type: none"> • M. genitalium detection
2024 Ship Dates	April 15 October 7	
		Two shipments per year Three samples per shipment

Pneumonia Multiplex (PNM)

Item PT05490

Pneumonia multiplex panel for platforms such as BioFire. Qualitative reporting of all analytes, semi-quantitative reporting of select bacterial analytes. Organisms listed below may be included in this module. Not all platforms will detect all listed analytes.

NOTE: For Respiratory Multiplex see RP product on page 49.

	CLIA REGULATED	UNREGULATED	
PROCEDURES	<ul style="list-style-type: none"> • Acinetobacter calcoaceticus-baumannii complex • Adenovirus • Chlamydia pneumoniae • Coronavirus • Enterobacter cloacae complex • Escherichia coli • Haemophilus influenzae • Human Metapneumovirus • Human Rhinovirus/Enterovirus 	<ul style="list-style-type: none"> • Influenza A • Influenza B • Klebsiella aerogenes • Klebsiella oxytoca • Klebsiella pneumoniae group • Legionella pneumophila • Moraxella catarrhalis • Mycoplasma pneumoniae • Parainfluenza virus 	<ul style="list-style-type: none"> • Proteus • Pseudomonas aeruginosa • Respiratory Syncytial Virus • Serratia marcescens • Staphylococcus aureus • Streptococcus agalactiae • Streptococcus pneumoniae • Streptococcus pyogenes
		<ul style="list-style-type: none"> • Resistance genes (Appropriate for bacterial analytes selected) 	
2024 Ship Dates	February 5 May 6	September 23	
		Three shipments per year Five samples per shipment	

MICROBIOLOGY

▲ Bacteriology

Shiga Toxin (SHG)

Item PT05240
QE Product Item PT05245

Samples for Shiga toxin 1 and/or 2 and undifferentiated detection methods. Compatible with rapid antigen detection and molecular methods.

	CLIA REGULATED	UNREGULATED
PROCEDURES		<ul style="list-style-type: none"> • Shiga toxin 1 detection • Shiga toxin 2 detection • Shiga toxin undifferentiated

2024 Ship Dates April 15 October 7 Two shipments per year
Three samples per shipment

Throat/Urine Bacteriology (TU)

Item PT05250

Samples for urine culture, Group A Streptococci culture/molecular, and Group A Streptococci antigen detection (rapid strep).

NOTE: Group A Strep antigen samples are not compatible with molecular methods. See ST product or WSM product on page 39.

	CLIA REGULATED	UNREGULATED
PROCEDURES (NUMBER/ SHIPMENT)	<ul style="list-style-type: none"> • Antimicrobial susceptibility (1) • Gram stain (1) • Group A Strep antigen detection (2) • Group A Strep culture/molecular (2) • Urine culture (3) 	<ul style="list-style-type: none"> • Colony count (urine culture) *

2024 Ship Dates February 5 May 6 September 23 Three shipments per year
Seven samples per shipment

* Analyte(s) not yet accepted by the CAP Laboratory Accreditation Program

Throat/Urine Bacteriology - Limited (TU)

Item PT05260

Samples for urine culture and Group A Streptococci culture/molecular.

	CLIA REGULATED	UNREGULATED
PROCEDURES (NUMBER/ SHIPMENT)	<ul style="list-style-type: none"> • Antimicrobial susceptibility (1) • Gram stain (1) • Group A Strep culture/molecular (2) • Urine culture (3) 	<ul style="list-style-type: none"> • Colony count (urine culture) *

2024 Ship Dates February 5 May 6 September 23 Three shipments per year
Five samples per shipment

* Analyte(s) not yet accepted by the CAP Laboratory Accreditation Program

Urine Culture (UC)

Item PT05270

Samples for urine culture.

	CLIA REGULATED	UNREGULATED
PROCEDURES (NUMBER/ SHIPMENT)	<ul style="list-style-type: none"> • Antimicrobial susceptibility (1) • Gram stain (1) • Urine culture (5) 	<ul style="list-style-type: none"> • Colony count (urine culture) *

2024 Ship Dates February 5 May 6 September 23 Three shipments per year
Five samples per shipment

* Analyte(s) not yet accepted by the CAP Laboratory Accreditation Program

MICRO-BACTERIOLOGY

UTI Multiplex (UTI)

Item PT05510

UTI multiplex panel for molecular platforms. For detection of bacterial pathogens, mycology pathogens and resistance genes present in urine. Organisms listed below may be included in this module. Not all platforms will detect all listed targets.

	CLIA REGULATED	UNREGULATED	
PROCEDURES	<ul style="list-style-type: none"> • Acinetobacter baumannii • Aerococcus urinae • Bacillus atrophaeus • Bacteroides fragilis • Citrobacter freundii • Citrobacter koseri • Enterobacter aerogenes • Enterobacter cloacae • Enterococcus faecalis • Enterococcus faecium 	<ul style="list-style-type: none"> • Escherichia coli • Klebsiella oxytoca • Klebsiella pneumoniae • Morganella morganii • Mycoplasma hominis • Prevotella bivia • Proteus mirabilis • Proteus vulgaris • Providencia stuartii • Pseudomonas aeruginosa 	<ul style="list-style-type: none"> • Serratia marcescens • Staphylococcus aureus • Staphylococcus saprophyticus • Streptococcus agalactiae • Streptococcus pyogenes • Ureaplasma urealyticum
		<ul style="list-style-type: none"> • Candida albicans • Candida dubliniensis • Candida glabrata • Candida guilliermondii • Candida koseri • Candida krusei • Candida parapsilosis • Candida tropicalis • Molecular resistance genes (Associated with target organism selected) 	

2024 Ship Dates	February 5	May 6	September 23	Three shipments per year Five samples per shipment
------------------------	------------	-------	--------------	---

Vaginal Pathogens (VP)

Item PT05280
QE Product Item PT05290

Intended for use with the BD Affirm VPIII.

	CLIA REGULATED	UNREGULATED
PROCEDURES	<ul style="list-style-type: none"> • Gardnerella detection 	<ul style="list-style-type: none"> • Candida detection • Trichomonas detection

2024 Ship Dates	February 5	May 6	September 23	Three shipments per year Five samples per shipment
------------------------	------------	-------	--------------	---

VP Molecular (VPM)

Item PT05470

Samples for detection of vaginal pathogens via molecular methods. Compatible with most molecular platforms including BD MAX and Cepheid GeneXpert Xpress Vaginal Panels.

	CLIA REGULATED	UNREGULATED
PROCEDURES		<ul style="list-style-type: none"> • Bacterial vaginosis detection • Candida detection • Trichomonas detection

2024 Ship Dates	February 5	May 6	September 23	Three shipments per year Five samples per shipment
------------------------	------------	-------	--------------	---

MICRO-BACTERIOLOGY

MICROBIOLOGY

▲ Mycobacteriology

Acid-Fast Stain (MA)

Intended for reporting the presence or absence of acid-fast bacilli.

Item PT06000
Add-on to MB (below) Item PT06005

	CLIA REGULATED	UNREGULATED
PROCEDURES	• Acid-fast stain	
2024 Ship Dates	January 29 August 19	Two shipments per year Five samples per shipment

Mycobacteriology Culture (MB)

Samples for Mycobacterium species culture.

Item PT06060

	CLIA REGULATED	UNREGULATED
PROCEDURES	• Mycobacteria culture	
2024 Ship Dates	January 29 August 19	Two shipments per year Five samples per shipment

M. tuberculosis by Molecular Methods (TB)

Intended for Mycobacterium tuberculosis detection by molecular methods. Includes detection of Rifampin resistance.

Item PT06050
QE Product Item PT06055

	CLIA REGULATED	UNREGULATED
PROCEDURES		• M. tuberculosis detection • Rifampin resistance screen
2024 Ship Dates	January 29 August 19	Two shipments per year Five samples per shipment

MICRO-MYCObACTERIOLOGY



KOH Slides (KOH)

Item PT06230

Slides for KOH/calcofluor white preparations. Samples for detection of yeast and fungal elements on skin.

	CLIA REGULATED	UNREGULATED	
PROCEDURES		• KOH Preparation	
2024 Ship Dates	April 15	October 7	Two shipments per year Three samples per shipment

Mycology - Comprehensive (MY)

Item PT06070

Samples for comprehensive fungal culture including yeast, dermatophytes, and aerobic actinomycete identification.

	CLIA REGULATED	UNREGULATED	
PROCEDURES	• Aerobic Actinomycetes identification • Mold, yeast, and yeast-like organism identification		
2024 Ship Dates	February 5	May 6	September 23
			Three shipments per year Five samples per shipment

Mycology - Cryptococcal Antigen (MYC)

Item PT06080

Simulated CSF samples for cryptococcal antigen detection.

	CLIA REGULATED	UNREGULATED	
PROCEDURES		• Cryptococcal antigen detection	
2024 Ship Dates	February 5	May 6	September 23
			Three shipments per year Five samples per shipment

Mycology - Dermatophyte (DM)

Item PT06090

Compatible with Dermatophyte Test Medium [DTM] or non-specialized and non-differential mycology media.

Two reporting options: 1) Qualitative - Designed for laboratories or dermatology offices reporting the presence or absence of dermatophytes. 2) Identification - Designed for laboratories or dermatology offices identifying dermatophytes to a genus or species level.

	CLIA REGULATED	UNREGULATED	
PROCEDURES	• Dermatophyte identification to genus or species level (Identification)	• Dermatophyte screen by culture (Qualitative)	
2024 Ship Dates	February 5	May 6	September 23
			Three shipments per year Five samples per shipment

MICROBIOLOGY

▲ Mycology

India Ink (IND)

Item PT06105

Liquid samples to detect presence or absence of encapsulated yeast using India Ink methods.

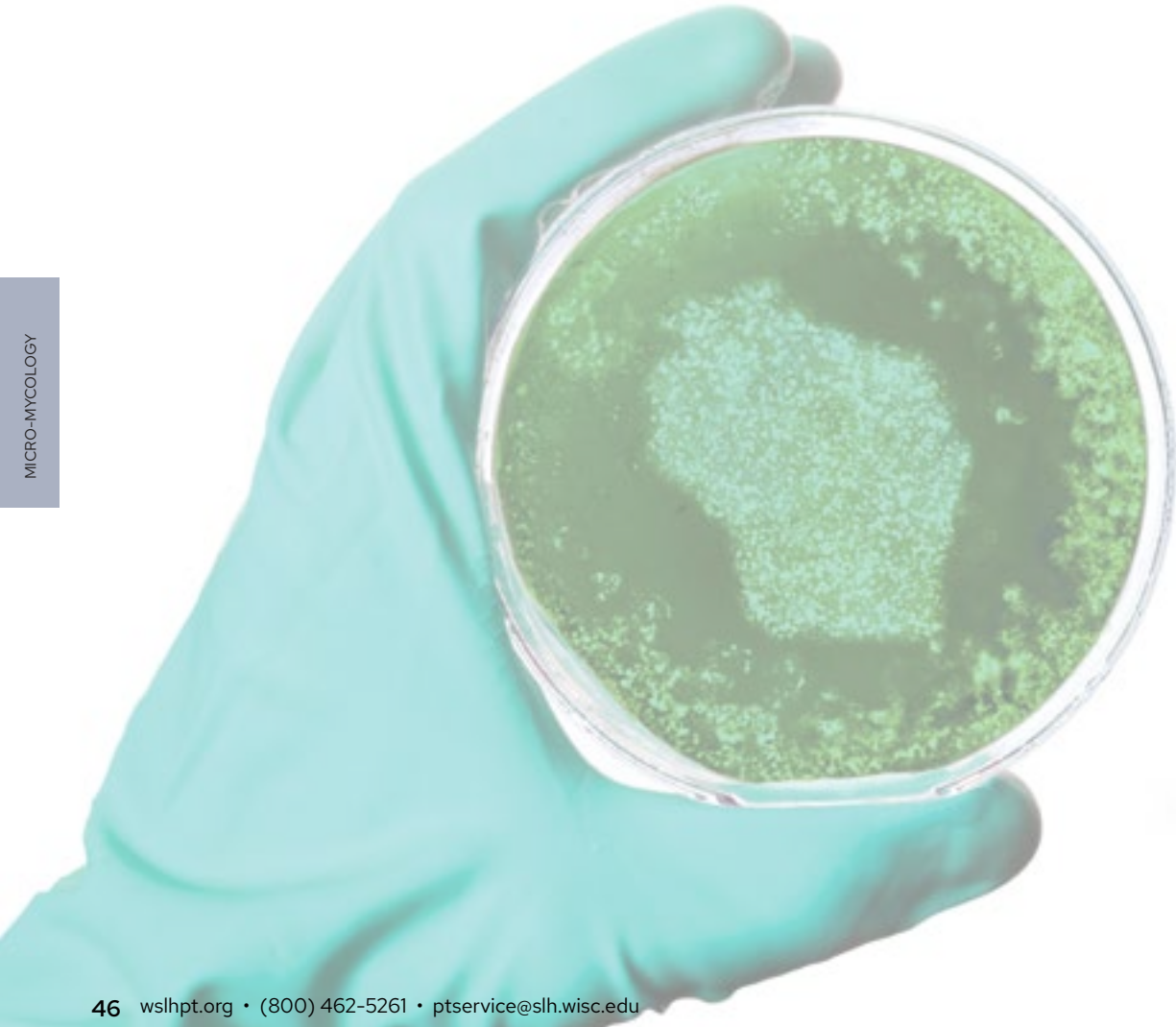
	CLIA REGULATED	UNREGULATED
PROCEDURES		• India Ink
2024 Ship Dates	April 15 October 7	Two shipments per year Three samples per shipment

Mycology - Yeast (YE)

Item PT06100

Samples for yeast culture. Not intended for wet mount preparations.

	CLIA REGULATED	UNREGULATED
PROCEDURES	• Yeast and yeast-like organism identification	
2024 Ship Dates	February 5 May 6 September 23	Three shipments per year Five samples per shipment



MICRO-MYCOLOGY

Blood Parasites (PAB)

Item PT06020

Samples include slides with giemsa-stained thick and thin blood smears and/or photomicrographs.

	CLIA REGULATED		UNREGULATED	
PROCEDURES	• Blood parasite Identification			
2024 Ship Dates	February 5	May 6	September 23	Three shipments per year Five samples per shipment

Giardia/Cryptosporidium Antigen Detection (GI)

Item PT06030

Intended for laboratories performing Giardia/Cryptosporidium screening on stool samples.

	CLIA REGULATED		UNREGULATED	
PROCEDURES	• Giardia/Cryptosporidium antigen detection			
2024 Ship Dates	February 5	May 6	September 23	Three shipments per year Five samples per shipment

Parasitology - Comprehensive (PA)

Item PT06110

Sample types include formalin-preserved stool, zinc-PVA stool smears, and blood parasite smears/photomicrographs. Intended for Level 2 laboratories (as defined by CLIA '88) performing full O&P identification of stool specimens.

	CLIA REGULATED		UNREGULATED	
PROCEDURES	<ul style="list-style-type: none"> • Blood parasite identification • Giardia/Cryptosporidium antigen detection • Modified acid-fast stain • Permanent stain • Stool wet mount 			
2024 Ship Dates	February 5	May 6	September 23	Three shipments per year Six samples per shipment

MICROBIOLOGY

▲ Parasitology

Trichomonas Molecular (TVM)

Item PT05320

Liquid samples for molecular detection of Trichomonas.

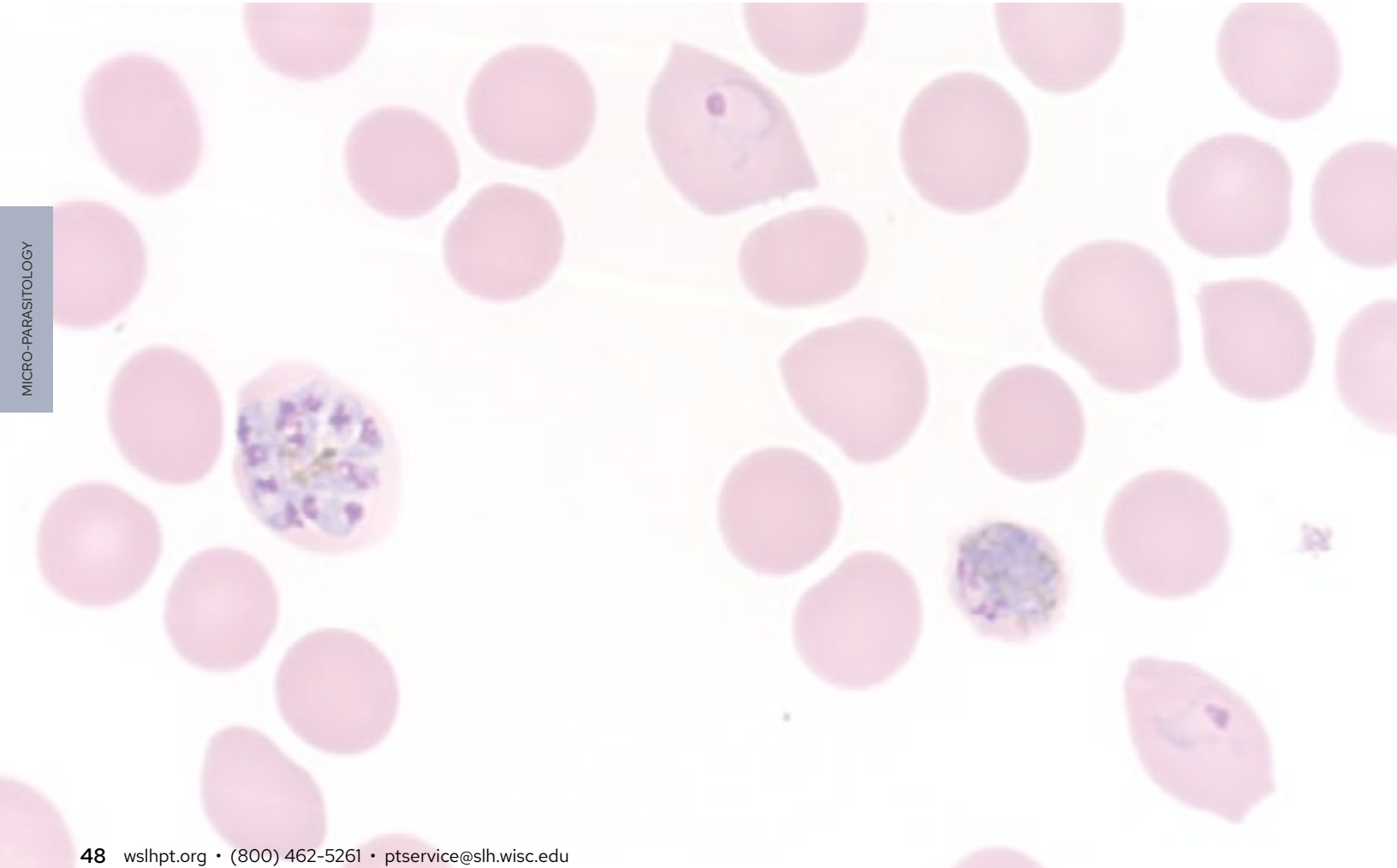
	CLIA REGULATED	UNREGULATED
PROCEDURES		• Trichomonas detection
2024 Ship Dates	April 15 October 7	Two shipments per year Three samples per shipment

Trichomonas - Waived Methods (TV)

Item PT05310
QE Product Item PT05315

Samples for detection of Trichomonas intended for use with OSOM Trichomonas Rapid Test.

	CLIA REGULATED	UNREGULATED
PROCEDURES		• Trichomonas detection
2024 Ship Dates	April 15 October 7	Two shipments per year Three samples per shipment



MICRO-PARASITOLOGY

HPV Molecular (HPV)

Item PT06250

1mL liquid samples intended for molecular detection of Human papillomavirus.

	CLIA REGULATED		UNREGULATED	
ANALYTES	• HPV		• HPV Genotyping	
2024 Ship Dates	February 5	May 6	September 23	Three shipments per year Five samples per shipment

HSV Molecular (HSV)

Item PT06220

1mL liquid samples intended for molecular detection of Herpes simplex virus (HSV) 1 & 2.

	CLIA REGULATED		UNREGULATED	
ANALYTES	• HSV 1	• HSV 2		
2024 Ship Dates	February 5	May 6	September 23	Three shipments per year Five samples per shipment

Rabies (RA)

Dual impressions on Teflon-coated slides.

DFA Method Item PT06130
QE Product DFA Method Item PT06137
dRIT Method Item PT06140
QE Product dRIT Method Item PT06147

	CLIA REGULATED		UNREGULATED	
ANALYTES			• Rabies Antigen	
2024 Ship Dates	April 15	October 21	Two shipments per year Five samples per shipment	

Respiratory Multiplex (RP)

Lyophilized samples intended for molecular respiratory multiplex assays.

Item PT06240
QE Product Item PTO6244

NOTE: For methods that detect SARS/Influenza or SARS/Influenza/RSV, see CM and CMW products on page 50.

	CLIA REGULATED		UNREGULATED	
ANALYTES	• Adenovirus • Bordetella • Chlamydia pneumoniae • Coronavirus • Human metapneumovirus • Influenza	• Mycoplasma pneumoniae • Parainfluenza • Respiratory syncytial virus (RSV) • Rhinovirus/Enterovirus • SARS-CoV-2		
2024 Ship Dates	February 5	May 6	September 23	Three shipments per year Five samples per shipment

MICROBIOLOGY

▲ Virology

SARS-CoV-2 Antigen (CV)

Swabs intended for antigen tests targeting the SARS-CoV-2 nucleoprotein.

Item PT06288
QE Product Item PT06289

NEW!

	CLIA REGULATED	UNREGULATED
ANALYTES	• SARS-CoV-2	
2024 Ship Dates	February 5 May 6	September 23
		Three shipments per year Five samples per shipment

SARS-CoV-2 Antigen - Waived Methods (CVW)

Swabs intended for waived antigen tests targeting the SARS-CoV-2 nucleoprotein.

Item PT06290
QE Product Item PT06295

	CLIA REGULATED	UNREGULATED
ANALYTES		• SARS-CoV-2
2024 Ship Dates	May 6 September 23	
		Two shipments per year Three samples per shipment

SARS/Viral Molecular (CM)

Swabs with elution liquid intended for molecular detection of SARS-CoV-2 (whole genome), Influenza, and RSV. Can be used for multi-analyte SARS/Viral methods or single SARS methods.

Item PT06270
QE Product Item PT06275

NOTE: Contact WSLH PT for ordering instruction if additional swabs are needed for processing of separate test cartridges.

Hologic Aptima users order CLM product on page 51.

	CLIA REGULATED	UNREGULATED
ANALYTES	• Influenza A • Influenza B	• RSV • SARS-CoV-2
2024 Ship Dates	February 5 May 6	September 23
		Three shipments per year Five samples per shipment

SARS/Viral Molecular - Waived Methods (CMW)

Swabs with elution liquid intended for molecular detection of waived SARS-CoV-2 (whole genome), Influenza, and RSV methods. Can be used for waived multi-analyte SARS/Viral or single SARS methods.

Item PT06280
QE Product Item PT06285

NOTE: Contact WSLH PT for ordering instruction if additional swabs are needed for processing of separate test cartridges.

Hologic Aptima users order CLM product on page 51.

	CLIA REGULATED	UNREGULATED
ANALYTES		• Influenza A • Influenza B
2024 Ship Dates	May 6 September 23	
		Two shipments per year Three samples per shipment

SARS-CoV-2 Molecular Liquid (CLM)

1mL liquid samples for molecular detection of SARS-CoV-2 (whole genome). Intended for analyzer assays such as BD, Hologic, and Roche.

Item PT06300
QE Product Item PT06305

ENHANCED

	CLIA REGULATED		UNREGULATED	
ANALYTES	• SARS-CoV-2			
2024 Ship Dates	February 5	May 6	September 23	Three shipments per year Five samples per shipment

Viral - Limited (VA)

1mL liquid samples for rapid antigen test kits or molecular methods.

Item PT06150
QE Product Item PT06160

	CLIA REGULATED		UNREGULATED	
ANALYTES	• Adenovirus • Influenza A	• Influenza B • RSV		
2024 Ship Dates	February 5	May 6	September 23	Three shipments per year Five samples per shipment

Viral with Rotavirus (VA)

1mL liquid samples for rapid antigen test kits or molecular methods.

Item PT06200
QE Product Item PT06210

NOTE: Customers not testing Rotavirus, choose Limited product above.

	CLIA REGULATED		UNREGULATED	
ANALYTES	• Adenovirus • Influenza A • Influenza B	• RSV • Rotavirus		
2024 Ship Dates	February 5	May 6	September 23	Three shipments per year Five samples per shipment

Viral - Waived Methods (VCW)

1mL liquid samples for waived rapid antigen test kits or molecular methods.

Item PT06170
QE Product Item PT06195

* Analyte(s) not yet accepted by the CAP Laboratory Accreditation Program

	CLIA REGULATED		UNREGULATED	
ANALYTES			• Adenovirus * • Influenza A	• Influenza B • RSV
2024 Ship Dates	May 6	September 23	Two shipments per year Three samples per shipment	



URINALYSIS/MICROSCOPY/MISC

Amniotic Fluid Detection (AE)

Item PT03000

1mL liquid samples for detecting the presence/absence of fluid from ruptured fetal membranes. Intended for use with the Actim PROM, AmniSure ROM, Clinical Innovations ROM Plus, and PartoSure.

NOTE: For Amniotic pH and pH ruptured interpretation, see PH product on page 11.

	CLIA REGULATED	UNREGULATED
ANALYTES		<ul style="list-style-type: none"> • Rupture of fetal membranes
2024 Ship Dates	May 20 October 21	Two shipments per year Two samples per shipment

Body Fluid Cell Count (BFA & BFM)

Automated cell count (BFA) Item PT03030
Manual cell count (BFM) Item PT03040
QE Product BFA Item PT03037

Clear, protein-based, liquid samples intended for labs performing body fluid cell counts by automated or manual methods. These samples are NOT compatible with the IRIS IQ200.

	CLIA REGULATED	UNREGULATED
ANALYTES		<ul style="list-style-type: none"> • RBC • WBC
2024 Ship Dates	April 1 October 14	Two shipments per year Three samples per shipment

Body Fluid Microscopy (BF)

Item PT03050

Three images (paper and online versions) that include crystal(s) and/or cell identification(s) found in miscellaneous fluids (e.g., synovial, spinal, pleural). A synovial fluid crystal identification will be provided in one of the three images per event.

	CLIA REGULATED	UNREGULATED
ANALYTES		<ul style="list-style-type: none"> • Cell identification • Crystal identification
2024 Ship Dates	April 1 October 14	Two shipments per year Three samples per shipment

Fecal Lactoferrin (LF)

Item PT03060

0.5mL liquid samples compatible with the LEUKO-TEST, LEUKO EZ VUE, IBD-Chek, and IBD EZ VUE methods.

	CLIA REGULATED	UNREGULATED
ANALYTES		<ul style="list-style-type: none"> • Lactoferrin
2024 Ship Dates	April 1 October 14	Two shipments per year Three samples per shipment

URINALYSIS/MICROSCOPY/MISC

Fecal Occult Blood (OC)

Simulated fecal samples compatible with FOB (slide), iFOB, and automated systems.

Item PT03070
 QE Product Item PT03095
 Product available in POC Package -see page 55.

CLIA REGULATED		UNREGULATED
ANALYTES		<ul style="list-style-type: none"> Occult blood (fecal)
2024 Ship Dates	April 1	October 14
		Two shipments per year Three samples per shipment

Fetal Fibronectin (FFN)

1mL liquid simulated cervicovaginal samples.

Item PT03100

CLIA REGULATED		UNREGULATED
ANALYTES		<ul style="list-style-type: none"> Fetal fibronectin
2024 Ship Dates	May 20	October 21
		Two shipments per year Three samples per shipment

Gastric Occult Blood (GO)

Liquid samples intended for Beckman Coulter Gastrocuccult slides and Aerscher HemaPrompt FG slides.

Item PT03110
 QE Product Item PT03135

CLIA REGULATED		UNREGULATED
ANALYTES		<ul style="list-style-type: none"> Occult blood (gastric)
2024 Ship Dates	April 1	October 14
		Two shipments per year Three samples per shipment

Provider Performed Microscopy (PM)

Two images (paper and online versions) for each of the procedures listed below.

Item PT03170
 QE Product Item PT03195
 Product available in POC Package -see page 55.

CLIA REGULATED		UNREGULATED
ANALYTES		<ul style="list-style-type: none"> Fecal smear for leukocytes Fern test KOH (skin & vaginal) Nasal smear for eosinophils Pinworm preparation Urine sediment Vaginal wet preparation
2024 Ship Dates	April 1	October 14
		Two shipments per year Two challenges per procedure

NOTE: Online PPM Competency is also available on page 59.

URINALYSIS/MICROSCOPY/MISC

Urinalysis / Urine hCG (UR)

Liquid samples for urinalysis and urine pregnancy.

	CLIA REGULATED	UNREGULATED
ANALYTES		<ul style="list-style-type: none"> • Bilirubin • Bilirubin - Tablet test • Glucose • hCG, urine – qualitative • Hemoglobin/Blood • Ketones
		<ul style="list-style-type: none"> • Ketones - Tablet test • Leukocyte esterase • Nitrites • pH • Protein • Specific gravity • Urobilinogen

2024 Ship Dates April 1 October 14 Two shipments per year
Three samples per shipment

Item PT03260
QE Product Item PT03285

Product available in POC Package –see page 55.

NOTE: For serum hCG see CET and HCG products on page 13.

Urine hCG - 5 Samples (UH)

Liquid samples for urine pregnancy.

	CLIA REGULATED	UNREGULATED
ANALYTES		<ul style="list-style-type: none"> • hCG, urine – qualitative

2024 Ship Dates April 1 October 14 Two shipments per year
Five samples per shipment

Item PT03290
QE Product Item PT03315

NOTE: For serum hCG see CET and HCG products on page 13.

Urine Sediment Identification (SU)

Two images (paper and online versions) for the identification of urine sediment components.

	CLIA REGULATED	UNREGULATED
ANALYTES		<ul style="list-style-type: none"> • Urine sediment component identification

2024 Ship Dates April 1 October 14 Two shipments per year
Two challenges per shipment

Item PT03320
QE Product Item PT03345

URINE/MICRO/MISC

URINALYSIS/MICROSCOPY/MISC

Create Your Own Point of Care Package

Create your POC package in three easy steps:

1. Order Item PT03400 and choose 2 to 4 items from the POC Product list below.
2. Need more than 4 items? Order Item PT03401 and choose additional items from the POC Product list.
3. Need Quality Evaluation (QE) sets? Order individually by choosing items from the QE Product list.
QE Products may be ordered for secondary methods or multiple on-site testing (i.e. multiple whole blood glucose meters). These products can only be ordered in conjunction with a corresponding Primary product and may be ordered in multiples.

Item PT03400
Add-on to POC Package Item PT03401

NOTE: If ordering only one item see individual product listings.

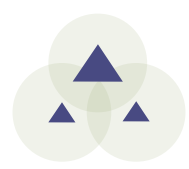
For complete product descriptions and individual product listings refer to pages listed below.

- OC - page 53
- WBG - page 14
- WS - page 38
- HW - page 25
- HWG - page 26
- HWH - page 26
- MW - page 31
- PM - page 53
- UR - page 54

POC PRODUCTS FOR ITEMS PT03400 AND PT03401	POC ITEM #
• Fecal Occult Blood (OC)	PT03075
• Glucose Whole Blood (WBG)	PT01881
• Group A Strep Antigen - Waived Methods (WS)	PT05135
• Hematocrit - Waived Methods (HW)	PT02151
• Hemoglobin - Waived Methods (HWG)	PT01451
• Hemoglobin - HemoCue Hb 301 & Hb 801 - Waived (HWH)	PT01456
• Mono Immunoserology - Waived Methods (MW)	PT04222
• Provider Performed Microscopy (PM)	PT03175
• Urinalysis/Urine hCG (UR)	PT03265

INDIVIDUAL QE PRODUCTS	QE ITEM #
• Fecal Occult Blood (OC)	PT03095
• Glucose Whole Blood (WBG)	PT01895
• Group A Strep Antigen - Waived Methods (WS)	PT05155
• Hematocrit - Waived Methods (HW)	PT02175
• Hemoglobin - Waived Methods (HWG)	PT01475
• Hemoglobin - HemoCue Hb 301 & Hb 801 - Waived (HWH)	PT01465
• Provider Performed Microscopy (PM)	PT03195
• Urinalysis/Urine hCG (UR)	PT03285

2024 Ship Dates April 1 October 14 Two shipments per year
Two/Three challenges per shipment



ANDROLOGY

Post-Vasectomy Semen Analysis (PV)

Item PT03140

1mL stabilized liquid sperm samples for post-vasectomy presence/absence screening and sperm count. Samples designed for manual methods, may be compatible with automated methods.

	CLIA REGULATED	UNREGULATED
ANALYTES		<ul style="list-style-type: none">• Sperm count, qualitative (manual)• Sperm count, qualitative (automated)• Sperm count, quantitative (manual) *• Sperm count, quantitative (automated)
2024 Ship Dates	May 20 October 21	Two shipments per year Two samples per shipment

* Analyte(s) not yet accepted by the CAP Laboratory Accreditation Program

Sperm Count (SP)

Item PT03200

1mL stabilized liquid sperm samples. Samples designed for manual methods, may be compatible with automated methods.

	CLIA REGULATED	UNREGULATED
ANALYTES		<ul style="list-style-type: none">• Sperm count, quantitative (manual)• Sperm count, quantitative (automated) *
2024 Ship Dates	May 20 October 21	Two shipments per year Two samples per shipment

* Analyte(s) not yet accepted by the CAP Laboratory Accreditation Program

Sperm Morphology (SM & SMS)

Unstained slide (SM) Item PT03210
Pre-stained slide (SMS) Item PT03220

Slide and image for percent normal and morphology assessment. Pre-stained slide is stained with modified Papanicolaou.

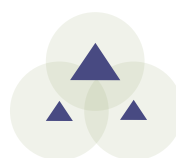
	CLIA REGULATED	UNREGULATED
ANALYTES		<ul style="list-style-type: none">• Sperm morphology
2024 Ship Dates	May 20 October 21	Two shipments per year One slide & image per shipment

Sperm Motility (MOT)

Item PT03230

Web-based videos of two semen samples with multiple microscopic fields showing live and immobilized sperm.

	CLIA REGULATED	UNREGULATED
ANALYTES		<ul style="list-style-type: none">• Sperm motility• Sperm progressive motility
2024 Ship Dates	May 20 October 21	Two shipments per year Two videos per shipment



ONLINE TRAINING & COMPETENCY

WSLH PT brings you online training & competency in partnership with Medical Training Solutions (MTS) at the University of Washington



Clinical Laboratory

Track training and competency of staff involved in all phases of laboratory testing: specimen collection, transport, processing and analysis.



Point of Care

Administer and track competency tests for staff using microscopes, waived test kits, and instruments at the point of care.



Specimen Collection

Track and document training and competency assessment for specimen collection staff.

Provide your staff customizable online training & competency courses. Used by 1500 laboratories, these programs feature:

- Streamlined tracking and documentation
- High quality multimedia content developed with the University of Washington
- Over 50 hour of Continuing Education (CE) credit
- Create your own tests
- Upload and track your existing documents
- New questions in each Competency topic are published biannually
- Automated login - staff receive automated email with a link to login directly to their assignments menu
- Automated email notifications - one click sends reminders to staff
- Simple test interfaces - Easy-to-use multiple choice format
- Track progress in real-time and generate printable reports

[View a demo video](#) or [submit an order form](#) online at wslhpt.org.

ORDER OPTIONS

All order options include access for up to 30 individuals. Please consult the price list for additional fees for more than 30 users.

Order Options for Training Courses and Competency Tests

- BEST OPTION -
Receive All Training Courses and Competency Tests for \$900!

Items may be ordered separately or combined for savings. View complete order options for Training Courses and Competency Tests on the 2024 Price List.

Order Options for Microscopy Procedures (PPMP)

PPMP Training Courses and PPMP Competency Assessment may be ordered separately or combined for savings.

View order options on the 2024 Price List.

Order Options for Waived Test Kits and POC Instruments (WPOC)

WPOC Competency Assessment may be ordered separately or as an add-on to any Training Course and/or Competency Test order.

View order options on the 2024 Price List.



ONLINE TRAINING & COMPETENCY

TRAINING COURSES AND COMPETENCY TESTS

Initial enrollment includes 1-30 users. Additional fee applies for over 30 users; see price list.

Facility Fee (more than 30 users) **PT80910**

Training Courses and Competency Tests combined

All of both Training and Competency

PT80900

Individual Training and Competency combined

See below

Training Courses

All Training Courses

PT80000

Individual Training Courses

See below

Training courses are accredited for 1-3 hours of continuing education (CE) credit and can be used for initial training, cross training, remediation, and as a reference.

Utilization Management		Patient Complications	PT80510	Body Fluids	
Case Studies in	PT80540	Patient Identification	PT80360	Amniotic Fluid	PT80210
Laboratory Stewardship		Pediatric Phlebotomy	PT80340	Cerebrospinal Fluid	PT80020
Managing Reference Labs	PT80550	Skin Puncture	PT80370	Fern Test	PT80480
Overview		Venipuncture	PT80380	Seminal Fluid	PT80180
HIPAA 101	PT80560	Specimen Transport & Processing		Serous Fluid	PT80190
Introduction to Analytic QA	PT80150	Courier Transport	PT80410	Skin KOH	PT80490
Introduction to the Clinical Laboratory	PT80060	Specimen Processing	PT80130	Synovial Fluid	PT80200
Patient Safety	PT80090	Specimen Transport	PT80400	Vaginal Wet Prep	PT80470
Safety		Laboratory Skills		Microbiology	
Biosafety	PT80120	Microscopy	PT80080	Gram Stain	PT80030
Chemical Safety	PT80260	Molecular Diagnostics		Mycology	PT80070
Chemical Waste	PT80460	Introduction to Molecular Diagnostics	PT80420	Parasitology	PT80220
Dry Ice and Liquid Nitrogen Safety	PT80500	Chemistry		Blood Bank	
Electrical Safety	PT80290	Cardiac Markers	PT80160	Introduction to Transfusion	PT80010
Ergonomic Safety	PT80310	Protein Electrophoresis	PT80110	Transfusion Safety:	
Fire Safety	PT80300	Urinalysis	PT80140	Ordering & Administering	PT80230
Formaldehyde Safety	PT80330	Hematology		Specimen Collection	PT80240
HazCom Standard - GHS Update	PT80270	Peripheral Blood	PT80040	Testing and Issuance	PT80250
UV Safety	PT80320	Coagulation		Immunology	
Specimen Collection		Coagulation	PT80170	ANCA	PT80450
Advanced Phlebotomy	PT80350			Anti-nuclear Antibody	PT80430
Basic Phlebotomy	PT80100			Crithidia	PT80530
Blood Culture	PT80390			Laboratory Methods	PT80050
Infection Control	PT80280			Mouse Stomach Kidney	PT80440

Competency Tests

All Competency Tests

PT81000

Individual Competency Tests

See below

Five- or ten-question multiple choice competency assessment tests (accredited for 0.5 hours of CE credit each) are published biannually on January 1st and July 1st in each category.

Pre-Analytic		Transfusion Safety:		Hepatitis & HIV Ab	PT81070
Chain of Custody	PT81190	Specimen Collection	PT81220	Microbiology	PT81090
Customer Service	PT81170	Analytic		Mouse Stomach Kidney	PT81260
Patient Safety	PT81100	ANCA	PT81270	Protein Electrophoresis	PT81120
Pediatric Phlebotomy	PT81180	Anti-nuclear Antibody	PT81080	Semen Analysis	PT81230
Phlebotomy	PT81110	Chemistry	PT81030	Toxicology	PT81150
Safety	PT81130	Coagulation	PT81040	Transfusion Safety: Testing & Issuance	PT81240
Specimen Processing	PT81140	CSF/Serous	PT81020	Transfusion Service: Basic	PT81010
Specimen Transport	PT81200	Gram Stain	PT81050	Transfusion Service: Intermediate	PT81250
Transfusion Safety:		Hematology	PT81060	Urinalysis	PT81160
Ordering & Administering	PT81210				

ONLINE TRAINING & COMPETENCY

POINT OF CARE

Microscopy Procedures (PPMP)

- Training Courses & Competency Assessment

PPMP Training Courses	PT80520
PPMP Competency Assessment	PT81900
PPMP Training and PPMP Competency together	PT81920
PPMP Competency Add-on to Training and/or Competency	PT81903

Includes:	PPMP Training	PPMP Competency
	<ul style="list-style-type: none"> • Basic Microscopy • Fern Test • Pinworm • Qualitative Semen 	<ul style="list-style-type: none"> • Skin KOH • Urine Sediment • Vaginal Wet Prep • Fecal WBC

Waived Test Kits & POC Instruments (WPOC)

- Competency Assessment

WPOC Competency Assessment	PT81910
WPOC Competency Add-on to Training and/or Competency	PT81913

Includes:	WPOC Competency Assessment	WPOC Competency Add-on to Training and/or Competency
<ul style="list-style-type: none"> • Aceava Mono Cassette • Aceava Strep A • Accu-Chek Inform Glucose Meter • Alere hCG Cassette • Amniotest • AmniSure • Assure COVID-19 IgG/IgM • AVOXimeter 1000E • BD Veritor Flu A+B • BiliChek • BinaxNOW COVID-19 Ag Card • BinaxNOW Influenza A&B Card 2 	<ul style="list-style-type: none"> • BinaxNOW RSV • Cepheid Xpress SARS-Co-V-2 • Chemstrip 10 SG • Cholestech LDX - AST/ALT • Clearview Mono • Clinitek - Clinitek hCG • Clinitek - Multistix 10 SG • CLOTtest • CoaguChek XS • ColoScreen • Consult Influenza A&B Cassette • DCA Vantage • Determine HIV Ag/Ab Combo • ESR 	<ul style="list-style-type: none"> • Gastrocullt • HemaPrompt Fecal Occult Blood • HemaPrompt FG • Hemocult / Hemocult II • Hemocult Sensa • Hemochron Signature Elite • HemoCue 201 Glucose • HemoCue Hb 201 • ID Now COVID-19 • ID Now Influenza A&B • i-STAT - Cartridges • i-STAT - Operations

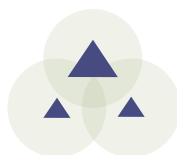
MTS LECTURE LIBRARY SUBSCRIPTION

PT81800

Subscription provides access to a monthly, live 1 hour webinar primarily focused on Laboratory Management topics. Subscribers may share the access with all employees in their organization. After participating in each webinar, users have the option to complete a test to earn 1.0 CE credits.

This subscription also provides the user access to the library of more than 60 archived lectures. Each lecture is archived and available on their MTS account approximately one month after the presentation date.

Upon completion of the archived lecture the user will be able to complete a 10 question test and then earn 1.0 CE credits.



ASSAYED SAMPLE SETS

Assayed Sample Set products provide high-quality samples which can be used for test validation, method correlation, calibration verification/linearity, employee training and/or competency requirements.

To order Assayed Sample Sets, [submit an order form](https://www.wslhpt.org) online at [wslhpt.org](https://www.wslhpt.org).

Blood Lead (VSPB)

Item PT07030

Five samples per shipment

Blood lead assayed sample sets include samples which cover the analytical range of most instruments with the target value and acceptable range for each sample. Orders include five samples in the following ranges: 2-5 ug/dL, 10-15 ug/dL, 20-25 ug/dL, 35-40 ug/dL, and 45-50 ug/dL. Sample ranges are subject to change due to sample availability.

Blood Lead (VSBL)

Item PT07020

Three samples per shipment

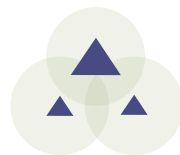
Blood lead assayed sample sets include samples which cover the analytical range of most instruments with the target value and acceptable range for each sample. Orders include three samples in the following ranges: 2-5 ug/dL, 20-25 ug/dL, and 45-50 ug/dL. Sample ranges are subject to change due to sample availability.

HIV (VSHV)

Item PT07010

Five liquid samples per shipment

Compatible with rapid and traditional testing methods along with automated combo assays used to detect HIV 1/2 antibody and p24 Antigen. Order includes 5 samples of either reactive or non-reactive targets.



ADDITIONAL PRODUCTS

Calibration Verification/Linearity Products

Provided in partnership with AUDIT MicroControls. Calibration Verification/Linearity products can assist laboratories in meeting CLIA '88 calibration verification requirements.

Purchase includes access to AUDITOR™, a QC data reduction software tool to view group peer data, evaluate, and create reports. Shipping available in the US.

[View available products](#) and [submit an order form](#) online at wslhpt.org or contact customer service at (800) 462-5261.

Evaluation Sets

Evaluation Sets are survey validated and can be a valuable tool when troubleshooting a PT failure, new method validation, or other QA activities. Each set includes samples from one or more past PT events with corresponding statistics. These may be available to laboratories which are not current customers with WSLH PT for the analyte(s) or sub-specialty being requested.

Please call for pricing and availability: (800) 462-5261.
Supplies may be limited in quantity and shelf-life.

Off-Schedule Proficiency Testing

WSLH PT can provide an off-schedule event in the case of PT failure (remedial) or for pre-licensure. We can also provide QC or past PT samples (see Evaluation Sets above) to confirm current system status. Prior to ordering off-schedule events, contact your accrediting agency to confirm necessity of formal off-schedule PT and determine timeliness of need (immediate versus this quarter, 2-day versus priority overnight delivery), as these affect pricing.

Please call for pricing and availability: (800) 462-5261.
Supplies may be limited in quantity and shelf-life.

Binders

WSLH PT offers 3-ring binders to organize your proficiency testing records, which must be retained for two years, unless longer retention is required. Binders contain dividers, preprinted labels, and blank labels.

Please indicate the number of binders desired on your order form.

PT07000



SHIPPING SCHEDULE

Blood Gas	Product Name	Item #	QE Item #	Blood Gas 1		Blood Gas 2		Blood Gas 3	
				Ships - 03/04/24		Ships - 06/24/24		Ships - 10/28/24	
				Due	QE Due	Due	QE Due	Due	QE Due
	Blood Gases / Electrolytes / Metabolites (BG)	PT01050	PT01060	03/22/24	03/29/24	07/12/24	07/19/24	11/15/24	11/22/24
	Blood Gas Hemoglobin / Hematocrit add-on (BGH)	PT01570	PT01580	03/22/24	03/29/24	07/12/24	07/19/24	11/15/24	11/22/24
	CO-Oximetry (CO)	PT01330	PT01340	03/22/24	03/29/24	07/12/24	07/19/24	11/15/24	11/22/24
	i-STAT Chemistries - Waived Methods (BGW)	PT01400	PT01425	03/22/24	03/29/24	07/12/24	07/19/24		
	i-STAT Chemistries Plus (BGB)	PT01345	PT01347	03/22/24	03/29/24	07/12/24	07/19/24	11/15/24	11/26/24

Chem/Endo/Tx	Product Name	Item #	QE Item #	Chem/Endo/Tx 1		Chem/Endo/Tx 2		Chem/Endo/Tx 3	
				Ships - 02/19/24		Ships - 06/17/24		Ships - 09/30/24	
				Due	QE Due	Due	QE Due	Due	QE Due
	Alcohol/Ketones, serum (AM)	PT01000	PT01010	03/08/24	03/15/24	07/05/24	07/12/24	10/18/24	10/25/24
	Bilirubin - Elevated (NB)	PT01430	PT01440	03/08/24	03/15/24	07/05/24	07/12/24	10/18/24	10/25/24
	Blood Lead-3 Samples (BL)	PT01070	PT01077	03/08/24	03/15/24			10/18/24	10/25/24
	Blood Lead-5 Samples (PB)	PT01080	PT01085	03/08/24	03/15/24	07/05/24	07/12/24	10/18/24	10/25/24
	Cardiac Markers - 3 sample (TM)	PT01230	PT01255	03/08/24	03/15/24			10/18/24	10/25/24
	Cardiac Markers - 5 sample (IE)	PT01260	PT01270	03/08/24	03/15/24	07/05/24	07/12/24	10/18/24	10/25/24
	Chemistry/Endocrinology/Therapeutic Drugs 1-11 (CET)	PT01310	PT01326	03/08/24	03/15/24	07/05/24	07/12/24	10/18/24	10/25/24
	Chemistry/Endocrinology/Therapeutic Drugs 12-21 (CET)	PT01314	PT01326	03/08/24	03/15/24	07/05/24	07/12/24	10/18/24	10/25/24
	Chemistry/Endocrinology/Therapeutic Drugs 22-30 (CET)	PT01318	PT01326	03/08/24	03/15/24	07/05/24	07/12/24	10/18/24	10/25/24
	Chemistry/Endocrinology/Therapeutic Drugs 31+ (CET)	PT01322	PT01326	03/08/24	03/15/24	07/05/24	07/12/24	10/18/24	10/25/24
	Chemistry - Waived Methods (WC)	PT01282	PT01284	03/08/24	03/15/24			10/18/24	10/25/24
	hCG, serum - qualitative (HCG)	PT01480	PT01490	03/08/24	03/15/24	07/05/24	07/12/24	10/18/24	10/25/24
	hCG, serum - qualitative (HCG) - Add on to CET	PT01495		03/08/24		07/05/24		10/18/24	
	Hemoglobin A1c - 5 samples (GHR)	PT01524	PT01529	03/08/24	03/15/24	07/05/24	07/12/24	10/18/24	10/25/24
	Urine Drug Adulteration Test (UDA)	PT01950	PT01955	03/08/24	03/15/24	07/05/24	07/12/24	10/18/24	10/25/24
	Urine Drug Screen - Ethyl Glucuronide (ETG)	PT01980		03/08/24		07/05/24		10/18/24	
	Urine Drug Screen (UD)	PT01810	PT01835	03/08/24	03/15/24	07/05/24	07/12/24	10/18/24	10/25/24

Special Chemistry	Product Name	Item #	QE Item #	Special Chem 1		Special Chem 2			
				Ships - 03/18/24		Ships - 08/26/24			
				Due	QE Due	Due	QE Due		
	Ammonia (NH)	PT01020	PT01045	04/05/24	04/12/24	09/13/24	09/20/24		
	Body Fluid Chemistry (PC)	PT01120	PT01145	04/05/24	04/12/24	09/13/24	09/20/24		
	Body Fluid pH - Visual (PH)	PT01150	PT01175	04/05/24	04/12/24	09/13/24	09/20/24		
	Hemoglobin A1c - 3 samples (GH)	PT01500	PT01522	04/05/24	04/12/24	09/13/24	09/20/24		
	Hemoglobin A1c - Afinion (GHA)	PT01530	PT01555	04/05/24	04/12/24	09/13/24	09/20/24		
	Immunoassay Chemistry 1-5 (CS)	PT01680	PT01692	04/05/24	04/12/24	09/13/24	09/20/24		
	Immunoassay Chemistry 6+ (CS)	PT01695	PT01707	04/05/24	04/12/24	09/13/24	09/20/24		
	Immunoassay Chemistry B (CSB)	PT01710	PT01715	04/05/24	04/12/24	09/13/24	09/20/24		
	Procalcitonin (PCT)	PT01900	PT01905	04/05/24	04/12/24	09/13/24	09/20/24		
	SHBG and Testosterone (SHBG)	PT01970		04/05/24		09/13/24			
	Spinal Fluid Chemistry (SF)	PT01720	PT01745	04/05/24	04/12/24	09/13/24	09/20/24		
	Spinal Fluid Chemistry (SF) - Add on to PC	PT01722		04/05/24		09/13/24			
	Tumor Markers (MT)	PT01750	PT01775	04/05/24	04/12/24	09/13/24	09/20/24		
	Urine Chemistry 1-3 (CU)	PT01780	PT01785	04/05/24	04/12/24	09/13/24	09/20/24		
	Urine Chemistry 4-10 (CU)	PT01786	PT01791	04/05/24	04/12/24	09/13/24	09/20/24		
	Urine Chemistry II+ (CU)	PT01792	PT01797	04/05/24	04/12/24	09/13/24	09/20/24		
	Urine Chemistry Afinion (ACR)	PT01960		04/05/24		09/13/24			

SHIPPING SCHEDULE

SHIPPING SCHEDULE

Coag, Coag QA, and Heme Reg are a combined shipment

Coag*			Coag 1		Coag 2		Coag 3	
			Ships - 02/12/24		Ships - 06/03/24		Ships - 09/09/24	
Product Name	Item #	QE Item #	Due	QE Due	Due	QE Due	Due	QE Due
Coagulation Basic (CA)	PT02060	PT02070	03/01/24	03/08/24	06/21/24	06/28/24	09/27/24	10/04/24
Protime / INR - CoaguChek XS (PXS)	PT02350	PT02360	03/01/24	03/08/24	06/21/24	06/28/24	09/27/24	10/04/24
Protime / INR - i-STAT and Coag-Sense (PRC)	PT02370	PT02380	03/01/24	03/08/24	06/21/24	06/28/24	09/27/24	10/04/24

Coag QA*			Coag QA 1		Coag QA 2		Coag QA 3	
			Ships - 02/12/24				Ships - 09/09/24	
Product Name	Item #	QE Item #	Due	QE Due	Due	QE Due	Due	QE Due
Activated Clotting Time (CT)	PT02030	PT02052	03/01/24	03/08/24			09/27/24	10/04/24
D-dimer (DD)	PT02080	PT02105	03/01/24	03/08/24			09/27/24	10/04/24
INR - CoaguChek Waived (CXSW)	PT02320	PT02345	03/01/24	03/08/24			09/27/24	10/04/24
INR - Coag-Sense Waived (CW)	PT02310	PT02315	03/01/24	03/08/24			09/27/24	10/04/24

Heme Reg*			Heme Reg 1		Heme Reg 2		Heme Reg 3	
			Ships - 02/12/24		Ships - 06/03/24		Ships - 09/09/24	
Product Name	Item #	QE Item #	Due	QE Due	Due	QE Due	Due	QE Due
Hematology Cell Identification (XI)	PT02220		03/01/24		06/21/24		09/27/24	
Hematology Comprehensive (AF1)	PT02230	PT02240	03/01/24	03/08/24	06/21/24	06/28/24	09/27/24	10/04/24
Hematology Comprehensive (AF2)	PT02250	PT02260	03/01/24	03/08/24	06/21/24	06/28/24	09/27/24	10/04/24
Hematology Comprehensive (AF3)	PT02270	PT02280	03/01/24	03/08/24	06/21/24	06/28/24	09/27/24	10/04/24
Hematology Comprehensive (AF4)	PT02285	PT02286	03/01/24	03/08/24	06/21/24	06/28/24	09/27/24	10/04/24
Hematology Comprehensive (AF5)	PT02290	PT02300	03/01/24	03/08/24	06/21/24	06/28/24	09/27/24	10/04/24
Hematology Comprehensive (AF6)	PT02295	PT02296	03/01/24	03/08/24	06/21/24	06/28/24	09/27/24	10/04/24
Hematology Limited - Sysmex (AS)	PT02200	PT02210	03/01/24	03/08/24	06/21/24	06/28/24	09/27/24	10/04/24
Hematology Limited (AT)	PT02190	PT02195	03/01/24	03/08/24	06/21/24	06/28/24	09/27/24	10/04/24
Reticulocytes - Beckman Coulter (RTB)	PT02442	PT02444	03/01/24	03/08/24			09/27/24	10/04/24
Reticulocytes - Manual & Some Automated (RT)	PT02420	PT02425	03/01/24	03/08/24			09/27/24	10/04/24
Reticulocytes - Sysmex (RTS)	PT02432	PT02434	03/01/24	03/08/24			09/27/24	10/04/24

Fetal Hb*			Fetal Hb 1		Fetal Hb 2			
			Ships - 04/22/24		Ships - 10/28/24			
Product Name	Item #		Due		Due			
Fetal Red Cell Detection (HBF)	PT04350		05/10/24		11/15/24			

Blood Bank*			Blood Bank 1		Blood Bank 2		Blood Bank 3	
			Ships - 02/26/24		Ships - 06/10/24		Ships - 10/07/24	
Product Name	Item #	QE Item #	Due	QE Due	Due	QE Due	Due	QE Due
Blood Bank - Comprehensive (AB)	PT04120	PT04130	03/15/24	03/22/24	06/28/24	07/05/24	10/25/24	11/01/24
Blood Bank - Limited (AB)	PT04140	PT04150	03/15/24	03/22/24	06/28/24	07/05/24	10/25/24	11/01/24
Direct Antiglobulin Test (DAT)	PT04145		03/15/24				10/25/24	

* Delivery for these products will be via overnight courier.

SHIPPING SCHEDULE

Immunology			Immunology 1 Ships - 01/22/24		Immunology 2 Ships - 05/13/24		Immunology 3 Ships - 09/03/24	
Product Name	Item #	QE Item #	Due	QE Due	Due	QE Due	Due	QE Due
ANA Immunoserology (XN)	PT04000		02/09/24		05/31/24		09/20/24	
ASO Immunoserology (XS)	PT04070		02/09/24		05/31/24		09/20/24	
CRP Immunoserology (XP)	PT04160	PT04185	02/09/24	02/16/24			09/20/24	09/27/24
Helicobacter pylori Serology (HL)	PT04010		02/09/24				09/20/24	
Hepatitis (YB)	PT04190		02/09/24		05/31/24		09/20/24	
Hepatitis (YB) - Add on to HV or HVC	PT04195		02/09/24		05/31/24		09/20/24	
Hepatitis C - Waived Methods (YBC)	PT04192	PT04193	02/09/24	02/16/24			09/20/24	09/27/24
Anti-HIV (HV)	PT04020	PT04030	02/09/24	02/16/24	05/31/24	06/07/24	09/20/24	09/27/24
Anti-HIV - Waived Methods (HVW)	PT04040	PT04062	02/09/24	02/16/24			09/20/24	09/27/24
Immunoproteins (IMP)	PT04290		02/09/24		05/31/24		09/20/24	
Infectious Disease Serology (MMV)	PT04320		02/09/24				09/20/24	
Lyme Disease Serology (LY)	PT04200		02/09/24				09/20/24	
Mono Immunoserology (ZM)	PT04210		02/09/24		05/31/24		09/20/24	
Mono Immunoserology Waived (MW)	PT04220	PT04245	02/09/24	02/16/24			09/20/24	09/27/24
Mycoplasma Antibody (MP)	PT04300		02/09/24				09/20/24	
Rheumatoid Factor (ZR)	PT04250		02/09/24		05/31/24		09/20/24	
Rubella IgM Immunoserology (XM)	PT04330		02/09/24				09/20/24	
Rubella Immunoserology (XU)	PT04260		02/09/24		05/31/24		09/20/24	
SARS -CoV-2 Serology (SCA)	PT04340	PT04345	02/09/24	02/16/24			09/20/24	09/27/24
Syphilis Serology (SS)	PT04270	PT04280	02/09/24	02/16/24	05/31/24	06/07/24	09/20/24	09/27/24
Syphilis Serology - Waived Methods (SSW)	PT04272	PT04273	02/09/24	02/16/24			09/20/24	09/27/24
Thyroid Antibodies (THY)	PT04310		02/09/24				09/20/24	

Micro QA			Micro QA 1 Ships - 04/15/24		Micro QA 2 Ships - 10/07/24	
Product Name	Item #	QE Item #	Due	QE Due	Due	QE Due
Bacterial Vaginosis Detection - Waived Methods (BV)	PT05005		05/03/24		10/25/24	
Group A Strep Molecular Waived (WSM)	PT05410	PT05415	05/03/24	05/10/24	10/25/24	11/01/24
Helicobacter pylori Antigen, Stool (HPSA)	PT05400		05/03/24		10/25/24	
Helicobacter pylori Rapid Urease (RUR)	PT05500		05/03/24		10/25/24	
India Ink (IND)	PT06105		05/03/24		10/25/24	
KOH Slides (KOH)	PT06230		05/03/24		10/25/24	
Mycoplasma genitalium Molecular (MG)	PT05460		05/03/24		10/25/24	
Shiga Toxin (SHG)	PT05240	PT05245	05/03/24	05/10/24	10/25/24	11/01/24
Trichomonas Molecular (TVM)	PT05320		05/03/24		10/25/24	
Trichomonas - Waived Methods (TV)	PT05310	PT05315	05/03/24	05/10/24	10/25/24	11/01/24

SHIPPING SCHEDULE

Bacti_Viral and SP Micro are a combined shipment

Bacti_Viral			Bacti_Viral 1		Bacti_Viral 2		Bacti_Viral 3	
			Ships - 02/05/24		Ships - 05/06/24		Ships - 09/23/24	
Product Name	Item #	QE Item #	Due	QE Due	Due	QE Due	Due	QE Due
Bacterial Antigens (BA)	PT05000		02/23/24		05/24/24		10/11/24	
Bacteriology Comprehensive (MC)	PT05030		02/23/24		05/24/24		10/11/24	
Bacteriology Limited (MC)	PT05040		02/23/24		05/24/24		10/11/24	
Blood Culture (CB)	PT05360	PT05365	02/23/24	03/01/24	05/24/24	05/31/24	10/11/24	10/18/24
Blood Culture (CB) - 2 sample Add on	PT05370		02/23/24		05/24/24		10/11/24	
Blood Pathogen Multiplex (BPM)	PT05480		02/23/24		05/24/24		10/11/24	
C. difficile (CD)	PT05060	PT05065	02/23/24	03/01/24	05/24/24	05/31/24	10/11/24	10/18/24
CT/GC/TV Detection (AC)	PT05070		02/23/24		05/24/24		10/11/24	
Enteric Pathogens (NP)	PT05080		02/23/24		05/24/24		10/11/24	
GI Multiplex (EP)	PT05380		02/23/24		05/24/24		10/11/24	
Gram Stain (GS)	PT05090	PT05100	02/23/24	03/01/24	05/24/24	05/31/24	10/11/24	10/18/24
Group A Strep (ST)	PT05170		02/23/24		05/24/24		10/11/24	
Group A Strep Antigen (SA)	PT05110	PT05120	02/23/24	03/01/24	05/24/24	05/31/24	10/11/24	10/18/24
Group B Strep / Neisseria gonorrhoeae (SB)	PT05180	PT05185	02/23/24	03/01/24	05/24/24	05/31/24	10/11/24	10/18/24
HPV Molecular (HPV)	PT06250		02/23/24		05/24/24		10/11/24	
HSV Molecular (HSV)	PT06220		02/23/24		05/24/24		10/11/24	
Legionella Antigen (LGA)	PT05440		02/23/24		05/24/24		10/11/24	
Meningitis Multiplex (MEP)	PT05450		02/23/24		05/24/24		10/11/24	
MRSA/VRE (MR)	PT05200	PT05210	02/23/24	03/01/24	05/24/24	05/31/24	10/11/24	10/18/24
Pneumonia Multiplex (PNM)	PT05490		02/23/24		05/24/24		10/11/24	
Respiratory Multiplex (RP)	PT06240	PT06244	02/23/24	03/01/24	05/24/24	05/31/24	10/11/24	10/18/24
SARS-CoV-2 Antigen (CV)	PT06288	PT06289	02/23/24	03/01/24	05/24/24	05/31/24	10/11/24	10/18/24
SARS-CoV-2 Antigen - Waived Methods (CVW)	PT06290	PT06295			05/24/24	05/31/24	10/11/24	10/18/24
SARS/Viral Molecular (CM)	PT06270	PT06275	02/23/24	03/01/24	05/24/24	05/31/24	10/11/24	10/18/24
SARS/Viral Molecular - Waived Methods (CMW)	PT06280	PT06285			05/24/24	05/31/24	10/11/24	10/18/24
SARS-CoV-2 Molecular Liquid (CLM)	PT06300	PT06305	02/23/24	03/01/24	05/24/24	05/31/24	10/11/24	10/18/24
Throat/Urine Bacteriology (TU)	PT05250		02/23/24		05/24/24		10/11/24	
Throat/Urine Bacteriology Limited (TLU)	PT05260		02/23/24		05/24/24		10/11/24	
Urine Culture (UC)	PT05270		02/23/24		05/24/24		10/11/24	
UTI Multiplex (UTI)	PT05510		02/23/24		05/24/24		10/11/24	
Vaginal Pathogens (VP)	PT05280	PT05290	02/23/24	03/01/24	05/24/24	05/31/24	10/11/24	10/18/24
Viral - Limited (VA)	PT06150	PT06160	02/23/24	03/01/24	05/24/24	05/31/24	10/11/24	10/18/24
Viral - Waived Methods (VCW)	PT06170	PT06195			05/24/24	05/31/24	10/11/24	10/18/24
Viral with Rotavirus (VA)	PT06200	PT06210	02/23/24	03/01/24	05/24/24	05/31/24	10/11/24	10/18/24
VP Molecular (VPM)	PT05470		02/23/24		05/24/24		10/11/24	
SP Micro-A			SP Micro-A1		SP Micro-A2		SP Micro-A3	
			Ships - 02/05/24		Ships - 05/06/24		Ships - 09/23/24	
Product Name	Item #		Due		Due		Due	
Blood Parasites (PAB)	PT06020		02/23/24		05/24/24		10/11/24	
Giardia/Cryptosporidium Antigen (GI)	PT06030		02/23/24		05/24/24		10/11/24	
Mycology Cryptococcal Antigen (MYC)	PT06080		02/23/24		05/24/24		10/11/24	
Parasitology Comprehensive (PA)	PT06110		02/23/24		05/24/24		10/11/24	
SP Micro-B			SP Micro-B1		SP Micro-B2		SP Micro-B3	
			Ships - 02/05/24		Ships - 05/06/24		Ships - 09/23/24	
Product Name	Item #		Due		Due		Due	
Mycology Dermatophyte (DM)	PT06090		03/15/24		06/14/24		11/01/24	
Mycology Yeast (YE)	PT06100		03/15/24		06/14/24		11/01/24	
SP Micro-C			SP Micro-C1		SP Micro-C2		SP Micro-C3	
			Ships - 02/05/24		Ships - 05/06/24		Ships - 09/23/24	
Product Name	Item #		Due		Due		Due	
Mycology Comprehensive (MY)	PT06070		04/05/24		07/05/24		11/26/24	

SHIPPING SCHEDULE

Bioterrorism Preparedness		Bioterrorism 1		Bioterrorism 2	
		Ships - 03/11/24		Ships - 10/07/24	
Product Name	Item #	Due	Due		
Bioterrorism Preparedness Exercise (BPE)	PT06010	03/29/24	10/25/24		

CRE			CRE 1		CRE 2	
			Ships - 03/25/24		Ships - 09/16/24	
Product Name	Item #	QE Item #	Due	QE Due	Due	QE Due
Carbapenem Resistance Detection (CR)	PT05330	PT05335	04/12/24	04/19/24	10/04/24	10/11/24

TB-A and TB-B are a combined shipment

TB-A			TB-A1		TB-A2	
			Ships - 01/29/24		Ships - 08/19/24	
Product Name	Item #	QE Item #	Due	QE Due	Due	QE Due
Acid-Fast Stain (MA)	PT06000		02/16/24		09/06/24	
Acid-Fast Stain (MA) - Add on to MB	PT06005		02/16/24		09/06/24	
M. tuberculosis Molecular (TB)	PT06050	PT06055	02/16/24	02/23/24	09/06/24	09/13/24

TB-B			TB-B1		TB-B2	
			Ships - 01/29/24		Ships - 08/19/24	
Product Name	Item #		Due		Due	
Mycobacteriology Culture (MB)	PT06060		03/29/24		10/18/24	

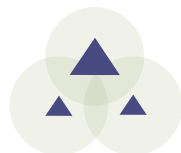
Frozen Micro*			Frozen Micro 1		Frozen Micro 2	
			Ships - 04/15/24		Ships - 10/21/24	
Product Name	Item #	QE Item #	Due	QE Due	Due	QE Due
Bordetella by Molecular Methods (BOR)	PT05055		05/03/24		11/08/24	
Rabies by DFA (RA)	PT06130	PT06137	05/03/24	05/10/24	11/08/24	11/15/24
Rabies by dRIT (RA)	PT06140	PT06147	05/03/24	05/10/24	11/08/24	11/15/24

* Delivery for these products will be via overnight courier.

SHIPPING SCHEDULE

Misc QA_POC			Misc QA_POC 1		Misc QA_POC 2	
			Ships - 04/01/24		Ships - 10/14/24	
Product Name	Item #	QE Item #	Due	QE Due	Due	QE Due
Body Fluid Cell Count Automated (BFA)	PT03030	PT03037	04/19/24	04/26/24	11/01/24	11/08/24
Body Fluid Cell Count Manual (BFM)	PT03040		04/19/24		11/01/24	
Body Fluid Microscopy (BF)	PT03050		04/19/24		11/01/24	
Fecal Lactoferrin (LF)	PT03060		04/19/24		11/01/24	
Fecal Occult Blood (OC)	PT03070	PT03095	04/19/24	04/26/24	11/01/24	11/08/24
Fecal Occult Blood (OC) - POC Package	PT03075		04/19/24		11/01/24	
Gastric Occult Blood (GO)	PT03110	PT03135	04/19/24	04/26/24	11/01/24	11/08/24
Glucose, Whole Blood-5 Samples (WBG)	PT01886	PT01888	04/19/24	05/03/24	11/01/24	11/15/24
Glucose, Whole Blood-3 Samples (WBG)	PT01880	PT01895	04/19/24	05/03/24	11/01/24	11/15/24
Glucose, Whole Blood-3 Samples (WBG) - POC Package	PT01881		04/19/24		11/01/24	
Group A Strep Antigen Waived (WS)	PT05130	PT05155	04/19/24	04/26/24	11/01/24	11/08/24
Group A Strep Antigen Waived (WS) - POC Package	PT05135		04/19/24		11/01/24	
Hematocrit Waived (HW)	PT02150	PT02175	04/19/24	04/26/24	11/01/24	11/08/24
Hematocrit Waived (HW) - POC Package	PT02151		04/19/24		11/01/24	
Hemoglobin - HemoCue Hb 301 & Hb 801 - Waived (HWH)	PT01455	PT01465	04/19/24	04/26/24	11/01/24	11/08/24
Hemoglobin - HemoCue Hb 301 & Hb 801 - Waived (HWH) - POC Package	PT01456		04/19/24		11/01/24	
Hemoglobin - Waived methods (HWG)	PT01450	PT01475	04/19/24	04/26/24	11/01/24	11/08/24
Hemoglobin - Waived methods (HWG) - POC Package	PT01451		04/19/24		11/01/24	
Mono Immunoserology Waived (MW) - POC package	PT04222		04/19/24		11/01/24	
Provider Performed Microscopy (PM)	PT03170	PT03195	04/19/24	04/26/24	11/01/24	11/08/24
Provider Performed Microscopy (PM) - POC Package	PT03175		04/19/24		11/01/24	
Sedimentation Rate (SR)	PT02450	PT02465	04/19/24	04/26/24	11/01/24	11/08/24
Sedimentation Rate iSED systems and Alifax (SRI)	PT02520	PT02525	04/19/24	04/26/24	11/01/24	11/08/24
Sedimentation Rate Polymedco Sedimat 15 & ESR Stat Plus (SRA)	PT02470	PT02485	04/19/24	04/26/24	11/01/24	11/08/24
Sickle Cell Screen (SK)	PT02490	PT02515	04/19/24	04/26/24	11/01/24	11/08/24
Urinalysis/Urine hCG (UR)	PT03260	PT03285	04/19/24	04/26/24	11/01/24	11/08/24
Urinalysis/Urine hCG (UR) - POC Package	PT03265		04/19/24		11/01/24	
Urine hCG 5 samples (UH)	PT03290	PT03315	04/19/24	04/26/24	11/01/24	11/08/24
Urine Sediment Identification (SU)	PT03320	PT03345	04/19/24	04/26/24	11/01/24	11/08/24

Semen		Semen 1		Semen 2	
		Ships - 05/20/24		Ships - 10/21/24	
Product Name	Item #	Due	Due	Due	Due
Amniotic Fluid Detection (AE)	PT03000	06/07/24		11/08/24	
Fetal Fibronectin (FFN)	PT03100	06/07/24		11/08/24	
Post-Vasectomy Semen Analysis (PV)	PT03140	06/07/24		11/08/24	
Sperm Count (SP)	PT03200	06/07/24		11/08/24	
Sperm Morphology pre-stained slide (SMS)	PT03220	06/07/24		11/08/24	
Sperm Morphology unstained slide (SM)	PT03210	06/07/24		11/08/24	
Sperm Motility (MOT)	PT03230	06/07/24		11/08/24	



INDEX

A

ABO group	27
A/C ratio	17
Acetaminophen	13
Acetaminophen, urine	18
Acetone.	10
6-AM (6-Acetylmorphine)	18
Acid-fast stain	44
Acinetobacter	36, 41, 43
Activated clotting time (ACT)	19
Activated partial thromboplastin time (APTT)	19
Adenovirus	38, 41, 49, 51
Aerobic Actinomycetes identification	45
Aerococcus.	43
Aeromonas	37
Alanine Aminotransferase (ALT)	13, 14
Albumin	13, 14
Albumin, body fluid	11
Alcohol (ethanol)	10
Alcohol (ethanol), urine.	18
Alkaline phosphatase (ALKP)	13, 14
Alpha-1 Antitrypsin (AAT)	30
Alpha-fetoprotein	13
Amikacin	13
Ammonia	10
Amniotic fluid detection	11, 52
Amphetamines.	18
Amylase.	13, 14
Amylase, body fluid	11
Amylase, urine	17
Anaerobic bacteria culture	34
Anaplasma	47
Andrology	56
Antibody identification, blood bank	27
Anti-HIV	29, 60
Antimicrobial susceptibility	34, 42
Antinuclear antibody (ANA)	28
Antistreptolysin O (ASO)	28
Anti-Thyroglobulin.	32
Anti-Thyroid Peroxidase	32
Aspartate Aminotransferase (AST)	13, 14
Astrovirus.	38

B

Bacillus	36, 43
Bacterial vaginosis detection	35, 43
Bacteroides	36, 43
Bacteriology	33-43
Barbiturates	18
Benzodiazepines	18
Beta-2 Microglobulin	17
Beta-hydroxybutyrate.	10
Bilirubin, direct	10, 13
Bilirubin, total	10, 13, 14
Bilirubin, urine	54, 55
Bioterrorism Preparedness Exercise	35
Blood Bank.	27
Blood culture	34, 35, 36
Blood Pathogen Multiplex	36
Blood Gases	8, 9
Blood Lead	11, 60
Blood parasite identification	47
BNP	12

Bordetella	36, 49
Borrelia burgdorferi (Lyme disease).	30
Buprenorphine	18

C

C. difficile.	34, 37, 38
C-peptide	16
C-reactive protein (CRP).	12, 28
CA 125	17
CA 15-3	17
CA 19-9.	17
CA 27.29	17
Calcium, ionized	8
Calcium, total	13, 14
Calcium, urine	17
Campylobacter	37, 38
Candida.	36, 43, 45
Cannabinoids (THC)	18
Carbamazepine	13
Carbapenem resistance	37
Carbon dioxide (CO ₂).	8, 13, 14
Carboxyhemoglobin.	9
Carcinogenic embryonic antigen (CEA)	15
Cardiac Markers	12
Carisoprodol	18
Cell identification, body fluid.	52
Cell identification, hematology	23
Chemistry - Body Fluid	11
Chemistry - Immunoassay	15
Chemistry - Spinal Fluid	16
Chemistry - Urine	17
Chemistry - Waived Methods	9, 14
Chlamydia	37, 41, 49
Chloride	8, 9, 13, 14
Chloride, spinal fluid.	16
Chloride, urine	17
Cholesterol, body fluid	11
Cholesterol, HDL	13, 14
Cholesterol, LDL	13, 14
Cholesterol, total	13, 14
Citrobacter	36, 43
CK-MB	12
Coagulation	19, 20
Cocaine metabolites	18
Colony Count (urine culture)	34, 42
Compatibility testing	27
Complement C3, C4	30
Coronavirus	32, 41, 49, 50, 51
Cortisol	13
Corynebacterium	36
Cotinine.	18
Creatine Kinase (CK)	12, 13, 14
Creatinine	8, 9, 13, 14
Creatinine, body fluid	11
Creatinine, urine	17, 18
Cronobacter	36
Cryptococcal antigen detection.	45
Cryptococcus	36, 40
Cryptosporidium detection	38, 47
Crystal identification, body fluid	52
Cutibacterium	36
Cyclospora	38
Cytomegalovirus (CMV)	40

INDEX

D

DAT	27
D-dimer	12, 19
Dermatophyte	45
DHEA Sulfate	15
Digoxin	13

E

EDDP	18
Endocrinology	13
Entamoeba	38
Enteric pathogen identification	34, 37
Enterobacter	36, 41, 43
Enterococcus	36, 43
Enterovirus (EV)	40, 49
Eosinophils, nasal smear	53, 55
Erythrocyte count (RBC), blood	22
Erythrocyte count (RBC), body fluid	52
Erythrocyte sedimentation rate	24
Escherichia (E. coli)	35, 36, 37, 38, 40, 41, 43
Estradiol	15
Ethanol (alcohol)	10
Ethanol (alcohol), urine	18
Ethyl Glucuronide (EtG)	18

F

Fecal smear for leukocytes	53, 55
Fentanyl	18
Fern test	53, 55
Ferritin	15
Fetal fibronectin	53
Fetal hemoglobin	25
Fetal Screen	25
Fetal Red Cell Detection	25
Fibrinogen	19
Folate	15
Follicle stimulating hormone (FSH)	15
Free thyroxine (FT4)	13
Free triiodothyronine (FT3)	13
Fungus Identification	45, 46
Fusarium	36
Fusobacterium	36

G

Gamma glutamyltransferase (GGT)	13, 14
Gardnerella detection	43
Gentamicin	13
GI multiplex	38
Giardia	38, 47
Glucose	8, 9, 13, 14
Glucose, body fluid	11
Glucose, spinal fluid	16
Glucose, urine	17, 54, 55
Glucose, whole blood	14, 55
Glycohemoglobin (Hemoglobin A1c)	15
Gram stain	34, 35, 38, 42

H

Haemophilus	35, 36, 40, 41
hCG, serum	13
hCG, urine	54, 55

Helicobacter pylori (total antibody)	28
Helicobacter pylori Antigen, Stool	39
Hematocrit	8, 9, 22, 25
Hematocrit, Waived Methods	9, 25, 55
Hematology	21, 22, 23, 24, 25, 26
Hemoglobin	8, 9, 22, 26
Hemoglobin A1c (Glycohemoglobin)	15
Hemoglobin/Blood, urine	54, 55
Hemoglobin F	25
Hemoglobin, Waived Methods	9, 26, 55
Hepatitis - Anti-HAV, IgM	29
Hepatitis - Anti-HBc (total antibody)	29
Hepatitis - Anti-HBc, IgM	29
Hepatitis - Anti-HBs	29
Hepatitis - Anti-HCV	29
Hepatitis - HBsAg	29
Herpes simplex virus (HSV)	40, 49
HIV (Anti-HIV)	29, 60
HIV-p24 Antigen	29, 60
Homocysteine	15
HPV Genotyping	49
hs-CRP	12
Human herpesvirus 6 (HHV-6)	40
Human metapneumovirus	41, 49
Human papillomavirus (HPV)	49
Human parechovirus (HPeV)	40
Human Rhinovirus/Enterovirus	40, 41, 49

I

IG	22
IgA	30
IgE	30
IGFBP, amniotic fluid	52
IgG	30
IgM	30
Immunohematology	27
Immunology	28-32
Immunoproteins	30
India Ink (encapsulated yeast detection)	46
Infectious mononucleosis	30, 31, 55
Influenza	41, 49, 50, 51
INR	19, 20
Insulin	16
Ionized calcium	8
Ionized magnesium	8
IPF	22
IRF	23
Iron binding capacity (TIBC)	13
Iron, total	13

K

Ketones	10
Ketones, urine	54, 55
Klebsiella	36, 41, 43
KOH (skin & vaginal)	53, 55
KOH Preparation	45

L

Lactate (Lactic acid)	8, 13
Lactate (Lactic acid), spinal fluid	16
Lactate dehydrogenase (LDH)	13
Lactate dehydrogenase (LDH), body fluid	11

INDEX

Lactate dehydrogenase (LDH), spinal fluid 16
Lactobacillus 36
Lactoferrin 52
Lead, blood 11, 60
Legionella 40, 41
Leukocyte count (WBC), blood 22
Leukocyte count (WBC), body fluid 52
Leukocyte esterase 54, 55
Leukocytes, fecal smear 53, 55
Lipase 13
Listeria 36, 40
Lithium 13
Luteinizing hormone (LH) 15
Lyme disease (*Borrelia burgdorferi*) 30

M

Magnesium 13
Magnesium, ionized 8
Magnesium, urine 17
MCV 22
MDMA (Ecstasy) 18
Measles IgG, IgM 30
Meningitis Multiplex 40
Meperidine 18
Methadone 18
Methamphetamines 18
Methaqualone 18
Methemoglobin 9
Methicillin-resistant *Staph aureus* (MRSA) 34, 41
Microalbumin 17
Micrococci 36
Modified acid-fast stain 47
Mold, yeast, and yeast-like organism identification 45, 46
Mononucleosis infectious 30, 31, 55
Moraxella 41
Morganelle 43
MPV 22
Multiplex Panels 36, 38, 40, 41, 43, 49
Mumps IgG, IgM 30
Mycobacteriology, tuberculosis 44
Mycology 45, 46
Mycoplasma 41, 43, 49
Mycoplasma antibody 31
Myoglobin 12

N

Nasal smear for eosinophils 53, 55
Neisseria gonorrhoeae culture 34, 39
Neisseria gonorrhoeae molecular 37
Neisseria meningitidis 35, 36, 40
Nitrites 18, 54, 55
Norovirus 38
NT-proBNP 12
Nucleated red blood cells (NRBC) 22

O

Occult blood (fecal) 53, 55
Occult blood (gastric) 53
Opiates 18
Osmolality 13
Osmolality, urine 17

Oxidants 18
Oxycodone 18
Oxyhemoglobin 9

P

p24 Antigen 29, 60
PAMG-1 protein, amniotic fluid 52
Parainfluenza 41, 49
Parasitology 47, 48
pCO₂ 8
Permanent stain (for parasitology) 47
pH, amniotic fluid 11
pH, blood 8
pH, body fluid 11
pH, urine 18, 54, 55
Phencyclidine (PCP) 18
Phenobarbital 13
Phenytoin (Dilantin) 13
Phosphorus 13, 14
Phosphorus, urine 17
Pinworm preparation 53, 55
Platelet count 22
Plesiomonas 37, 38
Pneumonia Multiplex 41
pO₂ 8
Post-vasectomy 56
Potassium 8, 9, 13, 14
Potassium, spinal fluid 16
Potassium, urine 17
PP12/AFP, amniotic fluid 52
Prealbumin 15
Prevotella 43
Procalcitonin 16
Progesterone 15
Prolactin 15
Propoxyphene 18
Prostate-specific antigen (PSA), free 17
Prostate-specific antigen (PSA), total 15
Protein, body fluid 11
Protein, spinal fluid 16
Protein, total 13, 14
Protein, urine 17, 54, 55
Proteus 36, 41, 43
Protine (PT) 19, 20
Providencia 43
Provider Performed Microscopy 53, 55
Pseudomonas 36, 41, 43
PTH, intact 16

R

Rabies Antigen 49
Rapid Urease 40
RBC (Erythrocyte count), blood 22
RBC (Erythrocyte count), body fluid 52
RDW 22
Re-He 23
Resistance genes 36, 37, 41, 43, 44
Respiratory Multiplex 49
Respiratory syncytial virus (RSV) 41, 49, 50, 51
Reticulocyte count 23
Rh (D) typing 27
Rheumatoid factor 31
Rhinovirus/Enterovirus 40, 41, 49

INDEX

Rhodotorula 36
Rifampin resistance screen (M. tuberculosis) 44
Rotavirus 38, 51
Rubella IgG 31
Rubella IgM 31
Rupture of fetal membranes 11, 52

S

Salicylate 13
Salmonella 36, 37, 38
Sapovirus 38
SARS-CoV-2 32, 49, 50, 51
Serratia 36, 41, 43
Sex Hormone-Binding Globulin 16
Shiga toxin 42
Shigella 37, 38
Sickle cell screen 26
Sodium 8, 9, 13, 14
Sodium, spinal fluid 16
Sodium, urine 17
Specific gravity 18, 54, 55
Sperm count 56
Sperm morphology 56
Sperm motility 56
Sperm progressive motility 56
Staphylococcus 36, 41, 43
Stenotrophomonas 36
Stool wet mount (for parasitology) 47
Strep A antigen detection 34, 38, 42, 55
Strep A culture 34, 39, 42
Strep A molecular 34, 39
Strep B antigen 35
Strep B culture 34, 39
Strep B molecular 34, 39
Streptococcus agalactiae 36, 40, 41, 43
Streptococcus pneumoniae 35, 36, 40, 41
Streptococcus pyogenes 36, 41, 43
Syphilis Nontreponemal 32
Syphilis Treponemal 32

T

T3 Uptake / T-Uptake 13
Testosterone, bioavailable 16
Testosterone, free 16
Testosterone, total 15, 16
Theophylline 13
Therapeutic Drugs 13
Thyroglobulin Antibody 32
Thyroid Antibodies 32
Thyroid Peroxidase/ Microsomal Antibody 32
Thyroid-stimulating hormone (TSH) 13
Thyroxine (T4) 13
TIBC (Iron binding capacity) 13
Tobramycin 13
Tramadol 18
Transferrin 15
Trichomonas detection 37, 43, 48
Tricyclic antidepressants 18
Triglycerides 13, 14
Triglycerides, body fluid 11
Triiodothyronine (T3) 13
Troponin I 12
Troponin T 12

Tumor Markers 17

U

UIBC 13
Unexpected antibody detection 27
Urea nitrogen, blood (BUN) 8, 9, 13, 14
Urea nitrogen, urine 17
Ureaplasma urealyticum 43
Urease 40
Uric acid 13, 14
Uric acid, urine 17
Urinalysis 54, 55
Urine adulteration test 18
Urine culture 34, 42
Urine drug screen 18
Urine hCG 54, 55
Urine sediment 53, 54, 55
Urobilinogen 54, 55
UTI Multiplex 43

V

Vaginal wet preparation 53, 55
Valproic acid 13
Vancomycin 13
Vancomycin-resistant Enterococcus (VRE) 34, 41
Varicella zoster IgG, IgM 30
Varicella zoster virus (VZV) 40
Vibrio 37, 38
Virology 49-51
Vitamin B12 15
25-OH Vitamin D, total 16

W

WBC (Leukocyte count), blood 22
WBC (Leukocyte count), body fluid 52
WBC differential - automated 22
Whole Blood Glucose 14, 55
Wound culture 34

Y

Yeast and yeast-like organism identification 45, 46
Yersinia 37, 38

Z

Zolpidem 18

YOUR LAB OUR MISSION

WSLH Proficiency Testing



With WSLH PT, you receive reliable, affordable, and easy-to-use laboratory proficiency testing products with rapid access to results.

You may request a free no-obligation quote at any time.
We also offer additional services throughout the year, including:

- Calibration verification products
- Evaluation samples
- Remedial testing
- Online training and competency courses

We are your PT provider, backed by a national public health lab and a Big Ten university. Our unique affiliations provide you with the technical expertise and educational resources to set you up for PT success.

In 1966, the Wisconsin State Lab of Hygiene created proficiency testing programs to improve laboratory quality. From these efforts, WSLH PT was established. Today, we serve clinical laboratories like yours throughout the United States, and globally.

WSLH PT is approved by CMS, and accepted by CAP, COLA, & The Joint Commission. To learn more, please visit our site at wslhpt.org.